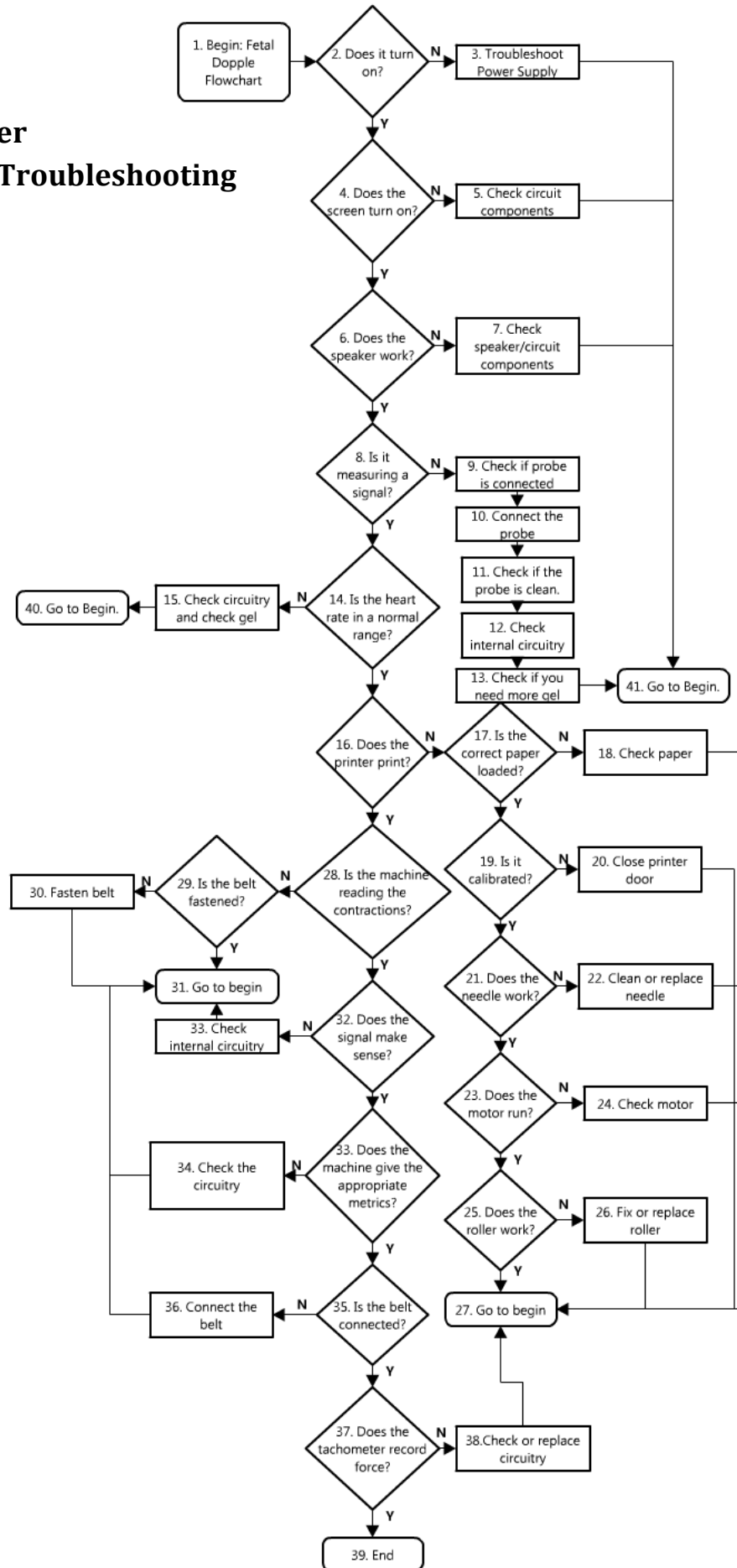


Fetal Doppler Repair and Troubleshooting

Flowchart



Description

	Textbox	Explanation
1	Begin Fetal Doppler Flow Chart	Begin diagnostic process for a work order on Fetal Doppler
2	Does it turn on?	Does it turn on?
3	Trouble shoot Power Supply	See Flowchart on Power Supply, and BTA skills on Power Supply.
4	Does the screen turn on?	Does the screen turn on?
5	Check circuit components	Troubleshoot the electrical components. See BTA skills on Electrical Simple.
6	Does the speaker work?	Is sound audible?
7	Check speaker/ circuit components	Troubleshoot the electrical components. See BTA skills on Electrical Simple.
8	Is it measuring a signal?	Is the monitor/Doppler producing HR sound?
9	Check if probe is connected	Check if the probe is connected to the fetal doppler/monitor.
10	Connect the probe	Connect the probe. See BTA skills on Mechanical – Attachments.
11	Check if probe is clean	Clean the probe. See BTA skills on Cleaning.
12	Check internal circuitry,	Troubleshoot the electrical components. See BTA skills on Electrical Simple.
13	Check if you need more gel	Apply ultrasound gel to the probe.
14	Is the heart rate in a normal range?	Is the heart rate in a normal range?
15	Check circuitry and check gel	Troubleshoot the electrical components and apply ultrasound gel to the probe as necessary. See BTA skills on Electrical Simple.
16	Does the printer print?	Is there a marking on the paper?
17	Is the correct paper in>	Do you have the proper thermal paper?
18	Check paper	Check to see whether paper is full.
19	Is it calibrated?	Is the proper Heart Rate, timing, and contraction output? Is the proper calibration signal upon start?
20	Close printer door	Close door.

21	Does the needle work?	Does the needle work?
22	Clean or replace needle	Clean or replace needle. See BTA skills on Mechanical.
23	Does the motor run?	Does the motor rotate?
24	Check motor	See motor guide and BTA skills on Motors.
25	Does the roller work?	Does the roller move the paper at the correct rate without slipping? Are there cracks or damage to the roller? Is the roller hard and showing signs of age?
26	Fix or replace Roller	Fix or replace Roller.
27	Go to begin.	Go to begin.
28	Is the machine reading the contractions?	Does the machine show numbers for the uterine contractions?
29	Is the belt fastened?	Is the belt fastened?
30	Fasten belt.	Fasten belt.
31	Go to begin.	Go to begin.
32	Does the signal make sense?	Does the uterine contraction signal correlate with the contractions the mother is having?
33	Does the machine give the appropriate metrics?	Does the machine output sensible numbers for contraction force and frequency?
34	Check the circuitry.	Troubleshoot the electrical components. See BTA skills on Electrical Simple.
35	Is the belt connected?	Is the belt connected to the fetal monitor?
36	Connect the belt.	Connect the belt.
37	Does the tachometer record force?	Does the tachometer record force numbers?

38	Replace or check circuitry.	Replace the contraction belt or troubleshoot the circuit (see troubleshooting guide)
39	End	End the flow chart.
40	Go to begin.	Go to begin.
41	Go to begin.	Go to begin.