

SERVICE MANUAL

The Integris™ Monitor Arm From Hill-Rom®



Product No. P997-00

For Parts Or Technical Assistance
USA 1-800-445-3720 Canada 1-800-267-2337

man131ra

Integris Monitor Arm Service Manual

Revisions

Revision Letter	Pages Affected	Date
Original Issue		July, 1996
A	All	June, 1997

man131ra

COPYRIGHT© 1997 HILL-ROM®, INC.

All rights reserved. No part of this text shall be reproduced or transmitted in any form or by any means, electronic or mechanical, including photocopying, recording, or by any information or retrieval system without written permission from HILL-ROM INC. (Hill-Rom).

Second Edition

First Printing 1996

Printed in the USA

Hill-Rom® is a registered trademark of Hill-Rom Company, Inc.

Integris™ is a trademark of Hill-Rom Company, Inc.

The information contained in this manual is subject to change without notice. Hill-Rom makes no commitment to update or keep current, the information contained in this manual.

The only product warranty intended by Hill-Rom is the express, written warranty accompanying the bill of sale to the original purchaser. Hill-Rom makes no other warranty, express or implied, and in particular, makes no warranty of merchantability or fitness for a particular purpose.

Additional copies of this manual can be obtained from Hill-Rom.

Table of Contents

Chapter 1: Introduction

Purpose of this Manual	1 - 3
Who Should Use this Manual	1 - 3
Organization of this Manual	1 - 3
Chapter 1: Introduction	1 - 3
Chapter 2: Troubleshooting Procedures	1 - 3
Chapter 3: Theory of Operation	1 - 3
Chapter 4: Removal, Replacement, and Adjustment Procedures	1 - 3
Chapter 5: Parts List	1 - 4
Chapter 6: General Procedures	1 - 4
Chapter 7: Accessories	1 - 4
Typographical Conventions Used in this Manual.	1 - 5
Introduction to the Integris Monitor Arm	1 - 6
Overview	1 - 6
Options	1 - 6
Operating Precautions	1 - 6
Specifications	1 - 7
Physical Description	1 - 7
UL Classification	1 - 7
Model Identification	1 - 8
Safety Tips	1 - 9
Warning and Caution Labels	1 - 10

Chapter 2: Troubleshooting Procedures

Getting Started	2 - 3
Initial Actions	2 - 3
Function Checks	2 - 4
Final Actions	2 - 4

Monitor Arm Does Not Rotate Freely Left and Right	2 - 5
Monitor Does Not Rotate Freely	2 - 5
Downward Drift	2 - 6
Upward Drift.	2 - 6
Chapter 3: Theory of Operation	
Chapter 4: Removal, Replacement, and Adjustment Procedures	
Pivot Mount Assembly (Track Mount).	4 - 3
Removal	4 - 3
Replacement	4 - 6
Pivot Mount Assembly (Integris Patient Light Mount)	4 - 8
Removal	4 - 8
Replacement	4 - 11
Monitor Pivot Adapter Assembly	4 - 14
Removal	4 - 14
Replacement	4 - 16
Spring	4 - 18
Removal	4 - 18
Replacement	4 - 22
Adjustment	4 - 23
Chapter 5: Parts List	
Warranty	5 - 3
Ordering Service Parts	5 - 5
Exchange Policy	5 - 7
In-Warranty Exchanges	5 - 7
Out-of-Warranty Exchanges.	5 - 7
Recommended Spare Parts	5 - 7
Monitor Arm Assembly	5 - 8
Pivot Mount (Upper or Lower).	5 - 10
Monitor Arm Mount (Track or Integris Patient Light).	5 - 12
Monitor Mount (GCX)	5 - 14
Chapter 6: General Procedures	

Cleaning and Care. 6 - 3

 Steam Cleaning. 6 - 3

 Hard to Clean Spots 6 - 3

 Disinfection. 6 - 3

Lubrication Requirements. 6 - 3

Preventive Maintenance 6 - 4

 Preventive Maintenance Schedule 6 - 5

 Preventive Maintenance Checklist 6 - 6

Tool and Supply Requirements. 6 - 7

Installation Instructions. 6 - 8

 Mounting the Integris Monitor Arm. 6 - 8

 Vertical Track Mount 6 - 8

 Integris Patient Light Mount. 6 - 10

 Monitor Installation 6 - 12

 Spring Tension Adjustment 6 - 14

 Vertical Travel Adjustment 6 - 15

Chapter 7: Accessories

NOTES:

Chapter 1

Introduction

Chapter Contents

Purpose of this Manual	1 - 3
Who Should Use this Manual	1 - 3
Organization of this Manual	1 - 3
Chapter 1: Introduction	1 - 3
Chapter 2: Troubleshooting Procedures	1 - 3
Chapter 3: Theory of Operation	1 - 3
Chapter 4: Removal, Replacement, and Adjustment Procedures	1 - 3
Chapter 5: Parts List	1 - 4
Chapter 6: General Procedures	1 - 4
Chapter 7: Accessories	1 - 4
Typographical Conventions Used in this Manual	1 - 5
Introduction to the Integris Monitor Arm	1 - 6
Overview	1 - 6
Options	1 - 6
Operating Precautions	1 - 6
Specifications	1 - 7
Physical Description	1 - 7
UL Classification	1 - 7
Model Identification	1 - 8
Safety Tips	1 - 9
Warning and Caution Labels	1 - 10

1

Chapter 1: Introduction

NOTES:

Purpose of this Manual

This manual provides the information required for Hill-Rom Integris Monitor Arm normal operation and maintenance. It also includes a parts list for ordering replacement components. The parts list is located in chapter 5.

Who Should Use this Manual

This manual is intended to be used by facility-authorized maintenance personnel only. Failure to observe this restriction can result in serious damage to material and/or severe injury to people.

Organization of this Manual

This manual contains seven chapters.

Chapter 1: Introduction

You are currently reading chapter 1. This chapter defines the manual's purpose and who should use the information in the manual. It also describes the manual's organization and explains the various typographical conventions used throughout the manual. Also included is an introduction, product specifications, model identification, safety tips, and the Integris Monitor Arm caution and warning labels.

Chapter 2: Troubleshooting Procedures

Chapter 2 contains the proper Integris Monitor Arm troubleshooting procedures. It also includes a troubleshooting introduction, initial actions, function checks, final actions, and repair analysis procedures.

Chapter 3: Theory of Operation

There is no theory of operation for the Integris Monitor Arm.

Chapter 4: Removal, Replacement, and Adjustment Procedures

Chapter 4 includes removal, replacement, and adjustment procedures for the Integris Monitor Arm components.

Chapter 5: Parts List

Chapter 5 contains Hill-Rom's warranty, replacement part ordering procedure, exchange policy, illustrated parts lists, and general service information.

Chapter 6: General Procedures

Chapter 6 contains cleaning and care, lubrication requirements, preventive maintenance, Integris Monitor Arm tool and supply requirements.

Chapter 7: Accessories

There are no accessories available for the Integris Monitor Arm.

Typographical Conventions Used in this Manual

This manual contains different typographical conventions designed to enhance readability and understanding of its content. Note the following examples:

- Standard text—used for standard text throughout the manual.
- **Boldface text**—emphasizes a word or phrase.
- **NOTE:**—sets apart special information or important instruction clarification.
- The symbol below highlights a CAUTION or WARNING:

Figure 1-1. Warning and Caution Symbol



- A WARNING identifies situations or actions that may affect patient or user safety. Disregarding a warning could result in patient or user injury.
 - A CAUTION points out special procedures or precautions that personnel must follow to avoid equipment damage.
- The symbol below highlights an electrical shock hazard Warning:

Figure 1-2. Electrical Shock Hazard Warning



Introduction to the Integris Monitor Arm

Overview

The Integris Monitor Arm can be easily positioned in the vertical and horizontal directions. The monitor stand permits the monitor to rotate about a vertical axis independent of the arm's position.

To facilitate the management of power and data cables, the Integris Monitor Arm is equipped with a cable/wire tray.

Options

The monitor arm has four standard configurations, made from the following options:

Wall mount:

- A hinge mount configured for use in a vertical track
- A hinge mount configured for mounting to the Integris Patient Light

Monitor mount:

- Configured for mounting the monitor on the top of the arm
- Configured for mounting the monitor on the bottom of the arm

Operating Precautions



WARNING:

Do not exceed the load capacity of the Integris Monitor Arm. Damage to the equipment or personal injury could occur.



CAUTION:

Ensure the Integris Monitor Arm does not interfere with ceiling mounted equipment or any other equipment located within the operating range of the Integris Monitor Arm.

Specifications

Physical Description

See table 1-1 on page 1-7 for Integris Monitor Arm specifications.

Table 1-1. Specifications

Feature	Dimension
Weight—monitor arm assembly	24 1/2 lb (11.1 kg)
Load support capacity (Safe working load—European)	17-80 lb maximum (6-28 kg)
Width—monitor arm	4 1/4" (107.9 mm)
Length—monitor arm (level position)	26 3/4" (679.4 mm)
Travel—horizontal direction	100° or 220°
Travel—vertical direction	30°
Travel—rotational (monitor stand)	300°

UL Classification

There is no UL classification for the Integris Monitor Arm.

Model Identification**Table 1-2. Model Identification**

Model Number	Description
P997-00	Integriss Monitor Arm

Safety Tips

**WARNING:**

Only facility-authorized maintenance personnel should troubleshoot the Integris Monitor Arm. Troubleshooting by unauthorized personnel could result in personal injury or equipment damage.

**WARNING:**

Make sure that the wall is a reinforced wall capable of handling the load capacity of the monitor arm. Serious personal injury or damage to equipment could occur if the monitor arm was to fall.

**WARNING:**

Put the monitor arm in the up position before removing the monitor. The monitor arm can spring to the up position when the load is removed. Personal injury could occur.

**WARNING:**

Support the weight of the monitor arm with your free hand when you loosen the mount screw. The monitor arm can fall when the mount screw is loosened. Serious personal injury or damage to equipment could occur.

**WARNING:**

Do not attempt to install a monitor arm with a monitor attached. Serious personal injury or damage to equipment could occur.

**WARNING:**

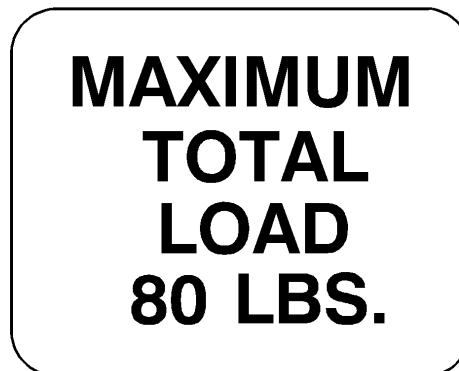
If the channel is not temporarily secured to the spring assembly, the channel will swing down when the pin is removed from the monitor arm. Serious personal injury or damage to equipment could occur.

**WARNING:**

Wear eye protection to avoid eye injury.

**CAUTION:**

Do not use harsh cleaners, solvents, or detergents. Damage to the unit could occur.

Warning and Caution Labels**Figure 1-3. Warning and Caution Labels**

m131_013

Chapter 2

Troubleshooting Procedures

2

Chapter Contents

Getting Started	2 - 3
Initial Actions	2 - 3
Function Checks	2 - 4
Final Actions.....	2 - 4
Monitor Arm Does Not Rotate Freely Left and Right	2 - 5
Monitor Does Not Rotate Freely	2 - 5
Downward Drift	2 - 6
Upward Drift.....	2 - 6

NOTES:

2

Getting Started

Begin each procedure in this chapter with step 1. Follow the sequence outlined (each step assumes the previous steps are correct). Each step is the normal operational event of the product and can be confirmed by answering Y (yes) or N (no) to the statement. Your response will lead to another step in the procedure, a repair analysis procedure (RAP), or a component replacement. If more than one component is listed, replace them in the order given.

Start with **Initial Actions** to begin gathering information about the problem.

Perform the **Function Checks** to isolate/identify a problem and to verify repair after completing each corrective action (replacing or adjusting a part, seating a connector, etc.).

Perform the **Final Actions** after the Function Checks to verify the repair.

If troubleshooting procedures do not isolate the problem, call Hill-Rom Technical Support at (800) 445-3720 for assistance.



WARNING:

Only facility-authorized maintenance personnel should troubleshoot the Integris Monitor Arm. Troubleshooting by unauthorized personnel could result in personal injury or equipment damage.

Initial Actions

Initial Actions are used to gather information from operators concerning problems with the Integris Monitor Arm. Note symptoms or other information concerning the problem that the operator identifies. This information helps identify the probable cause.

1. Someone who can explain the problem is available.

Yes **No**

↓ → Go to “Function Checks” on page 2-4.

2. Ask that person to demonstrate or explain the problem. The problem can be duplicated.

Yes **No**

↓ → Go to “Function Checks” on page 2-4.

3. The problem is a result of improper operator action.
Yes **No**
↓ → Go to “Function Checks” on page 2-4.
4. Instruct the operators on correct usage of the Integris Monitor Arm. Perform the “Function Checks” on page 2-4 to ensure proper operation of the monitor arm.

2

Function Checks

1. Initial Actions have been performed.
Yes **No**
↓ → Go to “Initial Actions” on page 2-3.
2. The monitor arm rotates freely left and right.
Yes **No**
↓ → Go to RAP 2.1.
3. The monitor rotates freely to a maximum of approximately 350°.
Yes **No**
↓ → Go to RAP 2.2.
4. Put the monitor arm in the maximum up position. The monitor arm does not drift downward but remains in the up position.
Yes **No**
↓ → Go to RAP 2.3.
5. Put the monitor arm in the maximum down position. The monitor arm does not drift upward but remains in the down position.
Yes **No**
↓ → Go to RAP 2.4.
6. Go to “Final Actions” on page 2-4.

Final Actions

1. Complete the required preventive maintenance procedures. See “Preventive Maintenance Schedule” on page 6-5.
2. Complete all required administration tasks.

2.1 Monitor Arm Does Not Rotate Freely Left and Right

1. The monitor arm rotates freely left and right.
Yes **No**
↓ → Remove any foreign materials that may be obstructing the movement of the monitor arm. If this solves the problem, go to “Final Actions” on page 2-4. Otherwise, proceed to step 3.
2. Go to “Final Actions” on page 2-4.
3. The monitor arm rotates freely left and right.
Yes **No**
↓ → Replace the pivot mount assembly. See “Pivot Mount Assembly (Track Mount)” on page 4-3 or see “Pivot Mount Assembly (Integris Patient Light Mount)” on page 4-8. If this solves the problem, go to “Final Actions” on page 2-4. Otherwise, proceed to step 5.
4. Go to “Final Actions” on page 2-4.
5. Call Hill-Rom Technical Support at (800) 445-3720.

2.2 Monitor Does Not Rotate Freely

1. The monitor rotates freely to a maximum of approximately 300°.
Yes **No**
↓ → Remove any foreign materials that may be obstructing the movement of the monitor arm. If this solves the problem, go to “Final Actions” on page 2-4. Otherwise, proceed to step 3.
2. Go to “Final Actions” on page 2-4.
3. The monitor rotates freely to a maximum of approximately 300°.
Yes **No**
↓ → Replace the pivot adapter assembly. See “Monitor Pivot Adapter Assembly” on page 4-14. If this solves the problem, go to “Final Actions” on page 2-4. Otherwise, proceed to step 5.
4. Go to “Final Actions” on page 2-4.
5. Call Hill-Rom Technical Support at (800) 445-3720.



2.3 Downward Drift

1. The monitor arm does not drift downward but remains in the up position.
Yes **No**
↓ → Adjust the spring tension. See “Adjustment” on page 4-23. If this solves the problem, go to “Final Actions” on page 2-4. Otherwise, proceed to step 3.
2. Go to “Final Actions” on page 2-4.
3. The monitor arm does not drift downward but remains in the up position.
Yes **No**
↓ → Replace the spring assembly. See “Spring” on page 4-18. If this solves the problem, go to “Final Actions” on page 2-4. Otherwise, proceed to step 4.
4. Go to “Final Actions” on page 2-4.
5. Call Hill-Rom Technical Support at (800) 445-3720.

2.4 Upward Drift

1. The monitor arm does not drift upward but remains in the down position.
Yes **No**
↓ → Adjust the spring tension. See “Adjustment” on page 4-23. If this solves the problem, go to “Final Actions” on page 2-4. Otherwise, proceed to step 3.
2. Go to “Final Actions” on page 2-4.
3. The monitor arm does not drift upward but remains in the down position.
Yes **No**
↓ → Replace the spring assembly. See “Spring” on page 4-18. If this solves the problem, go to “Final Actions” on page 2-4. Otherwise, proceed to step 4.
4. Go to “Final Actions” on page 2-4.
5. Call Hill-Rom Technical Support at (800) 445-3720.

Chapter 3

Theory of Operation

Chapter Contents

There is no Theory of Operation for the Integris Monitor Arm.

3

NOTES:

3

Chapter 4

Removal, Replacement, and Adjustment Procedures

Chapter Contents

Pivot Mount Assembly (Track Mount)	4 - 3
Removal	4 - 3
Replacement	4 - 6
Pivot Mount Assembly (Integris Patient Light Mount)	4 - 8
Removal	4 - 8
Replacement	4 - 11
Monitor Pivot Adapter Assembly	4 - 14
Removal	4 - 14
Replacement	4 - 16
Spring	4 - 18
Removal	4 - 18
Replacement	4 - 22
Adjustment	4 - 23



NOTES:

4

4.1 Pivot Mount Assembly (Track Mount)

Tools required: E-ring tool
Drive ratchet
1/8" allen wrench
3/4" socket
3/16" allen wrench
#2 phillips head screwdriver

Removal

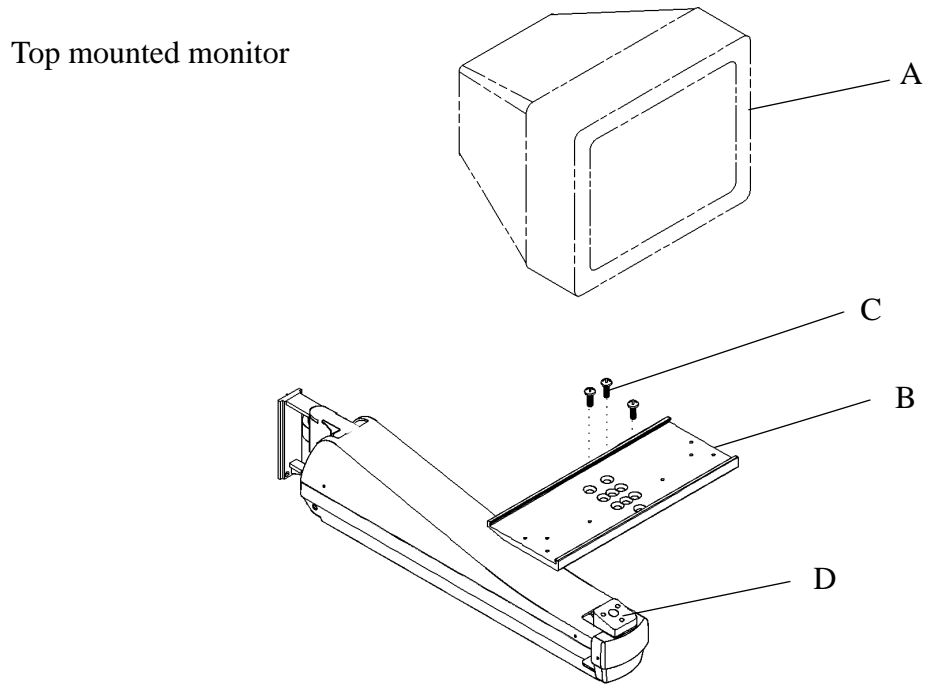


WARNING:

When the weight of the monitor is removed from the monitor arm, the monitor arm could snap to the up position. This could result in personal injury.

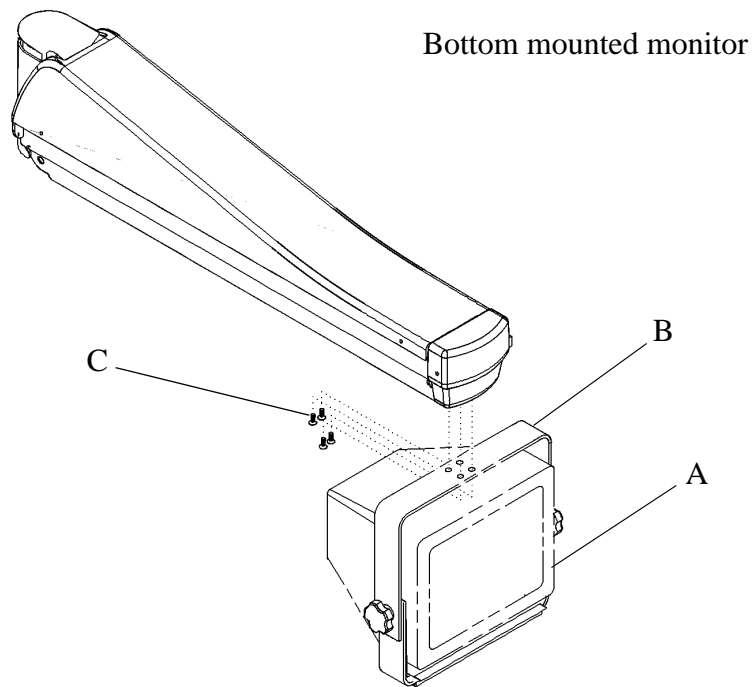
1. Put the monitor arm in the up position.
2. Remove a top mounted monitor as follows:
 - a. Remove the monitor (A) from the monitor mounting plate (B). Refer to the manufacturer's (GCX Corporation) instructions for monitor removal (see figure 4-1 on page 4-4).
 - b. Using a 3/16" allen wrench, remove the three screws (C) and the monitor mounting plate (B) from the monitor pivot plate (D).
3. Remove a bottom mounted monitor as follows:
 - a. Remove the monitor (A) from the monitor mount (B). Refer to the manufacturer's (GCX Corporation) instructions for monitor removal (see figure 4-2 on page 4-4).
 - b. Using a 3/16" allen wrench, remove the four screws (C) and the monitor mount (B) from the monitor pivot plate.
4. Using a 1/8" allen wrench, remove the two screws (B) and the setscrew (G) from the pivot mount assembly (C) (see figure 4-3 on page 4-5).
5. Remove the monitor arm from the track (D). Place the monitor arm (A) on a clean work surface.
6. Using a #2 phillips head screwdriver, remove the four screws (E) and the top cover (F).

Figure 4-1. Monitor Removal (Top Mounted)



m131_007

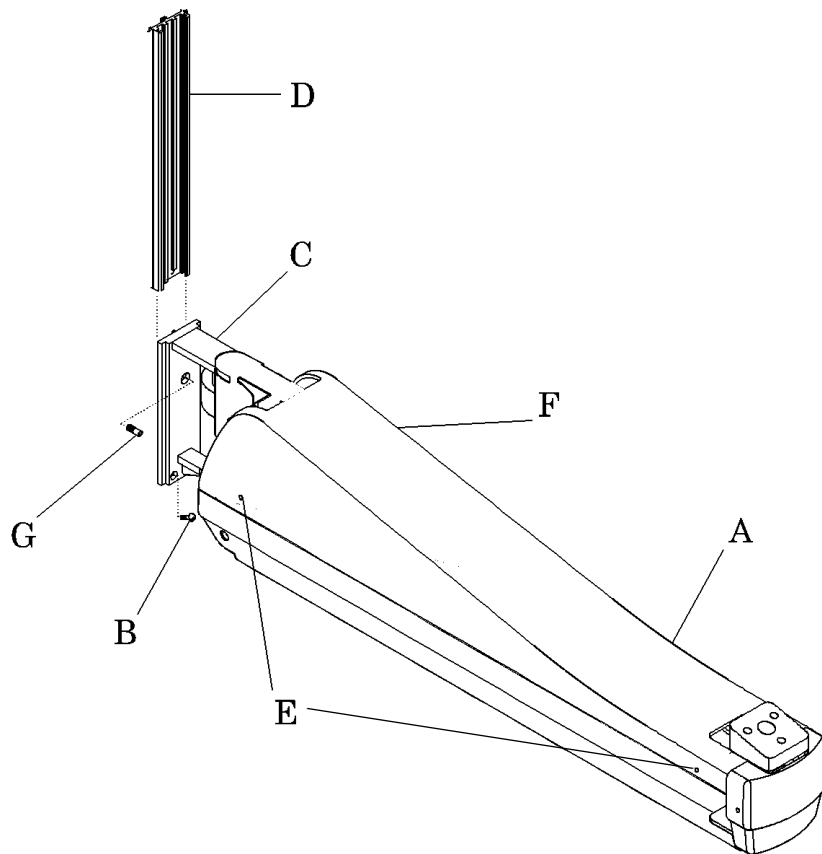
Figure 4-2. Monitor Removal (Bottom Mounted)



m131_008

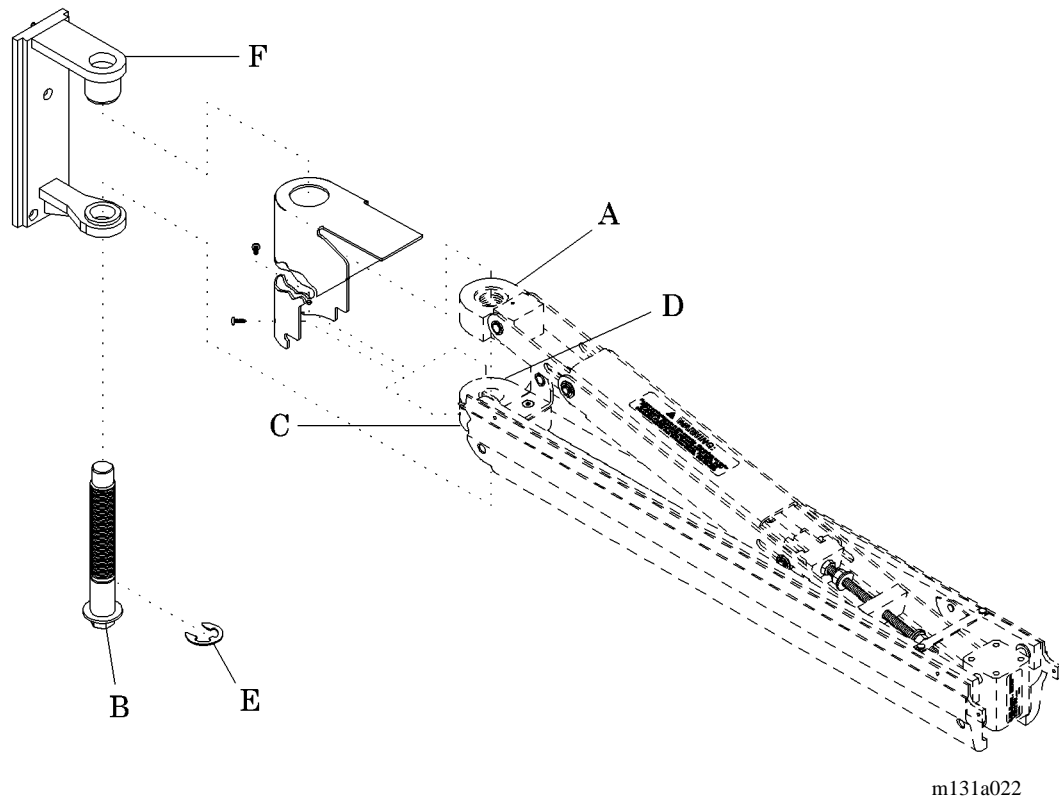
7. Temporarily mark the location of the upper hinge (A) on the load screw (B) (see figure 4-4 on page 4-6).
8. Using a 1/8" allen wrench, loosen the setscrew (C) in the lower hinge (D).
9. Remove the E-ring (E) from the load screw (B).
10. Note the orientation of the pivot mount assembly (F).
11. Using a 3/4" socket and ratchet drive, turn the load screw (B), and remove it from the pivot mount assembly (F) and the upper and lower hinges (A and D).

Figure 4-3. Monitor Arm Removal



m131a005

Figure 4-4. Pivot Mount Assembly Removal



4

Replacement

1. With the new pivot mount assembly (F) in the orientation as noted in the removal procedure, align the new pivot mount assembly with the upper and lower hinges (A and D).
2. Install the load screw (B) through the pivot mount assembly (F) and the upper and lower hinges (A and D).
3. Install the E-ring (E) on the load screw (B).
4. Using a 3/4" socket and ratchet drive, turn the load screw (B) until the upper hinge (A) is in the same position as temporarily marked during the removal procedure.
5. Using a 1/8" allen wrench, tighten the setscrew (C) in the lower hinge (D).
6. Using a #2 phillips head screwdriver, install the top cover (F) and four screws (E) (see figure 4-3 on page 4-5).

**WARNING:**

Do not attempt to install a monitor arm with a monitor attached. Serious personal injury or damage to equipment could occur.

7. Install the monitor arm in the track as follows:
 - a. Orient the pivot mount assembly (C) so that the two screw holes in the pivot mount assembly are located at the bottom of the pivot mount assembly. Slide the pivot mount assembly (C) of the monitor arm in the vertical track (D).
 - b. Lower the monitor arm (A) until the pivot mount assembly (C) rests on the pivot stop block.
 - c. Using a 1/8" allen wrench, install the two allen screws (B) through the pivot mount assembly (C) into the screw holes of the vertical track (D).
 - d. Using a 1/8" allen wrench, install the setscrew (G) through the pivot mount assembly (C). Tighten the setscrew to seat it against the vertical track (D).
8. Install a top mounted monitor as follows:
 - a. Using a 3/16" allen wrench, install the monitor mounting plate (B) with the three screws (C) on the monitor pivot plate (D) (see figure 4-1 on page 4-4).
 - b. Install the monitor (A) on the monitor mounting plate (B). Refer to the manufacturer's (GCX Corporation) instructions for monitor installation.
9. Install a bottom mounted monitor as follows:
 - a. Using a 3/16" allen wrench, install the monitor mount (B) with the four screws (C) on the monitor pivot plate (see figure 4-2 on page 4-4).
 - b. Install the monitor (A) on the monitor mount (B). Refer to the manufacturer's (GCX Corporation) instructions for monitor installation.
10. Move the monitor arm to the maximum down position, and check for drift. Move the monitor arm to the maximum up position, and check for drift. If drift occurs, see "Adjustment" on page 4-23.

4.2 Pivot Mount Assembly (Integrus Patient Light Mount)

Tools required:

- Drive ratchet
- E-ring tool
- Pound foot torque wrench
- 1/2" open end wrench
- 1/8" allen wrench
- 3/4" socket
- 3/16" allen wrench
- 5/16" allen wrench
- #2 phillips head screwdriver

Removal

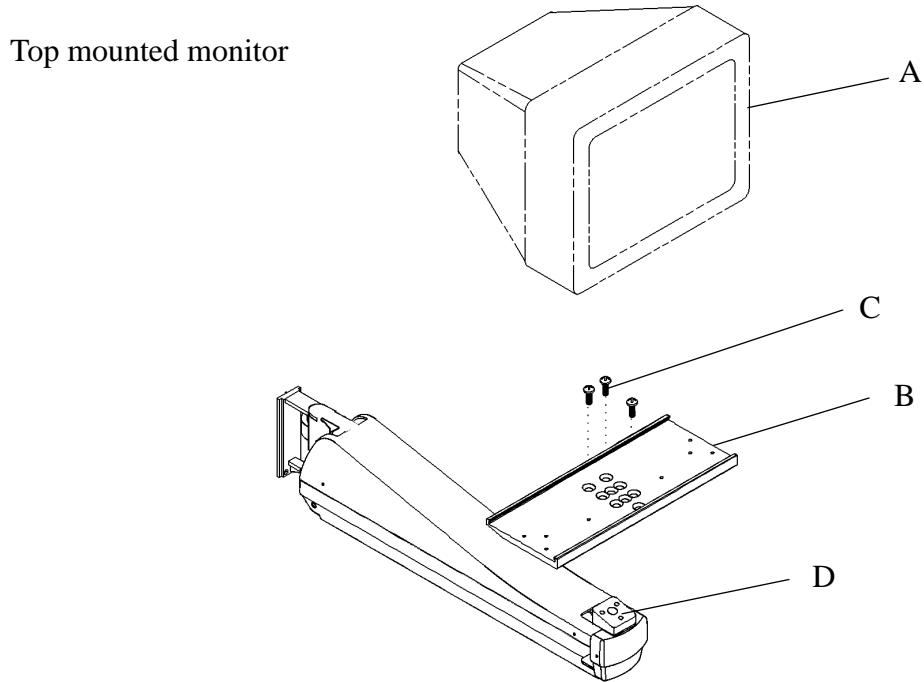


WARNING:

When the weight of the monitor is removed from the monitor arm, the monitor arm could snap to the up position. This could result in personal injury.

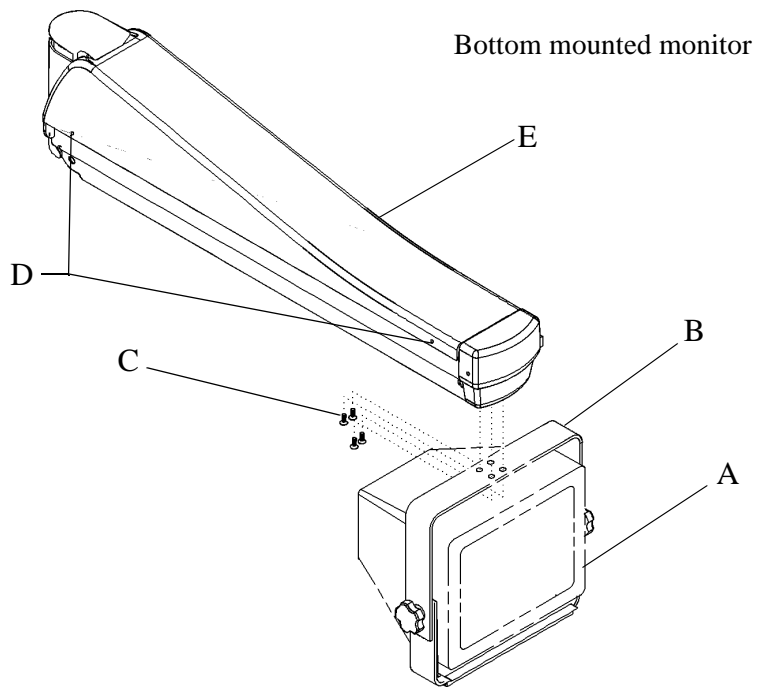
1. Put the monitor arm in the up position.
2. Remove a top mounted monitor as follows:
 - a. Remove the monitor (A) from the monitor mounting plate (B). Refer to the manufacturer's (GCX Corporation) instructions for monitor removal (see figure 4-5 on page 4-9).
 - b. Using a 3/16" allen wrench, remove the three screws (C) and the monitor mounting plate (B) from the monitor pivot plate (D).
3. Remove a bottom mounted monitor as follows:
 - a. Remove the monitor (A) from the monitor mount (B). Refer to the manufacturer's (GCX Corporation) instructions for monitor removal (see figure 4-6 on page 4-9).
 - b. Using a 3/16" allen wrench, remove the four screws (C) and the monitor mount (B) from the monitor pivot plate.

Figure 4-5. Monitor Removal (Top Mounted)



m131_007

Figure 4-6. Monitor Removal (Bottom Mounted)



m131_008

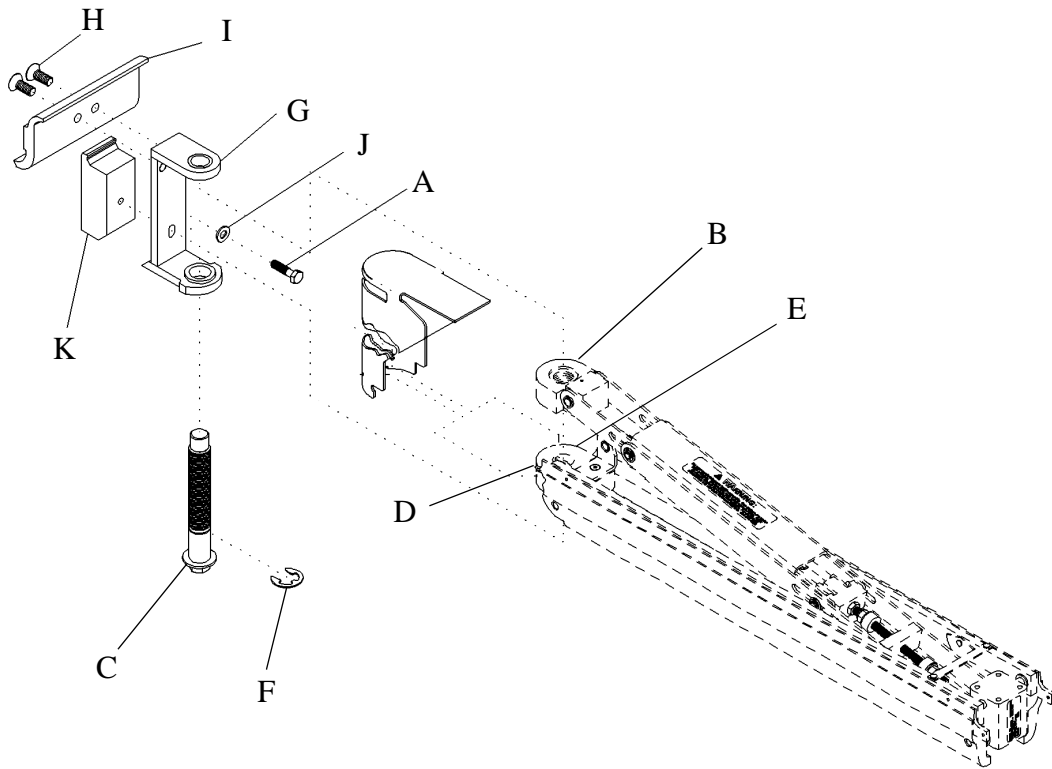


WARNING:

Support the weight of the monitor arm with your free hand when you loosen the mount screw. The monitor arm can fall when the mount screw is loosened. Serious personal injury or damage to equipment could occur.

4. Using a 1/2" open end wrench, loosen the mount screw (A) (see figure 4-7 on page 4-11).
5. Pivot the monitor arm up, and remove it from the Integris Patient Light. Place the monitor arm on a clean work surface.
6. Using a #2 phillips head screwdriver, remove the four screws (D) and the top cover (E) (see figure 4-6 on page 4-9).
7. Temporarily mark the location of the upper hinge (B) on the load screw (C) (see figure 4-7 on page 4-11).
8. Using a 1/8" allen wrench, loosen the setscrew (D) in the lower hinge (E).
9. Remove the E-ring (F) from the load screw (C).
10. Note the orientation of the pivot mount assembly (G).
11. Using a 3/4" socket and ratchet drive, turn the load screw (C), and remove it from the pivot mount assembly (G) and the upper and lower hinges (B and E).
12. Using a 5/16" allen wrench, remove the two screws (H) and the arm mount (I) from the pivot mount assembly (G).
13. Remove the screw (A) and washer (J) from the pivot mount assembly (G) and the clamp block (K).

Figure 4-7. Pivot Mount Assembly Removal



m131_003

4

Replacement

1. Loosely install the washer (J) and screw (A) in the pivot mount assembly (G) and the clamp block (K).
2. Using a torque wrench, install the arm mount (I) to the pivot mount assembly (G) with two screws (H). Torque the screws to 20-30 lb-ft (28-40 N•m).
3. With the new pivot mount assembly (G) in the orientation as noted in the removal procedure, align the new pivot mount assembly with the upper and lower hinges (B and E).
4. Install the load screw (C) through the pivot mount assembly (G) and the upper and lower hinges (B and E).
5. Install the E-ring (F) on the load screw (C).

6. Using a 3/4" socket and ratchet drive, turn the load screw (C) until the upper hinge (B) is in the same position as temporarily marked during the removal procedure.
7. Using a 1/8" allen wrench, tighten the setscrew (D) in the lower hinge (E).
8. Using a #2 phillips head screwdriver, install the top cover (C) and four screws (B) (see figure 4-6 on page 4-9).



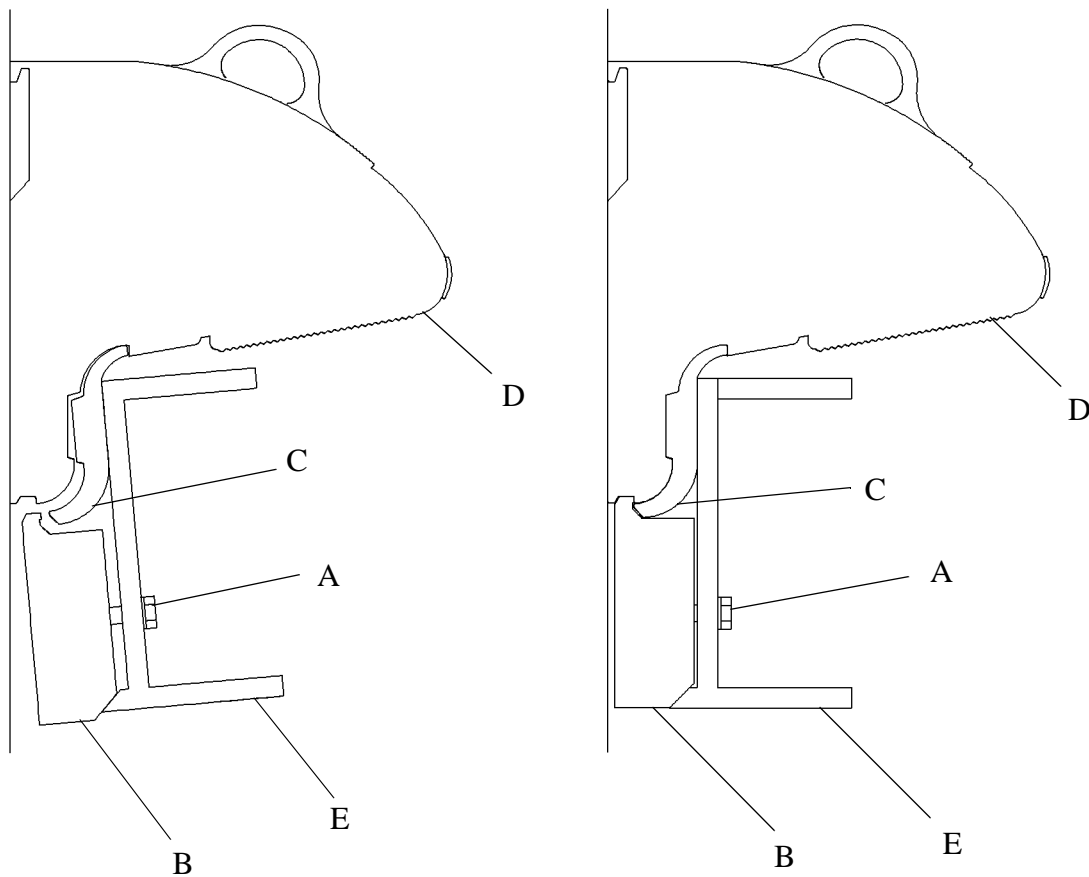
WARNING:

Do not attempt to install a monitor arm with a monitor attached. Serious personal injury or damage to the equipment could occur.

9. Install the monitor arm to the Integris Patient Light as follows:
 - a. Make sure the screw (A) is loose enough to allow the top lip of the clamp block (B) to be flush or below the edge of the arm mount (C) (see figure 4-8 on page 4-13).
 - b. Position the monitor arm under the Integris Patient Light housing (D).
 - c. Holding the monitor end of the monitor arm up, engage the curved lip on top of the arm mount (C) with the recess in the underside of the Integris Patient Light housing (D).
 - d. Lower the monitor end of the monitor arm to allow the clamp block (B) to contact the wall. Do not allow the arm mount (C) to disengage from the recess in the Integris Patient Light housing (D).
 - e. Holding the clamp block (B) against the wall and using a torque wrench, torque the cap screw (A) to 195-215 in-lb (22.1-24.2 N•m). As you torque the cap screw, make sure the clamp block engages with the slot in the bottom of the light housing (D).
10. Install a top mounted monitor as follows:
 - a. Using a 3/16" allen wrench, install the monitor mounting plate (B) with the three screws (C) on the monitor pivot plate (D) (see figure 4-5 on page 4-9).
 - b. Install the monitor (A) on the monitor mounting plate (B). Refer to the manufacturer's (GCX Corporation) instructions for monitor installation.
11. Install a bottom mounted monitor as follows:
 - a. Using a 3/16" allen wrench, install the monitor mount (B) with the four screws (C) on the monitor pivot plate (see figure 4-6 on page 4-9).

- b. Install the monitor (A) on the monitor mount (B). Refer to the manufacturer's (GCX Corporation) instructions for monitor installation.
12. Move the monitor arm to the maximum down position, and check for drift. Move the monitor arm to the maximum up position, and check for drift. If drift occurs, see "Adjustment" on page 4-23.

Figure 4-8. Integris Patient Light Mount



m131_011



4.3 Monitor Pivot Adapter Assembly

Tools required: 3/16" allen wrench
5/16" allen wrench
#2 phillips head screwdriver

Removal

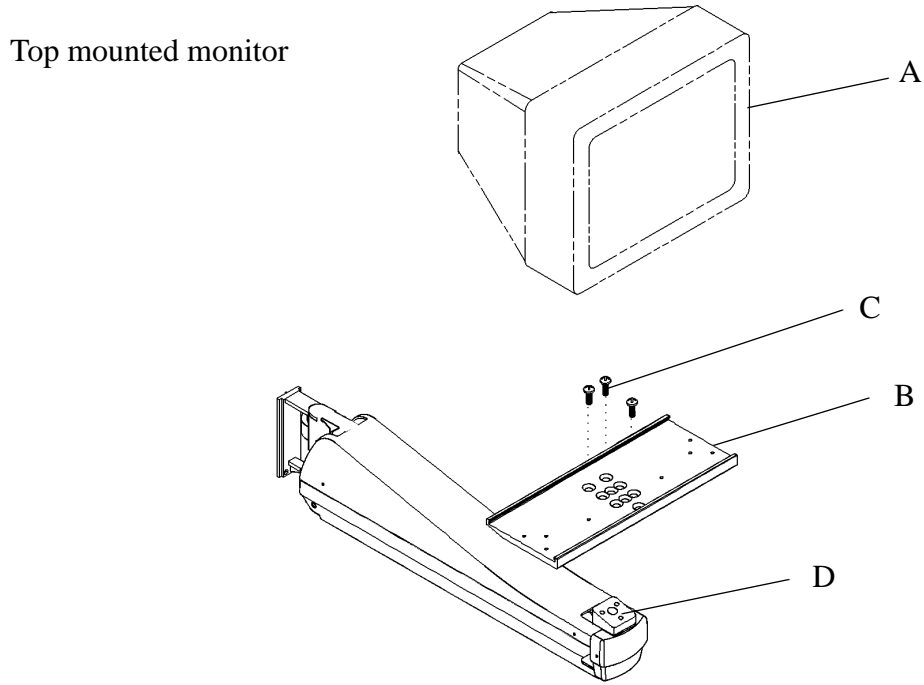


WARNING:

When the weight of the monitor is removed from the monitor arm, the monitor arm could snap to the up position. This could result in personal injury.

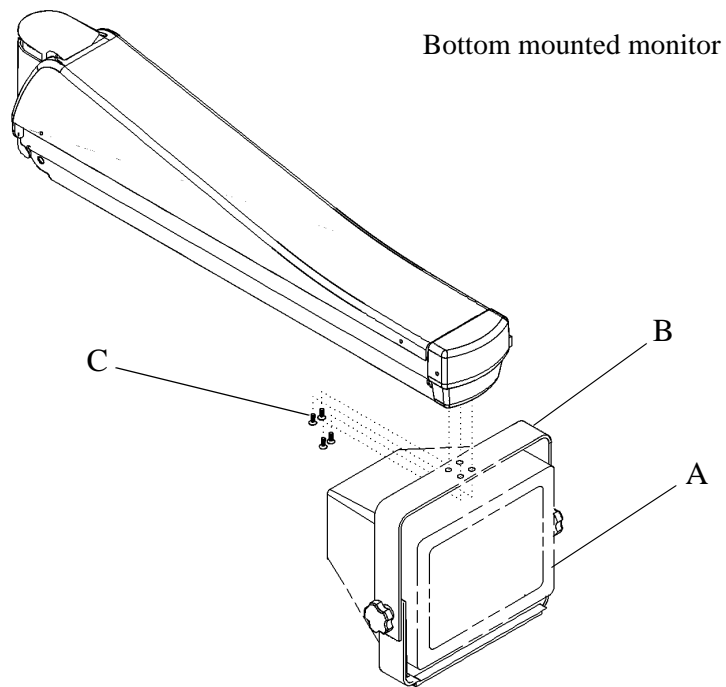
1. Put the monitor arm in the up position.
2. Remove a top mounted monitor as follows:
 - a. Remove the monitor (A) from the monitor mounting plate (B). Refer to the manufacturer's (GCX Corporation) instructions for monitor removal (see figure 4-9 on page 4-15).
 - b. Using a 3/16" allen wrench, remove the three screws (C) and the monitor mounting plate (B) from the monitor pivot plate (D).
3. Remove a bottom mounted monitor as follows:
 - a. Remove the monitor (A) from the monitor mount (B). Refer to the manufacturer's (GCX Corporation) instructions for monitor removal (see figure 4-10 on page 4-15).
 - b. Using a 3/16" allen wrench, remove the four screws (C) and the monitor mount (B) from the monitor pivot plate.
4. Using a 5/16" allen wrench, remove the screw (B) from the monitor pivot plate (A) (see figure 4-11 on page 4-16).
5. Remove the monitor pivot plate (A) and the nylon washer (C).
6. Using a 3/16" allen wrench, remove the four screws (D) and the old monitor pivot adapter (E).
7. Using a #2 phillips head screwdriver, remove the two screws (G) and the dust cover (H).

Figure 4-9. Monitor Removal (Top Mounted)

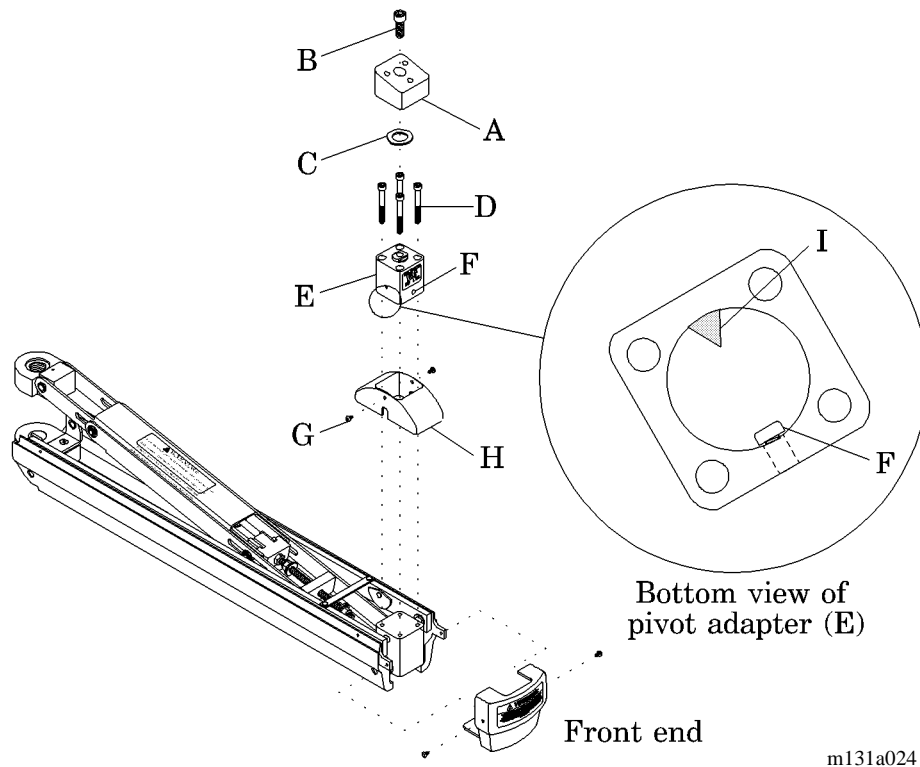


m131_007

Figure 4-10. Monitor Removal (Bottom Mounted)



m131_008

Figure 4-11. Pivot Adapter Assembly Replacement

m131a024

4

Replacement

1. Using a #2 phillips head screwdriver, install the dust cover (H) to the pivot adapter (E) with two screws (G) (see figure 4-11 on page 4-16).
2. Install the new monitor pivot adapter (E) as follows:

NOTE:

These steps must be followed to ensure that the monitor will pivot correctly.

- a. Make sure the stop (I) on the bottom of the pivot shaft is positioned opposite (180°) the stop screw (F).
- b. Position the monitor pivot adapter (E) on the monitor arm so that the stop screw (F) is located nearest the front of the monitor arm.
- c. Using a 3/16" allen wrench, install the four screws (D).

3. Install the nylon washer (C) and the monitor pivot plate (A) on the pivot adapter (E). Do not install screw (B) at this time. The slot on the bottom of the monitor pivot plate must engage the flats on the pivot shaft of the pivot adapter.
4. Using a 5/16" allen wrench, install the screw (B) through the monitor pivot plate (A). Torque to 20-30 ft-lb (28-40 N•m).
5. Install a top mounted monitor as follows:
 - a. Using a 3/16" allen wrench, install the monitor mounting plate (B) with the three screws (C) on the monitor pivot plate (D) (see figure 4-9 on page 4-15).
 - b. Install the monitor (A) on the monitor mounting plate (B). Refer to the manufacturer's (GCX Corporation) instructions for monitor installation.
6. Install a bottom mounted monitor as follows:
 - a. Using a 3/16" allen wrench, install the monitor mount (B) with the four screws (C) on the monitor pivot plate (see figure 4-10 on page 4-15).
 - b. Install the monitor (A) on the monitor mount (B). Refer to the manufacturer's (GCX Corporation) instructions for monitor installation.

4.4 Spring

Tools required: Drive ratchet
Nylon strap
Punch
Small hammer
3/4" socket
#2 phillips head screwdriver

Removal

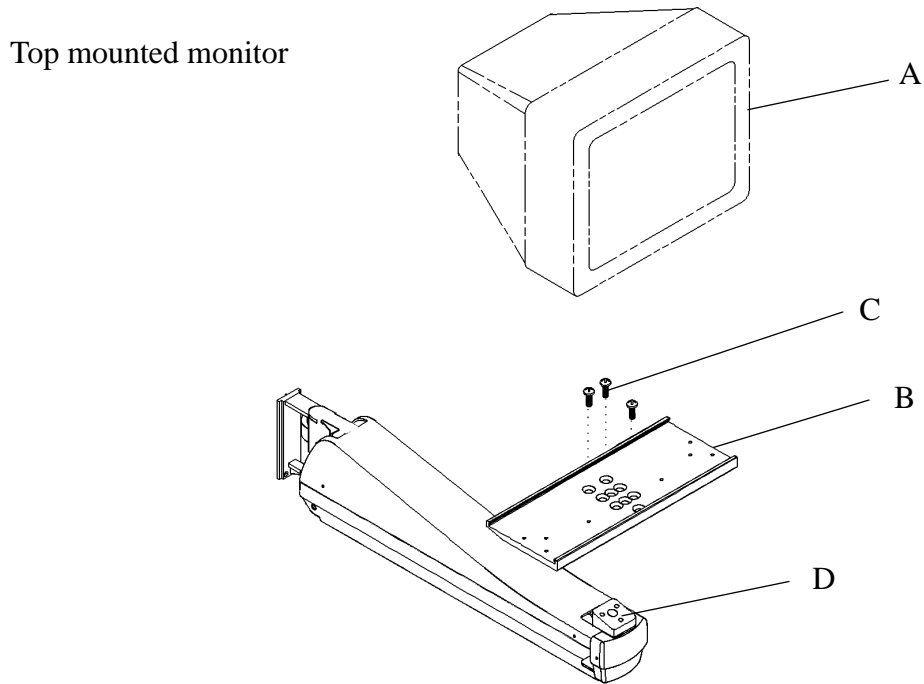


WARNING:

When the weight of the monitor is removed from the monitor arm, the monitor arm could snap to the up position. This could result in personal injury.

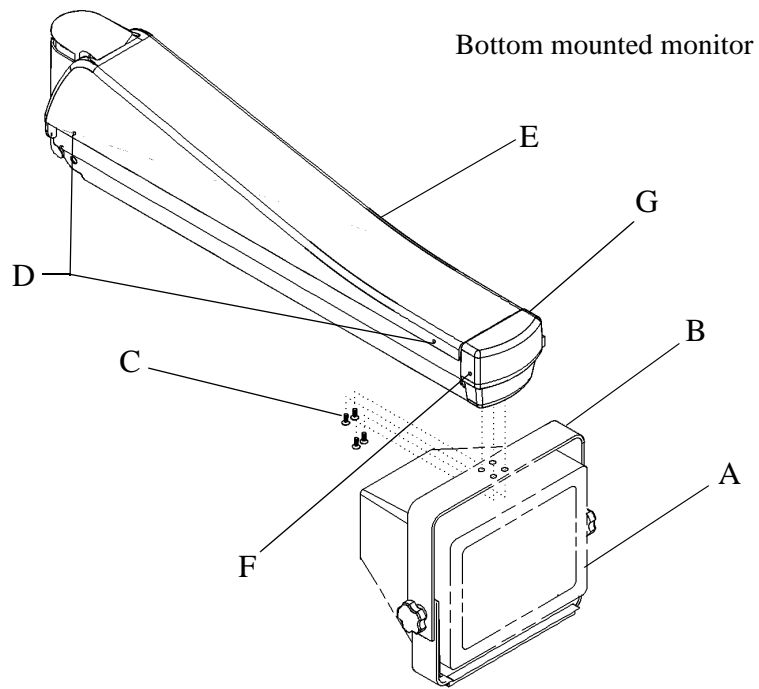
1. Put the monitor arm in the up position.
2. Remove a top mounted monitor as follows:
 - a. Remove the monitor (A) from the monitor mounting plate (B). Refer to the manufacturer's (GCX Corporation) instructions for monitor removal (see figure 4-12 on page 4-19).
 - b. Using a 3/16" allen wrench, remove the three screws (C) and the monitor mounting plate (B) from the monitor pivot plate (D).
3. Remove a bottom mounted monitor as follows:
 - a. Remove the monitor (A) from the monitor mount (B). Refer to the manufacturer's (GCX Corporation) instructions for monitor removal (see figure 4-13 on page 4-19).
 - b. Using a 3/16" allen wrench, remove the four screws (C) and the monitor mount (B) from the monitor pivot plate.
4. Using a #2 phillips head screwdriver, remove the two screws (F) and the end cap (G).
5. Using a #2 phillips head screwdriver, remove the four screws (D) and the top cover (E).
6. Using a 1/8" allen wrench, loosen the setscrew (G) in the lower hinge (H) (see figure 4-14 on page 4-20).

Figure 4-12. Monitor Removal (Top Mounted)



m131_007

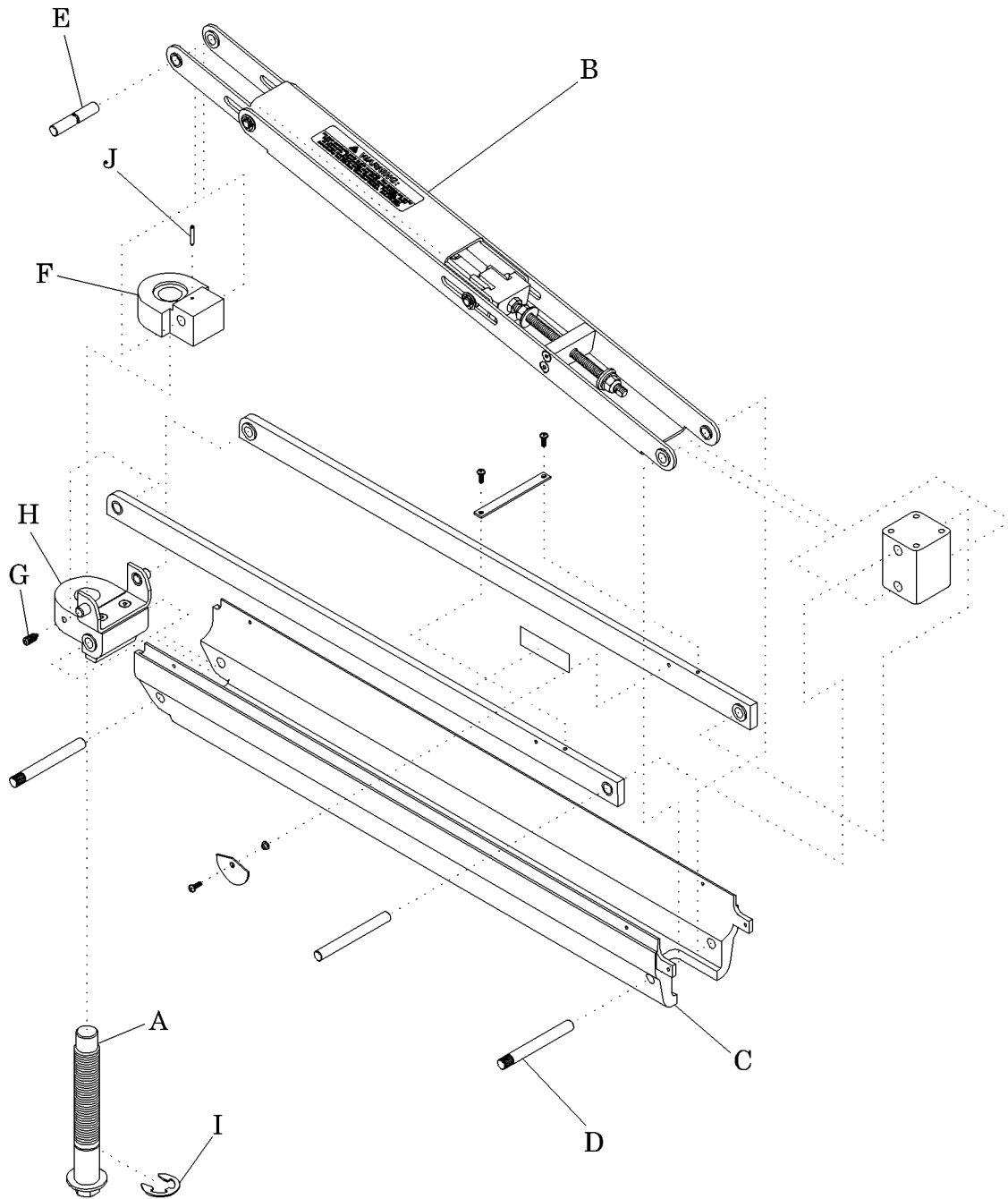
Figure 4-13. Monitor Removal (Bottom Mounted)



m131_008



Figure 4-14. Spring Assembly Replacement



4

m131a023

7. Temporarily mark the location of the upper hinge on the load screw.
8. Looking up from underneath the monitor arm and using a 3/4" socket and drive ratchet, turn the load screw (A) counterclockwise. This will raise the rear of the spring assembly (B) to the top of the load screw.
9. Using a nylon strap or equivalent, temporarily secure the channel (C) to the spring assembly (B).

**WARNING:**

If the channel is not temporarily secured to the spring assembly, the channel will swing down when the pin is removed from the monitor arm. Serious personal injury or damage to equipment could occur.

**WARNING:**

Wear eye protection to avoid eye injury.

10. Using a punch and small hammer, drive the pin (D) from the monitor arm.
11. Holding the channel (C), remove the nylon strap. Lower the channel.
12. Remove the E-ring (I) and load screw (A).
13. Remove the spring assembly (B) and place on a work surface.

**WARNING:**

Wear eye protection to avoid eye injury.

14. Using a punch and small hammer, drive the pin (J) from the upper hinge.
15. Using a punch and small hammer, drive the pin (E) from the monitor arm.

Replacement

**WARNING:**

Wear eye protection to avoid eye injury.

1. Align the pin holes in the new spring assembly (B) with the holes in the upper hinge (F). Install the pin (E) through the spring assembly and the upper hinge. Using a punch and small hammer, tap the pin into place.
 - Make sure the surface of the spring assembly with the warning label is in the up position.
 - Make sure the threaded rod of the spring assembly is positioned at the monitor end of the arm.
2. Install the pin (J) through the upper hinge. Use a small hammer to tap the pin into place.
3. Holding the spring assembly in position, install the load screw (A) through the lower hinge (H) and the upper hinge (F). Install the E-ring (I).

**WARNING:**

Wear eye protection to avoid eye injury.

4. Align the holes at the monitor end of the channel (C) with the pin holes in the spring assembly (B). Install the pin (D) through the channel and the spring assembly. Using a punch and small hammer, tap the pin into place.
5. Using a 3/4" socket and ratchet drive, turn the load screw (A) until the upper hinge (F) is in the same position as temporarily marked during the removal procedure.
6. Using a 1/8" allen wrench, tighten the setscrew (G) in the lower hinge (H).
7. Using a #2 phillips head screwdriver, install the top cover (E) with four screws (D) (see figure 4-13 on page 4-19).
8. Using a #2 phillips head screwdriver, install the end cap (G) with two screws (F).
9. Install a top mounted monitor as follows:
 - a. Using a 3/16" allen wrench, install the monitor mounting plate (B) with the three screws (C) on the monitor pivot plate (D) (see figure 4-12 on page 4-19).

- b. Install the monitor (A) on the monitor mounting plate (B). Refer to the manufacturer's (GCX Corporation) instructions for monitor installation.
10. Install a bottom mounted monitor as follows:
 - a. Using a 3/16" allen wrench, install the monitor mount (B) with the four screws (C) on the monitor pivot plate (see figure 4-13 on page 4-19).
 - b. Install the monitor (A) on the monitor mount (B). Refer to the manufacturer's (GCX Corporation) instructions for monitor installation.
 11. Move the monitor arm to the maximum down position, and check for drift. Move the monitor arm to the maximum up position, and check for drift. If drift occurs, see "Adjustment" on page 4-23.

Adjustment

1. If the monitor arm drifts upward, adjust the spring tension as follows (see figure 4-14 on page 4-20):
 - a. Using a 1/8" allen wrench, loosen the setscrew (G) in the lower hinge (H).
 - b. Looking up from underneath the monitor arm and using a 3/4" socket with a drive ratchet, turn the load screw (A) clockwise to reduce the spring tension and eliminate the upward drift.
 - c. Using a 1/8" allen wrench, tighten the setscrew (G) in the lower hinge (H).
2. If the monitor arm drifts downward, adjust the spring tension as follows:
 - a. Using a 1/8" allen wrench, loosen the setscrew (G) in the lower hinge (H).
 - b. Looking up from underneath the monitor arm and using a 3/4" socket with a drive ratchet, turn the load screw (A) counterclockwise to increase the spring tension, and eliminate the downward drift.
 - c. Using a 1/8" allen wrench, tighten the setscrew (G) in the lower hinge (H).
3. Move the monitor arm to the maximum down position, and check for drift. Move the monitor arm to the maximum up position, and check for drift. If drift occurs, repeat the adjustment procedure.

NOTES:

Chapter 5

Parts List

Chapter Contents

Warranty	5 - 3
Ordering Service Parts	5 - 5
Exchange Policy	5 - 7
In-Warranty Exchanges	5 - 7
Out-of-Warranty Exchanges.....	5 - 7
Recommended Spare Parts	5 - 7
Monitor Arm Assembly	5 - 8
Pivot Mount (Upper or Lower).....	5 - 10
Monitor Arm Mount (Track or Integris Patient Light).....	5 - 12
Monitor Mount (GCX)	5 - 14

NOTES:

Warranty

HILL-ROM® COMPANY, INC. LIMITED WARRANTY

Hill-Rom Company, Inc. (Hill-Rom) has a long tradition of providing superior products and service to our customer. Our goal is "Total Customer Satisfaction". In that spirit, Hill-Rom is proud to offer the following warranty.

GENERAL WARRANTY (APPLICABLE UNLESS A SPECIFIC WARRANTY IS LISTED)

Hill-Rom warrants to the original purchaser that its products and replacement parts shall be free from defects in material and workmanship for a period of one (1) year from date of delivery. Hill-Rom's obligation under this warranty is expressly limited to supplying replacement parts and/or service for, or replacing, at its option, any product which is, in the sole discretion of Hill-Rom, found to be defective. In addition to the foregoing one year warranty, Hill-Rom warrants to the original purchaser that the frame and welds on its products will be free from structural defects for the life of the product. Any product upgrade or modification initiated by Hill-Rom does not affect the original product warranty.

SPECIFIC WARRANTIES

MATTRESS WARRANTIES

Hill-Rom warrants to the original purchaser that its mattress product shall be free from defects in material and workmanship for a period of two (2) years from date of delivery. However, electro mechanical mattress components (compressors, valves, printed circuit boards, hoses, and couplers) are covered by the general one (1) year warranty.

EXPENDABLES WARRANTIES

A sixty (60) day limited warranty from date of delivery applies to expendable parts such as cushions, coverlets, software diskettes, locator badge batteries, dome light incandescent bulbs, overhead fluorescent tubes, heating elements, temperature probes, filter sheets, and microspheres. This warranty is limited to replacement of the parts covered.

TO OBTAIN PARTS AND SERVICE

In the United States, call Hill-Rom Technical Support Department at (800) 445-3720, Monday through Friday. In Canada, call Hill-Rom Technical Support Department at (800) 267-2337, Monday through Friday. Outside the United States and Canada, call your authorized Hill-Rom Distributor. In order to expedite service, we request you furnish the following information: customer identification number, product model number, serial number, and description of problem. A qualified specialist will provide, via telephone (United States and Canada), or FAX (Outside the United States and Canada), troubleshooting assistance for facility personnel and provide necessary parts to make repairs. If troubleshooting determines the need for on-site technical service, a qualified service representative will be dispatched. Replacement of non-technical items will be the responsibility of the customer. If requested by Hill-Rom, products or parts for which a warranty claim is made shall be returned prepaid to Hill-Rom's factory.

OUT OF WARRANTY EXCHANGE POLICY

After the expiration of the original warranty, upon request, Hill-Rom will ship as a replacement, components such as selected: motors and printed circuit boards, for like units returned to Hill-Rom by the original purchaser at a substantial savings. Please call Hill-Rom Technical Support Department for current pricing.

PARTS AVAILABILITY POLICY

Hill-Rom will offer parts for new and remanufactured products for ten (10) years from date of sale; for communications products for five (5) years from date of sale.

Note: Some original component parts and assemblies may not be available; functional equivalents may be substituted.

THE FOREGOING WARRANTIES ARE EXCLUSIVE AND IN LIEU OF ALL OTHER EXPRESS WARRANTIES AND IMPLIED WARRANTIES, INCLUDING BUT NOT LIMITED TO, THE IMPLIED WARRANTIES OF MERCHANTABILITY AND FITNESS OF PURPOSE. HILL-ROM'S OBLIGATION UNDER THESE WARRANTIES SHALL NOT INCLUDE ANY LIABILITY FOR LOSS OF PROFITS, DIRECT, INDIRECT OR CONSEQUENTIAL DAMAGES OR DELAYS.

Some states, provinces, or countries do not allow the exclusion or limitation of incidental or consequential damages, so the above exclusion or limitation may not apply. Any improper or negligent use, any alterations or repairs not in accordance with Hill-Rom's manuals or performed by others in such manner as in Hill-Rom's sole judgment affects the product materially and adversely, shall void these warranties. These warranties do not cover failures due to misuse, abuse, neglect, or lack of routine maintenance. No employee or representative of Hill-Rom is authorized to change these warranties in any way or grant any other warranty unless in writing and signed by a Hill-Rom officer. These warranties provide specific legal rights; but, there may be other available rights, which vary from state to state, province to province, or country to country.

Revised April 17, 1997

NOTES:

Ordering Service Parts

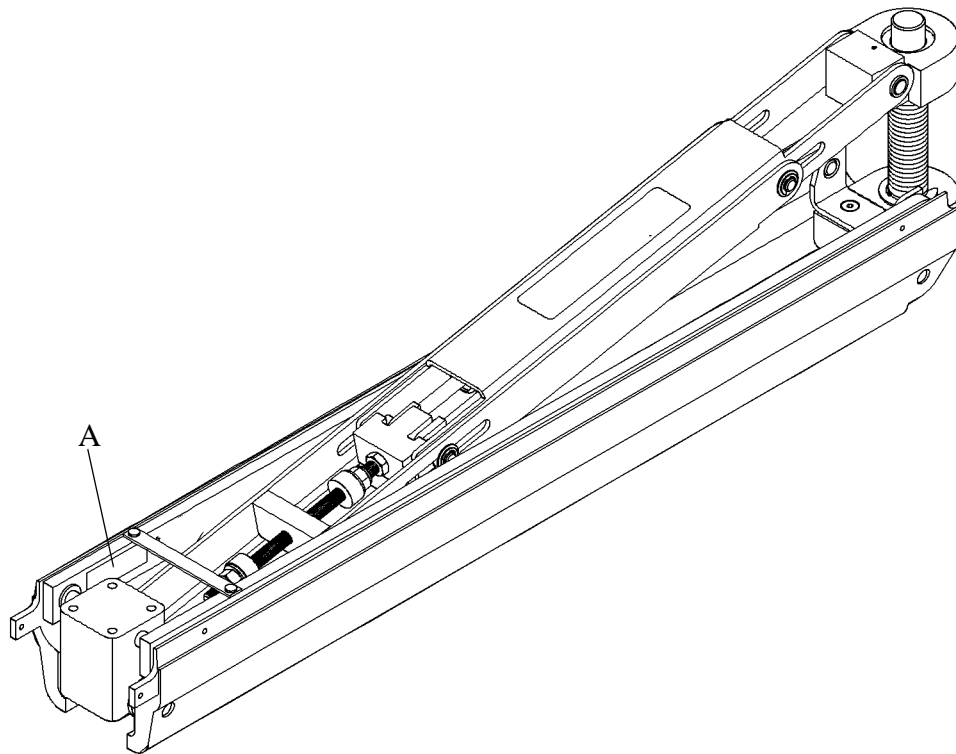
Use the parts lists in this service manual to identify the part numbers you require.

Call your Technical Customer Support Specialist at the Hill-Rom Technical Support Department—phone (800) 445-3720. To help expedite the processing of your parts order, please have your six-digit customer account number, purchase order number, product number, and serial number available for the Technical Customer Support Specialist when you call.

NOTE:

You will find the product number and serial number on the product identification label (A) (see figure 5-1 on page 5-5).

Figure 5-1. Location of Identification Label



m131_021

For your convenience, Hill-Rom provides a telefax number to promptly order parts, request part prices and availability, or to follow up on a service order. The telefax number is (812) 934-8472.

We suggest a minimum of \$40.00 when placing orders for service parts. This will help prevent an increase in the cost of processing your service order.

Terms:

- Net 30 days.
- F.O.B. Batesville, Indiana.
- Shipping charges are prepaid and added to the invoice.
- All service orders are shipped UPS ground, unless you specifically request an alternative method.

Address all inquiries to:

Hill-Rom Inc.
1069 State Route 46 E
Batesville, Indiana 47006-9167
Attention: Technical Support—Parts

Address all return goods to:

Hill-Rom Inc.
Distribution Center Door D23
County Road 300E
Batesville, Indiana 47006-9167
Attention: Service Stores

5

NOTE:

To eliminate possible delays or incorrect billings, **do not** return any items without a Return Material Authorization (RMA) number. A Return Material Authorization packet is included with each order when a return is requested. This packet includes an RMA number, instructions, and a shipping label. If misplaced, obtain an RMA number by phoning the Hill-Rom Technical Support Department at (800) 445-3720.

Exchange Policy

The following are Hill-Rom's policies for in-warranty and out-of-warranty exchanges.

In-Warranty Exchanges

Hill-Rom will request that parts/products be returned for inspection in some cases. When this occurs, you are expected to return parts/products within 30 days. If you fail to return the inoperative parts/products within the 30 day period, Hill-Rom will invoice your facility for the full selling price of the parts/products.

NOTE:

The preceding billing procedure **only** pertains to parts/products that Hill-Rom requests to be returned.

In some cases, the invoice sent with the parts will show the full selling price of the parts. This is for Hill-Rom's internal use only and should not be confused with the price you will actually pay.

Please do not return any parts without an RMA number. Hill-Rom will include a Return Material Authorization packet with the parts/products shipment when parts/products have been requested to be returned. If misplaced, obtain an RMA number by phoning the Hill-Rom Technical Support Department at (800) 445-3720.

Out-of-Warranty Exchanges

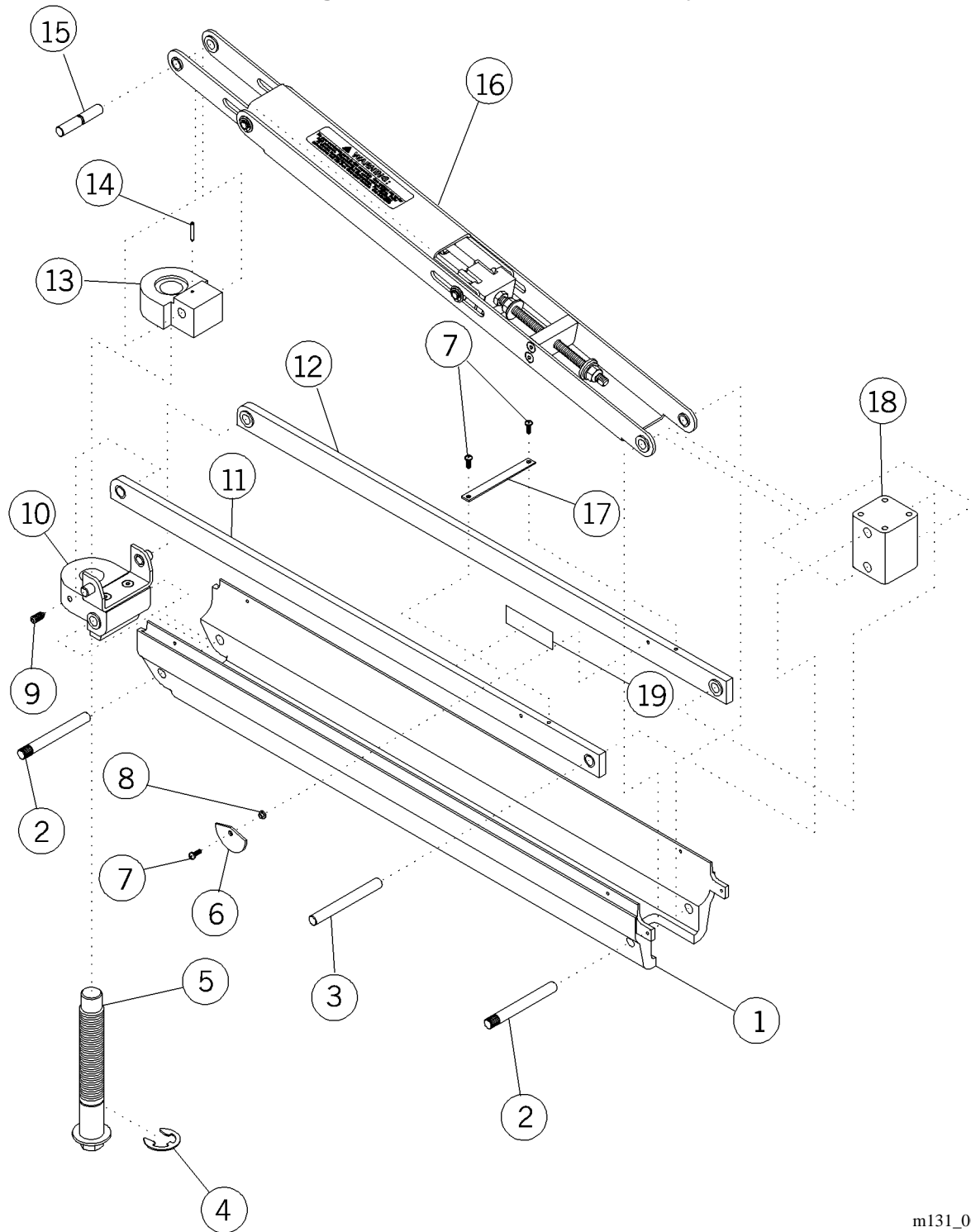
You are expected to return the inoperative parts/product to Hill-Rom within 30 days. Hill-Rom will include a Return Material Authorization packet with the parts/products shipment. If misplaced, obtain an RMA number by phoning the Hill-Rom Technical Support Department at (800) 445-3720. If you fail to return the equipment within thirty days, Hill-Rom will invoice your facility for **the difference between the exchange price and the new price of the part.**

Recommended Spare Parts

There are no recommended spare parts for the Integris Monitor Arm.

Monitor Arm Assembly

Figure 5-2. Monitor Arm Assembly



5

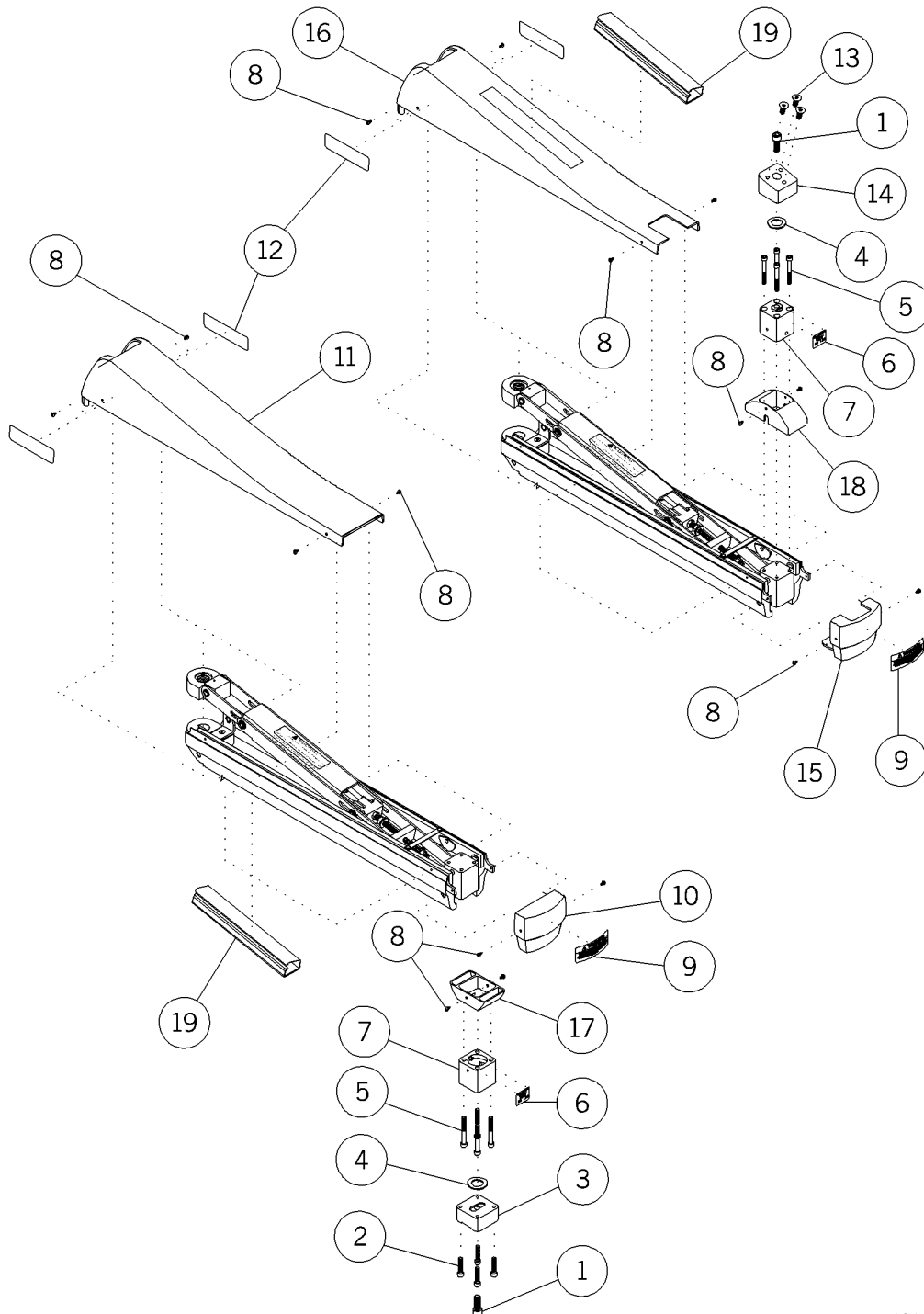
m131_001

Table 5-1. Monitor Arm Assembly

Item Number	Part Number	Quantity	Description
1	5811948 (997)	1	Channel, powder coated
2	58305 (997)	2	Pin, knurled
3	58306 (997)	1	Pin
4	58323 (997)	1	External retaining ring
5	58331 (997)	1	Load screw weldment
6	5861039 (997)	1	Level gauge
7	50891-04 (997)	3	Screw
8	58611 (997)	1	Screw insulator
9	58332 (997)	1	Setscrew
10	58507 (997)	1	Lower hinge assembly
11	5850802 (997)	1	Link assembly, lh
12	5850801 (997)	1	Link assembly, rh
13	58116 (997)	1	Upper hinge
14	57970 (997)	1	Spring pin
15	58526 (997)	1	Pin, grooved
16	58364 (997)	1	Spring assembly
17	58404p1 (997)	1	Link brace
18	58122 (997)	1	Monitor pivot block
19	58644 (997)	1	Label, serial number

Pivot Mount (Upper or Lower)

Figure 5-3. Pivot Mount (Upper or Lower)



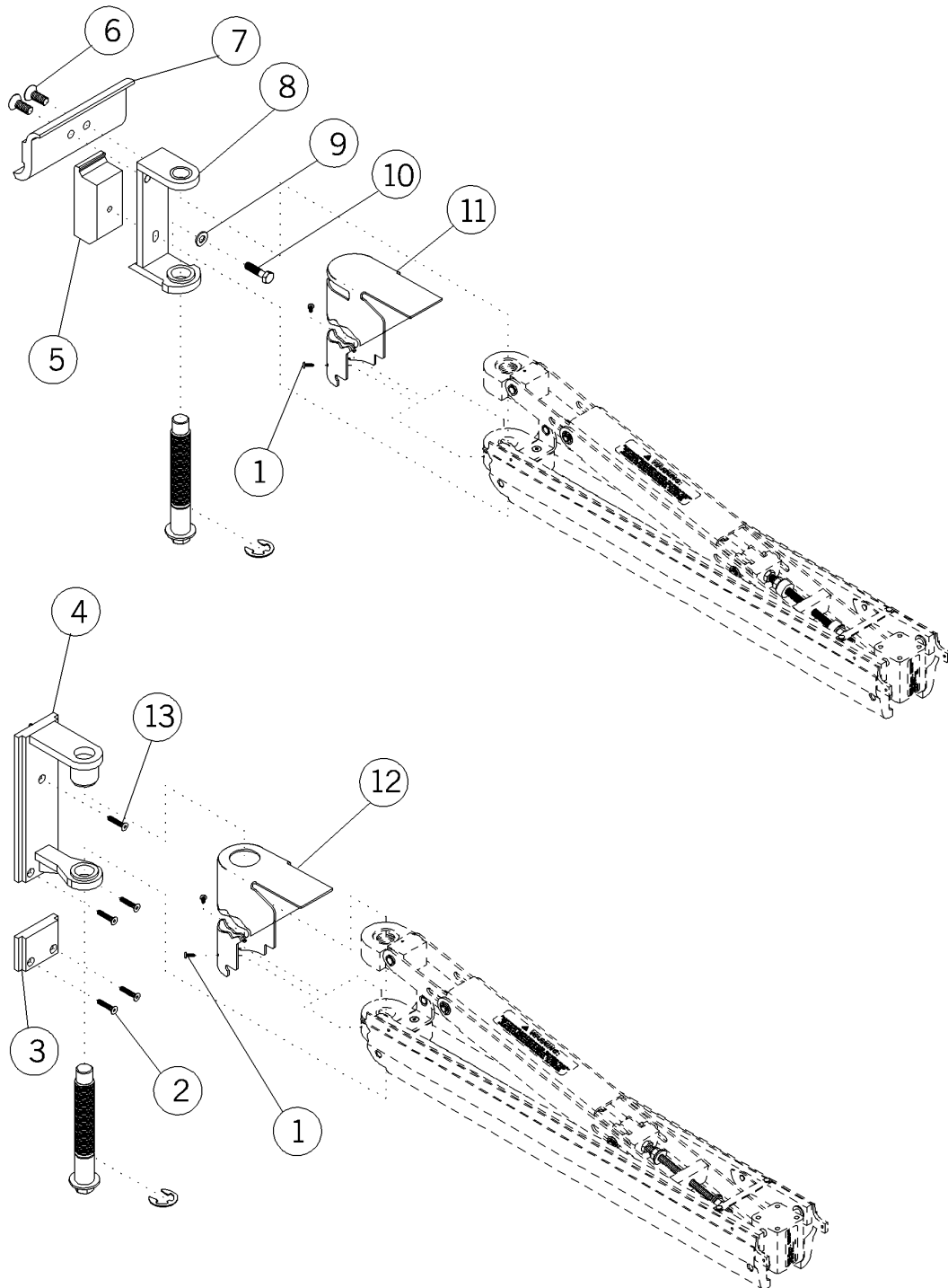
m131a002

Table 5-2. Pivot Mount (Upper or Lower)

Item Number	Part Number	Quantity	Description
1	58448 (997)	1	Cap screw
2	51625 (997)	4	Screw
3	58542 (997)	1	Monitor pivot plate, bottom
4	58444 (997)	2	Washer, nylon
5	5752601 (997)	4	Screw, cap
6	56602 (997)	1	Load capacity label, 80 lbs
7	58506 (997)	1	Monitor pivot adapter assembly
8	52945-01 (997)	8	Screw
9	58623 (997)	1	Warning label, position
10	5840202 (997)	1	End cap, pivot down
11	5840102 (997)	1	Top cover, pivot down
12	58622 (997)	2	Label, monitor arm
13	58544 (997)	3	Socket head cap screw
14	58121 (997)	1	Monitor pivot plate, top
15	5840201 (997)	1	End cap, pivot up
16	5840101 (997)	1	Top cover, pivot up
17	58758 (997)	1	Pivot duct cover, lower
18	58641 (997)	1	Pivot duct cover, upper
19	59209 (997)	1	Surface raceway

Monitor Arm Mount (Track or Integris Patient Light)

Figure 5-4. Monitor Arm Mount (Track or Integris Patient Light)



5

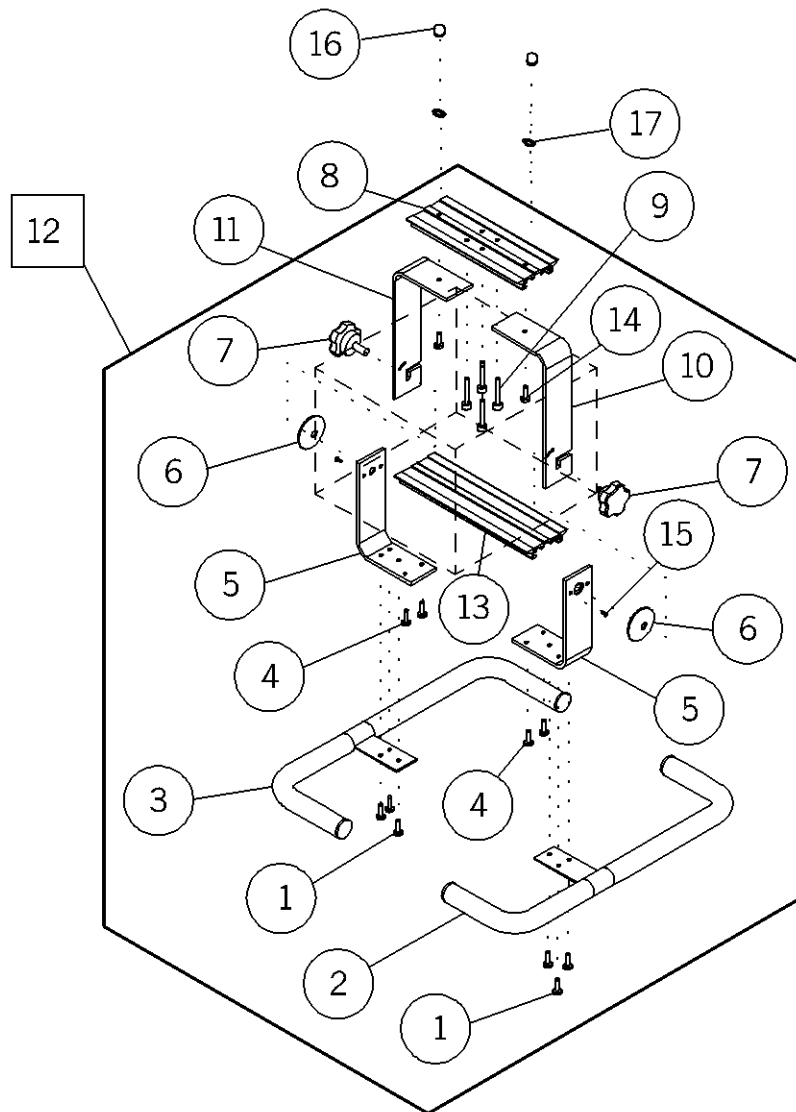
m131a003

Table 5-3. Monitor Arm Mount (Track or Integris Patient Light)

Item Number	Part Number	Quantity	Description
1	52945-06 (997)	2	Screw
2	56336-06 (997)	4	Screw, cap
3	58631 (997)	1	Support block
4	58601 (997)	1	Pivot mount assembly, track
5	58406 (997)	1	Pivot mount clamp block
6	58362 (997)	2	Socket head cap screw
7	58405 (997)	1	Arm mount
8	58509 (997)	1	Pivot mount assembly, clamp
9	58361 (997)	1	Flatwasher
10	58608 (997)	1	Hex head cap screw
11	5840301 (997)	1	Hinge cover, clamp mount
12	5840302 (997)	1	Hinge cover, track mount
13	58718 (997)	1	Setscrew

Monitor Mount (GCX)

Figure 5-5. Monitor Mount (GCX)



m131_004

Table 5-4. Monitor Mount (GCX)

Item Number	Part Number	Quantity	Description
1	SA7357 (997)	6	Screw
2	SA7358 (997)	1	Bumper handle—rh
3	SA7359 (997)	1	Bumper handle—lh
4	SA7360 (997)	4	Screw
5	SA7361 (997)	2	Bottom arm
6	SA7362 (997)	2	Neoprene washer
7	SA7363 (997)	2	Knob
8	SA7365 (997)	1	Top channel
9	SA7366 (997)	4	Allen bolt head
10	SA7367 (997)	1	Top arm—rh
11	SA7369 (997)	1	Top arm—lh
12	992-00 (997)	1	Monitor yoke assembly
13	SA7368 (997)	1	Bottom channel
14	SA7370 (997)	2	Screw
15	SA7377 (997)	2	Screw
16	SA7371 (997)	2	Washer
17	SA7372 (997)	2	Dome nut

NOTES:

Chapter 6

General Procedures

Chapter Contents

Cleaning and Care.....	6 - 3
Steam Cleaning.....	6 - 3
Hard to Clean Spots	6 - 3
Disinfection.....	6 - 3
Lubrication Requirements.....	6 - 3
Preventive Maintenance	6 - 4
Preventive Maintenance Schedule	6 - 5
Preventive Maintenance Checklist	6 - 6
Tool and Supply Requirements.....	6 - 7
Installation Instructions.....	6 - 8
Mounting the Integris Monitor Arm.....	6 - 8
Vertical Track Mount	6 - 8
Integris Patient Light Mount.....	6 - 10
Monitor Installation	6 - 12
Spring Tension Adjustment	6 - 14
Vertical Travel Adjustment	6 - 15

NOTES:

Cleaning and Care



CAUTION:

Do not use harsh cleaners, solvents, or detergents. Damage to the unit could occur.

Clean the unit with a lightly dampened cloth and ordinary disinfectants. Do not subject any area to excessive amounts of liquid.

Steam Cleaning

Do not use any steam cleaning device on the Integris Monitor Arm. The excessive moisture involved can damage mechanisms and components in the unit.

Hard to Clean Spots

Use standard household cleaners and/or a soft bristle brush to remove troublesome spots or stains. If necessary, first soak heavy dried-on soil.

Disinfection

Dilute disinfectants and/or germicides as specified on the manufacturer's label.

Lubrication Requirements

The Integris Monitor Arm has no periodic lubrication requirements.

Preventive Maintenance

The Integris Monitor Arm must have an effective maintenance program. We recommend that you perform preventive maintenance and testing for Joint Commission on Accreditation of Healthcare Organizations (JCAHO) annually. This not only meets JCAHO requirements, but will help to ensure a long and productive life for the Integris Monitor Arm. This will help minimize downtime due to excessive wear failures.

The preventive maintenance schedule that follows is intended to guide the technician through a normal preventive maintenance procedure on the Integris Monitor Arm. Check each item on the schedule, and make any necessary adjustments during the preventive maintenance process.

The preventive maintenance schedule is intended to be used in conjunction with the preventive maintenance checklist following it. This checklist is designed to keep a running history of maintenance and subsequent repair costs for one individual Integris Monitor Arm. However, the facility can modify this checklist or create one to fit its needs. Keeping close records and maintaining the Integris Monitor Arm are two good ways of reducing downtime and at the same time, keeping the nursing staff happy and efficient.

Preventive Maintenance Schedule

Table 6-1. Preventive Maintenance Schedule

Function	Procedure
Spring tension	Check the monitor arm for drift.
Wall mount	Make sure the mount (track or Integris Patient Light) is secure and not loose.
Monitor mount	Make sure the monitor is securely mounted and not loose. Refer to the manufacturer's (GCX) instructions.
Overall appearance	Check the general appearance of the unit. Touch up the paint where necessary. Inspect the labels, and replace as necessary.

Preventive Maintenance Checklist

Table 6-2. Preventive Maintenance Checklist

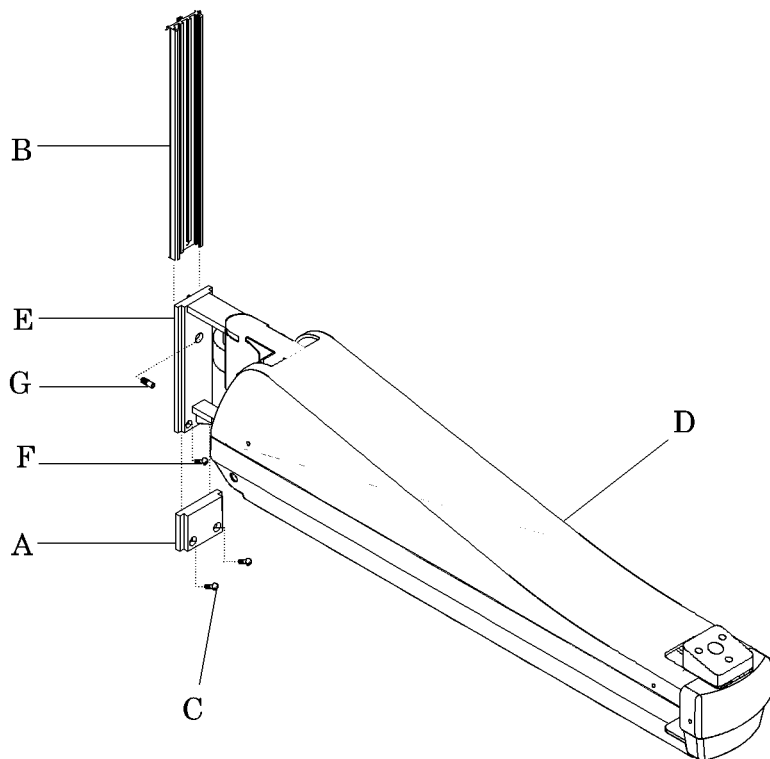
Date																Function	
Hill-Rom Company Inc.	Manufacturer																Spring tension
																	Wall mount
																	Monitor mount
																	Overall appearance
	Model Number																
	Serial Number																
Total Cost for This Page																Labor Time:	
																Repair Cost:	
																Inspected By:	
																Legend L=Lube C=Clean A=Adjust R=Repair or Replace O=Okay N=Not Applicable Remarks:	



Tool and Supply Requirements

The Integris Monitor Arm requires no special tools or supplies.

Figure 6-1. Vertical Track Mount



m131a014



WARNING:

Do not attempt to install a monitor arm with a monitor attached. Serious personal injury or damage to equipment could occur.

2. Install the monitor arm (D) in the vertical track as follows:
 - a. Orient the monitor arm so that the two screw holes in the pivot mount assembly (E) are located at the bottom of the pivot mount assembly. Install the pivot mount assembly of the monitor arm in the vertical track (B).
 - b. Lower the monitor arm (D) until the pivot mount assembly (E) rests on the pivot stop block (A).
 - c. Using a 1/8" allen wrench, install two allen screws (F) through the pivot mount assembly (E) into the screw holes of the vertical track (B).

- d. Using a 1/8" allen wrench, install the setscrew (G) through the pivot mount assembly (E). Tighten the setscrew to seat it against the vertical track (D).

Integris Patient Light Mount

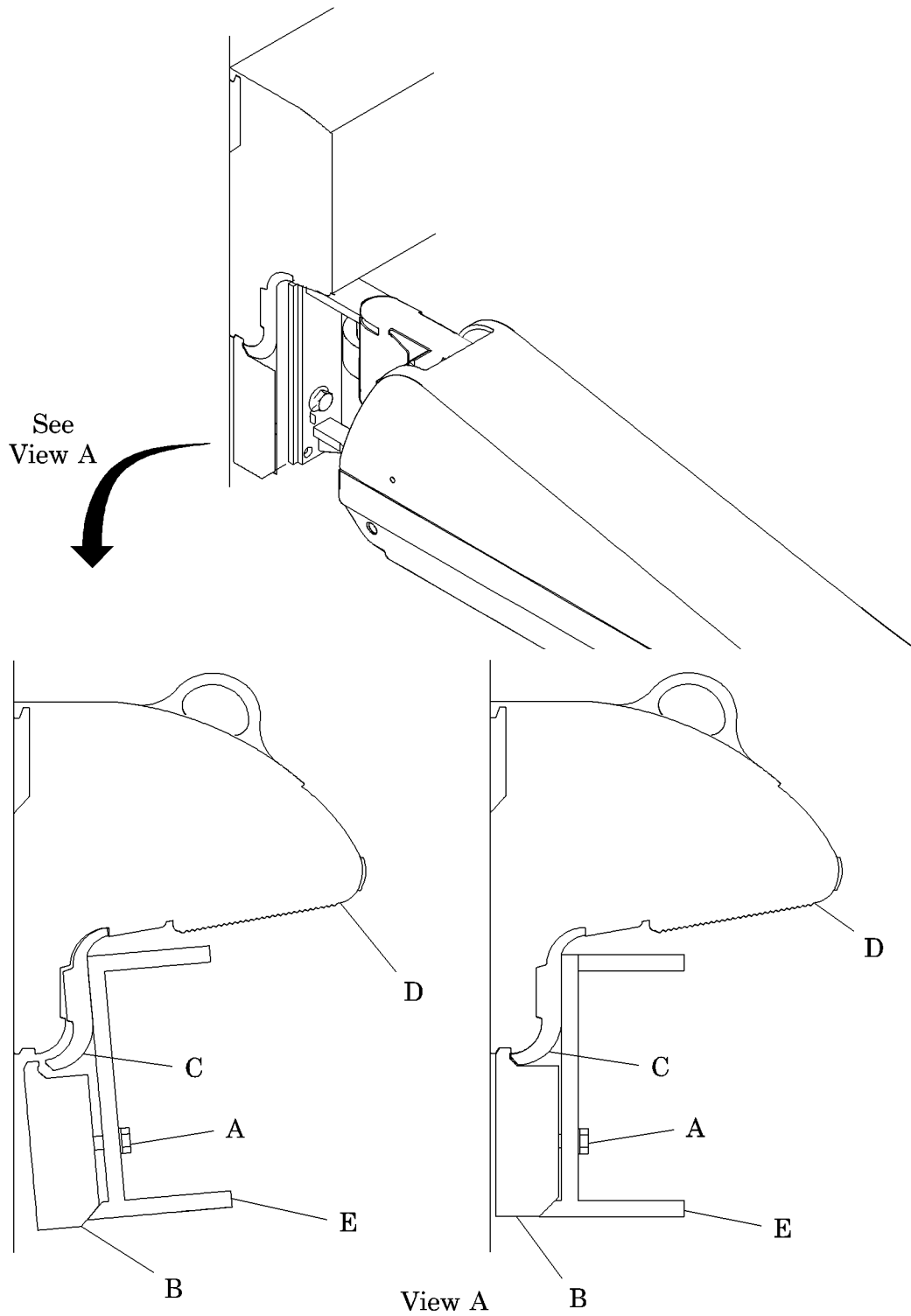


WARNING:

Do not attempt to install a monitor arm with a monitor attached. Serious personal injury or damage to the equipment could occur.

1. Make sure the screw (A) is loose enough to allow the top lip of the clamp block (B) to be flush or below the edge of the arm mount (C) (see figure 6-2 on page 6-11).
2. Install the monitor arm on the Integris Patient Light as follows:
 - a. Position the monitor arm under the Integris Patient Light housing (D).
 - b. Holding the monitor end of the monitor arm up, engage the curved lip on top of the arm mount (C) with the recess in the underside of the Integris Patient Light housing (D).
 - c. Lower the monitor end of the monitor arm to allow the clamp block (B) to contact the wall. Do not allow the arm mount (C) to disengage from the recess in the Integris Patient Light housing (D).
 - d. Holding the clamp block (B) against the wall and using a torque wrench, torque the cap screw (A) to 195-215 in-lb (22.1-24.2 N•m). As you torque the cap screw, make sure the clamp block engages with the slot in the bottom of the light housing (D).

Figure 6-2. Integris Patient Light Mount



m131_015/m131_016

Monitor Installation

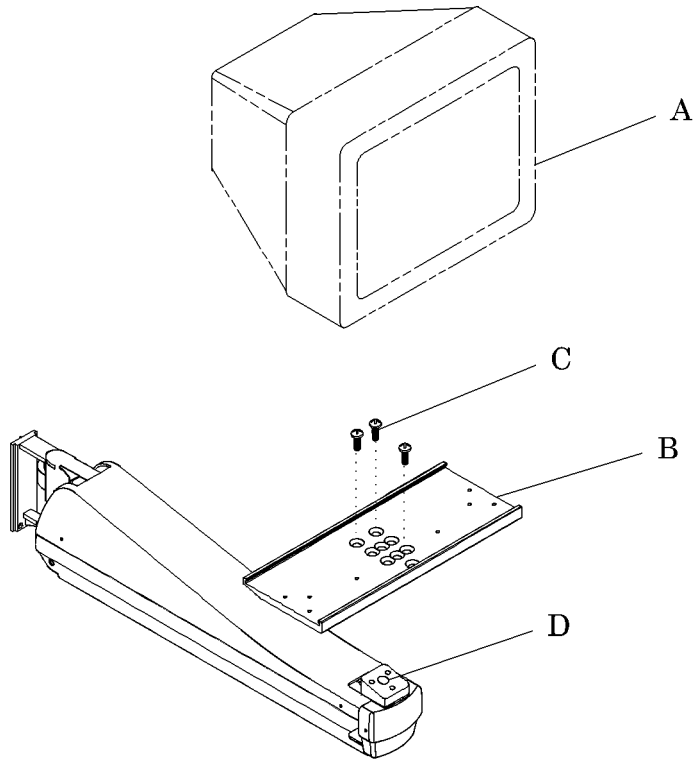
The monitor arm is ordered from the factory in one of two monitor mounting configurations.

NOTE:

For lighter monitors, the spring tension of the monitor arm can be reduced before installing the monitor. The load screw is easier to turn without the monitor installed.

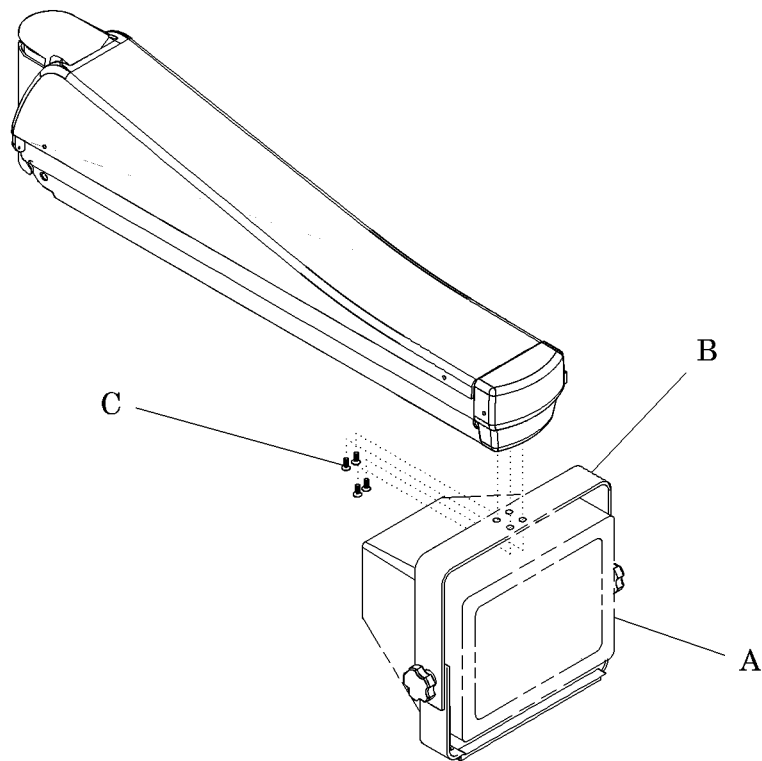
1. Install a top mounted monitor (A) as follows:
 - a. Using a 3/16" allen wrench, install the monitor mounting plate (B) with the three screws (C) on the monitor pivot plate (D) (see figure 6-3 on page 6-13).
 - b. Install the monitor (A) on the monitor mounting plate (B). Refer to the manufacturer's (GCX) instructions for monitor installation.
2. Install a bottom mounted monitor as follows:
 - a. Using a 3/16" allen wrench, install the monitor mount (B) with the four screws (C) on the monitor pivot plate (see figure 6-4 on page 6-14).
 - b. Install the monitor (A) on the monitor mount (B). Refer to the manufacturer's (GCX) instructions for monitor installation.

Figure 6-3. Top Mounted Monitor



m131_017

Figure 6-4. Bottom Mounted Monitor



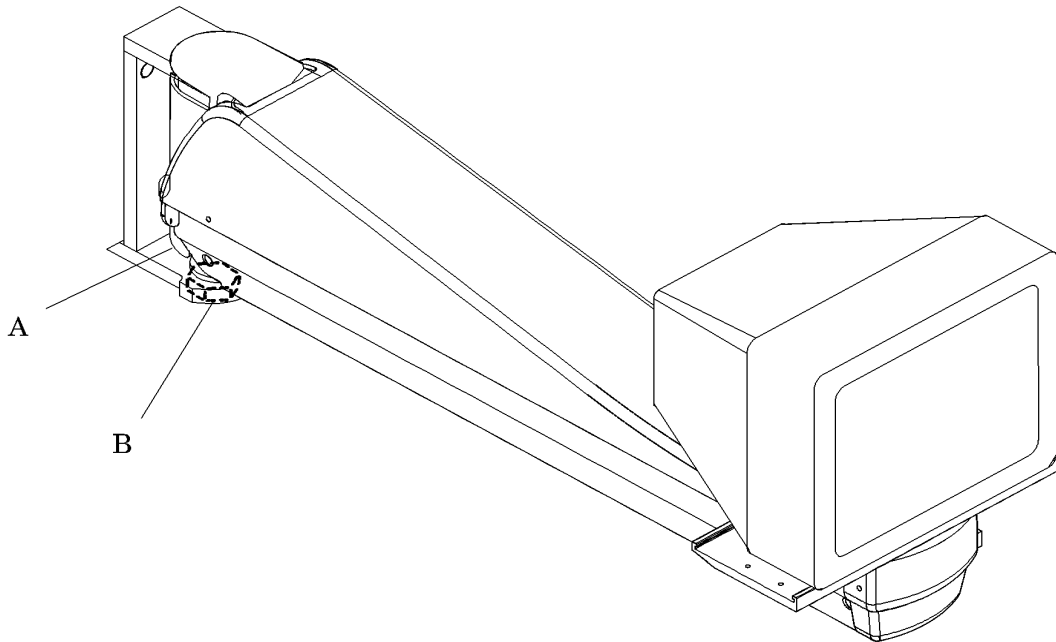
m131_018

Spring Tension Adjustment

1. Move the monitor arm to the maximum down position and check for drift. Move the monitor arm to the maximum up position, and check for drift. When the spring tension is adjusted correctly, the monitor arm will not drift up or down.
2. If the monitor arm drifts upward, adjust the spring tension as follows (see figure 6-5 on page 6-15):
 - a. Using a 1/8" allen wrench, loosen the setscrew (A) in the lower hinge.
 - b. Looking up from underneath the monitor arm and using a 3/4" socket with a drive ratchet, turn the load screw (B) clockwise to reduce the spring tension, and eliminate the upward drift.
 - c. Using a 1/8" allen wrench, tighten the setscrew (A) in the lower hinge.
3. If the monitor arm drifts downward, adjust the spring tension as follows:
 - a. Using a 1/8" allen wrench, loosen the setscrew (A) in the lower hinge.

- b. Looking up from underneath the monitor arm and using a 3/4" socket with a drive ratchet, turn the load screw (B) counterclockwise to increase the spring tension, and eliminate the downward drift.
 - c. Using a 1/8" allen wrench, tighten the setscrew (A) in the lower hinge.
4. Move the monitor arm to the maximum down position, and check for drift. Move the monitor arm the maximum up position, and check for drift. If drift occurs, repeat the adjustment procedure.

Figure 6-5. Spring Tension Adjustment



m131_019

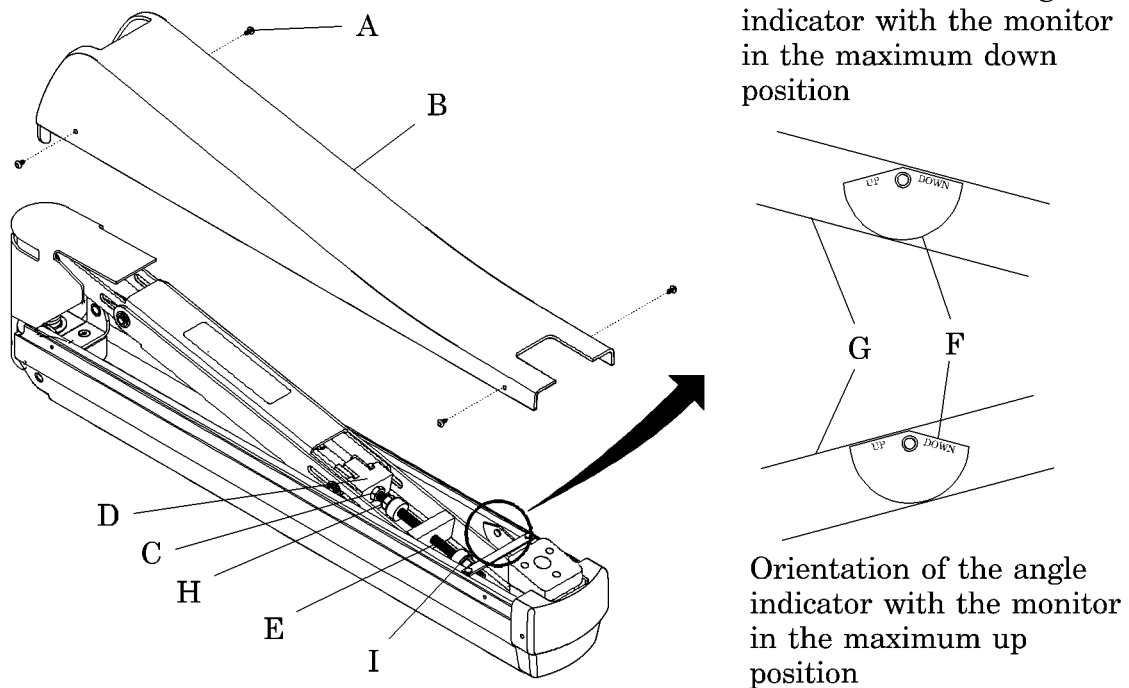
Vertical Travel Adjustment

The monitor arm is capable of approximately 30° of travel in the vertical direction. If your application requires a smaller amount of travel, you can adjust the up and down travel stops individually to reduce the travel. Using the following procedure, adjust the vertical travel as needed:

1. Using a #2 phillips head screwdriver, remove the four screws (A) and the top cover (B) (see figure 6-6 on page 6-16).
2. Make sure the jam nut (C) is seated against the spring block (D). If the jam nut is not seated:

- a. Using a 1/4" open end wrench, hold the threaded rod (E) at the wrenching flats on the end of the threaded rod.
- b. Using a 1/2" open end wrench, seat the jam nut against the spring block.

Figure 6-6. Vertical Travel Adjustment



m131_020

3. Check the down position travel stop. Move the arm to the maximum down position. Observe the angle indicator (F) located on the link (G) inside the arm assembly. The top edge of the angle indicator should be flush (parallel) with the top edge of the link for maximum downward travel.
4. If the top edge of the indicator (F) and the top edge of the link (G) are not flush, adjust the travel stop to obtain the maximum downward travel:
 - a. Using a 1/4" open end wrench, hold the end of the threaded rod (E) at the wrenching flats.

- b. Using a 1/2" open end wrench, turn the inboard nut (H) to adjust the downward travel limit of the arm. Turn the nut until the top edge of the angle indicator (F) is flush with the top edge of the link (G).
5. Check the up position travel stop. Move the arm to the maximum up position. Observe the angle indicator (F) located on the link (G) inside the arm assembly. The top edge of the angle indicator should be flush (parallel) with the top edge of the link for maximum upward travel.
6. If the top of the indicator (F) and link (G) are not flush, adjust the arm travel as follows to obtain the maximum upward travel:
 - a. Using a 1/4" open end wrench, hold the end of the threaded rod (E) at the wrenching flats.
 - b. Using a 1/2" open end wrench, turn the outboard nut (I) to adjust the upward travel limit of the arm. Turn the nut until the top edge of the angle indicator is flush with the top edge of the link.
7. Using a #2 phillips head screwdriver, install the top cover (B) with the four screws (A).

NOTES:

Chapter 7

Accessories

Chapter Contents

There are currently no accessories for the Integris Monitor Arm.

NOTES:
