

OmniRx Cooling Fan Installation Instructions

60-0070 Rev B

Field Retrofit Instructions for
Kit 20-0057



This guide is CONFIDENTIAL and designed only for Omnicell Technical personnel and/or designated representatives.

This guide and accompanying software and/or hardware described in it are protected under copyright laws and may not be copied, wholly or in part, without the express written consent of Omnicell, Inc. The same proprietary and copyright notices must be attached to any permitted copies as were attached to the original documents.

Omnicell, Inc.
1201 Charleston Road
Mountain View, CA 94043
(650) 251-6100
www.omnicell.com

Omnicell and the Omnicell design mark, OmniBuyer, OmniCenter, OmniRx, OmniSupplier, Pandora, PandoraVIA, SafetyMed, SafetyStock, and Sure-Med are registered trademarks. Anesthesia TT, Anesthesia Workstation, Anywhere RN, Executive Advisor, FlexBin, Medication Surveillance, OmniDispenser, OmniLinkRx, OmniScanner, OmniTrack, Omni TT, Open Touch, OptiFlex, OptiFlex MobileTrack, Point-to-Point Medication Safety, ProServ1, SecureVault, See & Touch, SinglePointe, TempCheck, Touch & Go, vSuite, and WorkflowRx are trademarks of Omnicell, Inc. in the United States and internationally. All other trademarks and trade names are the property of their respective owners.

Copyright 2004-2011 Omnicell, Inc. All rights reserved.

Table of Contents

Installation	1-1
Procedure Overview	1-1
Parts Required	1-1
Tools Required	1-1
Installation Instructions	1-2
Prepare the Cabinet	1-2
Install the Pressure Plate	1-3
Install the Fan Assembly	1-4
Appendix A: Parts	A-1
Documentation Feedback	FB-1

Installation

Procedure Overview

This document provides instructions for installing a cooling fan assembly in an OmniRx CT or OmniTT CT cabinet, using manufacturing kit 20-0057.

Procedure Type	Field Retrofit
Products Affected	OmniRx and OmniTT Color Touch cabinets manufactured prior to April 2004
Optional/Mandatory	Optional; as needed
Purpose	Install as needed to increase airflow to the console, and reduce heat distribution to the uppermost drawers

Parts Required

To perform this installation procedure, order the following kit from Omnicell Order Entry. For detailed kit information, see [“Appendix A: Parts”](#).

Part Number	Quantity	Ordering Description
20-0057	1	Kit, Cooling Retrofit, OmniRx

Tools Required

- T-10 Torx Driver
- 1/4" Nut Driver

Installation Instructions

The following are instructions for installing a cooling fan assembly in an OmniRx CT or OmniTT CT cabinet, using manufacturing kit 20-0057. See “[Procedure Overview](#)” for information on the parts and tools referred to in these instructions.



Important: Put on an ESD wrist strap and secure it to ground, prior to handling any electronics.



Note: If the cabinet contains medications, an authorized pharmacy representative must be present during the procedure

Prepare the Cabinet

1. Power down the cabinet, and disconnect power.
2. Open the cabinet lid.
3. Check if the unit has a keyboard cover bracket installed; if not, install the cover bracket provided in the kit (required).

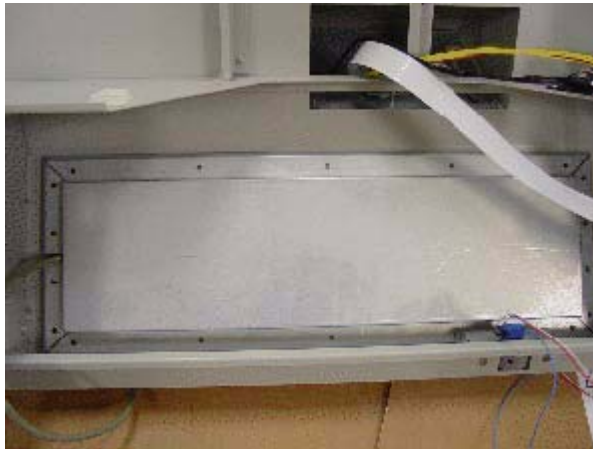


Figure 1-1. Keyboard cover bracket

Install the Pressure Plate

1. If not already done, remove the center nuts from the top and bottom of the keyboard cover bracket.
 - Nuts: #4 Hex
 - Tool: 1/4" Nut Driver

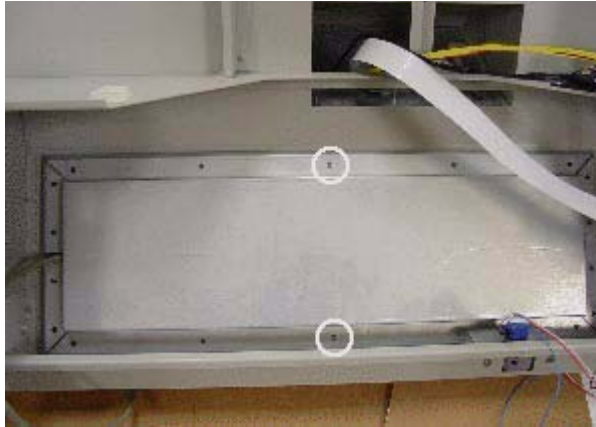


Figure 1-2. Keyboard cover bracket nuts

2. Install the pressure plate, by placing it over the two center posts and re-installing the two nuts. In order to fit the plate over the keyboard bracket, bend it slightly, maneuver it onto the bracket, then bend it back.



Figure 1-3. Installing the pressure plate

Install the Fan Assembly

When properly installed, the fan assembly lies to the left of the pressure plate (as viewed from the rear of the cabinet).

1. Loosen the three screws on the fan assembly and slide into the three corresponding slots on the center, vertical wall of the sled.
 - Screws: 6-32 Button-head
 - Tool: T10 Torx Driver



Figure 1-4. Slots for fan assembly screws

2. Make sure the fan assembly is flush with the floor of the sled and route cables as follows:
 - a. Route the keyboard cable through the dedicated slot in the front of the bracket.
 - b. Route the hard drive power cable through the dedicated slot in the rear of the bracket.
 - c. Route all other cables through the 1" opening near the center of the bracket.Cables may need to be disconnected and reconnected to route through this slot.

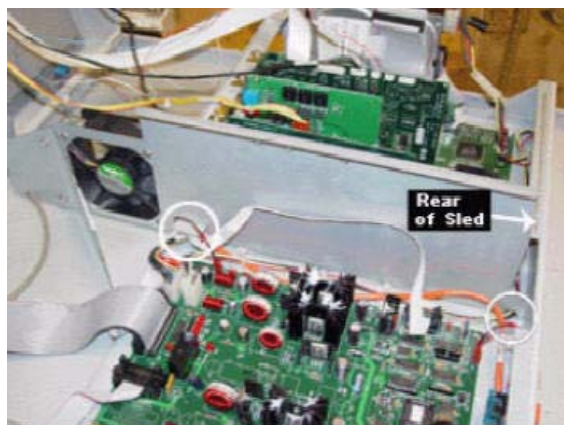


Figure 1-5. Routing cables

3. Tighten the three screws securing the fan assembly to the sled.

4. Connect the fan power cable to J15 on the UPS board.

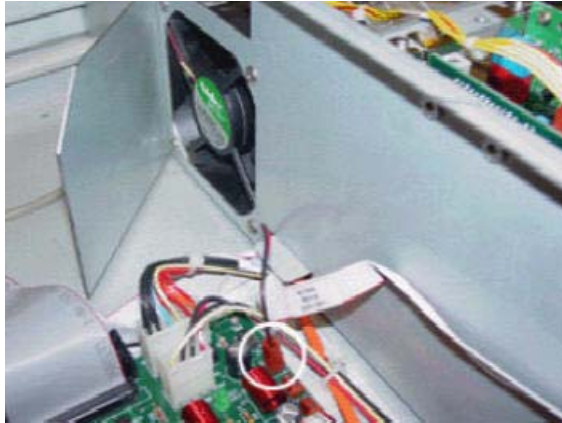


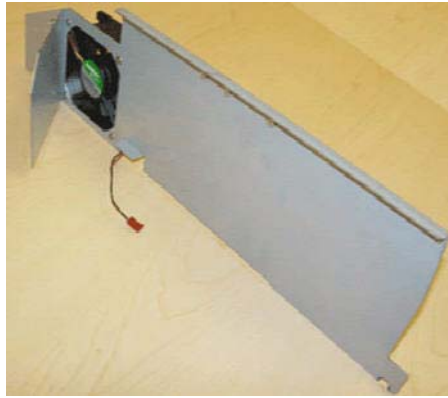
Figure 1-6. Connecting the fan power cable

5. Verify that the cabinet lid will open and shut completely without damaging any cables, then close and lock the lid.
6. Reconnect cabinet to power and reboot.

Appendix A: Parts

The following is a complete parts list for this specific procedure.

Level ^a	Part #	Qty	Ordering Description	Alias/Notes
1	20-0057	1	KIT COOLING,RETROFIT,OMNIRX	
2	14-1229	1	MFG,ASSY Fan,Plate Retrofit,Cooling OMNIRX	



2	53-1082	1	BKT,COVER,KEYBD,OMNIRX	Not required for cabinets mfd. after January 2003.
---	---------	---	------------------------	--



2	53-7234	1	BKT,PRESSURE,PLATE RETROFIT OMNIRX	
---	---------	---	------------------------------------	--

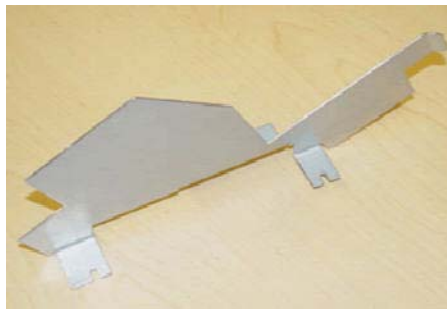


Table A-1. OmniRx Cooling Fan Installation Parts

a. Level 1 indicates a kit, assembly or part; Level 2 indicates a sub-assembly/part associated with the level 1 item; Level 3 indicates a sub-assembly/part associated with the level 2 item.

Documentation Feedback

This document is designed to provide relevant technical information to those responsible for the implementation, service, and support of Omnicell products. The Documentation team needs your input, so we can continue to improve our publications.

Sending Comments to the Technical Documentation Team

Did this document meet your needs? If so, please let us know what we're doing right. If not, please provide specific feedback. Email or fax your feedback as follows:

- Email: **Documentation Requests** email group at documentationrequests@omnicell.com (specify the document title or PN).
- Fax: Send this page, along with your feedback, to **(650) 251-6266**, attention: Documentation.

This document is designed to provide relevant technical information to Omnicell personnel responsible for the implementation, service, and support of Omnicell Automation Systems.

Feedback Form

Name:	Email:
Dept./Title:	Phone:
Feedback:	
<hr/>	
<hr/>	
<hr/>	
<hr/>	
<hr/>	
<hr/>	
<hr/>	
<hr/>	
<hr/>	
<hr/>	
<hr/>	
<hr/>	
<hr/>	
<hr/>	
<hr/>	
<hr/>	
<hr/>	
<hr/>	
<hr/>	

