

# G4 Wireless Adapter Replacement

67-2108 Rev A

For AWS, OmniRx, and CT cabinets



This guide is CONFIDENTIAL and designed only for Omnicell Technical personnel and/or designated representatives.

This guide and accompanying software and/or hardware described in it are protected under copyright laws and may not be copied, wholly or in part, without the express written consent of Omnicell, Inc. The same proprietary and copyright notices must be attached to any permitted copies as were attached to the original documents.

Omnicell, Inc.  
1201 Charleston Road  
Mountain View, CA 94043  
(650) 251-6100  
[www.omnicell.com](http://www.omnicell.com)

Omnicell and the Omnicell design mark, OmniBuyer, OmniCenter, OmniRx, OmniSupplier, Pandora, PandoraVIA, SafetyMed, SafetyStock, and Sure-Med are registered trademarks. Anesthesia TT, Anesthesia Workstation, Anywhere RN, Executive Advisor, FlexBin, Medication Surveillance, OmniDispenser, OmniLinkRx, OmniScanner, OmniTrack, Omni TT, Open Touch, OptiFlex, OptiFlex MobileTrack, Point-to-Point Medication Safety, ProServ1, SecureVault, See & Touch, SinglePointe, TempCheck, Touch & Go, vSuite, and WorkflowRx are trademarks of Omnicell, Inc. in the United States and internationally. All other trademarks and trade names are the property of their respective owners.

Copyright 2011 Omnicell, Inc. All rights reserved.

# Table of Contents

|  |      |
|--|------|
| <b>AWS Wireless Adapter</b> .....        | 1-1  |
| Requirements .....                       | 1-1  |
| Linksys WMP600N Removal .....            | 1-1  |
| Asus PCE-N15 Installation .....          | 1-4  |
| <br>                                     |      |
| <b>OmniRx Wireless Adapter</b> .....     | 2-1  |
| Requirements .....                       | 2-1  |
| Linksys WMP600N Removal .....            | 2-1  |
| Asus PCE-N15 Installation .....          | 2-3  |
| <br>                                     |      |
| <b>CT Cabinet Wireless Adapter</b> ..... | 3-1  |
| Requirements .....                       | 3-1  |
| Linksys WMP600N Removal .....            | 3-1  |
| Asus PCE-N15 Installation .....          | 3-3  |
| <br>                                     |      |
| <b>Wireless Kit Installation</b> .....   | 4-1  |
| Requirements .....                       | 4-1  |
| Installation Procedure .....             | 4-1  |
| <br>                                     |      |
| <b>Driver Installation</b> .....         | 5-1  |
| <br>                                     |      |
| <b>Documentation Feedback</b> .....      | FB-1 |



# AWS Wireless Adapter

This chapter covers the following steps for the G4 AWS:

- Removing the Linksys WMP600N wireless adapter.
- Installing the Asus PCE-N15 wireless adapter (#71-1325).
- Installing wireless adapter driver.
- Installing parts from the wireless kit.

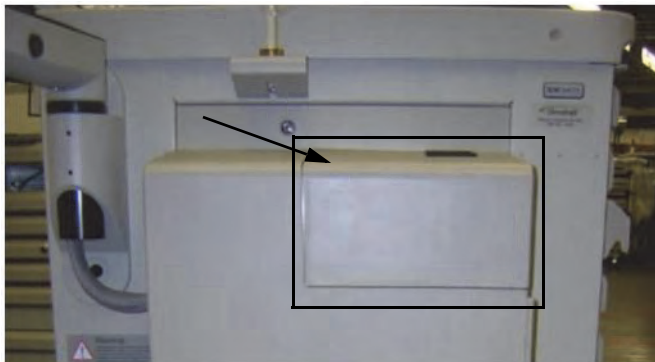
## Requirements

- Wireless Network Card (Asus PCE-N15)
- Asus PCE-N15 driver for Windows 7
- T-10 Torx screwdriver
- USB flash drive

## Linksys WMP600N Removal

Replace the Linksys WMP600N wireless adapter if installed.

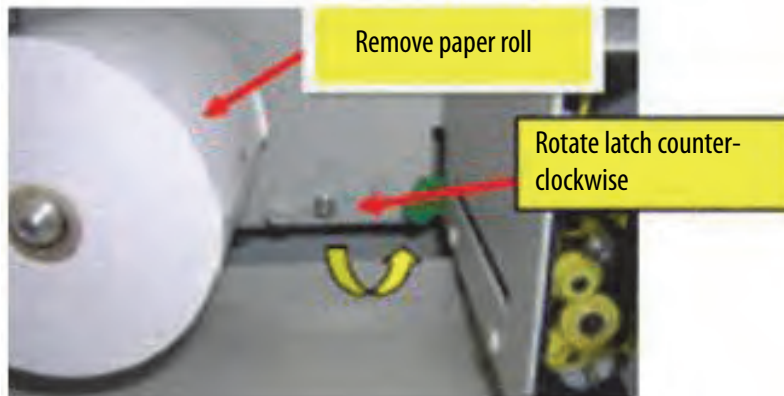
1. Record all wireless configuration information (network type, IP address, etc.).
2. Ensure that the system is powered down and that the AC power cord is disconnected.
3. Open the printer door.



**Figure 1-1.** Printer door

4. Remove the paper roll.

5. Ensure that the rotating latch inside is in the unlocked position (turn counter clockwise).



**Figure 1-2.** Printer roll and latch

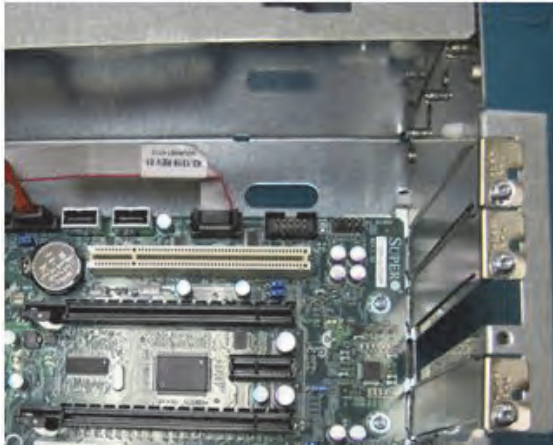
6. Use the 2378 key to unlock the AWS E-box and printer cover.
7. Carefully remove the AWS E-box and printer cover.
8. Unscrew the antennas from the Linksys WMP600N.



**Figure 1-3.** Antenna cables

9. Use a T10 Torx screwdriver to remove the screws that secure the E-box cover.
10. Remove the E-box cover.
11. Unplug the backup battery.
12. Use a T10 Torx screwdriver to remove the screw which holds the Linksys WMP600N in place.
13. Remove the Linksys WMP600N wireless adapter.

14. Use a T10 Torx screwdriver to remove the screw which holds the I/O plate that is two slots away from where the Linksys WMP600N wireless adapter was seated.



**Figure 1-4.** I/O plate removal

15. Move the I/O plate to the slot that once held the Linksys WMP600N then fasten it with a screw.

## Asus PCE-N15 Installation

1. Install the Asus PCE-N15 in the open I/O slot and fasten it with a screw.



**Figure 1-5.** Asus PCE-N15

2. Screw on the antennas.

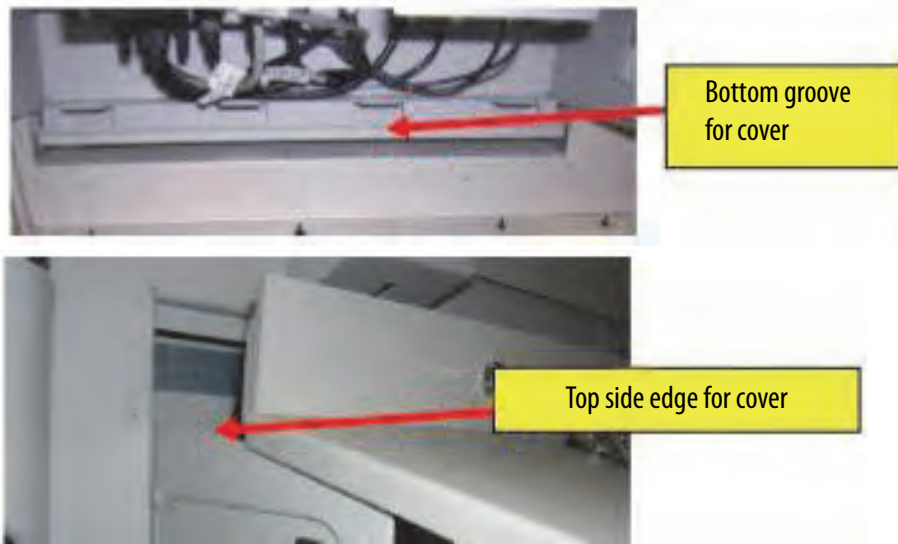


**Figure 1-6.** Connect antenna cables

3. Plug in the backup battery.
4. Place the E-box cover back on and secure it with the screws that were previously removed.



- Carefully place the E-box and printer cover back on.



**Figure 1-7.** Cover placement

- Ensure that the rotating latch inside of the printer door is in the locked position.



**Figure 1-8.** Printer door latch

- Insert the paper roll and feed the end into the printer.
- Use the 2378 key to lock the E-box and printer cover.
- Plug the AC power cord back in and power on the system.
- Install the driver. See [“Driver Installation”](#) on page 5-1.



# OmniRx Wireless Adapter

This chapter covers the following steps for the G4 OmniRx

- Removing the Linksys WMP600N wireless adapter.
- Installing the Asus PCE-N15 wireless adapter (#71-1325).
- Installing wireless adapter driver.
- Installing parts from the wireless kit.

## Requirements

- Wireless Network Card (Asus PCE-N15)
- Asus PCE-N15 driver for Windows 7
- T-10 Torx screwdriver
- USB flash drive

## Linksys WMP600N Removal

Replace the Linksys WMP600N wireless adapter if installed.

1. Record all wireless configuration information (network type, IP address, etc.).
2. Ensure that the system is powered down and that the AC power cord is disconnected.
3. Use the 2378 key to unlock the OmniRx lid.
4. Unscrew the antennas from the Linksys WMP600N.



**Figure 2-1.** Antenna cables

5. Use a T10 Torx screwdriver to remove the screws that secure the E-box cover.

6. Remove the E-box cover.
7. Unplug the backup battery.
8. Use a T10 Torx screwdriver to remove the screw which holds the Linksys WMP600N in place.



**Figure 2-2.** Linksys WMP600N adapter

9. Remove the Linksys WMP600N wireless adapter.
10. Use a T10 Torx screwdriver to remove the screw which holds the I/O plate that is two slots away from where the Linksys WMP600N wireless adapter was seated.



**Figure 2-3.** I/O plate removal

11. Move the I/O plate to the slot that once held the Linksys WMP600N then fasten it with a screw.

## Asus PCE-N15 Installation

1. Install the Asus PCE-N15 in the open I/O slot and fasten it with a screw.



**Figure 2-4.** Asus PCE-N15 adapter

2. Screw on the antennas.



**Figure 2-5.** Connect antenna cables

3. Plug in the backup battery.
4. Place the E-box cover back on and secure it with the screws that were previously removed.
5. Place the lid back into its original position.
6. Use the 2378 key to lock the lid
7. Plug the AC power cord back in and power on the system.
8. Install the driver. See [“Driver Installation”](#) on page 5-1.



# CT Cabinet Wireless Adapter

This chapter covers the following steps for G4 CT cabinets:

- Removing the Linksys WMP600N wireless adapter.
- Installing the Asus PCE-N15 wireless adapter (#71-1325).
- Installing wireless adapter driver.
- Installing parts from the wireless kit.

## Requirements

- Wireless Network Card (Asus PCE-N15)
- Asus PCE-N15 driver for Windows 7
- T-10 and T20 Torx screwdrivers
- USB flash drive

## Linksys WMP600N Removal

Replace the Linksys WMP600N wireless adapter if installed.

1. Record all wireless configuration information (network type, IP address, etc.).
2. Ensure that the system is powered down and that the AC power cord is disconnected.
3. Use the 2378 key to unlock the CT console.
4. If the screw that locks the CT console in place is present, use the T20 screwdriver to remove it.
5. Unscrew the antennas from the Linksys WMP600N.



**Figure 3-1.** Antenna cables



6. Use a T10 Torx screwdriver to remove the screws that secure the E-box cover.
7. Remove the E-box cover.
8. Unplug the backup battery.
9. Use a T10 Torx screwdriver to remove the screw which holds the Linksys WMP600N in place.



**Figure 3-2.** Linksys WMP600N adapter

10. Remove the Linksys WMP600N wireless adapter.
11. Use a T10 Torx screwdriver to remove the screw which holds the I/O plate that is two slots away from where the Linksys WMP600N wireless adapter was seated.



**Figure 3-3.** I/O plate removal

12. Move the I/O plate to the slot that once held the Linksys WMP600N then fasten it with a screw.



## Asus PCE-N15 Installation

1. Install the Asus PCE-N15 in the open I/O slot and fasten it with a screw.



**Figure 3-4.** Asus PCE-N15 adapter

2. Screw on the antennas.



**Figure 3-5.** Connect antenna cables

3. Plug in the backup battery.
4. Place the E-box cover back on and secure it with the screws that were previously removed.
5. Push the CT console back in place.
6. If the screw which locks the CT console was present, use the T20 screwdriver to put it back in place.
7. Use the 2378 key to lock the CT console.
8. Plug the AC power cord back in and power on the system.
9. Install the driver. See [“Driver Installation”](#) on page 5-1.



# Wireless Kit Installation

Install parts from the #20-7009 wireless kit on a 15.1 imaged system.

## Requirements

- Wireless Network Card (Asus PCE-N15)
- Asus PCE-N15 driver for Windows 7
- T-10 and T20 Torx screwdrivers
- USB flash drive

## Installation Procedure

1. Record all wireless configuration information (network type, IP address, etc.).
2. Ensure that the system is powered down and that the AC power cord and backup battery are disconnected.
3. Use the 2378 key to unlock, then remove the OmniRx lid, CT console, or AWS E-box cover depending on the type of cabinet being worked on.
4. Remove the third I/O plate from the edge of the motherboard.



**Figure 4-1.** Motherboard

5. Insert the Asus PCE-N15 into the black PCIe 1x port and gently push down on it until it is firmly seated.



**Figure 4-2.** Asus wireless adapter

6. Remove and save the star washer and nut from the antenna extension cable P/N 42-1343-01.
7. Slide the antenna extension cable through one of the holes provided in the plate.
8. Slide on the star washer all the way to the end of the connector then screw on the nut by hand until it reaches the star washer.



**Figure 4-3.** Secure one end of the antenna cable

9. Use an adjustable wrench while the back side of the connector on the other side of the 53-1179 plate (this part varies with platform) to screw on the nut so that it fits tightly against the star washer.



**Figure 4-4.** Tighten the nut for the antenna

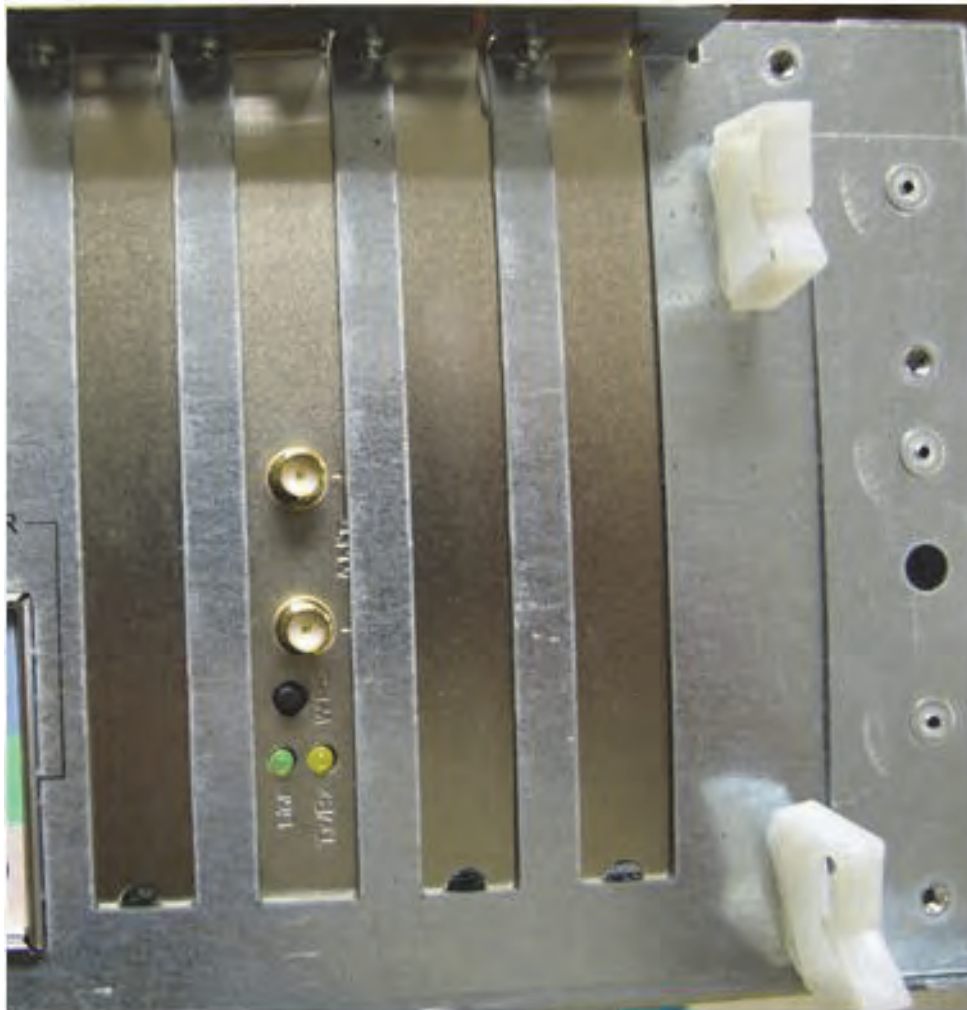
10. Repeat steps 5-8 for the second antenna extension cable.
11. Remove the plate that has the antenna extensions already in place.
12. Screw the antennas onto the antenna extension connectors.



**Figure 4-5.** Secure the other end of the antenna cable

13. Remount the plate.

14. Screw the other ends of the extension cable connectors onto the antenna connectors of the Asus PCE-N15.



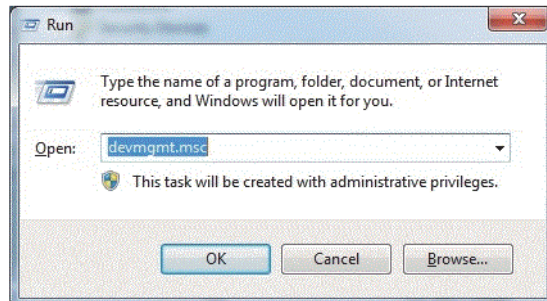
**Figure 4-6.** Extension cable connectors

15. Install the driver for the wireless adapter.
16. Secure the OmniRx lid, CT console, or AWS E-box cover (depending on the type of cabinet being worked on) using the 2378 key.
17. Plug the AC power cord back in and power on the system.
18. Install the driver. See [“Driver Installation”](#) on page 5-1.



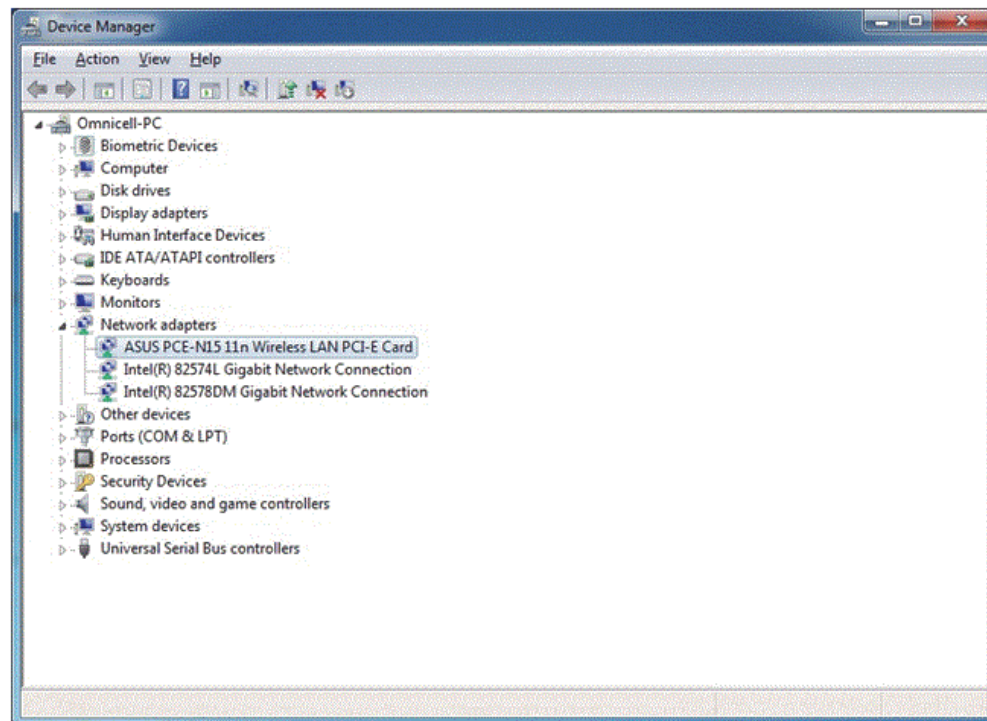
# Driver Installation

1. Exit out of the Omnicell software into the Windows desktop.
2. Press the Windows + r keys to display the Run window.
3. Type in devmgmt.msc.



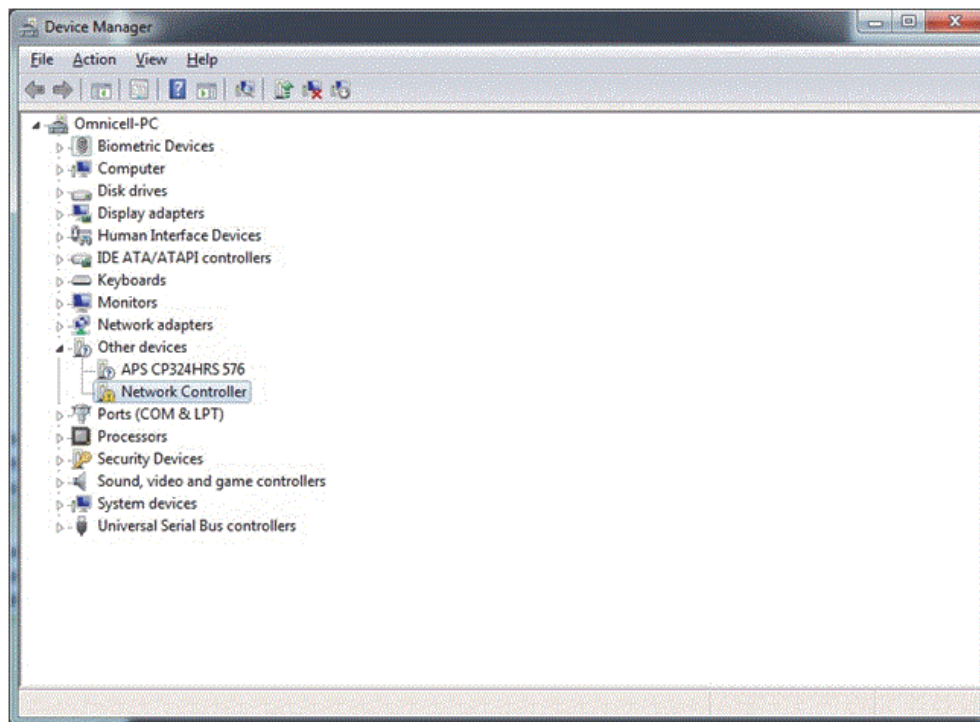
**Figure 5-1.** Run window

4. Click **OK**.
  - If a listing called ASUS PCE-N15 11n Wireless LAN PCI-E Card displays under Network Adapters, close the Device Manager window. This section is complete.



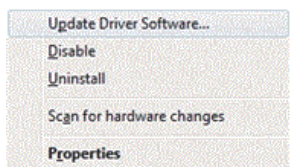
**Figure 5-2.** Device Manager window - Network Adapters list w/Asus

- If the entry Network Controller appears with a yellow exclamation point next to it, proceed with the rest of the steps in this section.



**Figure 5-3.** Device Manager window - Network Adapter list w/Network Controller

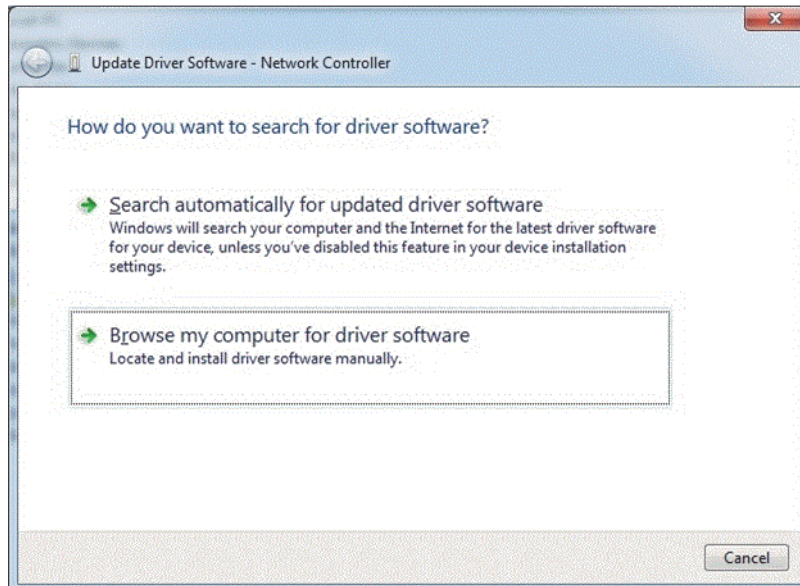
5. Download the DR\_PCE\_N15\_1006.zip file to a laptop from the Omnicell FTP address. Copy and paste (or type in) the following IP address into a browser to access the zip file.  
<https://ftp.omnicell.com/human.aspx?r=1868660361&Arg12=fileview&Arg11=1&Arg07=765002001&Arg06=764987023>
6. Use a USB flash drive to transfer the DR\_PCE\_N15\_1006.zip file to the target AWS system.
7. Extract the contents of DR\_PCE\_N15\_1006.zip to the AWS desktop.
8. Select the **Network Controller** then press **Appl** (or right click on **Network Controller**).
9. Select **Update Driver Software...**



**Figure 5-4.** Network Controller options

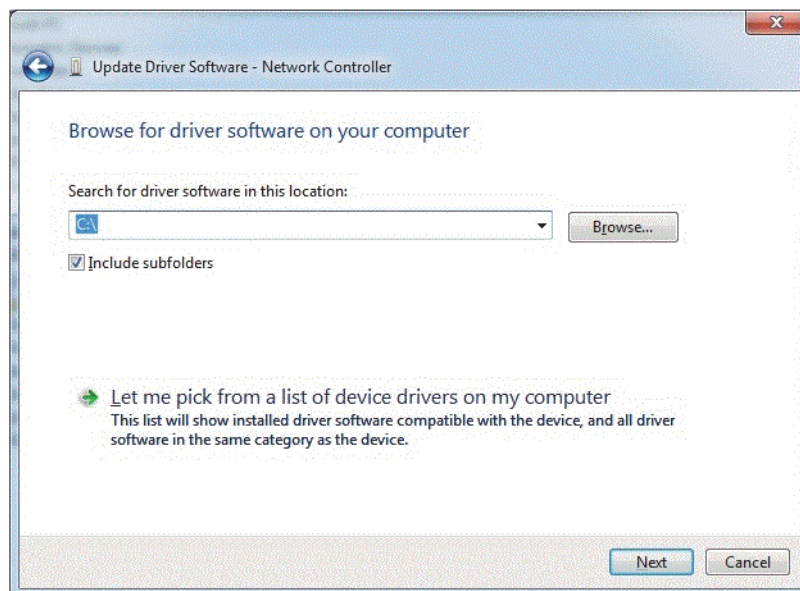


10. Select **Browse my computer for driver software**.



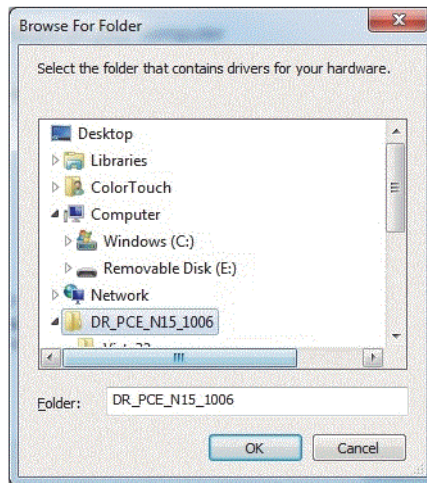
**Figure 5-5.** Browse my computer - option

11. Select **Browse...**



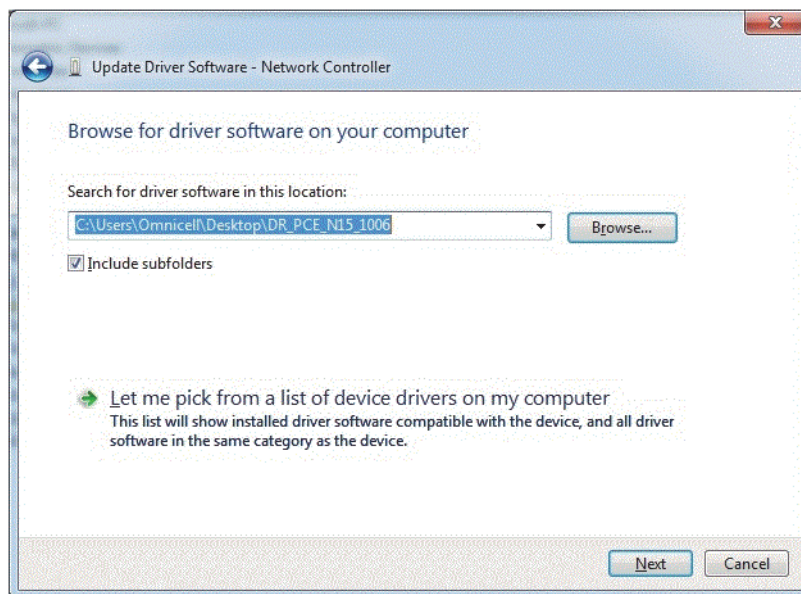
**Figure 5-6.** Browse button

12. Navigate to the **DR\_PCE\_N15\_1006** directory, then click **OK**.



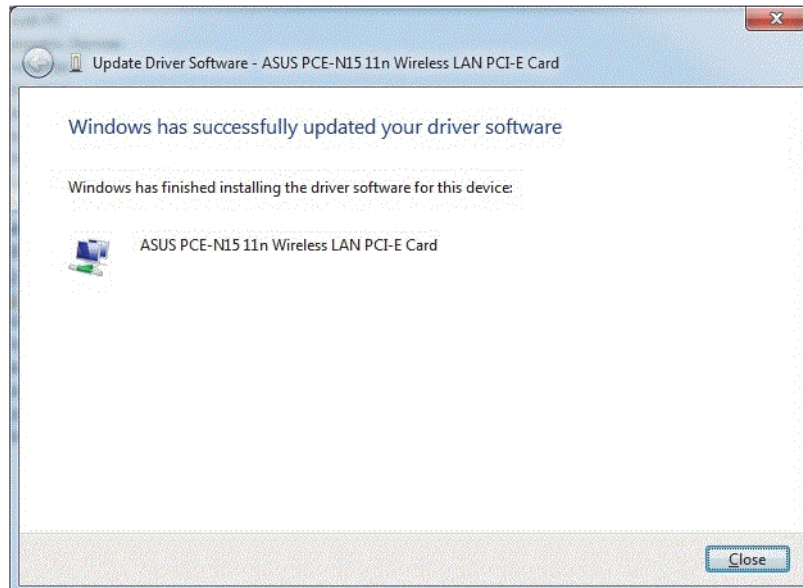
**Figure 5-7.** Browse for Folder window

13. Ensure that Include sub-folders is checked, then click **Next**.



**Figure 5-8.** Update Drives Software window

14. Click **Close** once the driver installation is completed.



**Figure 5-9.** Completion message

15. Reboot the system.

16. Connect to the wireless network using the information recorded in step 1 of the Linksys WMP600N Removal section on page 1-1, 2-1, 3-1 or Installation Procedure on page 4-1.



# Documentation Feedback

This document is designed to provide relevant technical information to those responsible for the implementation, service, and support of Omnicell products. The Documentation team needs your input, so we can continue to improve our publications.

## Sending Comments to the Technical Documentation Team

Did this document meet your needs? If so, please let us know what we're doing right. If not, please provide specific feedback. E-mail or fax your feedback as follows:

- E-mail: **Documentation Requests** e-mail group at **documentationrequests@omnicell.com** (specify the document title or PN).
- Fax: Send this page, along with your feedback, to **(650) 251-6266**, attention: Documentation.

This document is designed to provide relevant technical information to Omnicell personnel responsible for the implementation, service, and support of Omnicell Automation Systems.

## Feedback Form

|                     |                |
|---------------------|----------------|
| <b>Name:</b>        | <b>E-mail:</b> |
| <b>Dept./Title:</b> | <b>Phone:</b>  |
| <b>Feedback:</b>    |                |
| <hr/>               |                |
| <hr/>               |                |
| <hr/>               |                |
| <hr/>               |                |
| <hr/>               |                |
| <hr/>               |                |
| <hr/>               |                |
| <hr/>               |                |
| <hr/>               |                |
| <hr/>               |                |
| <hr/>               |                |
| <hr/>               |                |
| <hr/>               |                |
| <hr/>               |                |
| <hr/>               |                |
| <hr/>               |                |
| <hr/>               |                |
| <hr/>               |                |
| <hr/>               |                |

