



# MAC™ 1200 Configuration Download Tool User Instructions

## Revision History

Each page of the document has the document part number and revision letter at the bottom of the page. The revision letter changes each time the document is updated.

Revision	Date	Comment
A	5 May 2006	Initial Release

## Introduction

The MAC 1200 Configuration Download Tool is a software application that allows you to create a MAC 1200 configuration on a desktop PC or laptop and then transfer that configuration to multiple MAC 1200 v6.11 units. This dramatically reduces both setup time and the chance of error.

To familiarize you with the configuration download tool, this document:

- Identifies the products compatible with the tool
- Lists prerequisites for use
- Provides usage notes
- Describes how to install the tool
- Describes how to save and load configurations
- Describes how to transfer configurations to a MAC 1200

## Compatible Products

The MAC 1200 Configuration Download Tool works only with the Pharma device model (6) of the MAC 1200 running v6.11 software.

## Prerequisites

To install and use the MAC 1200 Configuration Download Tool, you need the following:

- Laptop or Desktop PC with the following minimum requirements:
  - ◆ Windows 2000 or XP
  - ◆ 1 Ghz Processor Speed
  - ◆ 256 MB of RAM
  - ◆ 2 GB Hard Disk Space
  - ◆ Serial Port
- Serial cable (GE Part Number: 22336203)
- Familiarity with the MAC 1200 configuration settings

---

## Usage Notes

Before using the MAC 1200 Configuration Download tool, please review and be aware of the following usage notes:

- For security reasons, the MAC 1200 Configuration Download tool will not be allowed to disable High Security on a MAC 1200 unit. It will, however, be allowed to enable High Security.
- If any passwords are enabled, they are set to default **SYSTEM**.
- There are two ways to restore default settings:
  - ◆ Click the “Load Default Settings” button in the tool’s Control Panel.  
This restores to factory default all eight (8) setups, including the 3 operating modes (12 lead, 6 lead, and Arrhythmia).
  - ◆ Set the *Restore Defaults* flag on the System Setup tab to **YES**.  
This restores five (5) of the default setups ( System Setup, Pharma Setup, Communication Setup, High Security Setup, and Patient Setup) and excludes the three (3) operating modes (12 lead, 6 lead, and Arrhythmia).

The tool identifies which method was selected and displays different messages depending on user selection.

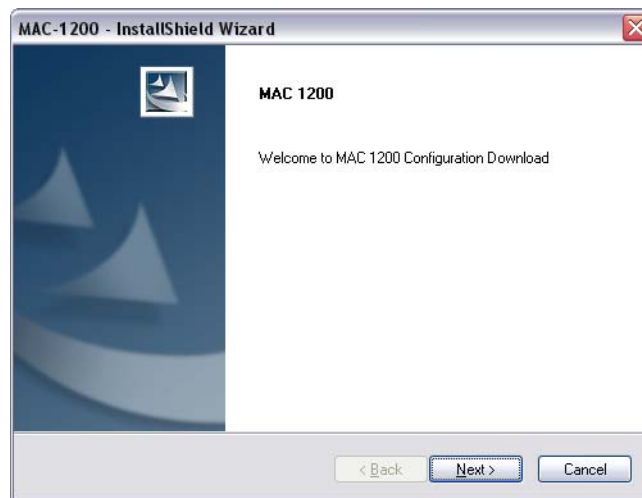
---

## Installation Instructions

To install the MAC 1200 Configuration Download Tool on your PC, use the following instructions:

1. Copy the installation file, *Setup MAC 1200 Configuration Download.exe*, from the installation CD to any directory on your PC.
2. Using Windows Explorer, navigate to the directory to which you copied the installation file.
3. Double-click the installation file.

The following window will open.



4. Click the Next> button.

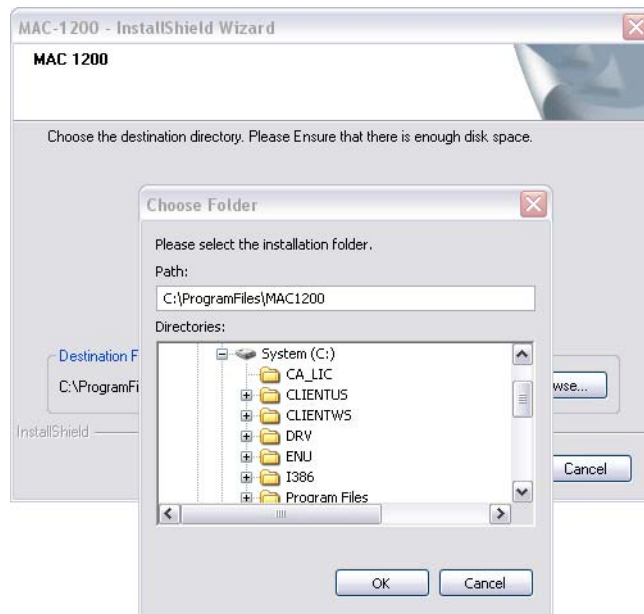
The following window will open to allow you to set the destination directory.



5. Do one of the following:
  - ◆ To modify the default installation directory, continue to step 6.
  - ◆ To accept the default installation directory, skip to step 8.

6. To change the installation directory, click the *Browse* button.

The *Choose Folder* window will open to allow you to select the destination directory.

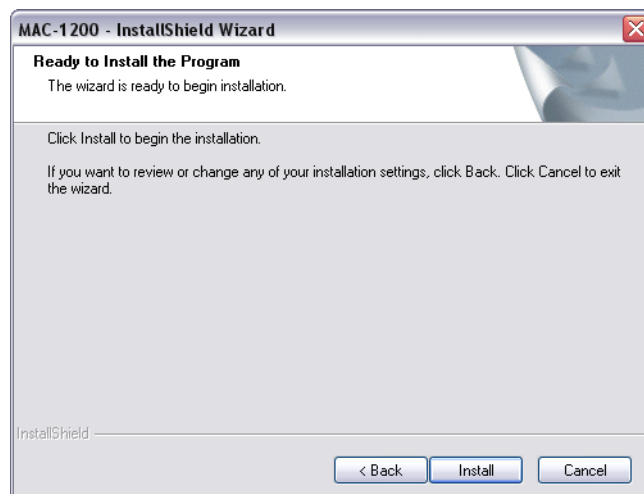


7. Navigate to the directory in which you wish to install the MAC 1200 Configuration Download Tool and click *OK*.

The *Choose Folder* window closes and you return to the InstallShield Wizard window.

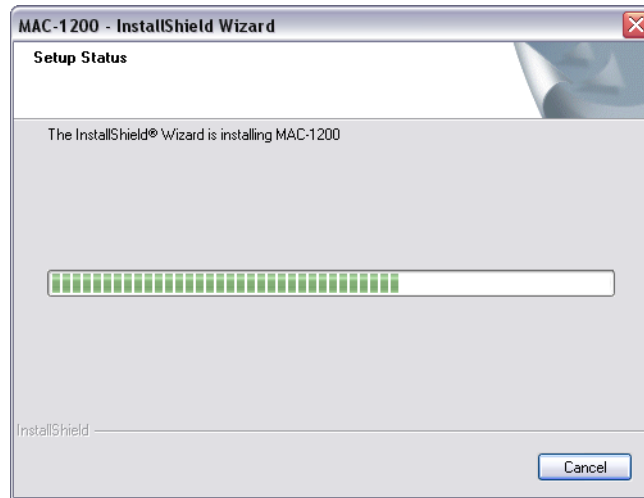
8. Click the *Next>* button.

The following window will open to allow you to begin the installation process.

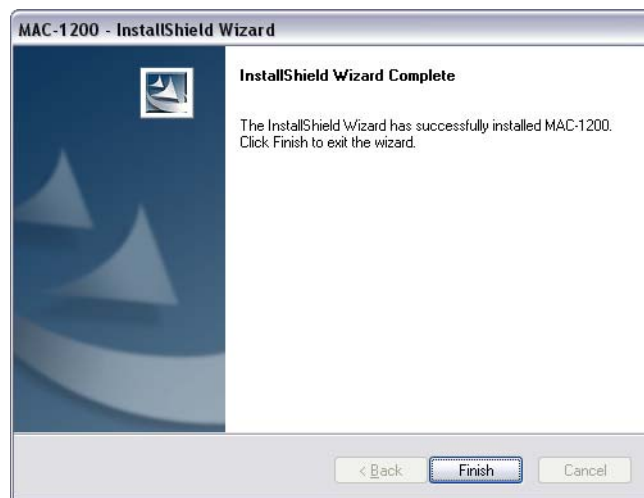


- 
9. Click the *Install* button to begin the installation process.

The following window will open to indicate the progress of the installation.



When the installation is complete, the following window will open.



10. Click the *Finish* button to close the InstallShield Wizard and return to your desktop.

The following shortcut was created on your desktop.



You are now ready to begin using the MAC 1200 Configuration Download tool.

---

## Configuration Save/Load Instructions

One of the advantages of the MAC 1200 Configuration Download Tool is the ability to save configurations for reuse. A saved configuration can be used to restore a MAC 1200 settings after a system failure, or it can be used as the starting point for creating the configuration at a new installation.

### NOTE

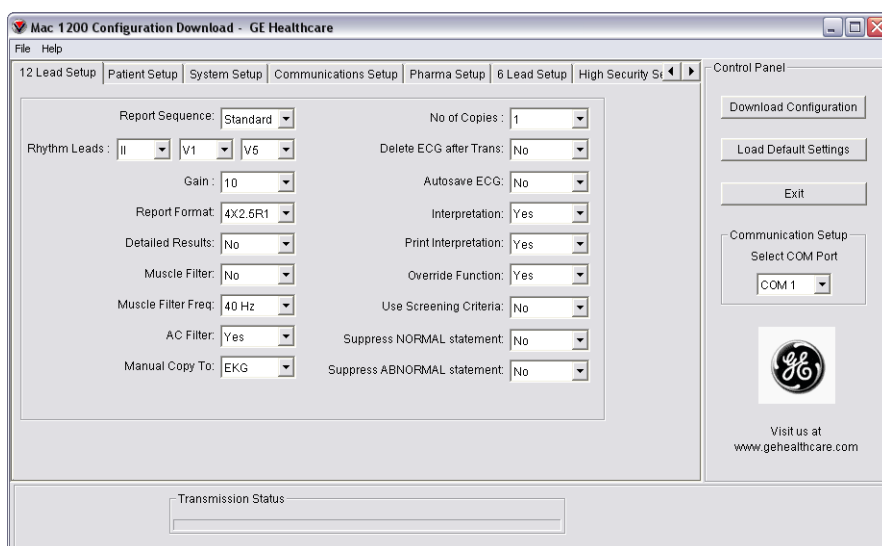
These instructions assume a basic understanding of the MAC 1200 Configuration settings. Therefore, they do not describe the configuration fields or their various interdependencies. If you are unfamiliar with these settings, refer to the *MAC 1200 Operator's Manual* (2012250-021) for details.

## Save Configuration

To save a configuration, use the following instructions.

1. Double-click the MAC 1200 Configuration Download shortcut on your Windows desktop.

The MAC 1200 Configuration Download tool opens with the default configuration loaded.

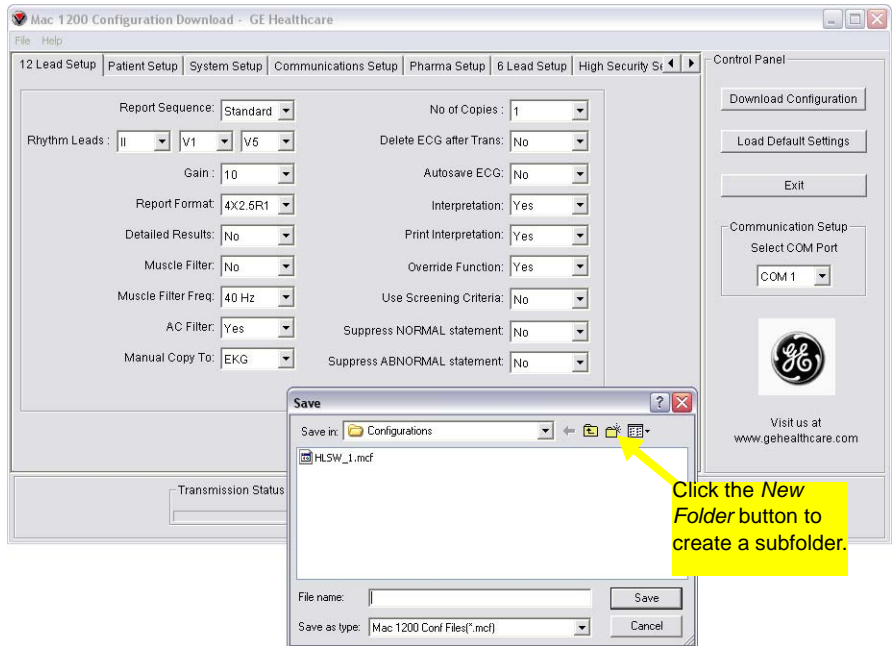


2. Adjust or modify the settings as needed.

Refer to the *MAC 1200 Operator's Manual* (2012250-021) for details.

3. When the configuration is acceptable, select *File > Save*.

The Save dialog box opens.



4. Navigate to the directory where the configuration is to be saved.

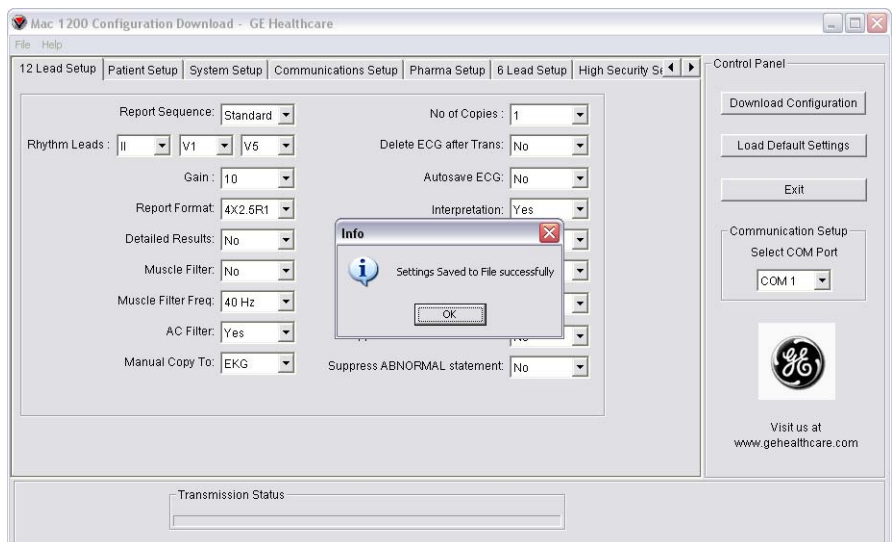
It is recommended that you save all your configurations in the same directory for easy access. If necessary, use the *New Folder* icon to create a new subfolder.

5. In the *File name* field, enter a descriptive name for the configuration file.

For example, if the configuration is for a specific customer, use the customer's name in the title, such as *St\_Jude\_Clinical\_Testing.mcf*.

6. Click *Save*.

A dialog box opens to indicate the configuration file was saved successfully.



7. Click *OK*.

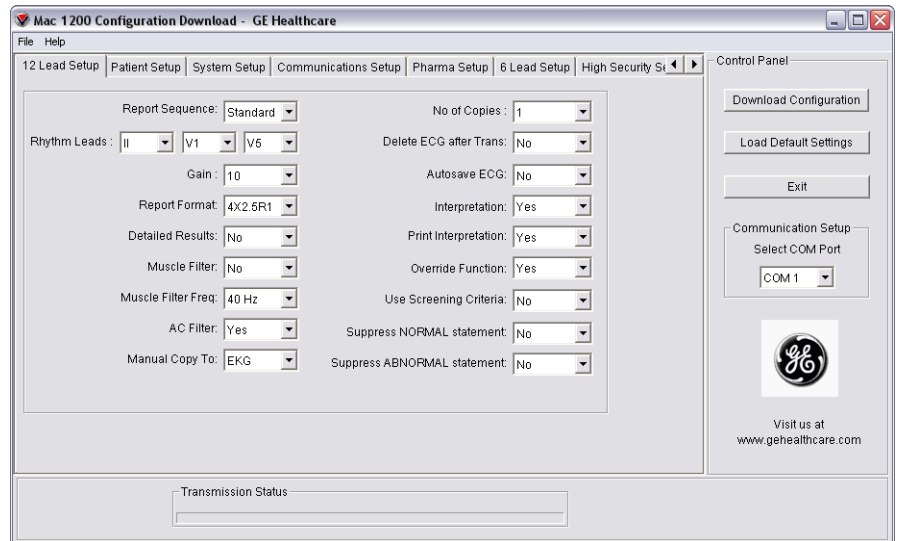
The dialog box closes and you return to the configuration tool. You can now close the configuration tool, transfer the configuration to a MAC 1200, or load a new configuration.

## Load Configuration

To load a configuration, use the following instructions.

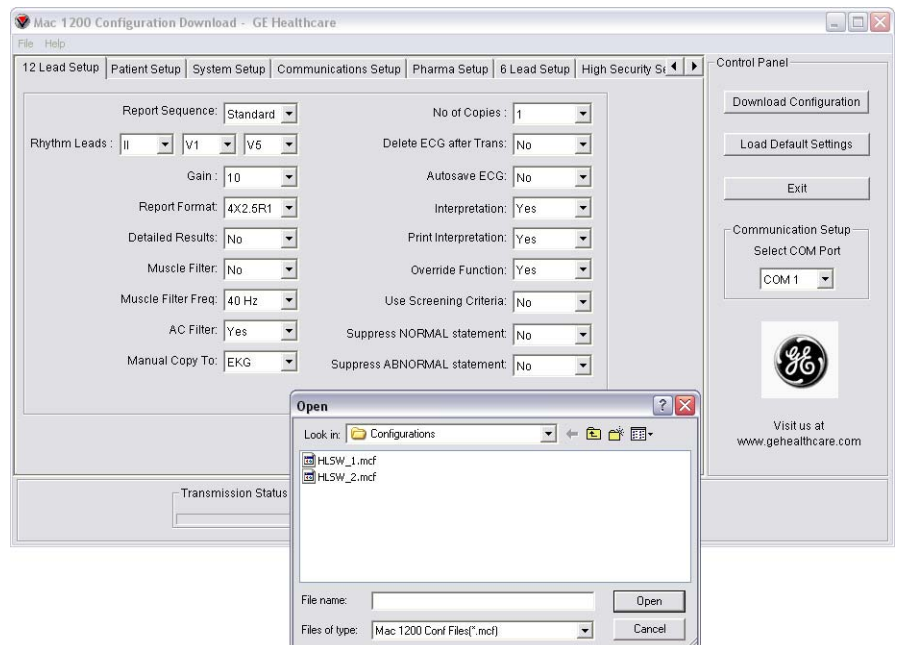
1. Double-click the MAC 1200 Configuration Download shortcut on your Windows desktop.

The MAC 1200 Configuration Download tool opens with the default configuration loaded.



2. Select *File > Open*.

The *Open* dialog box opens.

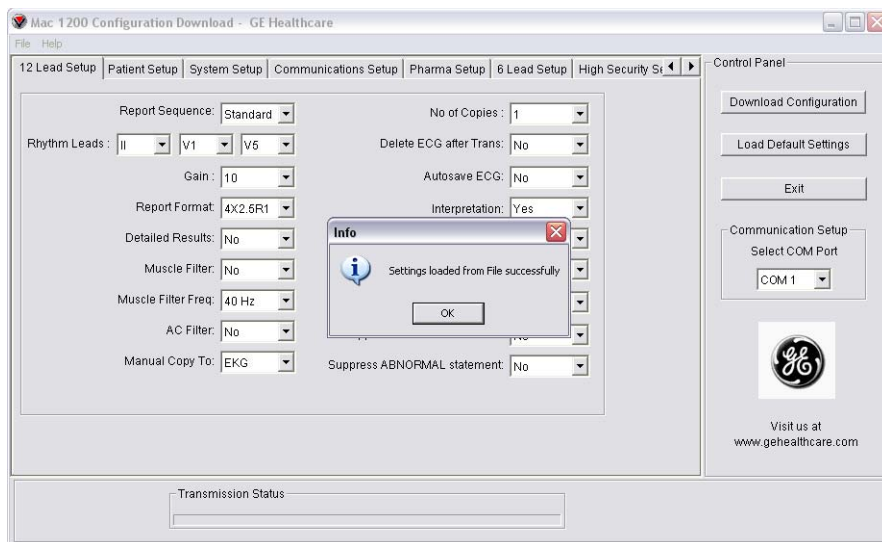


3. Navigate to the directory where your configuration file is stored.



4. Select the configuration file and click *Open*.

The configuration file is loaded and a confirmation dialog box opens.



5. Click *OK*.

The dialog box closes and you return to the configuration tool. You can now modify the configuration, transfer the configuration to a MAC 1200, or open a new configuration.

# Configuration Transfer Instructions

The following instructions explain how to transfer a configuration file from the MAC 1200 Configuration Download Tool to a MAC 1200.

**NOTE**

These instructions assume a basic understanding of the MAC 1200 Configuration settings. Therefore, they do not describe the configuration fields or their various interdependencies. If you are unfamiliar with these settings, refer to the *MAC 1200 Operator's Manual* (2012250-021) for details.

- 1. Verify the MAC 1200 is on and is running software version 6.11.

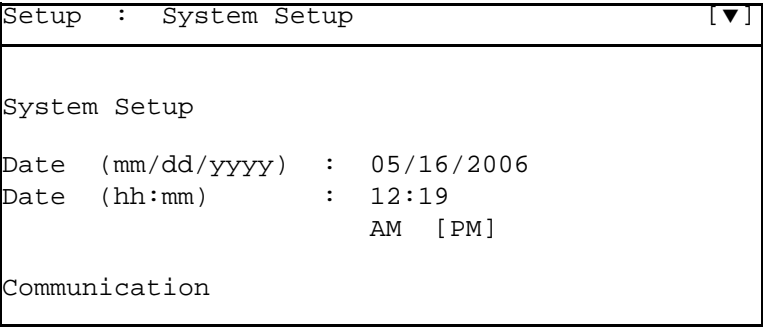
**CAUTION**

If the MAC 1200 is running any version other than 6.11, do not continue.

- 2. Turn on the PC containing the MAC 1200 Configuration Download Tool.
- 3. Connect the PC to the MAC 1200 using a serial cable.  
Use any available COM port.
- 4. Prepare the MAC 1200 to receive the configuration file using the following instructions:
  - a. Press the **SETUP** key to open the Setup Menu.

**NOTE**

If the **Enable Ease of Clock Setting** flag is set to **Yes** on the System Setup screen, the following screen appears instead of the Setup Menu.

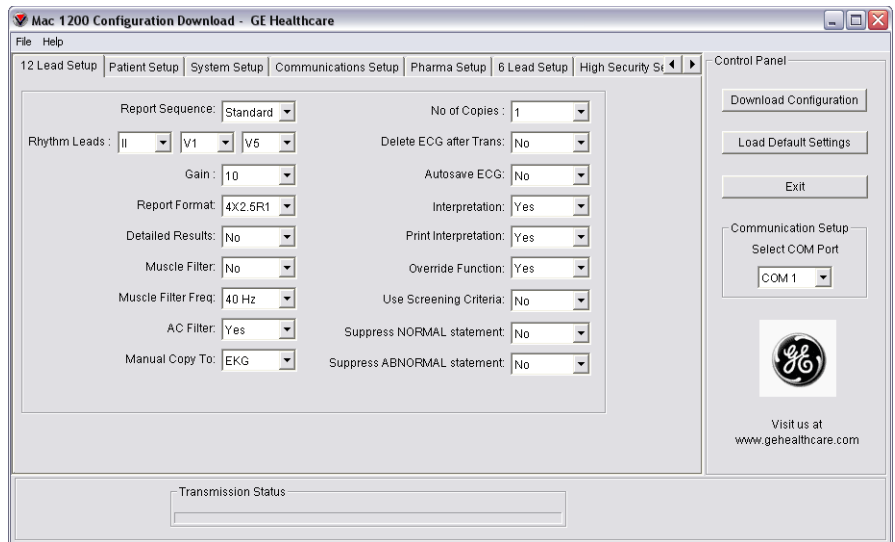


Press the **Start/Stop** key to close this window and open the Setup Menu.

- b. On the Setup Menu, press **ALT+SETUP** to enter the Configuration Download Mode.

5. On the laptop, run the MAC 1200 Configuration Download Tool.

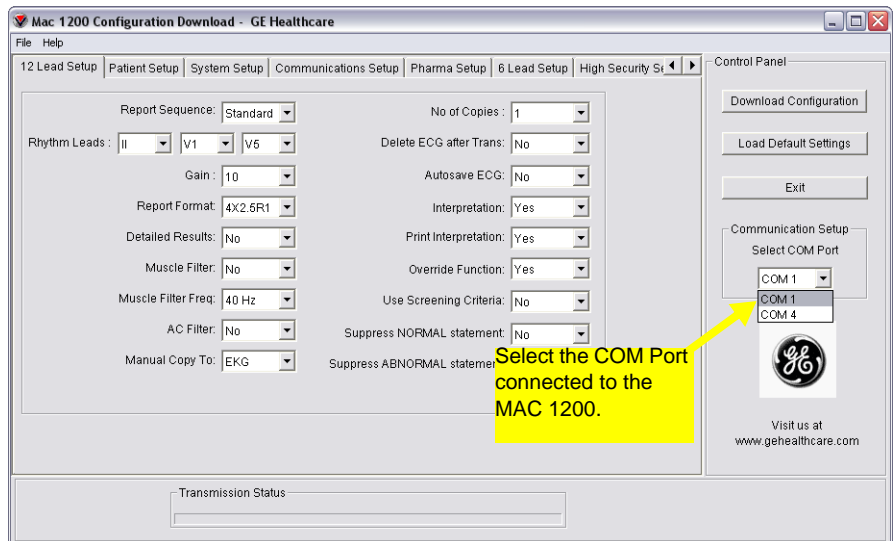
The configuration tool loads the default configuration.



6. Enter the required configuration as appropriate.

This can be done manually by modifying the default configuration, or it can be done by loading a configuration that was saved previously.

7. Under the Communications Setup, select the COM port that is connected to the MAC 1200.

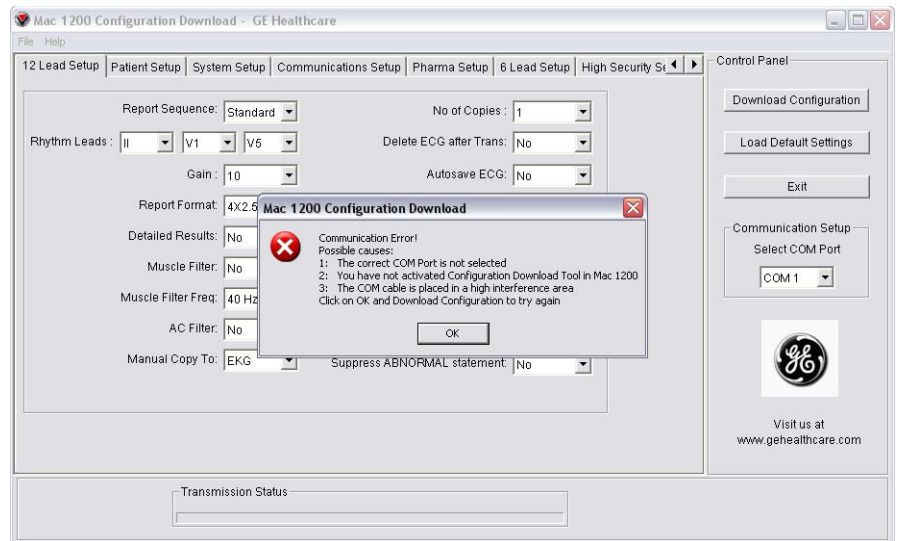


8. Click the *Download Configuration* button.

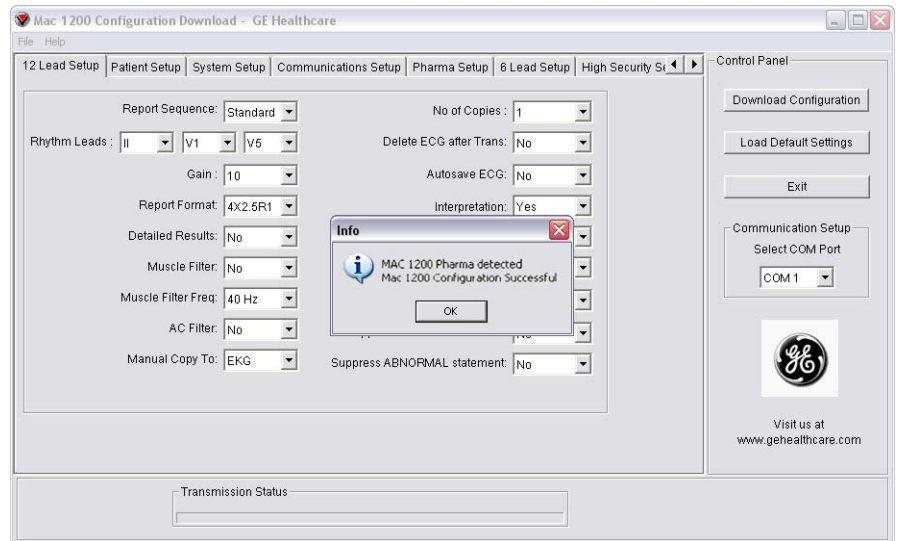
The configuration begins the download to the MAC 1200. The transfer progress is displayed in the progress bar at the bottom of the screen.

When the transfer is done, one of two dialog boxes opens, depending on whether the transfer was successful.

If the transfer was unsuccessful, the following dialog box displays. Continue to step 9.



When the transfer is successful, the following dialog box displays. Skip to step 12.



9. Click *OK*.

The *MAC 1200 Configuration Download* dialog box closes.

10. Verify the MAC 1200 is in Configuration Download Mode, the correct COM port is selected in the download tool, and there is no electronic interference.
11. After correcting any problems, repeat from step 8 until the transfer is successful.
12. Click *OK*.

The dialog box closes.

13. Disconnect the PC from the MAC 1200.
14. Repeat step 1 through step 13 for all remaining MAC 1200 units to be configured.