

# OPERATION & MAINTENANCE MANUAL

## Siderail, Assist Bar, and Headrail Upgrade Kits From Hill-Rom



**Product No. P9964/P9965/P9966**

**For Parts or Technical Assistance**  
**USA (800) 445-3720 Canada (800) 267-2337**  
**International: Contact your distributor.**

**man334**



# ***Siderail, Assist Bar, and Headrail Upgrade Kits Operation & Maintenance Manual***

---

## **Revisions**

<b>Revision Letter</b>	<b>Pages Affected</b>	<b>Date</b>
Original Issue		January, 2004

man334

© 2004 by Hill-Rom Services, Inc. ALL RIGHTS RESERVED.

No part of this text shall be reproduced or transmitted in any form or by any means, electronic or mechanical, including photocopying, recording, or by any information or retrieval system without written permission from Hill-Rom Services, Inc. (Hill-Rom).

The information in this manual is confidential and may not be disclosed to third parties without the prior written consent of Hill-Rom.

First Edition

First Printing 2004

Printed in the USA

Advance® is a registered trademark of Hill-Rom Services, Inc.

Advanta™ is a trademark of Hill-Rom Services, Inc.

Century+™ is a trademark of Hill-Rom Services, Inc.

COMposer® is a registered trademark of Hill-Rom Services, Inc.

EnhanceMate™ is a registered trademark of Hill-Rom Services, Inc.

Hill-Rom® is a registered trademark of Hill-Rom Services, Inc.

Nylok® is a registered trademark of Nylok Fasteners Corp.

Resident® is a registered trademark of Hill-Rom Services, Inc.

SideCom® is a registered trademark of Hill-Rom Services, Inc.

Siderail Cradle™ is a trademark of Hill-Rom Services, Inc.

Telemate™ is a trademark of Hill-Rom Services, Inc.

Torx® is a registered trademark of Textron, Inc.

The information contained in this manual is subject to change without notice. Hill-Rom makes no commitment to update or keep current, the information contained in this manual.

The only product warranty intended by Hill-Rom is the express, written warranty accompanying the bill of sale to the original purchaser. Hill-Rom makes no other warranty, express or implied, and in particular, makes no warranty of merchantability or fitness for a particular purpose.

Additional copies of this manual can be obtained from Hill-Rom.

To order additional copies of this manual, call 800-445-3720, and place a parts order for part number man334.

---

*Revisions*

**NOTES:**

---

# Chapter 1

## Parts List

---

### Chapter Contents

Purpose .....	1 - 5
Audience .....	1 - 5
Document Symbol Definition .....	1 - 6
Introduction .....	1 - 7
Overview .....	1 - 7
Siderail Upgrade Kit (P9964) .....	1 - 7
Assist Bar Upgrade Kit (P9965) .....	1 - 7
Headrail Upgrade Kit (P9966) .....	1 - 7
Bed Feature Changes .....	1 - 8
Operating Precautions .....	1 - 9
Patient Transfer and Unit Transport .....	1 - 9
Patient Positioning .....	1 - 9
Siderails and Mattress Assembly .....	1 - 10
Restraint Straps and Drainage Bag Hooks .....	1 - 12
Incompatible Accessories .....	1 - 13
Model Identification .....	1 - 14
Siderail Upgrade Kits .....	1 - 14
Assist Bar Upgrade Kits .....	1 - 19
Headrail Upgrade Kits .....	1 - 22
Safety Tips .....	1 - 25
Warning and Caution Labels .....	1 - 28
Cleaning .....	1 - 29
Steam Cleaning .....	1 - 29

Cleaning Hard to Clean Spots . . . . .	1 - 29
Disinfecting . . . . .	1 - 29
Warranty . . . . .	1 - 31
Service Parts Ordering . . . . .	1 - 33
Exchange Policy . . . . .	1 - 35
In-Warranty Exchanges . . . . .	1 - 35
Out-of-Warranty Exchanges . . . . .	1 - 35
Recommended Spare Parts . . . . .	1 - 36
Headboard Assembly—LTC . . . . .	1 - 37
Headboard Assembly—Advanta™ Bed . . . . .	1 - 38
Bayonet-Style Headboard Adapter . . . . .	1 - 39
Offset Bayonet-Style Headboard Adapter . . . . .	1 - 40
Post-Style Panel Locating Bracket . . . . .	1 - 42
Headrail Assembly—Advanta™ Bed . . . . .	1 - 44
Headrail Assembly—Advance® Series Bed and Advance® 2000 Bed . . . . .	1 - 46
Headrail Assembly—Parallelogram, without Assist Bar . . . . .	1 - 48
Headrail Assembly—Parallelogram, with Assist Bar . . . . .	1 - 52
Small Rectangular Headrail Assembly . . . . .	1 - 56
Large Rectangular Headrail Assembly . . . . .	1 - 58
Headrail Assembly—Resident® LTC Bed and Resident® Low Bed . . . . .	1 - 60
Footrail Assembly—Advanta™ Bed . . . . .	1 - 61
Footrail Assembly—Advance® Series Bed and Advance® 2000 Bed . . . . .	1 - 62
Footrail Assembly—Rectangular or Parallelogram Siderail . . . . .	1 - 63
Retracting Footrail Mounting Frame Assembly . . . . .	1 - 66
Non-Retracting Footrail Mounting Frame Assembly . . . . .	1 - 68
COMposer® Communication System Hardware— Advanta™ Bed, Advance® Series Bed, and Advance® 2000 Bed (Headrails Only) . . . . .	1 - 69



COMposer® Communication System Hardware—  
Advanta™ Bed, Advance® Series Bed, and Advance® 2000 Bed  
(Footrails Only). . . . . 1 - 70

Plate-Style Siderail Stop . . . . . 1 - 71

Headrail Stop Assembly . . . . . 1 - 72

Assist Bar Assembly . . . . . 1 - 74

CPR Relocation Assembly . . . . . 1 - 76

Drainage Bag Holder Disabler—Advanta™ Bed. . . . . 1 - 77

Mattress Stop . . . . . 1 - 78

Labels . . . . . 1 - 79

**NOTES:**

---

---

## Purpose

**WARNING:**

Keep this manual with the unit's existing service documentation. If part replacement becomes necessary, refer to this manual. Failure to do so could result in patient injury, personal injury, or equipment damage.

This manual provides operation and maintenance instructions for the Siderail, Assist Bar, and Headboard Upgrade Kits (P9964/P9965/P9966). This manual also provides parts lists for ordering replacement parts. **After installing the upgrade kits on the unit, keep this manual with the unit's existing service documentation.**

For information on installing the upgrade kits, refer to the [Siderail, Assist Bar, and Headrail Upgrade Kits Installation Instructions \(is794\)](#).

---

## Audience

This manual is intended for use by only facility-authorized personnel. Failure to observe this restriction can result in severe injury to people and serious damage to equipment.

---

## Document Symbol Definition

This manual contains different typefaces and icons designed to improve readability and increase understanding of its content. Note the following examples:

- Standard text—used for regular information.
- **Boldface text**—emphasizes a word or phrase.
- **NOTE:**—sets apart special information or important instruction clarification.
- The symbol below highlights a WARNING or CAUTION:

**Figure 1-1. Warning and Caution**



- A WARNING identifies situations or actions that may affect patient or user safety. Disregarding a warning could result in patient or user injury.
- A CAUTION points out special procedures or precautions that personnel must follow to avoid equipment damage.
- The symbol below highlights a CAUGHT HAZARD WARNING:

**Figure 1-2. Caught Hazard Warning**



- The symbol below highlights a CHEMICAL HAZARD WARNING:

**Figure 1-3. Chemical Hazard Warning**



- The symbol below highlights an ELECTRICAL SHOCK HAZARD WARNING:

**Figure 1-4. Electrical Shock Hazard Warning**



---

## Introduction

To help minimize the risk of patient entrapment and help improve patient safety, Hill-Rom has developed the following upgrade kits for beds from Hill-Rom with **clocking-type, half-length siderails**.

### Overview

#### **Siderail Upgrade Kit (P9964)**

The siderail upgrade kit provides an upgrade of the headrails, footrails, and headboard assemblies.

#### **Assist Bar Upgrade Kit (P9965)**

The assist bar upgrade kit provides an upgrade of the headrail and headboard assemblies and replaces the footrail assemblies with assist bar assemblies.

#### **Headrail Upgrade Kit (P9966)**

The headrail upgrade kit provides an upgrade of the headrail and headboard assemblies and removes the footrail assemblies.

---

## Bed Feature Changes

The installation of the upgrade kits changes the bed appearance significantly. Depending on the particular bed model, these changes may also affect bed features. Some changes that may occur include the following:

- Siderails will no longer lower and tuck below the sleep surface.
- The footrails mount on a frame below the sleep deck, **not** the foot section of the bed's sleep deck.
- The headboards are narrower, and the IV sockets are located **behind** the headboard.
- The opening between the headrail and the footrail or assist bar and between the headrail and the headboard may change significantly.
- On the Advanta™ Bed, the foot end drainage bag hooks are disabled.
- On the Advanta™ Bed, the brake and steer pedal is upgraded to permit access to the braking function.
- On the Advanta™ Bed, Advance® Series Bed, Advance® 2000 Bed, and Century+™ Bed, the CPR release handles are relocated to the head end corners of the head section. To access a relocated CPR release handle, fully raise or lower the headrail.
- When the headrail is lowered on the Centra Bed (P850/P852) and Century Series Bed (P835/P837) equipped with CPR, access to the CPR release handle may require reaching within the headrail.
- The door width must be at least 40 1/4" (102.24 cm) to accommodate the unit with the upgrade kits installed.

---

## Operating Precautions

### Patient Transfer and Unit Transport

**WARNING:**

Before transferring the patient to or from the bed, make sure the brakes are locked to prevent inadvertent movement. Failure to do so could result in patient injury or equipment damage.

**WARNING:**

After the installation of the upgrade kits, siderails no longer tuck below the sleep surface, affecting the overall width of the bed. Consider the increased bed width and any associated interferences during transport and patient transfers. Failure to do so could result in patient injury or equipment damage.

When transferring the patient to or from another bed, the siderails may cause a gap between the beds. Make sure the patient and patient lines completely clear the gap between the beds.

### Patient Positioning

**WARNING:**

Before positioning the patient in the bed, make sure the brakes are locked to prevent inadvertent movement. Failure to do so could result in patient injury or equipment damage.

**WARNING:**

During patient positioning, make sure the patient and/or his or her limbs do not extend outside of the mattress perimeter. Patient injury could occur.

**WARNING:**

When raising the knee section above the automatic contour position, make sure the patient's limbs do not extend outside the perimeter of the mattress. Failure to do so could result in patient injury.

When raising the knee section above the automatic contour position, make sure the patient's limbs do **not** extend outside the perimeter of the mattress.

**NOTE:**

Special observation is required when using therapy mattress or mattress overlay assemblies.



**WARNING:**

For patients requiring raised footrails, limit or lockout the elevation of the knee section. Failure to do so could result in patient injury or equipment damage.

During patient positioning, make sure the patient does not roll out of the unit between the headrail and assist bar.

## Siderails and Mattress Assembly



**WARNING:**

Evaluate patients for entrapment risk according to facility protocol, and monitor patients frequently.



**WARNING:**

Evaluate patients for entrapment risk according to facility protocol, and monitor patients frequently. Ensure that all siderails are fully latched when in the raised position. Failure to do either of these could result in serious injury or death.

**NOTE:**

Siderails are intended to be a reminder to the patient of the unit's edges, not a patient-restraining device. When appropriate, Hill-Rom recommends that medical personnel determine the proper methods necessary to ensure a patient remains safely in bed.

**NOTE:**

When a patient's condition (such as disorientation due to medication or clinical condition) could lead to patient entrapment, the mattress support platform should be left in the flat position and lowest position when unattended, except when required otherwise by medical staff for special or particular circumstances.



**WARNING:**

Closely watch the six potential zones of entrapment for patient entrapment, and make sure the zones are correctly sized to help prevent entrapment. Failure to do so could result in patient injury.

Closely watch the following six zones for patient entrapment:

- **Zone 1**—Between the top of the compressed mattress and bottom of the end of the headrail, Zone 1 should be small enough to prevent neck entrapment.
- **Zone 2**—Between the top of the compressed mattress and the bottom of the headrail between the arms, Zone 2 should be small enough to prevent neck entrapment.
- **Zone 3**—The openings within the siderail, Zone 3 should be small enough to prevent the patient's head from going through the siderail.
- **Zone 4**—Between the side of the mattress and the inside of the siderail, Zone 4 should be small enough to restrict entrapment of the head.
- **Zone 5**—Between split siderails, Zone 5 should be small enough to prevent neck entrapment.
- **Zone 6**—Between the end of a siderail and the headboard or footboard, Zone 6 should provide a large enough space at the foot end of the bed for the patient to get in or out of the bed without causing the siderails to act as a restraint.

**WARNING:**

Once the upgrade kits are installed, make sure the siderails and Nurse Call functions operate correctly. Failure to do so could result in patient injury or equipment damage.

Once the upgrade kits are installed, make sure the siderails and Nurse Call functions operate correctly. For information on installing the upgrade kits, refer to the [\*Siderail, Assist Bar, and Headrail Upgrade Kits Installation Instructions \(is794\)\*](#).

**WARNING:**

With the use of thicker therapy surfaces, it is possible to have reduced footrail coverage for the patient. Use care when using therapy surfaces. Failure to do so could result in patient injury.

Only mattresses from Hill-Rom listed in table 1-1 on page 1-12 have been tested for entrapment with the upgrade kits. Any mattress not listed should be evaluated before use with the upgrade kits.

**Table 1-1. Qualifying Mattress Model Numbers**

Model #	Model #	Model #	Model #	Model #	Model #
P708	P713	P944	P564	P733	P1412
P709	P576	P560	P565	P914	P1414
P710	P577	P561	P730	P923	P1416
P711	P578	P562	P731	P938	
P712	P943	P563	P732	P1410	

## Restraint Straps and Drainage Bag Hooks

**WARNING:**

Do **not** attach restraint straps under or around the footrail mounting frame assemblies. Patient injury or equipment damage could occur.

**CAUTION:**

Once the footrail upgrade kits are installed on an Advanta™ Bed, do **not** hang patient drainage bags from the drainage bag hooks on the foot section. Patient drainage bags hanging on the foot section could become entangled with the footrail and its components. Patient drainage bag damage could occur.

**CAUTION:**

Make sure patient drainage bags suspended from the footrail mounting frame do **not** touch the floor as the bed is lowered. Equipment damage could occur.

## Incompatible Accessories



### WARNING:

Do **not** use incompatible accessories with the upgrade kits. Patient injury, personal injury, or equipment damage could occur.

The following general accessories from Hill-Rom **cannot** be used with the upgrade kits:

- Siderail pads
- Full-length siderails
- ¾-length siderails
- IV poles in seat section mounting sockets

Some additional accessories from Hill-Rom **cannot** be used with the upgrade kits. For specific accessories from Hill-Rom that cannot be used once the upgrade kits are installed, see table 1-2 on page 1-13.

**Table 1-2. Incompatible Accessories List**

Product Number	Description
P865A	Ambulatory assist bar (for use with the Resident® LTC Bed (P870) or Resident® Low Bed (P872))
P995301	Headboard extension with half-length rails
P2221	Permanent IV pole
P9927	Siderail extender
P9925	Siderail extender, with SideCom® Communication System
P9926	Siderail extender, without SideCom® Communication System
P992601	Siderail extender, without SideCom® Communication System
P5020	EnhanceMate™ Voice Activated Control System (for use with the Advance® Series Bed and Advance® 2000 Bed)
P863AE	Siderail Cradle™ System
P395A/B	Telemate™ Phone

## Model Identification

### Siderail Upgrade Kits

For Siderail Upgrade Kit (SRUK) (P9964) model identification, see table 1-3 on page 1-14.

**Table 1-3. Siderail Upgrade Kit (P9964) Model Identification**

Model Number	Description
P996401	Light neutral (for use with a 425 Bed (P425/P426) with parallelogram siderails with inserts)
P996402	Light neutral (for use with a 425 Bed (P425/P426) with parallelogram siderails without inserts)
P996403	Taupe (for use with a 425 Bed (P425/P426) with parallelogram siderails with inserts)
P996404	Taupe (for use with a 425 Bed (P425/P426) with parallelogram siderails without inserts)
P996405	Taupe (for use with a 425 Bed (P425/P426) with rectangular siderails with inserts)
P996406	Taupe (for use with a 425 Bed (P425/P426) with rectangular siderails without inserts)
P996407	Taupe (for use with a 715 Bed (P715/P718), 720 Bed (P720/P723), 815 Bed (P815), 820 Bed (P820/P822), or Century Series Bed (P835/P837) with rectangular siderails with inserts and communication)
P996408	Taupe (for use with a 715 Bed (P715/P718), 720 Bed (P720/P723), 815 Bed (P815), 820 Bed (P820/P822), or Century Series Bed (P835/P837) with rectangular siderails without inserts, with communication)
P996409	Taupe (for use with a 715 Bed (P715/P718), 720 Bed (P720/P723), 815 Bed (P815), 820 Bed (P820/P822), or Century Series Bed (P835/P837) with rectangular siderails with inserts, without communication)

Model Number	Description
P996410	Taupe (for use with a 715 Bed (P715/P718), 720 Bed (P720/P723), 815 Bed (P815), 820 Bed (P820/P822), or Century Series Bed (P835/P837) with rectangular siderails without inserts or communication)
P996411	Light neutral (for use with a Century Series Bed (P835/P837) or Patient Care Bed (P8200/P8350) with parallelogram siderails with inserts)
P996412	Light neutral (for use with a Century Series Bed (P835/P837) or Patient Care Bed (P8200/P8350) with parallelogram siderails without inserts, with communication)
P996413	Light neutral (for use with a Century Series Bed (P835/P837) or Patient Care Bed (P8200/P8350) with parallelogram siderails without inserts or communication)
P996414	Taupe (for use with a Century Series Bed (P835/P837) or Patient Care Bed (P8200/P8350) with parallelogram siderails with inserts)
P996415	Taupe (for use with a Century Series Bed (P835/P837) or Patient Care Bed (P8200/P8350) with parallelogram siderails without inserts, with communication)
P996416	Taupe (for use with a Century Series Bed (P835/P837) or Patient Care Bed (P8200/P8350) with parallelogram siderails without inserts or communication)
P996417	Taupe (for use with a 840 Bed (P840/P842) with rectangular siderails with inserts and communication)
P996418	Taupe (for use with a 840 Bed (P840/P842) with rectangular siderails without inserts, with communication)
P996419	Taupe (for use with a 840 Bed (P840/P842) with rectangular siderails with inserts, without communication)
P996420	Taupe (for use with a 840 Bed (P840/P842) with rectangular siderails without inserts or communication)

Model Number	Description
P996421	Light neutral (for use with a Centra Bed (P850/P852) or Retractable Bed (P8500) with parallelogram siderails with inserts)
P996422	Light neutral (for use with a Centra Bed (P850/P852) or Retractable Bed (P8500) with parallelogram siderails without inserts, with communication)
P996423	Light neutral (for use with a Centra Bed (P850/P852) or Retractable Bed (P8500) with parallelogram siderails without inserts or communication)
P996424	Taupe (for use with a Centra Bed (P850/P852) or Retractable Bed (P8500) with parallelogram siderails with inserts)
P996425	Taupe (for use with a Centra Bed (P850/P852) or Retractable Bed (P8500) with parallelogram siderails without inserts, with communication)
P996426	Taupe (for use with a Centra Bed (P850/P852) or Retractable Bed (P8500) with parallelogram siderails without inserts or communication)
P996427	Taupe (for use with a Centra Bed (P850/P852) with rectangular siderails with inserts and communication)
P996428	Taupe (for use with a Centra Bed (P850/P852) with rectangular siderails without inserts, with communication)
P996429	Taupe (for use with a Centra Bed (P850/P852) with rectangular siderails with inserts, without communication)
P996430	Taupe (for use with a taupe Centra Bed (P850/P852) with rectangular siderails without inserts or communication)
P996431	Light neutral (for use with a Centra II Bed (P1050/P1052/P1060/P1062/P1063/P1064) with parallelogram siderails with inserts)
P996432	Light neutral (for use with a Centra II Bed (P1050/P1052/P1060/P1062/P1063/P1064) with parallelogram siderails without inserts, with communication)

Model Number	Description
P996433	Light neutral (for use with a Centra II Bed (P1050/P1052/P1060/P1062/P1063/P1064) with parallelogram siderails without inserts or communication)
P996434	Taupe (for use with a Centra II Bed (P1050/P1052/P1060/P1062/P1063/P1064) with parallelogram siderails with inserts)
P996435	Taupe (for use with a Centra II Bed (P1050/P1052/P1060/P1062/P1063/P1064) with parallelogram siderails without inserts, with communication)
P996436	Taupe (for use with a Centra II Bed (P1050/P1052/P1060/P1062/P1063/P1064) with parallelogram siderails without inserts or communication)
P996437	Light neutral (for use with a three-motor Advance® 2000 Bed (P1100/P1110/P1120/P1130/P1140) with parallelogram siderails with inserts)
P996438	Light neutral (for use with a three-motor Advance® 2000 Bed (P1100/P1110/P1120/P1130/P1140) with parallelogram siderails without inserts)
P996439	Light neutral (for use with a four-motor Advance® Series Bed (P1103/P1104/P1105/P1106/P1115/P1116/P1135/P1136/P1145/P1146/P1155/P1165) with parallelogram siderails with inserts)
P996440	Light neutral (for use with a four-motor Advance® Series Bed (P1103/P1104/P1105/P1106/P1115/P1116/P1135/P1136/P1145/P1146/P1155/P1165) with parallelogram siderails without inserts)
P996441	Light neutral (for use with a Century+™ Bed (P1400) with parallelogram siderails)
P996442	Taupe (for use with a Century+™ Bed (P1400) with parallelogram siderails)
P996443	Light neutral (for use with a Advanta™ Bed (P1600/P1603/P1604) with parallelogram siderails)
P996444	Light neutral (for use with a Retractable Bed (P8400) with parallelogram siderails with inserts)

<b>Model Number</b>	<b>Description</b>
P996445	Light neutral (for use with a Retractable Bed (P8400) with parallelogram siderails without inserts, with communication)
P996446	Light neutral (for use with a Retractable Bed (P8400) with parallelogram siderails without inserts or communication)
P996447	Taupe (for use with a Retractable Bed (P8400) with parallelogram siderails with inserts)
P996448	Taupe (for use with a Retractable Bed (P8400) with parallelogram siderails without inserts, with communication)
P996449	Taupe (for use with a Retractable Bed (P8400) with parallelogram siderails without inserts or communication)



## Assist Bar Upgrade Kits

For Assist Bar Upgrade Kit (ABUK) (P9965) model identification, see table 1-4 on page 1-19.

**Table 1-4. Assist Bar Upgrade Kit (P9965) Model Identification**

Model Number	Description
P996501	Light neutral (for use with a 425 Bed (P425/P426) with parallelogram siderails with inserts)
P996502	Light neutral (for use with a 425 Bed (P425/P426) with parallelogram siderails without inserts)
P996503	Taupe (for use with a 425 Bed (P425/P426) with parallelogram siderails with inserts)
P996504	Taupe (for use with a 425 Bed (P425/P426) with parallelogram siderails without inserts)
P996505	Light neutral (for use with a Century Series Bed (P835/P837), Centra Bed (P850/P852), Patient Care Bed (P8200/P8350), or Retractable Bed (P8500) with parallelogram siderails with inserts)
P996506	Light neutral (for use with a Century Series Bed (P835/P837), Centra Bed (P850/P852), Patient Care Bed (P8200/P8350), or Retractable Bed (P8500) with parallelogram siderails without inserts, with communication)
P996507	Light neutral (for use with a Century Series Bed (P835/P837), Centra Bed (P850/P852), Patient Care Bed (P8200/P8350), or Retractable Bed (P8500) with parallelogram siderails without inserts or communication)
P996508	Taupe (for use with a Century Series Bed (P835/P837), Centra Bed (P850/P852), Patient Care Bed (P8200/P8350), or Retractable Bed (P8500) with parallelogram siderails with inserts)
P996509	Taupe (for use with a Century Series Bed (P835/P837), Centra Bed (P850/P852), Patient Care Bed (P8200/P8350), or Retractable Bed (P8500) with parallelogram siderails without inserts, with communication)

Model Number	Description
P996510	Taupe (for use with a Century Series Bed (P835/P837), Centra Bed (P850/P852), Patient Care Bed (P8200/P8350), or Retractable Bed (P8500) with parallelogram siderails without inserts or communication)
P996511	Taupe (for use with a 76" (193 cm) Resident® LTC Bed (P870))
P996512	Taupe (for use with a 80" (203 cm) Resident® LTC Bed (P870))
P996513	Taupe (for use with a Resident® Low Bed (P872))
P996514	Light neutral (for use with a Centra II Bed (P1050/P1052/P1060/P1062/P1063/P1064) with parallelogram siderails with inserts)
P996515	Light neutral (for use with a Centra II Bed (P1050/P1052/P1060/P1062/P1063/P1064) with parallelogram siderails without inserts, with communication)
P996516	Light neutral (for use with a Centra II Bed (P1050/P1052/P1060/P1062/P1063/P1064) with parallelogram siderails without inserts or communication)
P996517	Taupe (for use with a Centra II Bed (P1050/P1052/P1060/P1062/P1063/P1064) with parallelogram siderails with inserts)
P996518	Taupe (for use with a Centra II Bed (P1050/P1052/P1060/P1062/P1063/P1064) with parallelogram siderails without inserts, with communication)
P996519	Taupe (for use with a Centra II Bed (P1050/P1052/P1060/P1062/P1063/P1064) with parallelogram siderails without inserts or communication)
P996520	Light neutral (for use with a Century+™ Bed (P1400) with parallelogram siderails)
P996521	Taupe (for use with a Century+™ Bed (P1400) with parallelogram siderails)
P996522	Light neutral (for use with a Retractable Bed (P8400) with parallelogram siderails with inserts)
P996523	Light neutral (for use with a Retractable Bed (P8400) with parallelogram siderails with inserts, without communication)

Model Number	Description
P996524	Light neutral (for use with a Retractable Bed (P8400) with parallelogram siderails without inserts or communication)
P996525	Taupe (for use with a Retractable Bed (P8400) with parallelogram siderails with inserts)
P996526	Taupe (for use with a Retractable Bed (P8400) with parallelogram siderails with inserts, without communication)
P996527	Taupe (for use with a Retractable Bed (P8400) with parallelogram siderails without inserts or communication)

## Headrail Upgrade Kits

For Headrail Upgrade Kit (HRUK) (P9966) model identification, see table 1-5 on page 1-22.

**Table 1-5. Headrail Upgrade Kit (P9966) Model Identification**

<b>Model Number</b>	<b>Description</b>
P996601	Light neutral (for use with a 425 Bed (P425/P426) with parallelogram siderails with inserts)
P996602	Light neutral (for use with a 425 Bed (P425/P426) with parallelogram siderails without inserts)
P996603	Taupe (for use with a 425 Bed (P425/P426) with parallelogram siderails with inserts)
P996604	Taupe (for use with a 425 Bed (P425/P426) with parallelogram siderails without inserts)
P996605	Light neutral (for use with a Century Series Bed (P835/P837), Centra Bed (P850/P852), Patient Care Bed (P8200/P8350), or Retractable Bed (P8500) with parallelogram siderails with inserts)
P996606	Light neutral (for use with a Century Series Bed (P835/P837), Centra Bed (P850/P852), Patient Care Bed (P8200/P8350), or Retractable Bed (P8500) with parallelogram siderails without inserts, with communication)
P996607	Light neutral (for use with a Century Series Bed (P835/P837), Centra Bed (P850/P852), Patient Care Bed (P8200/P8350), or Retractable Bed (P8500) with parallelogram siderails without inserts or communication)
P996608	Taupe (for use with a Century Series Bed (P835/P837), Centra Bed (P850/P852), Patient Care Bed (P8200/P8350), or Retractable Bed (P8500) with parallelogram siderails with inserts)
P996609	Taupe (for use with a Century Series Bed (P835/P837), Centra Bed (P850/P852), Patient Care Bed (P8200/P8350), or Retractable Bed (P8500) with parallelogram siderails without inserts, with communication)

Model Number	Description
P996610	Taupe (for use with a Century Series Bed (P835/P837), Centra Bed (P850/P852), Patient Care Bed (P8200/P8350), or Retractable Bed (P8500) with parallelogram siderails without inserts or communication)
P996611	Taupe (for use with a 76" (193 cm) Resident® LTC Bed (P870))
P996612	Taupe (for use with a 80" (203 cm) Resident® LTC Bed (P870))
P996613	Taupe (for use with a Resident® Low Bed (P872))
P996614	Light neutral (for use with a Centra II Bed (P1050/P1052/P1060/P1062/P1063/P1064) with parallelogram siderails with inserts)
P996615	Light neutral (for use with a Centra II Bed (P1050/P1052/P1060/P1062/P1063/P1064) with parallelogram siderails without inserts, with communication)
P996616	Light neutral (for use with a Centra II Bed (P1050/P1052/P1060/P1062/P1063/P1064) with parallelogram siderails without inserts or communication)
P996617	Taupe (for use with a Centra II Bed (P1050/P1052/P1060/P1062/P1063/P1064) with parallelogram siderails with inserts)
P996618	Taupe (for use with a Centra II Bed (P1050/P1052/P1060/P1062/P1063/P1064) with parallelogram siderails without inserts, with communication)
P996619	Taupe (for use with a Centra II Bed (P1050/P1052/P1060/P1062/P1063/P1064) with parallelogram siderails without inserts or communication)
P996620	Light neutral (for use with a Century+™ Bed (P1400) with parallelogram siderails)
P996621	Taupe (for use with a Century+™ Bed (P1400) with parallelogram siderails)
P996622	Light neutral (for use with a Retractable Bed (P8400) with parallelogram siderails with inserts)
P996623	Light neutral (for use with a Retractable Bed (P8400) with parallelogram siderails with inserts, without communication)

Model Number	Description
P996624	Light neutral (for use with a Retractable Bed (P8400) with parallelogram siderails without inserts or communication)
P996625	Taupe (for use with a Retractable Bed (P8400) with parallelogram siderails with inserts)
P996626	Taupe (for use with a Retractable Bed (P8400) with parallelogram siderails with inserts, without communication)
P996627	Taupe (for use with a Retractable Bed (P8400) with parallelogram siderails without inserts or communication)

---

## Safety Tips

**WARNING:**

Keep this manual with the unit's existing service documentation. If part replacement becomes necessary, refer to this manual. Failure to do so could result in patient injury, personal injury, or equipment damage.

**WARNING:**

Before transferring the patient to or from the bed, make sure the brakes are locked to prevent inadvertent movement. Failure to do so could result in patient injury or equipment damage.

**WARNING:**

After the installation of the upgrade kits, siderails no longer tuck below the sleep surface, affecting the overall width of the bed. Consider the increased bed width and any associated interferences during transport and patient transfers. Failure to do so could result in patient injury or equipment damage.

**WARNING:**

Before positioning the patient in the bed, make sure the brakes are locked to prevent inadvertent movement. Failure to do so could result in patient injury or equipment damage.

**WARNING:**

During patient positioning, make sure the patient and/or his or her limbs do not extend outside of the mattress perimeter. Patient injury could occur.

**WARNING:**

When raising the knee section above the automatic contour position, make sure the patient's limbs do not extend outside the perimeter of the mattress. Failure to do so could result in patient injury.

**NOTE:**

Special observation is required when using therapy mattress or mattress overlay assemblies.



**WARNING:**

For patients requiring raised footrails, limit or lockout the elevation of the knee section. Failure to do so could result in patient injury or equipment damage.



**WARNING:**

Evaluate patients for entrapment risk according to facility protocol, and monitor patients frequently.



**WARNING:**

Evaluate patients for entrapment risk according to facility protocol, and monitor patients frequently. Ensure that all siderails are fully latched when in the raised position. Failure to do either of these could result in serious injury or death.

**NOTE:**

Siderails are intended to be a reminder to the patient of the unit's edges, not a patient-restraining device. When appropriate, Hill-Rom recommends that medical personnel determine the proper methods necessary to ensure a patient remains safely in bed.

**NOTE:**

When a patient's condition (such as disorientation due to medication or clinical condition) could lead to patient entrapment, the mattress support platform should be left in the flat position and lowest position when unattended, except when required otherwise by medical staff for special or particular circumstances.



**WARNING:**

Closely watch the six potential zones of entrapment for patient entrapment, and make sure the zones are correctly sized to help prevent entrapment. Failure to do so could result in patient injury.



**WARNING:**

Once the upgrade kits are installed, make sure the siderails and Nurse Call functions operate correctly. Failure to do so could result in patient injury or equipment damage.



**WARNING:**

With the use of thicker therapy surfaces, it is possible to have reduced footrail coverage for the patient. Use care when using therapy surfaces. Failure to do so could result in patient injury.

**WARNING:**

Do **not** attach restraint straps under or around the footrail mounting frame assemblies. Patient injury or equipment damage could occur.

**WARNING:**

Follow the product manufacturer's instructions. Failure to do so could result in personal injury or equipment damage.

**WARNING:**

Do not expose the unit to excessive moisture that would allow for liquid pooling. Personal injury or equipment damage could occur.

**CAUTION:**

Once the footrail upgrade kits are installed on an Advanta™ Bed, do **not** hang patient drainage bags from the drainage bag hooks on the foot section. Patient drainage bags hanging on the foot section could become entangled with the footrail and its components. Patient drainage bag damage could occur.

**CAUTION:**

Make sure patient drainage bags suspended from the footrail mounting frame do **not** touch the floor as the bed is lowered. Equipment damage could occur.

**CAUTION:**

Do not use harsh cleansers/detergents, such as scouring pads and heavy duty grease removers, or solvents such as toluene, xylene, and acetone. Equipment damage could occur.

---

## Warning and Caution Labels

Figure 1-5. Warning and Caution Labels



m334\_032

---

## Cleaning

**WARNING:**

Follow the product manufacturer's instructions. Failure to do so could result in personal injury or equipment damage.

**WARNING:**

Do not expose the unit to excessive moisture that would allow for liquid pooling. Personal injury or equipment damage could occur.

**CAUTION:**

Do not use harsh cleansers/detergents, such as scouring pads and heavy duty grease removers, or solvents such as toluene, xylene, and acetone. Equipment damage could occur.

If there is no visible soilage with possible body fluids, we recommend that you clean the unit with a mild detergent and warm water. If disinfection is desired, you may use a combination cleanser/disinfectant as explained in “Disinfecting” on page 1-29.

## Steam Cleaning

Do not use any steam cleaning device on the unit. Excessive moisture can damage mechanisms in this unit.

## Cleaning Hard to Clean Spots

To remove difficult spots or stains, we recommend that you use standard household cleansers and a soft-bristled brush. To loosen heavy, dried-on soil, you may first need to saturate the spot.

## Disinfecting

When there is visible soilage and between patients, we recommend that you disinfect the unit with a tuberculocidal disinfectant. (For customers in the US, the disinfectant should be registered with the Environmental Protection Agency.)

Dilute and use the disinfectant according to the manufacturer's instructions.

**NOTES:**

---

**Warranty**

## **HILL-ROM COMPANY, INC. LIMITED WARRANTY**

Hill-Rom Company, Inc. (Hill-Rom) has a long tradition of providing superior products and service to our customers. Our goal is "Total Customer Satisfaction". In that spirit, Hill-Rom is proud to offer the following warranty.

**GENERAL WARRANTY (APPLICABLE UNLESS A SPECIFIC WARRANTY IS LISTED)**

Hill-Rom warrants to the original purchaser that its products and replacement parts shall be free from defects in material and workmanship for a period of one (1) year from date of delivery. Hill-Rom's obligation under this warranty is expressly limited to supplying replacement parts and/or service for, or replacing, at its option, any product which is, in the sole discretion of Hill-Rom, found to be defective. In addition to the foregoing one year warranty, Hill-Rom warrants to the original purchaser that the frame and welds on its products will be free from structural defects for the life of the product. Any product upgrade or modification initiated by Hill-Rom does not affect the original product warranty.

**SPECIFIC WARRANTIES****MATTRESS WARRANTIES**

Hill-Rom warrants to the original purchaser that its mattress product shall be free from defects in material and workmanship for a period of two (2) years from date of delivery. However, electro mechanical mattress components (compressors, valves, printed circuit boards, hoses, and couplers) are covered by the general one (1) year warranty.

**EXPENDABLES WARRANTIES**

A sixty (60) day limited warranty from date of delivery applies to expendable parts such as cushions, coverlets, software diskettes, locator badge batteries, dome light incandescent bulbs, overhead fluorescent tubes, heating elements, temperature probes, filter sheets, and microspheres. This warranty is limited to replacement of the parts covered.

**TO OBTAIN PARTS AND SERVICE**

In the United States, call Hill-Rom Technical Support Department at (800) 445-3720, Monday through Friday. In Canada, call Hill-Rom Technical Support Department at (800) 267-2337, Monday through Friday. Outside the United States and Canada, call your authorized Hill-Rom Distributor. In order to expedite service, we request you furnish the following information: customer identification number, product model number, serial number, and description of problem. A qualified specialist will provide, via telephone (United States and Canada), or FAX (Outside the United States and Canada), troubleshooting assistance for facility personnel and provide necessary parts to make repairs. If troubleshooting determines the need for on-site technical service, a qualified service representative will be dispatched. Replacement of non-technical items will be the responsibility of the customer. If requested by Hill-Rom, products or parts for which a warranty claim is made shall be returned prepaid to Hill-Rom's factory.

**OUT OF WARRANTY EXCHANGE POLICY**

After the expiration of the original warranty, upon request, Hill-Rom will ship as a replacement, components such as selected: motors and printed circuit boards, for like units returned to Hill-Rom by the original purchaser at a substantial savings. Please call Hill-Rom Technical Support Department for current pricing.

**PARTS AVAILABILITY POLICY**

Hill-Rom will offer parts for new and remanufactured products for ten (10) years from date of sale; for communications products for five (5) years from date of sale.

Note: Some original component parts and assemblies may not be available; functional equivalents may be substituted.

**THE FOREGOING WARRANTIES ARE EXCLUSIVE AND IN LIEU OF ALL OTHER EXPRESS WARRANTIES AND IMPLIED WARRANTIES, INCLUDING BUT NOT LIMITED TO, THE IMPLIED WARRANTIES OF MERCHANTABILITY AND FITNESS OF PURPOSE. HILL-ROM'S OBLIGATION UNDER THESE WARRANTIES SHALL NOT INCLUDE ANY LIABILITY FOR LOSS OF PROFITS, DIRECT, INDIRECT OR CONSEQUENTIAL DAMAGES OR DELAYS.** Some states, provinces, or countries do not allow the exclusion or

limitation of incidental or consequential damages, so the above exclusion or limitation may not apply. Any improper or negligent use, any alterations or repairs not in accordance with Hill-Rom's manuals or performed by others in such manner as in Hill-Rom's sole judgment affects the product materially and adversely, shall void these warranties. These warranties do not cover failures due to misuse, abuse, neglect, or lack of routine maintenance. No employee or representative of Hill-Rom is authorized to change these warranties in any way or grant any other warranty unless in writing and signed by a Hill-Rom officer. These warranties provide specific legal rights; but, there may be other available rights, which vary from state to state, province to province, or country to country.

Revised July 6, 2001

**Hill-Rom Company, Inc., 1069 State Route 46 E, Batesville, IN 47006-9167**

**NOTES:**

---

---

## Service Parts Ordering

Using the parts lists in this manual, identify the part number(s) you require. Find the product number and serial number on the product identification label.

Call Hill-Rom Technical Support at 800-445-3720 with the following information:

- Six-digit customer account number
- Purchase order number
- Product number
- Serial number
- Part number(s)

To promptly order parts, request part prices and availability, or follow up on a service order, use the following Hill-Rom fax number:

812-934-8472

### Terms:

- Net 30 days
- F.O.B. Batesville, IN
- Prepaid shipping charges added to invoice
- All orders shipped UPS ground unless specified

### Address all inquiries to:

ATTN TECHNICAL SUPPORT—PARTS  
HILL-ROM COMPANY, INC.  
1069 STATE ROUTE 46 E  
BATESVILLE IN 47006-9167

### Address all return goods to:

ATTN SERVICE STORES  
DISTRIBUTION CENTER DOOR D23  
HILL-ROM COMPANY, INC.  
COUNTY ROAD 300E  
BATESVILLE IN 47006-9167

**NOTE:**

To eliminate possible delays or incorrect billings, **do not** return any items without a Return Material Authorization (RMA) number. When a return is requested, an RMA packet is included with each order. This packet includes an RMA number, instructions, and a shipping label. If an RMA number is not available, obtain one by phoning Hill-Rom Technical Support at 800-445-3720.



---

## Exchange Policy

The following are policies for in-warranty and out-of-warranty exchanges from Hill-Rom.

### In-Warranty Exchanges

In some cases, Hill-Rom will request that parts/products be returned for inspection. When this occurs, you are expected to return parts/products within 30 days of receipt of the exchange part. If you fail to return the inoperative parts/products within the 30 day period, Hill-Rom will invoice your facility for the full selling price of the parts/products.

**NOTE:**

The preceding billing procedure pertains **only** to parts/products that Hill-Rom requests to be returned.

In some cases, the invoice accompanying the parts will show the full selling price (only for internal use at Hill-Rom). Do not confuse this price with your price.

**Do not** return any parts without an RMA number. When parts/products have been requested to be returned, Hill-Rom will include an RMA packet with the parts/products shipment. If an RMA number is not available, obtain one by phoning Hill-Rom Technical Support at 800-445-3720.

### Out-of-Warranty Exchanges

You are expected to return the inoperative parts/products within 30 days of receipt of the exchange part. Hill-Rom will include an RMA packet with the parts/products shipment. If an RMA number is not available, obtain one by phoning Hill-Rom Technical Support at 800-445-3720. Hill-Rom will invoice your facility for the full selling price of the parts/products. Upon return of the inoperative parts/products, Hill-Rom will issue a credit to your facility for **the difference between the exchange price and the full selling price of the parts/products**.

---

## Recommended Spare Parts

For a recommended spare parts list to service five or more units, see table 1-6 on page 1-36.

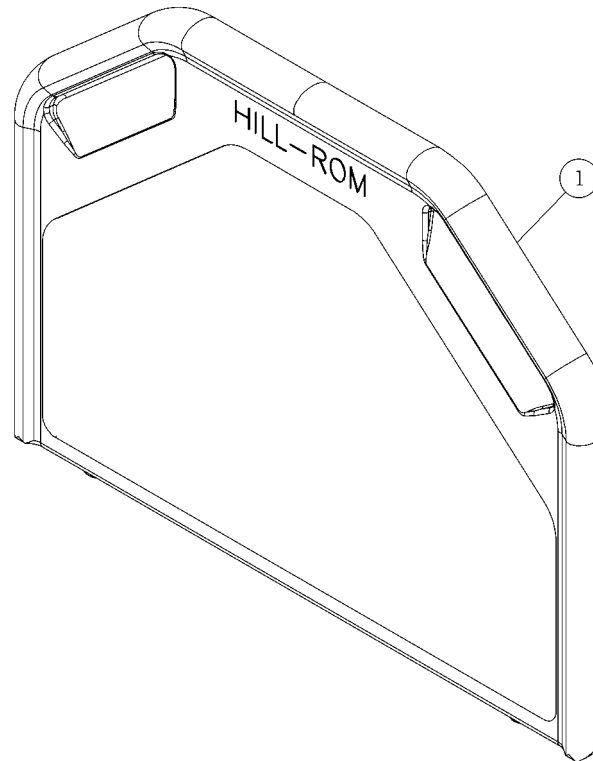
**Table 1-6. Recommended Spare Parts**

<b>Part Number</b>	<b>Quantity</b>	<b>Description</b>
43880	2	Screw, Torx® <sup>a</sup> (used to secure the head end siderails, and/or assist bars to the bed frame)
72940	6	Washer, split (used to secure the siderails in position on the slide bracket or slide plate)

a. Torx® is a registered trademark of Textron, Inc.

## Headboard Assembly—LTC

Figure 1-6. Headboard Assembly—LTC



m334\_002

Table 1-7. Headboard Assembly—LTC

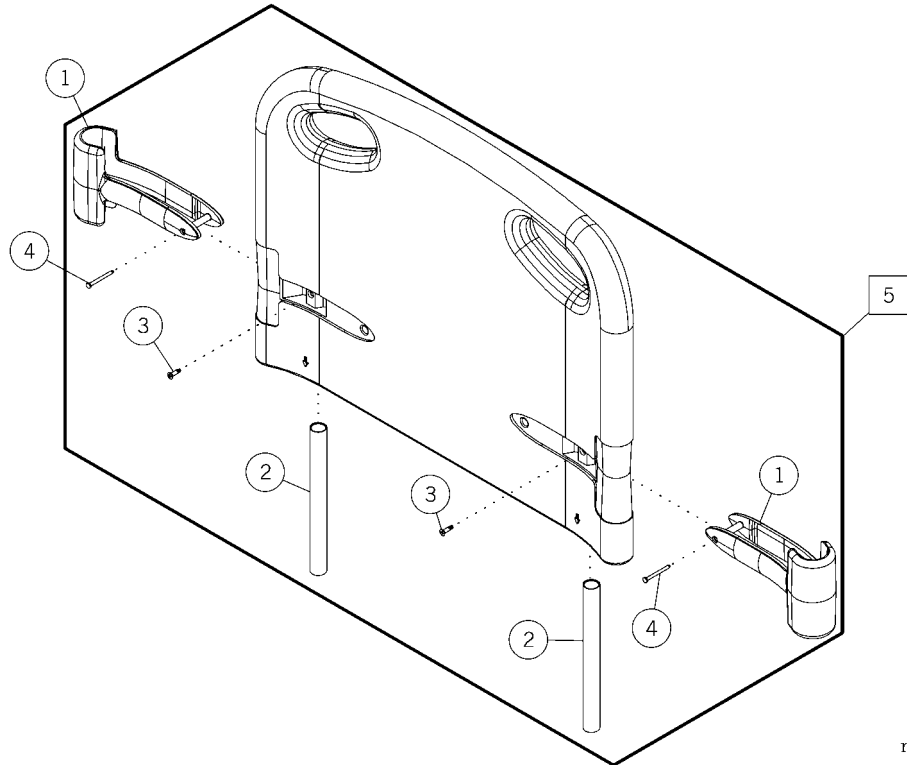
Item Number	Part Number	Quantity	Description
1	71969	1	Headboard assembly, LTC (light neutral)
	72253	1	Headboard assembly, LTC, taupe

**NOTE:**

This headboard is used on all beds **except** the Advanta™ Bed (P1600/P1603/P1604).

## Headboard Assembly—Advanta™ Bed

Figure 1-7. Headboard Assembly—Advanta™ Bed



m334\_001

Table 1-8. Headboard Assembly—Advanta™ Bed

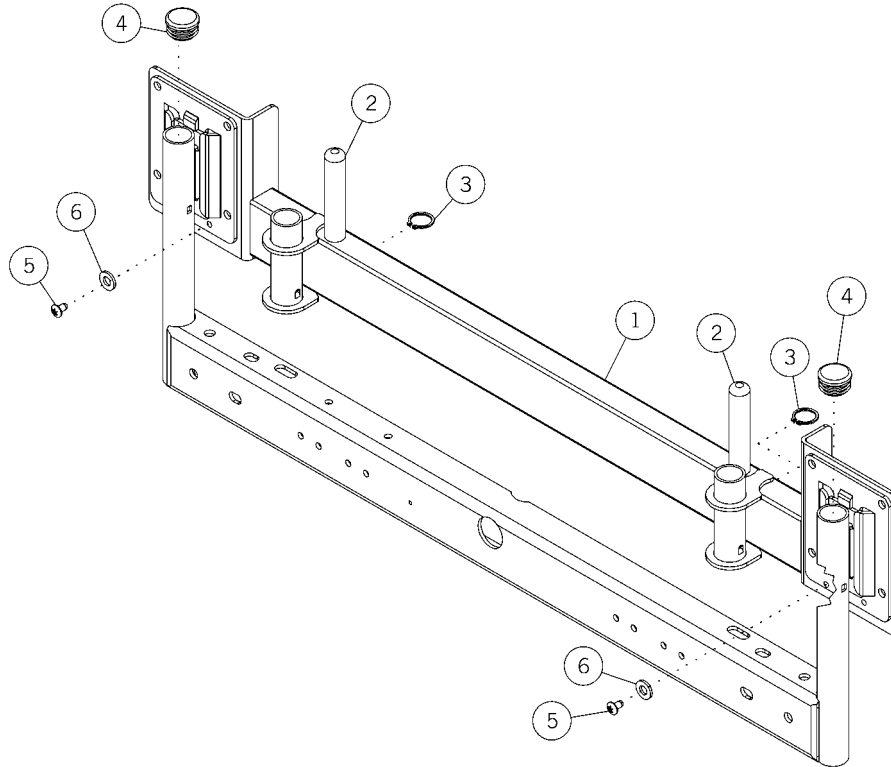
Item Number	Part Number	Quantity	Description
1	71971	2	Headboard bumper
2	71973	2	Headboard mounting tube
3	9003802	2	Screw
4	63748	2	Screw, hilow
5	71968	1	Headboard assembly, Advanta™ Bed

**NOTE:**

This headboard is used on the Advanta™ Bed (P1600/P1603/P1604) **only**.

## Bayonet-Style Headboard Adapter

Figure 1-8. Bayonet-Style Headboard Adapter



m334\_037

Table 1-9. Bayonet-Style Headboard Adapter

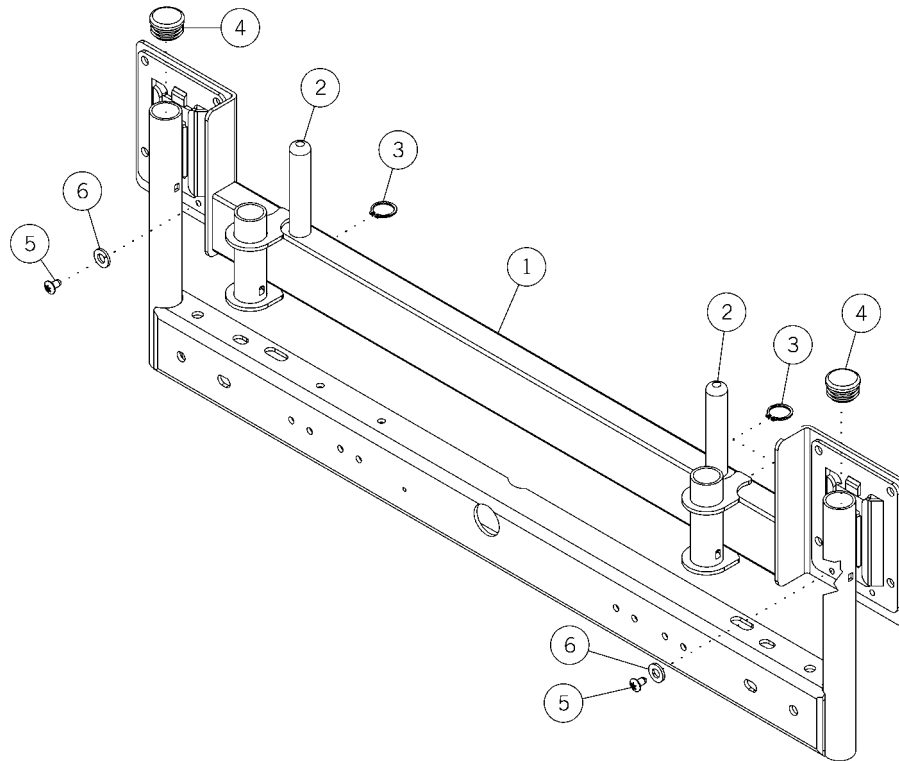
Item Number	Part Number	Quantity	Description
1	72371	1	Headboard panel weldment, light neutral
2	71976pl	2	Post, head panel, plated
3	35325	2	E-ring
4	45642	2	Ribbed insert
5	9005202	2	Screw
6	10714	2	Washer

### NOTE:

The bayonet-style headboard adapter is used on all the Century+™ Bed (P1400), Patient Care Bed (P8200/P8350), Century Series Bed (P835/P837) with **parallelogram** siderails, Centra Bed (P850/P852), Retractable Bed (P8500), and Resident® Low Bed (P872).

## Offset Bayonet-Style Headboard Adapter

Figure 1-9. Offset Bayonet-Style Headboard Adapter



m334\_004

Table 1-10. Offset Bayonet-Style Headboard Adapter

Item Number	Part Number	Quantity	Description
1	72368	1	Headboard adapter, bayonet, light neutral
2	71976	2	Post, head panel
3	35325	2	E-ring
4	45642	2	Ribbed insert
5	9005202	2	Screw
6	10714	2	Washer

**NOTE:**

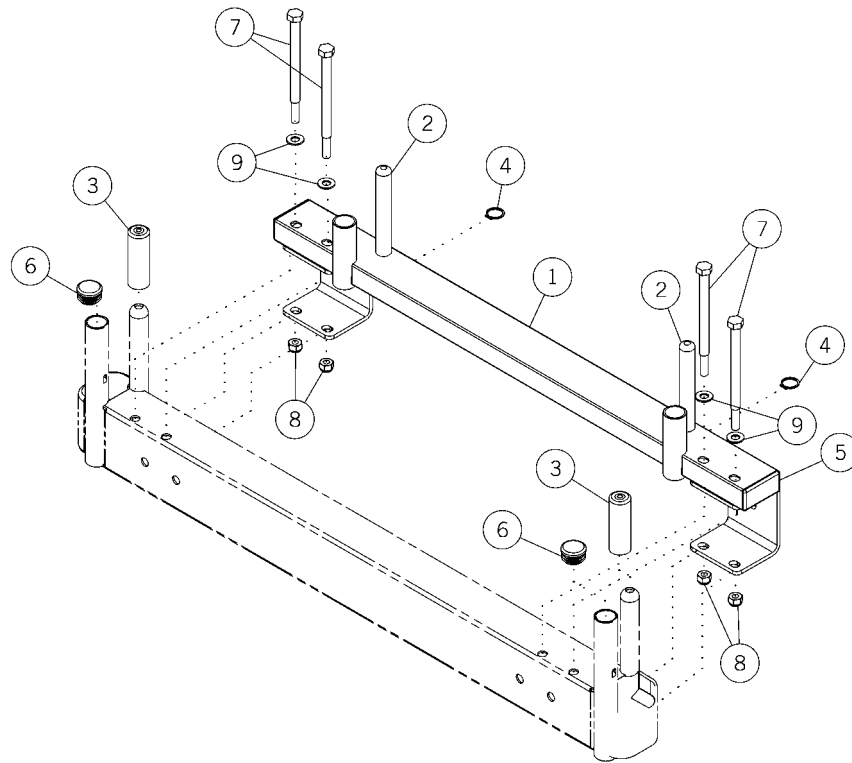
The offset bayonet-style headboard adapter is used on the Resident® LTC Bed (P870), 715 Bed (P715/P718), 720 Bed (P720/P723), 815 Bed (P815), 820 Bed (P820/P822), and Century Series Bed (P835/P837) with **rectangular** siderails.

**NOTES:**

---

## Post-Style Panel Locating Bracket

Figure 1-10. Post-Style Panel Locating Bracket



m334\_006



**Table 1-11. Post-Style Panel Locating Bracket**

Item Number	Part Number	Quantity	Description
1	72377	1	Base tube panel weldment, light neutral
2	71976	2	Post, head panel
3	72415	2	Cap, plastic
4	35325	2	E-ring
5	35476	2	End plug, rectangular
6	45642	2	Ribbed insert
7	72496	4	Bolt
8	60619	4	Nylok® <sup>a</sup> nut
9	127357	4	Washer, SAE

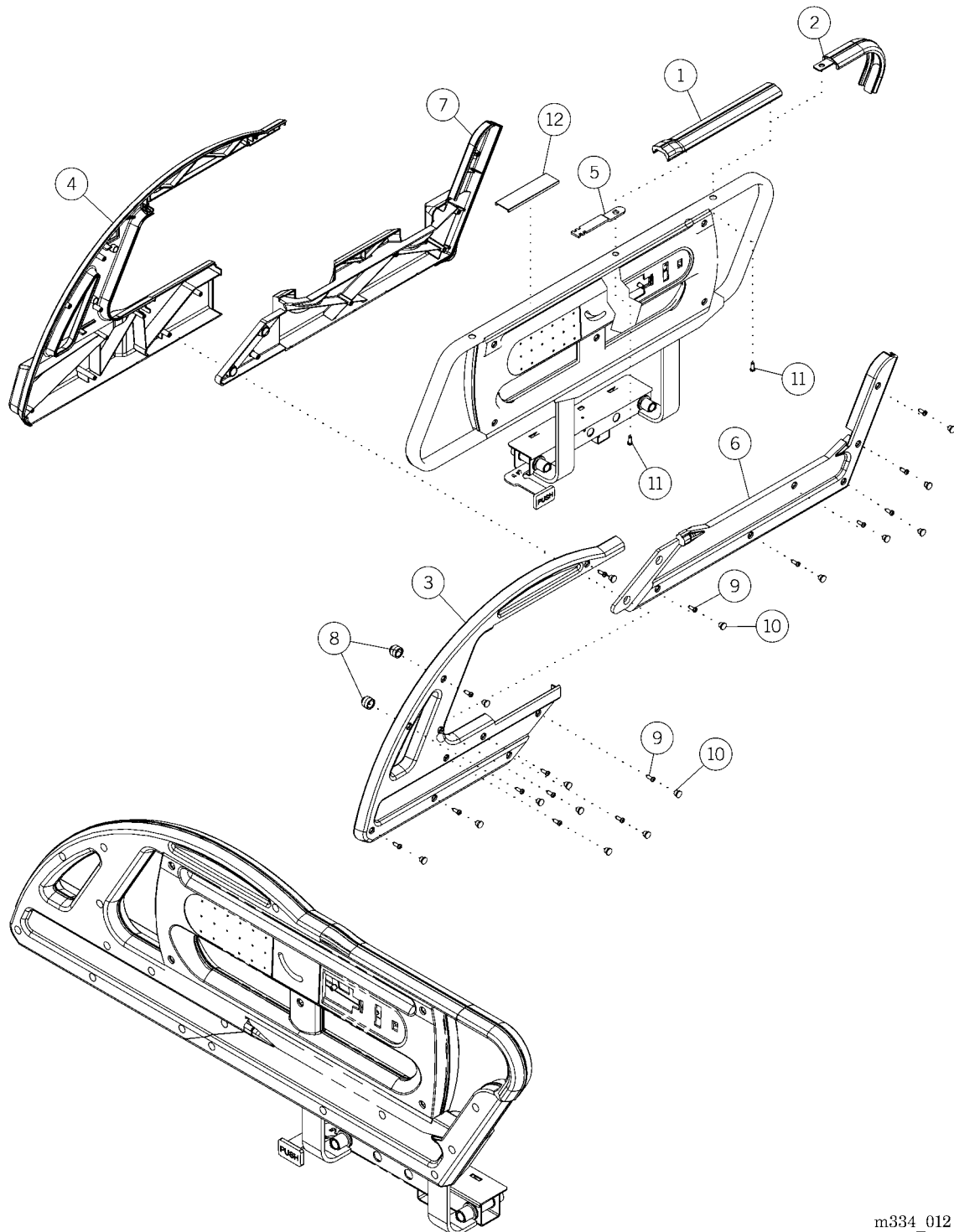
a. Nylok® is a registered trademark of Nylok Fasteners Corp.

**NOTE:**

The post-style panel locating bracket is used on the Centra Bed (P1050/P1052/P1060/P1062/P1063/P1064), Advance® Series Bed (P1103/P1104/P1105/P1106/P1115/P1116/P1135/P1136/P1145/P1146/P1155/P1165), Advance® 2000 Bed (P1100/P1110/P1120/P1130/P1140), and Advanta™ Bed (P1600/P1603/P1604).

## Headrail Assembly—Advanta™ Bed

Figure 1-11. Headrail Assembly—Advanta™ Bed



m334\_012

Table 1-12. Headrail Assembly—Advanta™ Bed

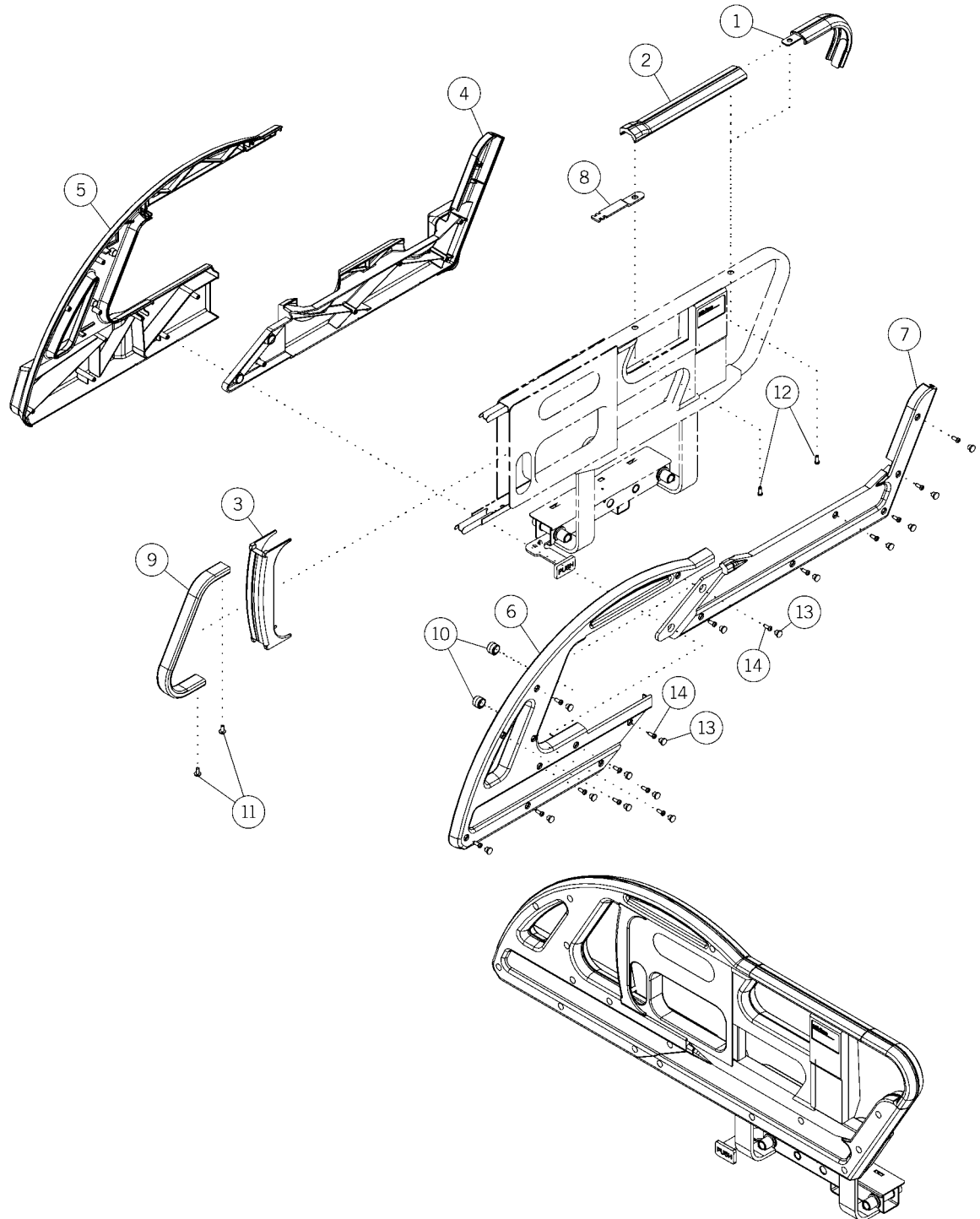
Item Number	Part Number	Quantity	Description
1	71729	1	Cane, top, parallelogram, light neutral
2	71725	1	Cane, front, light neutral
3	71737	1	Headrail extension, foot end, lh outer, light neutral
	71769	1	Headrail extension, foot end, rh outer, light neutral
4	71735	1	Headrail extension, foot end, lh inner, taupe
	71771	1	Headrail extension, foot end, rh inner, light neutral
5	126928	1	Reinforcer, key
6	71744	1	Headrail extension, head end, lh outer, light neutral
	71773	1	Headrail extension, head end, rh outer, light neutral
7	126857	1	Headrail extension, head end, lh inner, light neutral
	126863	1	Headrail extension, head end, rh inner, light neutral
8	71750	2	Cam insert, light neutral
9	9018810	16	Screw
10	63683	21	Screw cover
11	9018808	2	Hilow thread-forming screw
12	128128	1	Filler, headrail

**NOTE:**

Use this headrail assembly kit with the Advanta™ Bed **only**.

## Headrail Assembly—Advance® Series Bed and Advance® 2000 Bed

Figure 1-12. Headrail Assembly—Advance® Series Bed and Advance® 2000 Bed



m334\_014

**Table 1-13. Headrail Assembly—  
Advance® Series Bed and Advance® 2000 Bed**

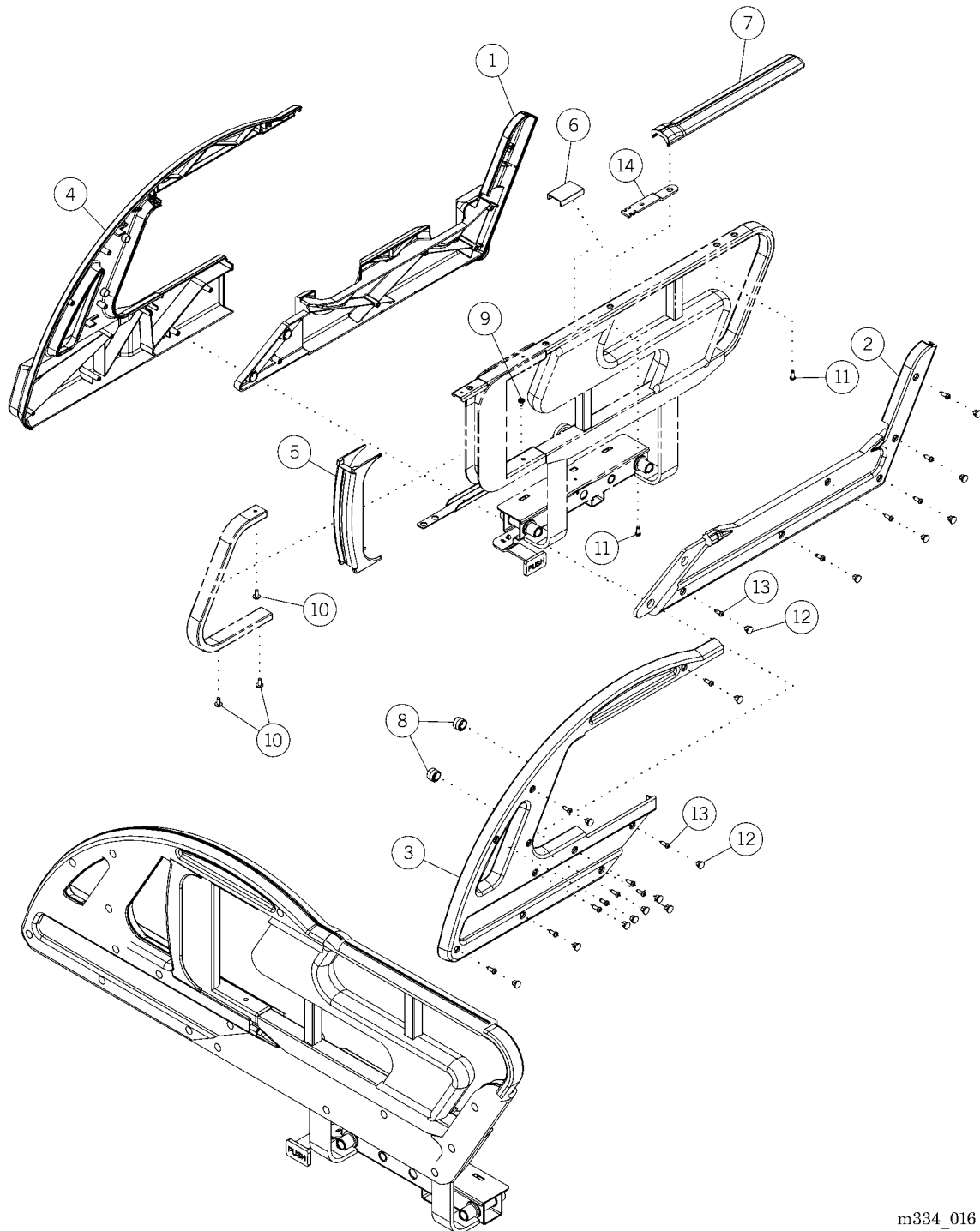
Item Number	Part Number	Quantity	Description
1	71725	1	Cane, front, parallelogram, light neutral
2	71729	1	Cane, top, parallelogram, light neutral
3	71732	1	Filler, adapter, light neutral
4	71742	1	Headrail extension, parallelogram (lh)
	71775	1	Headrail extension, parallelogram (rh)
5	71735	1	Headrail extension, foot end, lh inner, light neutral
	71771	1	Headrail extension, foot end (rh)
6	71737	1	Headrail extension, foot end (lh)
	71769	1	Headrail extension, foot end (rh)
7	71744	1	Headrail extension (lh)
	71773	1	Headrail extension, parallelogram (rh)
8	126928	1	Reinforcer
9	72025	1	Frame, foot end support
10	71750	2	Cam insert, light neutral
11	18921	2	Screw (package of 10)
12	9018808	2	Screw, hilow thread-forming
13	63683	16	Screw cover, hex plug, light neutral
14	9108810	16	Screw

**NOTE:**

Use this headrail assembly kit with the Advance® Series Bed and Advance® 2000 Bed **only**.

## Headrail Assembly—Parallelogram, without Assist Bar

Figure 1-13. Headrail Assembly—Parallelogram, without Assist Bar



m334\_016

**Table 1-14. Headrail Assembly—Parallelogram, without Assist Bar**

Item Number	Part Number	Quantity	Description
1	126857	1	Headrail extension, head end, lh inner, light neutral
	128077	1	Headrail extension, head end, taupe
	126863	1	Headrail extension, head end (light neutral)
	128078	1	Headrail extension, head end, rh inner, taupe
2	71744	1	Headrail extension, head end, lh outer, light neutral
	71745	1	Headrail extension, parallelogram (lh, taupe)
	71773	1	Headrail extension, parallelogram (rh, light neutral)
	71774	1	Headrail extension, parallelogram (rh, taupe)
3	71763	1	Headrail extension, foot end, light neutral (lh)
	71764	1	Headrail extension, foot end, taupe (lh)
	71767	1	Headrail extension, foot end, light neutral (rh)
	71768	1	Headrail extension, foot end, taupe (rh)
4	71759	1	Headrail extension, foot end, light neutral (lh)
	71760	1	Headrail extension, foot end, taupe (lh)
	71765	1	Headrail extension, foot end, light neutral (rh)
	71766	1	Headrail extension, foot end, taupe (rh)
5	72684	1	Filler, adapter, light neutral
6	71730	1	Filler, switch, old style top
7	71778	1	Cane, top, parallelogram, light neutral
8	71750	2	Cam insert, light neutral
9	43878	1	Screw, Torx® <sup>a</sup>
10	18921	3	Screw (package of 10)

a. Torx® is a registered trademark of Textron, Inc.

Item Number	Part Number	Quantity	Description
11	9018808	2	Screw, hilow thread-forming
12	63683	16	Screw cover (light neutral)
	71989	16	Hex plug, taupe
13	9018810	16	Screw
14	127237	1	Reinforcer, double

**NOTE:**

Use this **light neutral** headrail assembly kit with a light neutral Century Series Bed (P835/P837), Centra II Bed (P1050/P1052/P1060/P1062/P1063/P1064), Century+™ Bed (P1400), Patient Care Bed (P8200/P8350), or Retractable Bed (P8400/P8500) with **parallelogram** siderails and no assist bar.

**NOTE:**

Use this **taupe** headrail assembly kit with a taupe Century Series Bed (P835/P837), Centra Bed (P850/P852), Centra II Bed (P1050/P1052/P1060/P1062/P1063/P1064), Century+™ Bed (P1400), Patient Care Bed (P8200/P8350), and Retractable Bed (P8400/P8500) with **parallelogram** siderails and no assist bar.

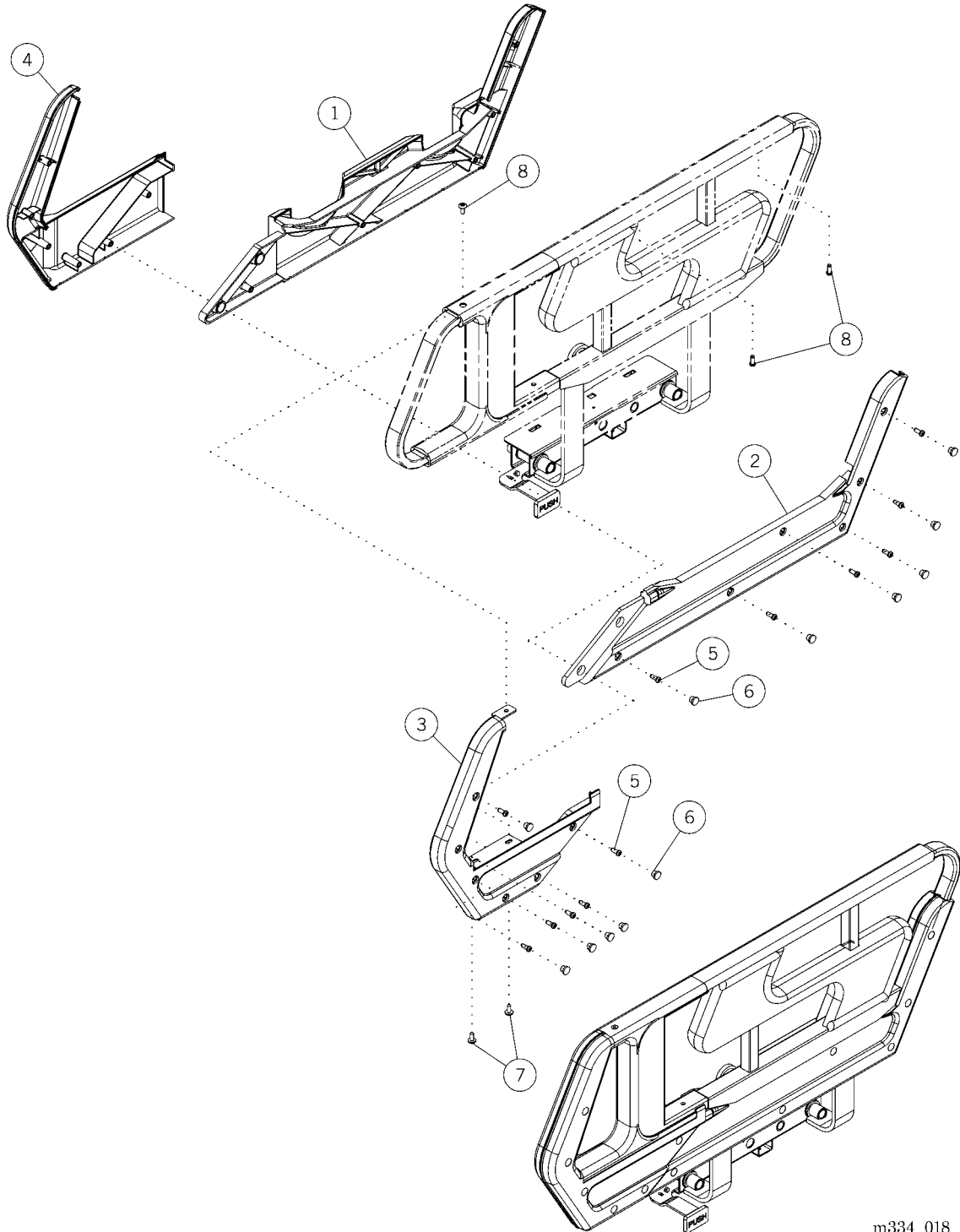


**NOTES:**

---

## Headrail Assembly—Parallelogram, with Assist Bar

Figure 1-14. Headrail Assembly—Parallelogram, with Assist Bar



m334\_018

**Table 1-15. Headrail Assembly—Parallelogram, with Assist Bar**

<b>Item Number</b>	<b>Part Number</b>	<b>Quantity</b>	<b>Description</b>
1	126857	1	Headrail extension, head end, lh inner, light neutral
	128077	1	Headrail extension, head end, lh inner, taupe
	126863	1	Headrail extension, head end, rh inner, light neutral
	128078	1	Headrail extension, head end, rh inner, taupe
2	71744	1	Headrail extension, head end, lh outer, light neutral
	71745	1	Headrail extension, head end, lh outer, taupe
	71773	1	Headrail extension, head end, rh outer, light neutral
	71774	1	Headrail extension, head end, rh outer, taupe
3	71752	1	Headrail extension, assist bar, foot end (lh, light neutral)
	71753	1	Headrail extension, assist bar, foot end (lh, taupe)
	71779	1	Headrail extension, assist bar, foot end (rh, light neutral)
	71780	1	Headrail extension, assist bar, foot end (rh, taupe)
4	71756	1	Headrail extension, assist bar, foot end (lh, light neutral)
	71757	1	Headrail extension, assist bar, foot end (lh, taupe)
	71781	1	Headrail extension, assist bar, foot end (rh, light neutral)
	71782	1	Headrail extension, assist bar, foot end (rh, taupe)
5	9018810	12	Screw
6	63683	12	Screw cover (light neutral)
	71989	12	Hex plug, taupe

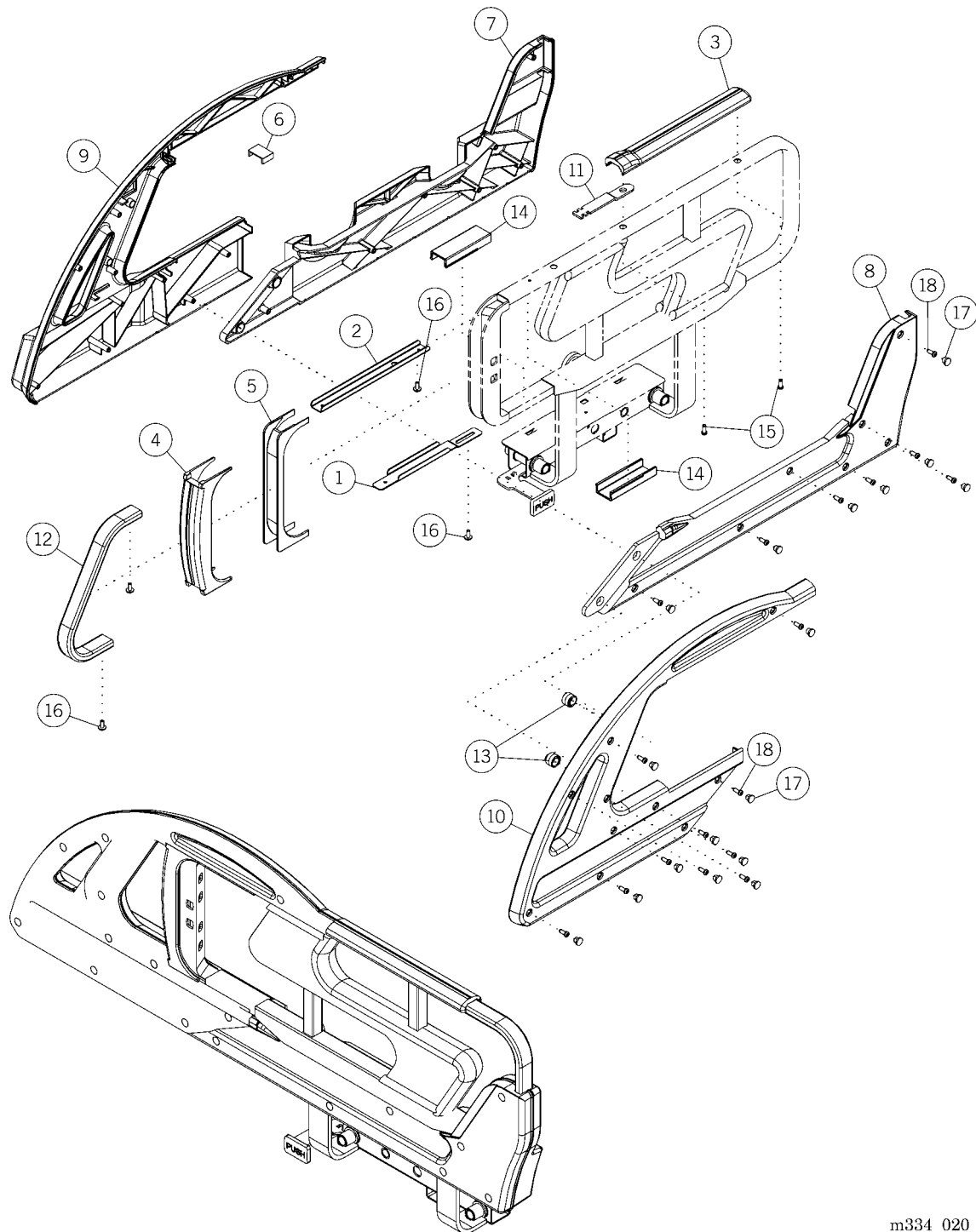
Item Number	Part Number	Quantity	Description
7	9018808	2	Screw, hilow thread-forming
8	18921	3	Screw (package of 10)

**NOTES:**

---

## Small Rectangular Headrail Assembly

Figure 1-15. Small Rectangular Headrail Assembly



m334\_020

**Table 1-16. Small Rectangular Headrail Assembly**

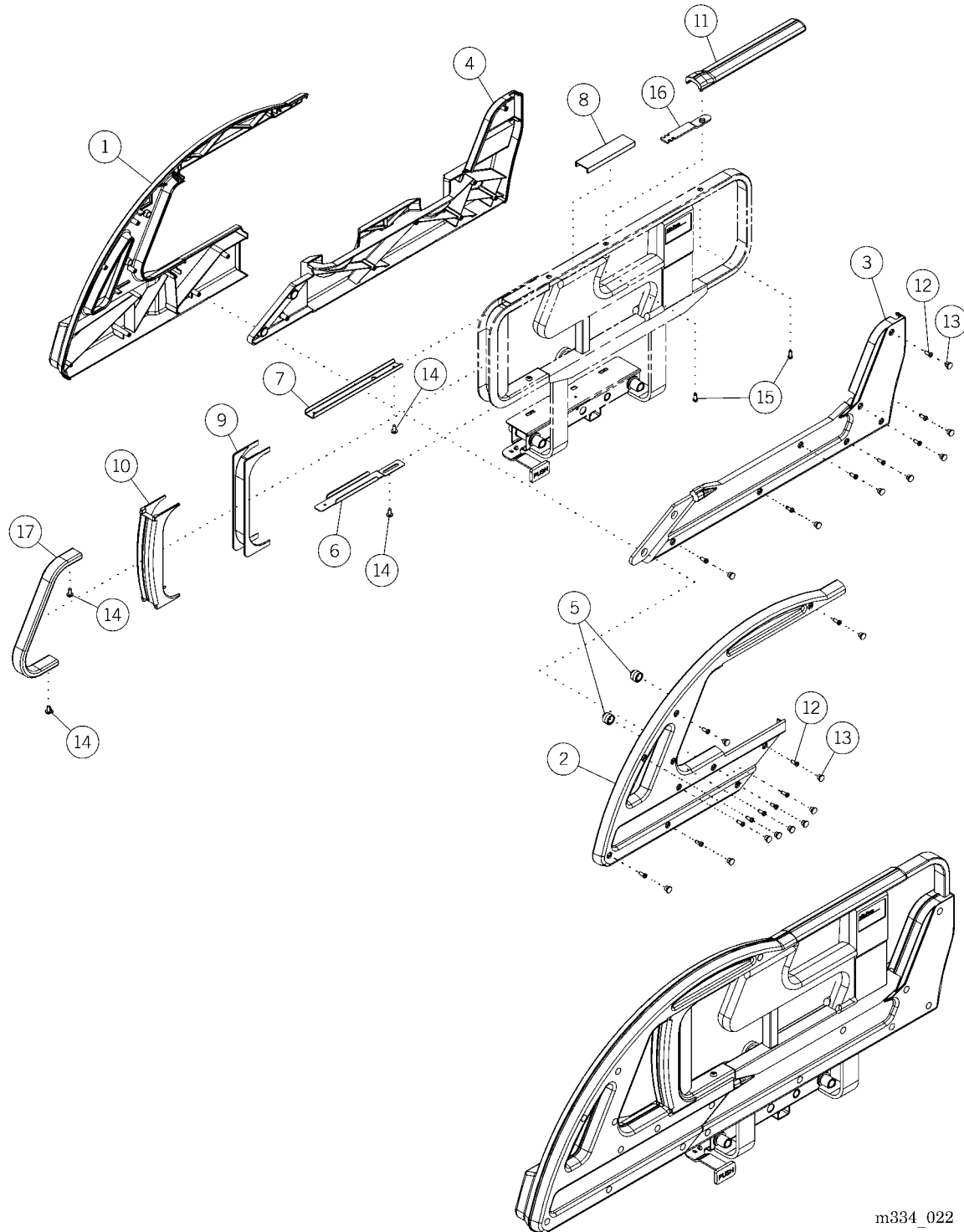
Item Number	Part Number	Quantity	Description
1	71986	1	Base, bottom support
2	71987	1	Base, top support
3	71734	1	Cane, top, rectangular, taupe
4	71733	1	Filler, adapter, taupe
5	71727	1	Filler, adapter, taupe
6	71751	1	Filler, Advance® Series Bed, top, light neutral
7	71784	1	Headrail extension, rectangular (lh, inner)
	71755	1	Headrail extension, rectangular (rh, inner)
8	71783	1	Headrail extension, rectangular (lh, outer)
	71754	1	Headrail extension, rectangular (rh, outer)
9	71736	1	Headrail extension, foot end (lh, inner)
	71772	1	Headrail extension, foot end (rh, inner)
10	71738	1	Headrail extension, foot end (lh, outer)
	71770	1	Headrail extension, foot end (rh, outer)
11	126928	1	Reinforcer, key
12	72025	1	Frame, foot end support
13	71750	2	Cam insert, light neutral
14	71723	2	Filler, switch, small, taupe
15	9018808	2	Screw, hilow thread-forming
16	18921	4	Screw (package of 10)
17	71989	17	Hex plug, taupe
18	9018810	17	Screw

**NOTE:**

Use this headrail assembly kit with the 715 Bed (P715/P718), 720 Bed (P720/P723), 815 Bed (P815), 820 Bed (P820/P822), Century Series Bed (P835/P837), 840 Bed (P840/P842), and Centra Bed (P850/P852).

## Large Rectangular Headrail Assembly

Figure 1-16. Large Rectangular Headrail Assembly



m334\_022



**Table 1-17. Large Rectangular Headrail Assembly**

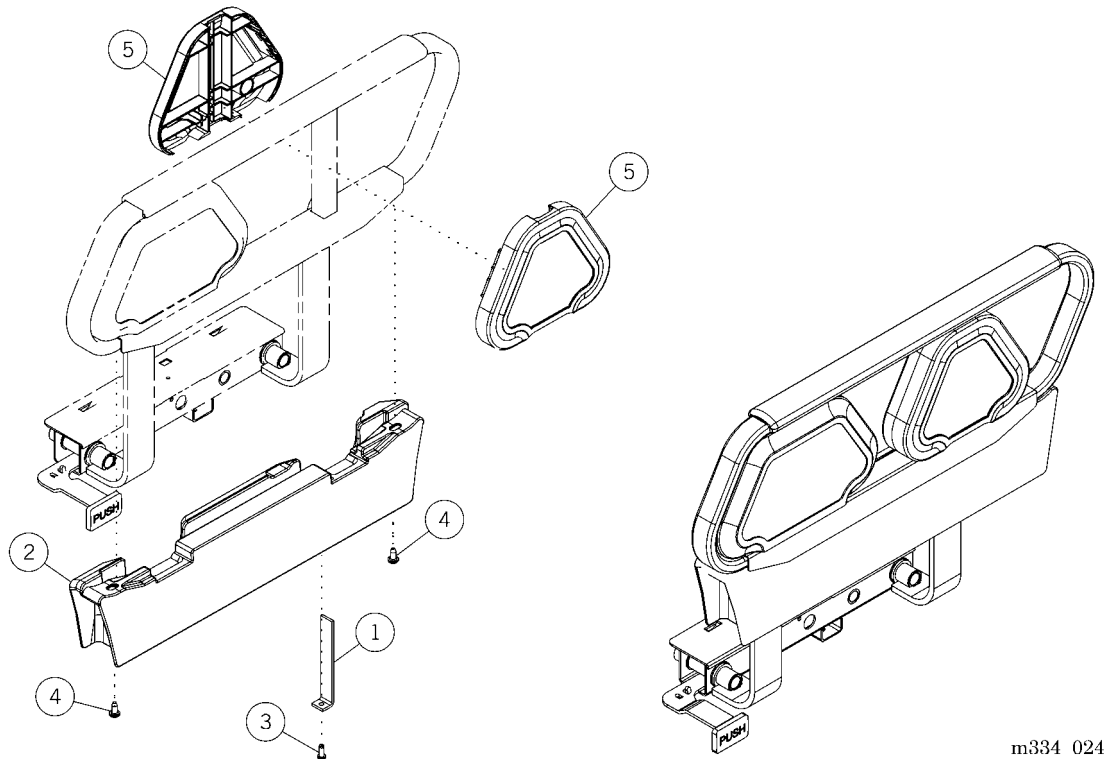
Item Number	Part Number	Quantity	Description
1	71736	1	Headrail extension, foot end section, lh inner, taupe
	71772	1	Headrail extension, foot end section, rh inner, taupe
2	71738	1	Headrail extension, foot end section, lh outer, taupe
	71770	1	Headrail extension, foot end section, rh outer, taupe
3	71783	1	Headrail extension, rectangular head end, lh outer, taupe
	71754	1	Headrail extension, rectangular head end, rh outer, taupe
4	71784	1	Headrail extension, rectangular head end, lh inner, taupe
	71755	1	Headrail extension, rectangular head end, rh inner, taupe
5	71750	2	Cam insert, light neutral
6	71986	1	Base, bottom support
7	71987	1	Base, top support
8	71731	1	Filler, switch, old style, top
9	71727	1	Filler, adapter, taupe
10	72685	1	Filler, adapter, taupe
11	71734	1	Cane, top, rectangular, taupe
12	9018810	17	Screw
13	71989	17	Cover, screw
14	18921	4	Screw (package of 10)
15	9018808	2	Screw, hilow thread-forming
16	126928	1	Reinforcer, key
17	72025	1	Siderail extension

**NOTE:**

Use this headrail assembly kit with the Century Series Bed (P835/P837), 840 Bed (P840/P842), and Centra Bed (P850/P852).

## Headrail Assembly—Resident® LTC Bed and Resident® Low Bed

Figure 1-17. Headrail Assembly—Resident® LTC Bed and Resident® Low Bed



m334\_024

Table 1-18. Headrail Assembly—  
Resident® LTC Bed and Resident® Low Bed

Item Number	Part Number	Quantity	Description
1	71988	1	Footrail support strip
2	71758	1	Headrail extension, LTC, lh, taupe
	71787	1	Headrail extension, LTC, rh, taupe
3	9018808	1	Screw, hilow thread-forming
4	44489	2	Screw, Torx® <sup>a</sup>
5	71728	2	Panel, Resident® LTC Bed siderail, taupe

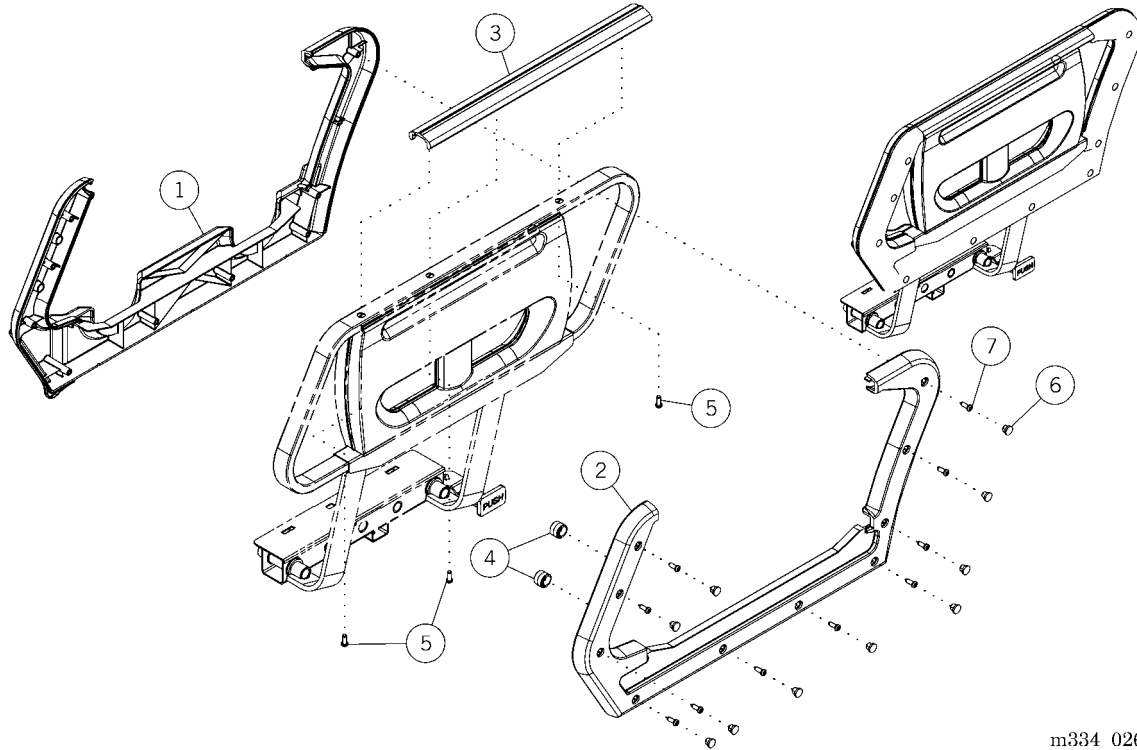
a. Torx® is a registered trademark of Textron, Inc.

**NOTE:**

Use this headrail assembly kit with the Resident® LTC Bed and Resident® Low Bed **only**.

## Footrail Assembly—Advanta™ Bed

Figure 1-18. Footrail Assembly—Advanta™ Bed



m334\_026

Table 1-19. Footrail Assembly—Advanta™ Bed

Item Number	Part Number	Quantity	Description
1	71746	1	Footrail extension, parallelogram (lh)
	71748	1	Footrail extension, parallelogram (rh)
2	71747	1	Footrail extension, parallelogram (lh)
	71749	1	Footrail extension, parallelogram (rh)
3	72036	1	Footrail top cane, light neutral
4	71750	2	Cam insert, light neutral
5	9108808	3	Screw, hilow thread-forming
6	63683	10	Screw cover
7	9018810	10	Screw

**NOTE:**

Use this footrail assembly kit with the Advanta™ Bed **only**.

## Footrail Assembly—Advance® Series Bed and Advance® 2000 Bed

Figure 1-19. Footrail Assembly—Advance® Series Bed and Advance® 2000 Bed

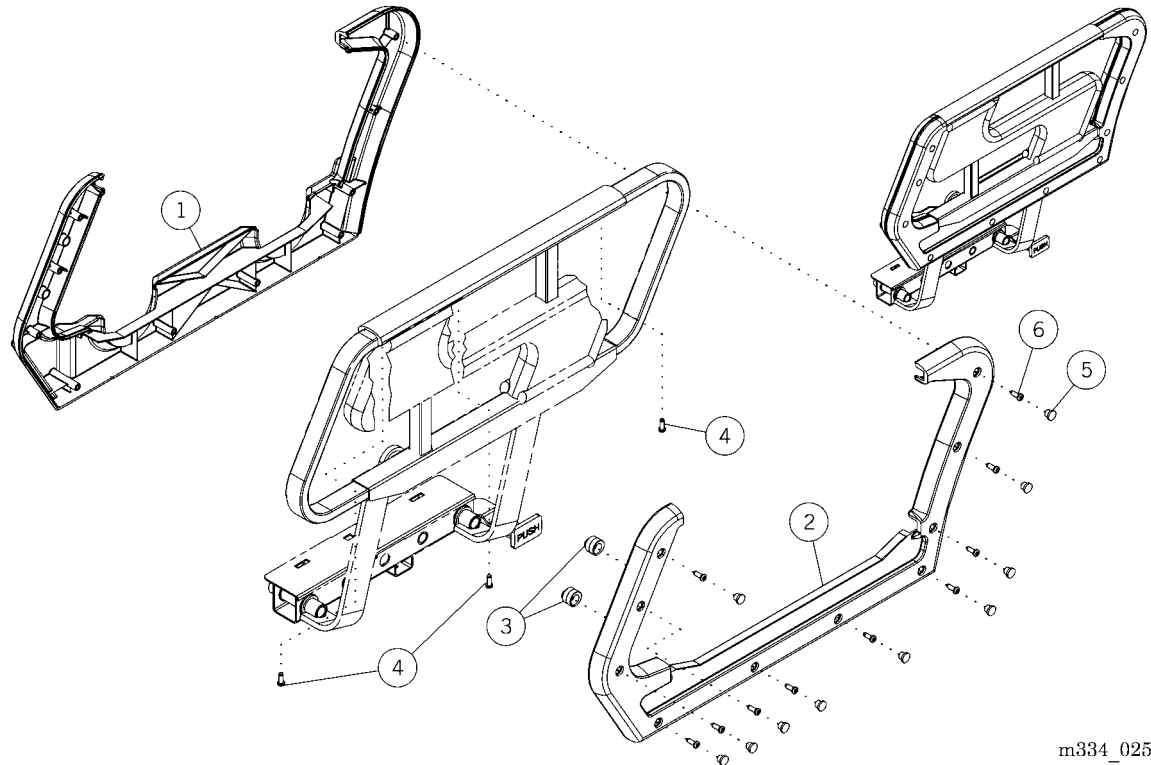


Table 1-20. Footrail Assembly—  
Advance® Series Bed and Advance® 2000 Bed

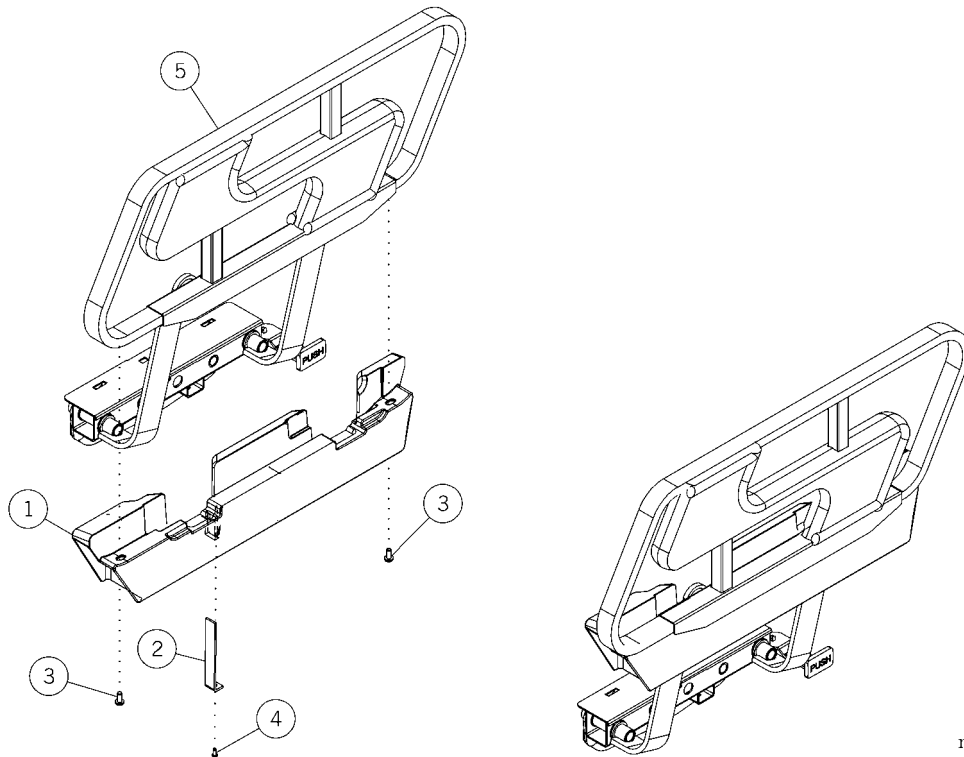
Item Number	Part Number	Quantity	Description
1	71746	1	Footrail extension, parallelogram (lh)
	71748	1	Footrail extension, parallelogram (rh)
2	71747	1	Footrail extension, parallelogram (lh)
	71749	1	Footrail extension, parallelogram (rh)
3	71750	2	Cam insert, light neutral
4	9018808	3	Screw, hilow thread-forming
5	63683	10	Screw cover
6	9018810	10	Screw

**NOTE:**

Use this footrail assembly kit with the Advance® Series Bed and Advance® 2000 Bed **only**.

## Footrail Assembly—Rectangular or Parallelogram Siderail

Figure 1-20. Footrail Assembly—Rectangular or Parallelogram Siderail



**Table 1-21. Footrail Assembly—Rectangular or Parallelogram Siderail,**

Item Number	Part Number	Quantity	Description
1	71740	1	Footrail extension, taupe (lh)
	71786	1	Footrail extension, taupe (rh)
	71785	1	Footrail extension, lh, light neutral
	71739	1	Footrail extension, rh, light neutral
2	71988	1	Footrail support strip
3	44489	2	Screw, Torx® <sup>a</sup>
4	9018808	1	Screw, hilow thread-forming
5	41392	1	Foot siderail assembly—lh
	41391	1	Foot siderail assembly—rh

a. Torx® is a registered trademark of Textron, Inc.

**NOTE:**

Use this footrail assembly kit with all beds **except** the Advanta™ Bed, Advance® Series Bed, and Advance® 2000 Bed.

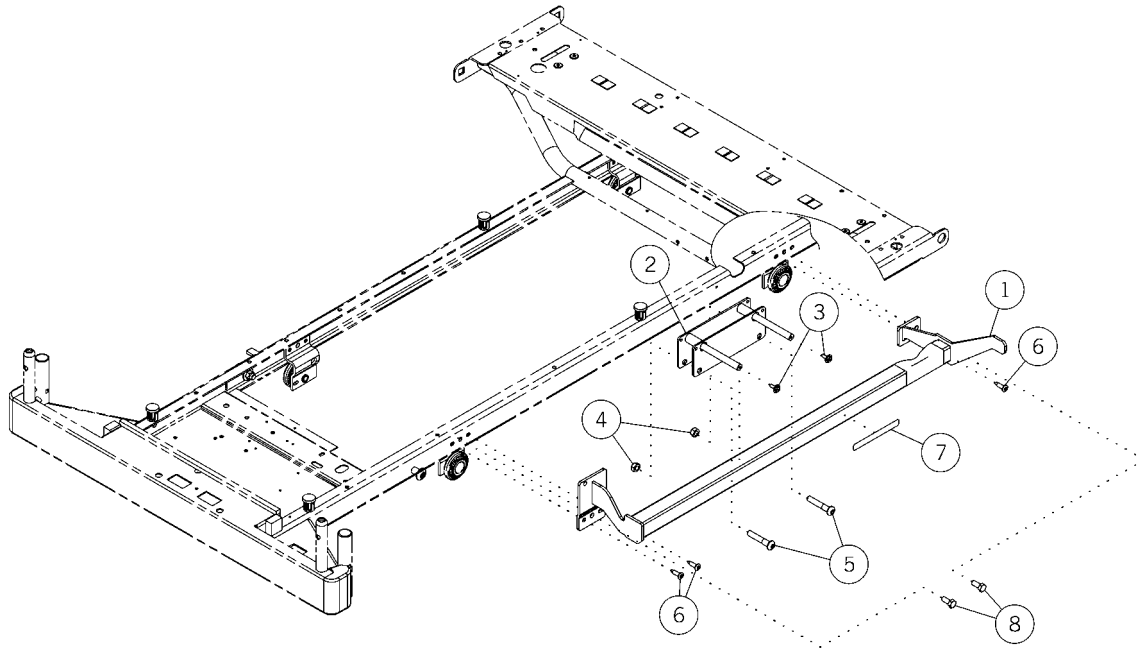
**NOTES:**

---

---

## Retracting Footrail Mounting Frame Assembly

Figure 1-21. Retracting Footrail Mounting Frame Assembly



m334\_033



**Table 1-22. Retracting Footrail Mounting Frame Assembly**

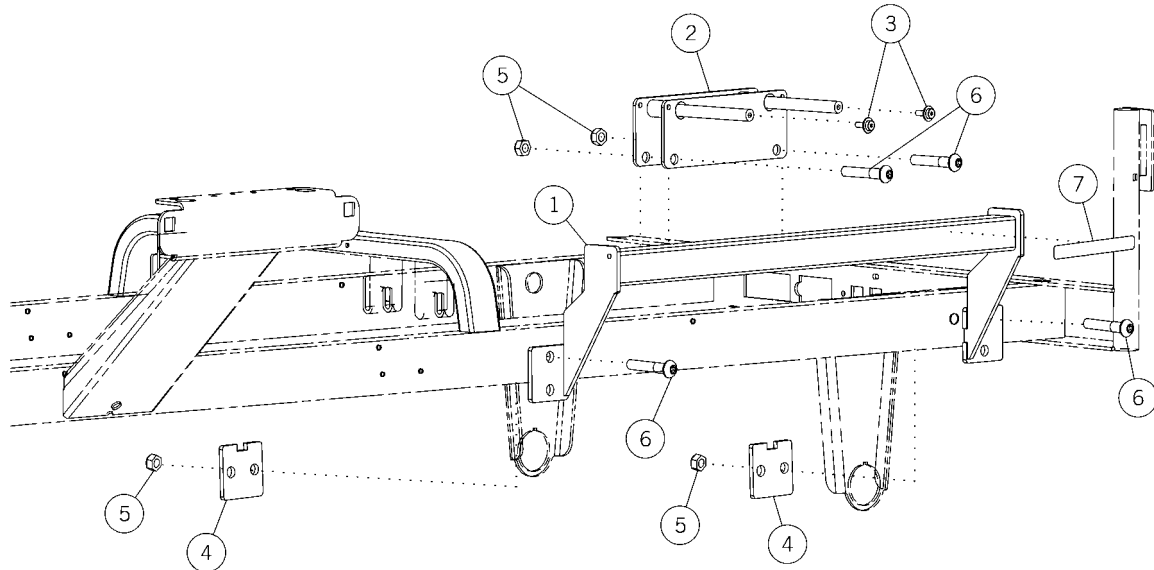
Item Number	Part Number	Quantity	Description
1	72601	1	Weldment, footrail mounting frame, retracting, light neutral (lh)
	72615	1	Weldment, footrail mounting frame, retracting, light neutral (rh)
2	72544	1	Weldment, slide plate
3	47172	2	Screw
4	60949	2	Nut
5	127912	2	Screw
6	9024412	3	Bolt (for use on all beds <b>except</b> Retractable Bed)
7	72787	1	Warning label
8	9001612	2	Screw (for use on Retractable Bed <b>only</b> )

**NOTE:**

Use the retracting footrail mounting frame assembly with the 840 Bed (P840/P842), Centra Bed (P850/P852), Centra II Bed (P1050/P1052/P1060/P1062/P1063/P1064), Advance® 2000 Bed (P1100/P1110/P1120/P1130/P1140), Advance® Series Bed (P1103/P1104/P1105/P1106/P1115/P1116/P1135/P1136/P1145/P1146/P1155/P1165), Advanta™ Bed (P1600/P1603/P1604), and Retractable Bed (P8400/8500).

## Non-Retracting Footrail Mounting Frame Assembly

Figure 1-22. Non-Retracting Footrail Mounting Frame Assembly



m334\_034

Table 1-23. Non-Retracting Footrail Mounting Frame Assembly

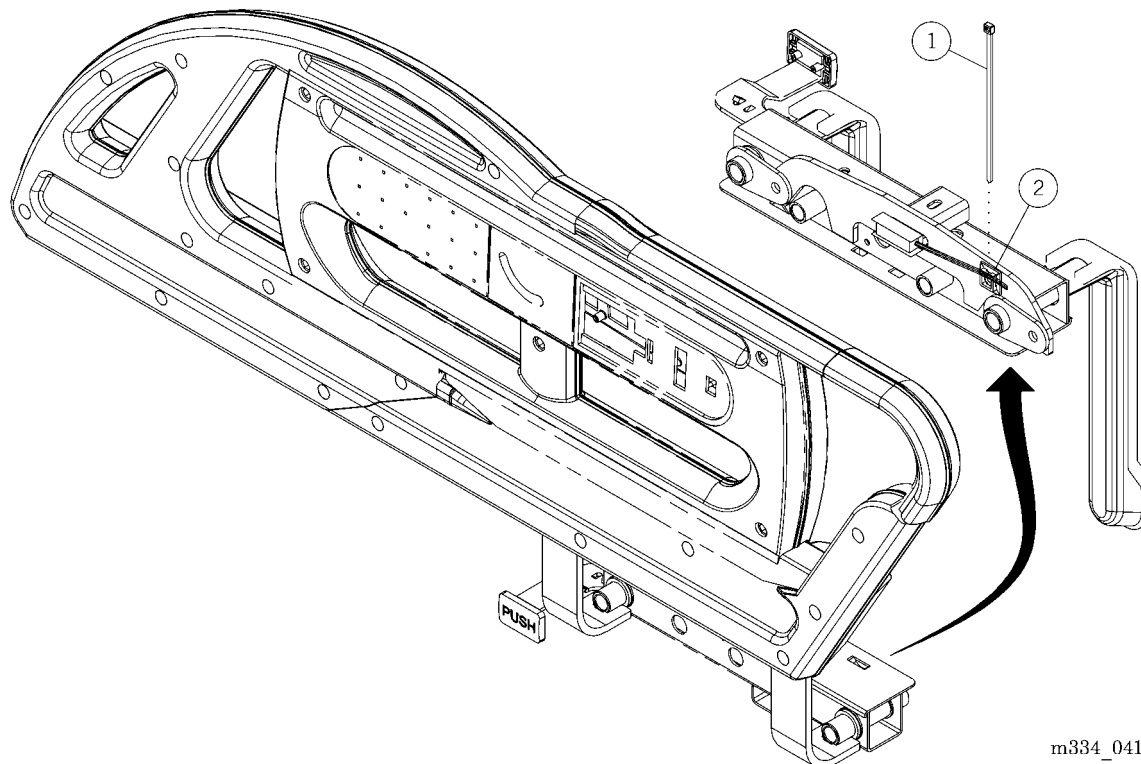
Item Number	Part Number	Quantity	Description
1	72542	1	Weldment, footrail mounting frame
2	72544	1	Weldment, slide plate
3	47172	2	Screw, #10-32 x 5/8", phillips, tapping
4	72538	2	Plate, footrail mounting, frame
5	60949	4	Nut, jam stop, 3/8"-16, with nylon
6	127912	4	Hex button head cap screw
7	72787	1	Warning label

**NOTE:**

Use the non-retracting footrail mounting frame assembly with the 715 Bed (P715/P718), 720 Bed (P720/P723), 815 Bed (P815), 820 Bed (P820/P822), Century Series Bed (P835/P837), Century+™ Bed (P1400), and Patient Care Bed (P8200/P8350).

## COMposer® Communication System Hardware—Advanta™ Bed, Advance® Series Bed, and Advance® 2000 Bed (Headrails Only)

**Figure 1-23. COMposer® Communication System Hardware—Advanta™ Bed, Advance® Series Bed, and Advance® 2000 Bed (Headrails Only)**



**Table 1-24. COMposer® Communication System Hardware—Advanta™ Bed, Advance® Series Bed, and Advance® 2000 Bed (Headrails Only)**

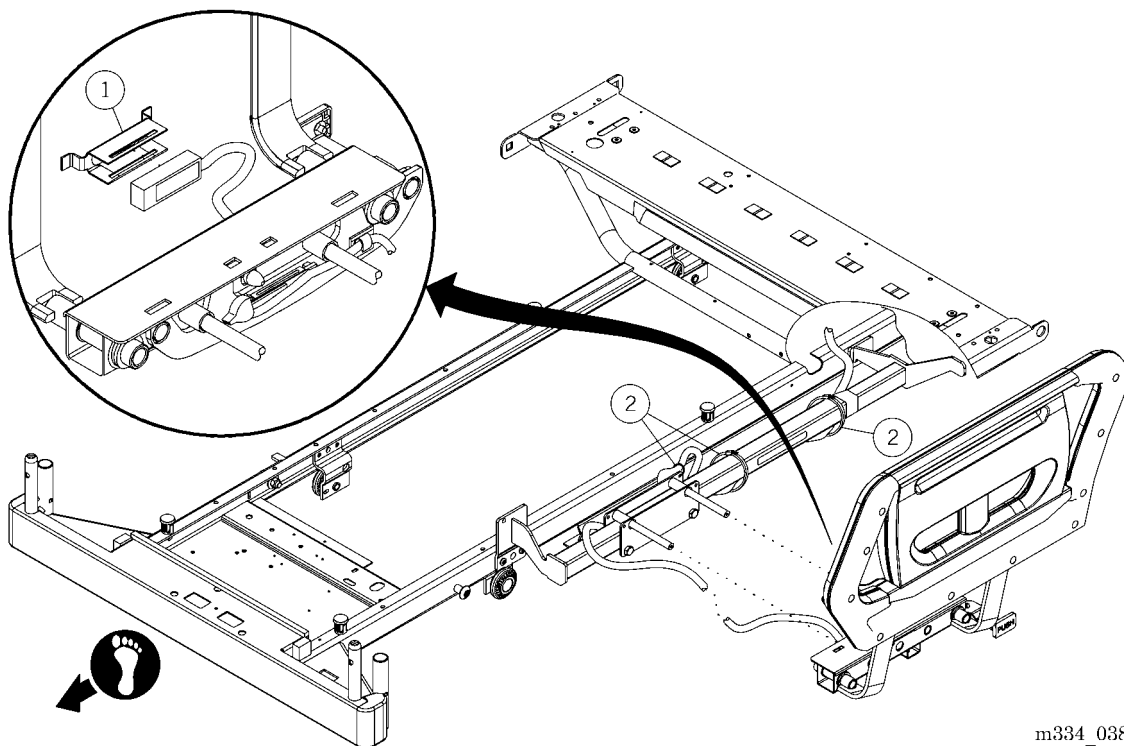
Item Number	Part Number	Quantity	Description
1	127378	1	Mount, wire
2	14450	1	Small cable tie

**NOTE:**

Use the COMposer® Communication System hardware with the Advanta™ Bed, Advance® Series Bed, and Advance® 2000 Bed **only**.

## COMposer® Communication System Hardware—Advanta™ Bed, Advance® Series Bed, and Advance® 2000 Bed (Footrails Only)

**Figure 1-24. COMposer® Communication System Hardware—Advanta™ Bed, Advance® Series Bed, and Advance® 2000 Bed (Footrails Only)**



**Table 1-25. COMposer® Communication System Hardware—Advanta™ Bed, Advance® Series Bed, and Advance® 2000 Bed (Footrails Only)**

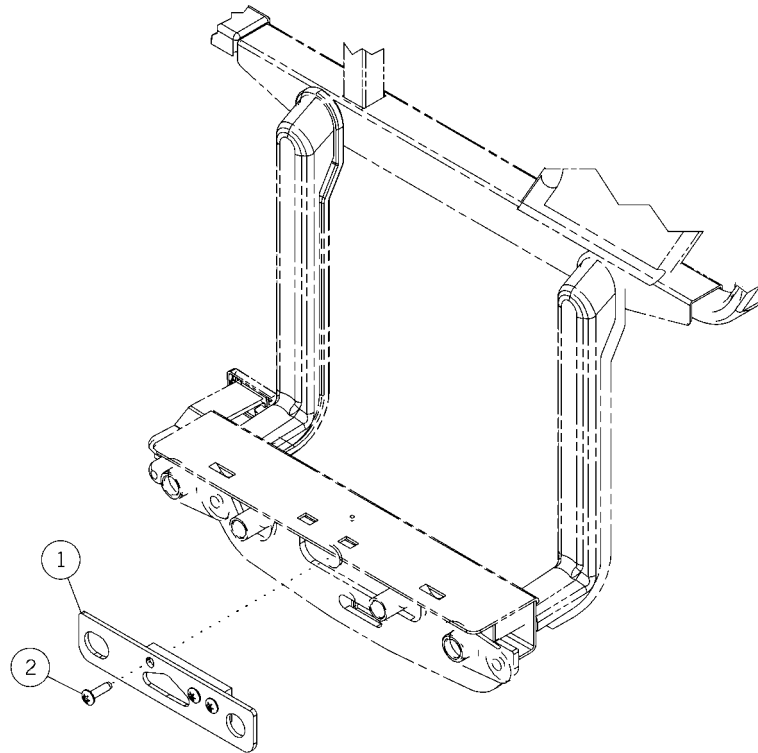
Item Number	Part Number	Quantity	Description
1	45093	2	Bracket, siderail switch
2	19124	12	Cable tie (8" long)

**NOTE:**

Use the COMposer® Communication System hardware with the Advanta™ Bed, Advance® Series Bed, and Advance® 2000 Bed **only**.

## Plate-Style Siderail Stop

Figure 1-25. Plate-Style Siderail Stop



m334\_030

Table 1-26. Plate-Style Siderail Stop

Item Number	Part Number	Quantity	Description
1	126782	1	Siderail stop—side one (rh)
	126783	1	Siderail stop—side two (lh)
2	72499	2	Screw

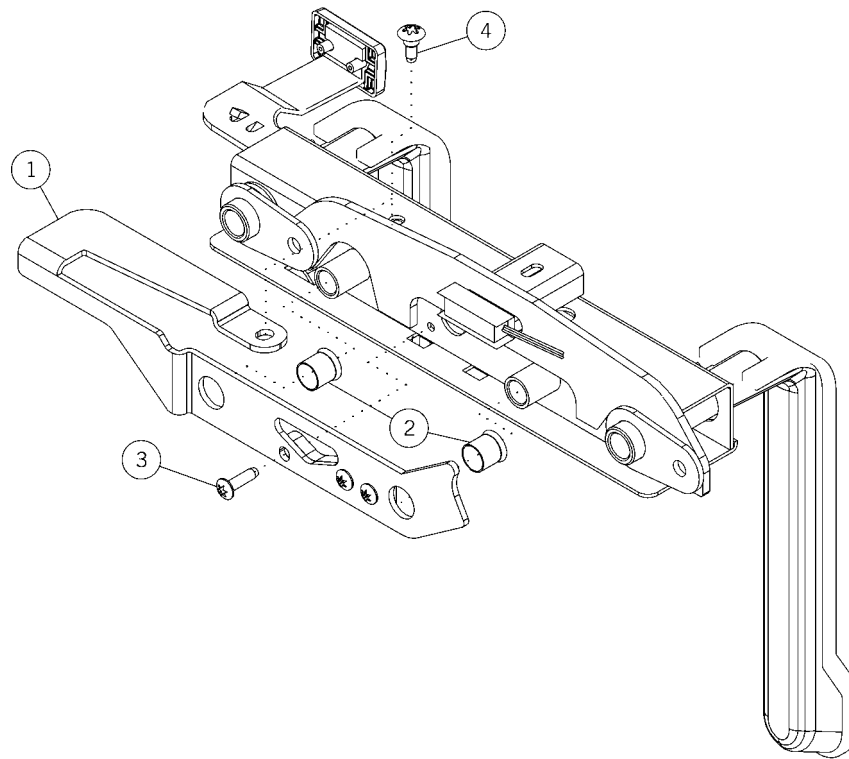
**NOTE:**

Use the plate-style siderail stop on the **headrails** of the Resident® LTC Bed (P870) and the **footrails** of all other beds.

---

## Headrail Stop Assembly

Figure 1-26. Headrail Stop Assembly



m334\_036

Table 1-27. Headrail Stop Assembly

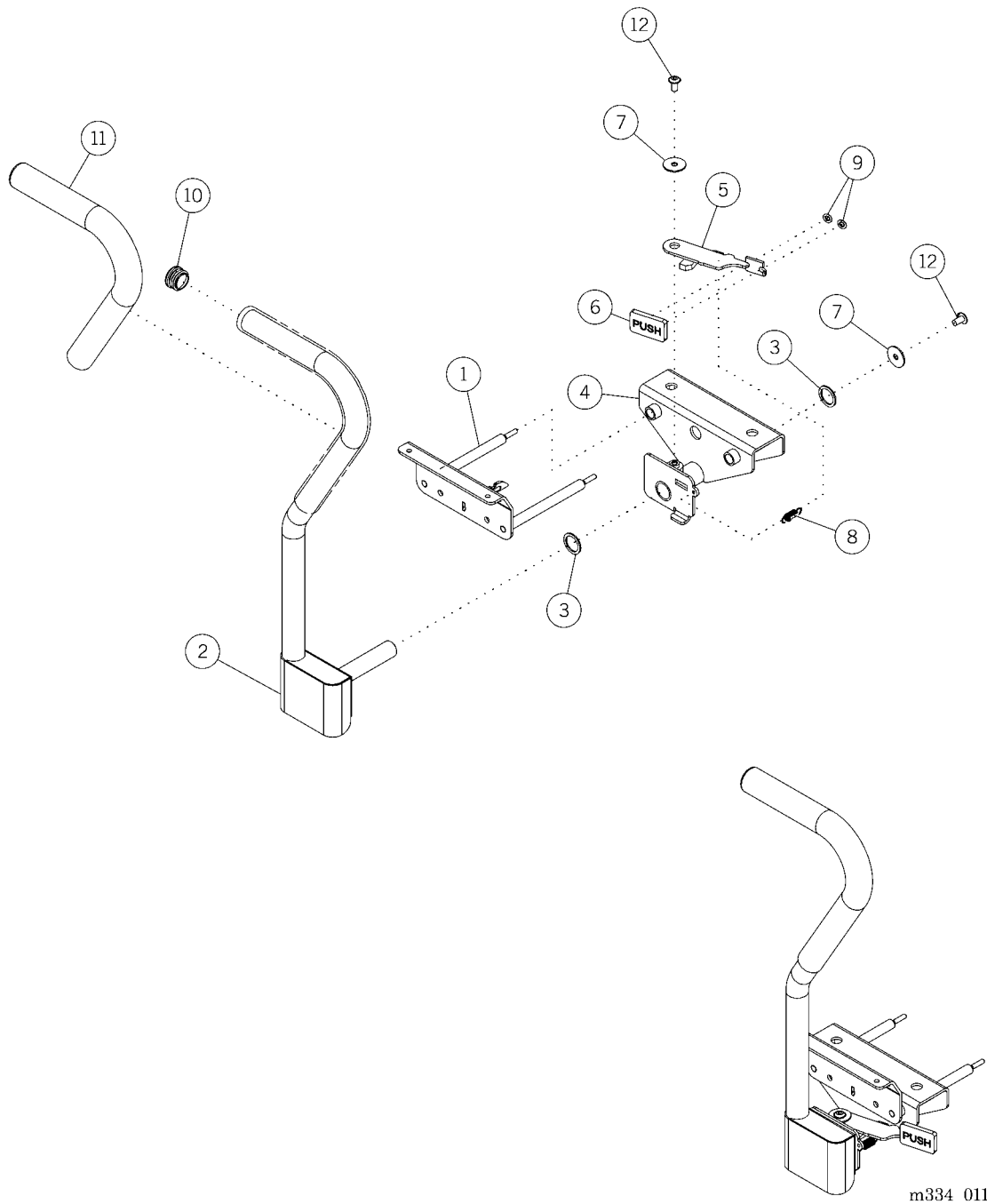
Item Number	Part Number	Quantity	Description
1	126946	1	Left headrail stop assembly (Advanta™ Bed <b>only</b> )
	126947	1	Right headrail stop assembly (Advanta™ Bed <b>only</b> )
	127345	1	Left headrail stop assembly
	127340	1	Right headrail stop assembly
2	127343	2	Sleeve, tube, 9/16" (for units with 9/16" slider tubes only)
3	72499	1	Screw, #10-32 x ¾", self-tapping
4	126950	1	Screw

**NOTE:**

Use the headrail stop assembly with all beds **except** the Resident® LTC Bed (P870) and Resident® Low Bed (P872).

## Assist Bar Assembly

Figure 1-27. Assist Bar Assembly





**Table 1-28. Assist Bar Assembly**

Item Number	Part Number	Quantity	Description
1	SA1672	1	Slide bracket, screws
2	72335	1	Assist bar handle, latch release (lh, taupe)
	71892	1	Assist bar handle, latch release (lh, light neutral)
	72338	1	Assist bar handle, latch release (rh, taupe)
	71893	1	Assist bar handle, latch release (rh, light neutral)
3	72747	2	Washer—plastic
4	71888	1	Support bracket weldment, lh, plated
	70556	1	Support bracket weldment, rh, plated
5	71889	1	Release handle weldment, lh, plated
	70550	1	Release handle weldment, rh, plated
6	19562	1	Latch cover (package of 10)
7	3869	2	Washer, flat
8	72158	1	Spring, extension
9	17291	2	Push nut (package of 10)
10	45642	1	Ribbed insert
11	46395	1	Sleeve
12	127368	2	Screw, Torx® <sup>a</sup> , plated

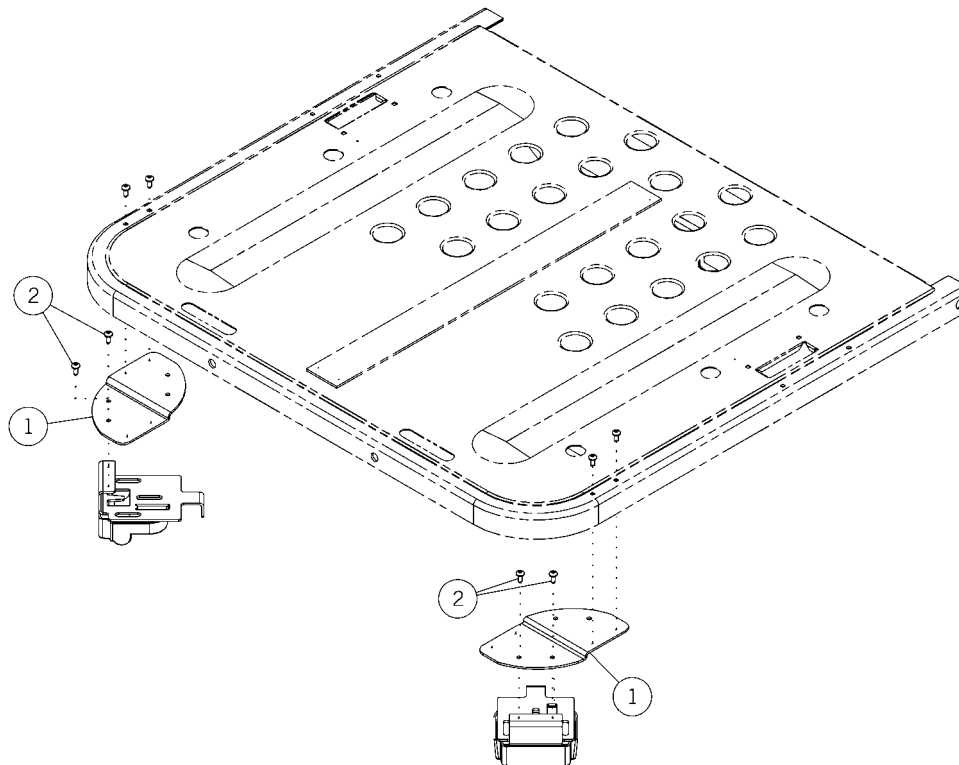
a. Torx® is a registered trademark of Textron, Inc.

**NOTE:**

Use the assist bar assembly with the 425 Bed (P425/P426), Century Series Bed (P835/P837), Centra Bed (P850/P852), Centra II Bed (P1050/P1052/P1060/P1062/P1063/P1064), Century+™ Bed (P1400), Patient Care Bed (P8200/P8350), and Retractable Bed (P8400/P8500).

## CPR Relocation Assembly

Figure 1-28. CPR Relocation Assembly



m334\_010

Table 1-29. CPR Relocation Assembly

Item Number	Part Number	Quantity	Description
1	72509	2	CPR relocation bracket, light neutral
2	44489	4	Screw, Torx® <sup>a</sup>

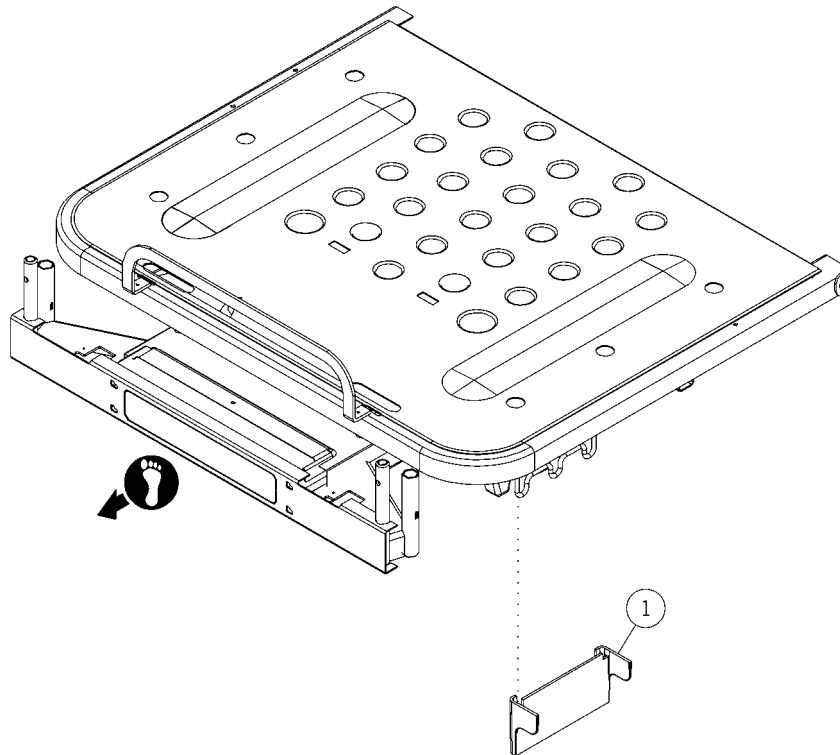
a. Torx® is a registered trademark of Textron, Inc.

### NOTE:

Use the CPR relocation assembly with the Advanta™ Bed, Advance® Series Bed, Advance® 2000 Bed, and Century+™ Bed **only**.

## Drainage Bag Holder Disabler—Advanta™ Bed

Figure 1-29. Drainage Bag Holder Disabler—Advanta™ Bed



m334\_040

Table 1-30. Drainage Bag Holder Disabler—Advanta™ Bed

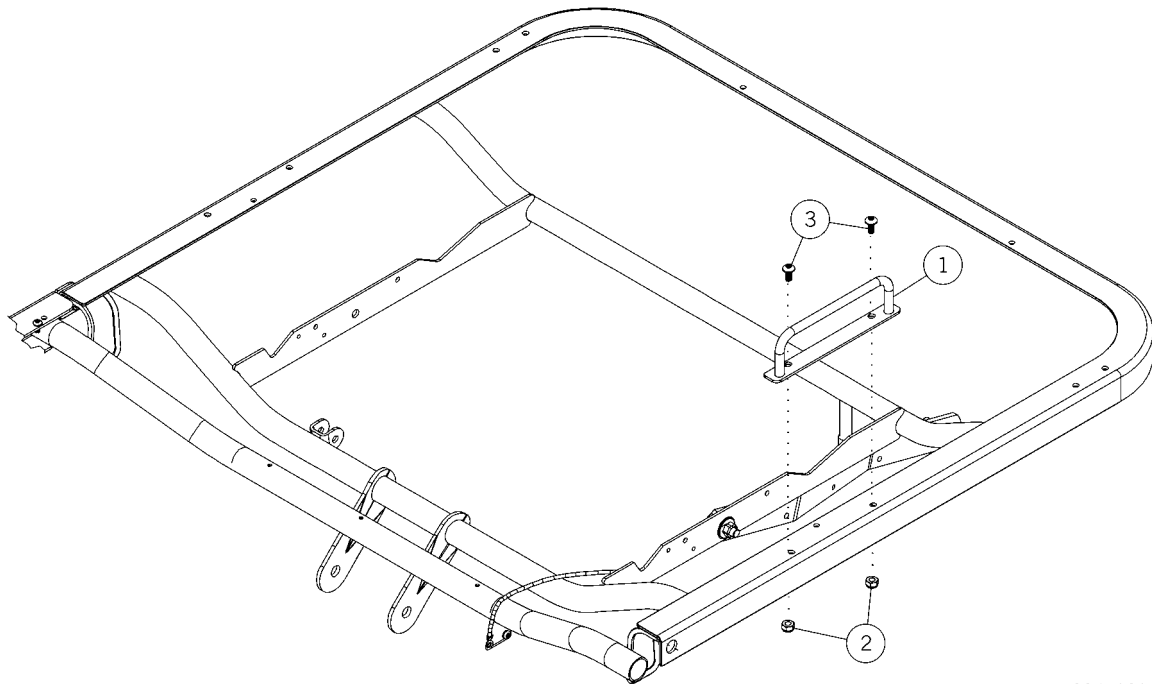
Item Number	Part Number	Quantity	Description
1	128750	2	Disabler—drainage bag

**NOTE:**

Use the drainage bag holder disabler with the Advanta™ Bed **only**.

## Mattress Stop

Figure 1-30. Mattress Stop



m334\_039

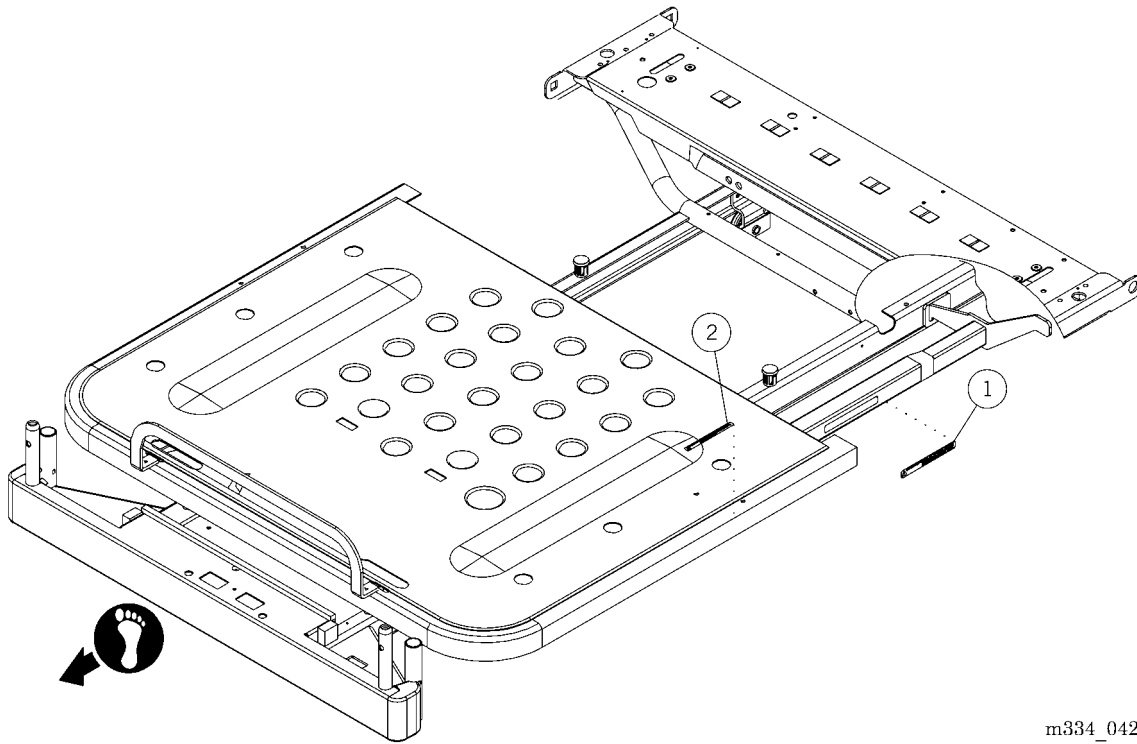
Table 1-31. Mattress Stop

Item Number	Part Number	Quantity	Description
1	12872933	1	Mattress stop—taupe
	12872948	1	Mattress stop—light neutral
2	4435	2	Locknut (package of 10)
3	43880	2	Torx® <sup>a</sup> pan head screw

a. Torx® is a registered trademark of Textron, Inc.

## Labels

**Figure 1-31. Labels**



m334\_042

**Table 1-32. Labels**

Item Number	Part Number	Quantity	Description
1	72787	2	Warning label
2	72861	2	Caution label

**NOTES:**

---