

Installation Instructions

Supreme Air LV **BENCH FUME HOOD** with Auto-return Sash

LV05

S T Y L E

Fume Hoods

48" - 60" - 72" - 84" - 96"

Supreme Air LV Bench Hood

Fume Hood w/Auto-return Sash

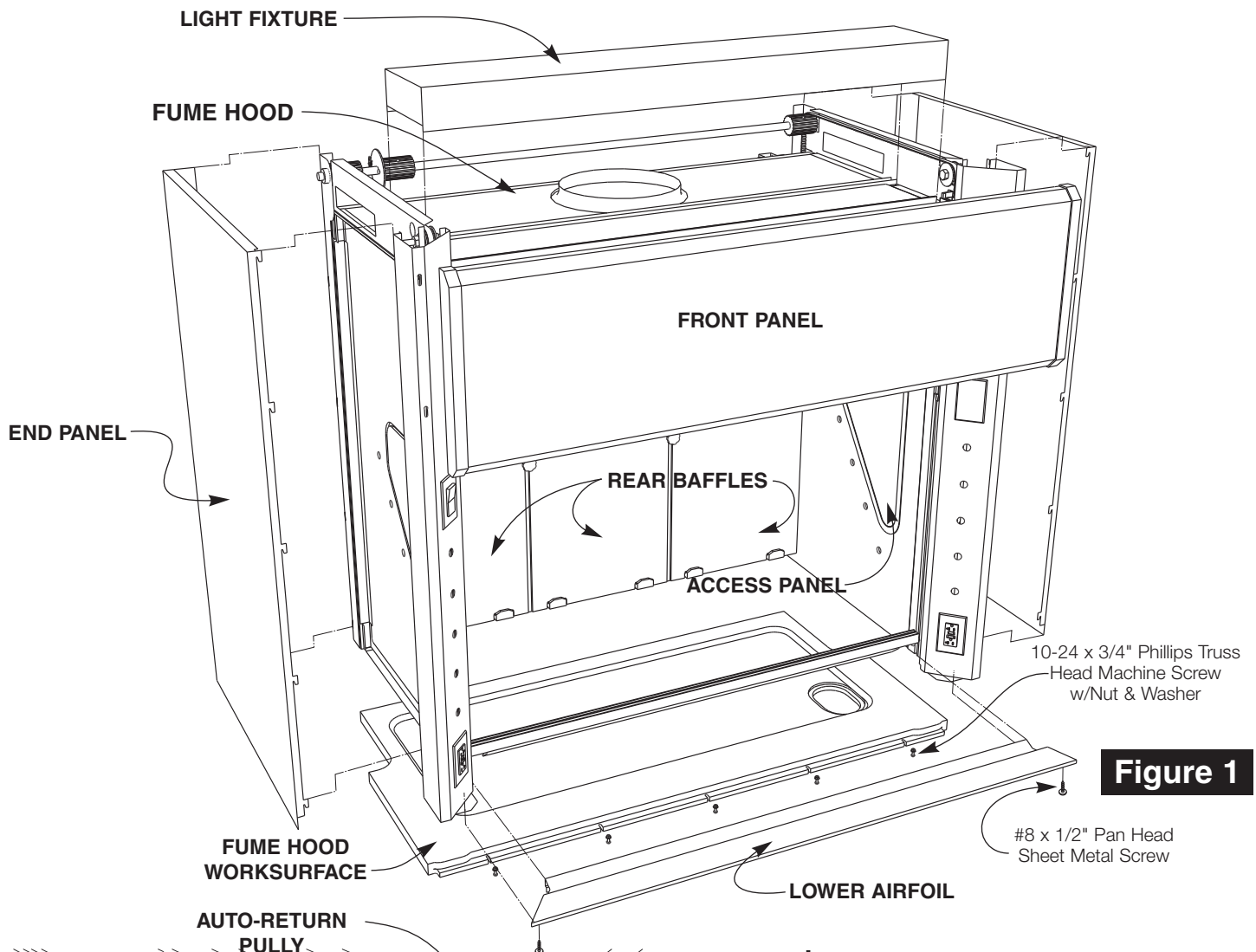


Figure 1

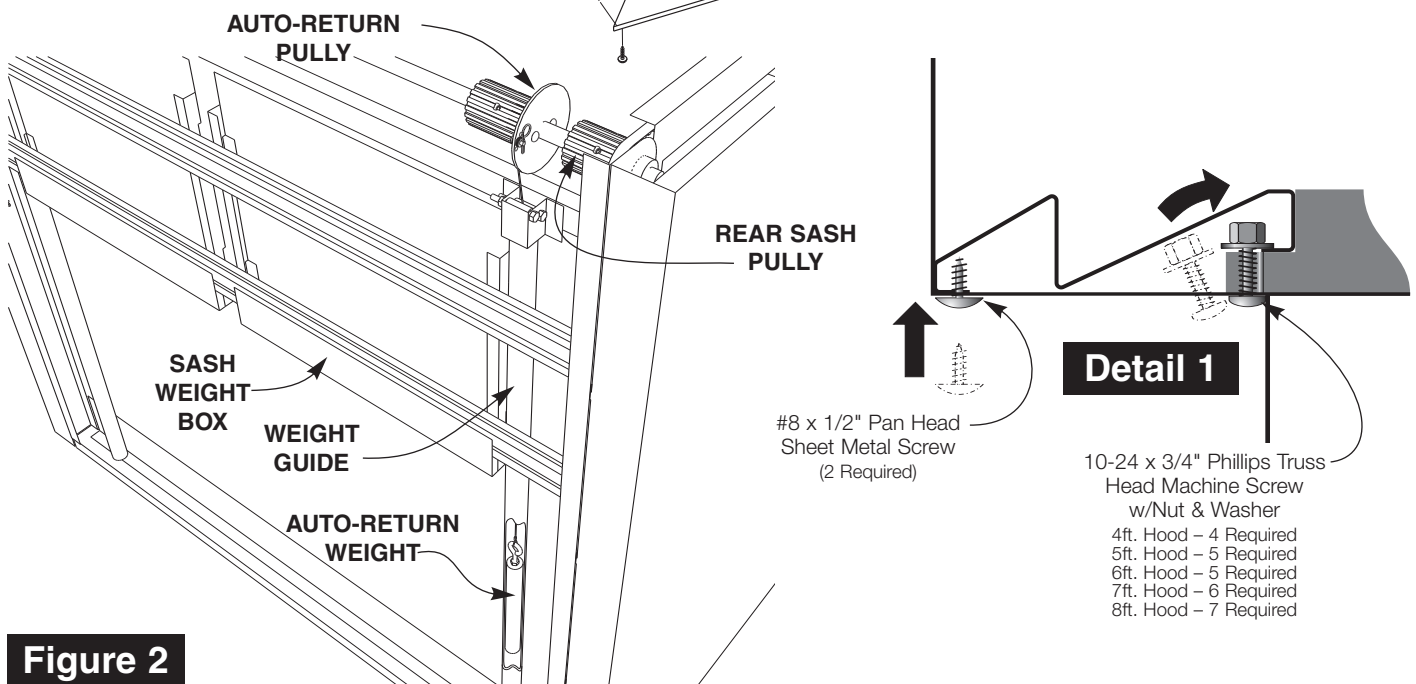


Figure 2

Supreme Air LV Bench Hood

Fume Hood w/Auto-return Sash

Packing List

On Pallet Fume Hood
Hardware Package (taped to side of hood)
Lower Airfoil (on top of hood)

Hardware Package
(4-7) 10-24 x 3/4" Phillips Truss Head Machine Screw
see detail 1 with Nut and Flat Washer
(2) #8 x 1/2" Sheet Metal Screws
(1) Installation Instructions

NOTICE Fume Hood Worksurface is packaged separately.

Preparation

1. Place, level, and install the **Base Unit Assembly** that will support the **Fume Hood** as shown on page 4.
2. Attach the **Fume Hood Worksurface** to the **Base Unit Assembly** at the corners using epoxy cement or similar adhesive.

NOTICE Worksurface should be centered on units and overhang the front by 1/2". Worksurface must be level. Shim as needed. Top should extend all the way to rear wall.

3. Uncrate **Fume Hood** taking care to sort and inventory all parts.
4. Remove **End Panels** from **Fume Hood** (by lifting up and out) and remove screws anchoring **Weight Box** to **Fume Hood**.
5. Remove all packing from **Fume Hood** and any tape holding parts in place for shipping.

NOTICE Fume Hood is packed fully assembled except for **Lower Airfoil**. The **Top Front Panel**, may be removed (by lifting up and out) to fit through narrow doorways and/or for easier access.

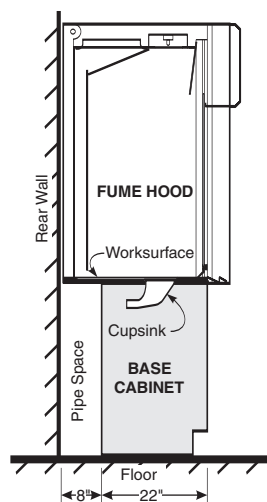
NOTICE Generally electrical fixtures and plumbing fittings are shipped installed, but may be shipped loose depending on job requirements. Fittings may also be pre-wired and/or pre-piped. Fixtures are not shown on assembly diagram as quantities and locations vary to meet individual requirements.

Installation

6. Check that **Sash Belts** are properly routed over front pulleys, and engage rear pulley sprockets.
 7. Check sash auto-sash return height and adjust as needed. (See Auto-return Adjustment Instructions on page 5)
- ⚠ CAUTION** Handle Frameless Sash with care - Laminated Safety Glass will crack if abused.
9. Using as many workers as needed, lift assembled **Fume Hood** and place on leveled **Worksurface** being careful not to spread bottom of hood. Make sure hood is pushed back as far as possible and centered on **Base Unit Assembly**. Check **End Panels** for plumb and square.
 10. Attach **Lower Airfoil** to the **Worksurface** and **Fume Hood** using the included hardware as shown in Detail 1. Check that **Lower Airfoil** is straight and level.
 11. Coordinate connections of service fittings, electrical fixtures, and ductwork with the respective trades (i.e. mechanical, electrical, HVAC). After connections are complete, replace interior **Access Panels**, if removed, and the exterior **End Panels**.
 12. Check **Sash** again for level, smooth movement, and auto-return. Adjust as needed.
To level, loosen the two (2) set screws on one of the rear **Sash Pulleys** (see Figure 2), level sash, then retighten set screws.
 13. Inspect the complete installation, remove any dust, dirt, or other debris. Check all moving parts for proper operation, and adjust or lubricate as necessary.

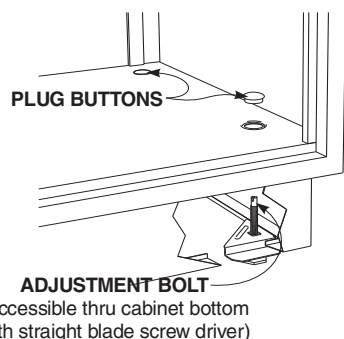
NOTICE **Rear Baffles** may be removed for cleaning by removing the two Baffle StandoffKnobs and lifting up and out on the baffle panels.

Base Unit Assembly for Bench Type Fume Hoods



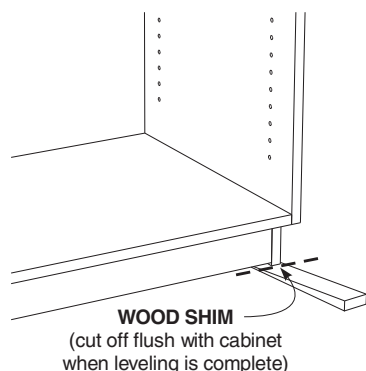
Detail 1

Fume Hood Base Cabinet Location



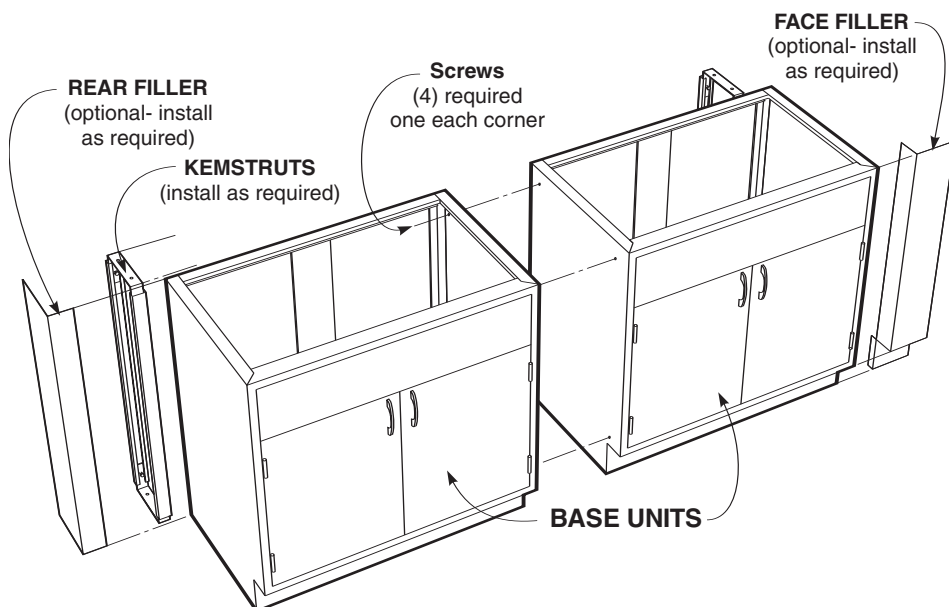
Detail 2S

Steel base cabinets are leveled using the adjustment bolts located in the cabinet base.



Detail 2W

Wood base cabinets are leveled using wooden shims, available at any lumber yard or home center.



Preparation

1. Locate and mark hood and base cabinet locations making sure area is clear of obstructions and debris. Be sure all conduit, duct work and service lines have been run and are ready for final connections.

NOTICE Kemstruts and other pipe or worksurface supports should be installed before the base cabinets are moved into place.

2. Locate the high point of the floor within the area that the base cabinets will be installed.

Installation

3. Starting with the base cabinet on the highest point on the floor, move the first cabinet into location as shown in Detail 1 and according to project drawings.
4. Using a four foot carpenters level, level the cabinet; side-to-side, front-to-back, and diagonally. (see Detail 2S and 2W to the left for leveling methods)

NOTICE Blocks or cleats may be used to fasten cabinets to floor or walls to insure cabinets don't move during installation.

5. Move the next cabinet into position and clamp it to the first cabinet, making sure that the cabinet faces and tops are flush.
6. Level the cabinet, as in step 4.
7. Using four (4) screws, as listed below, fasten the two cabinets together at all four corners of the end panels.
Use #8 x 1-1/4" Flat Head screws for wood cabinets.
Use #8 x 1/2" Truss Head Sheet Metal screws for steel cabinets.
(pilot holes must be drilled in the steel cabinets before driving screws)

8. Complete hood installation and all mechanical connections before installing any required fillers or scribes.

NOTICE It is recommended that the polyethylene liner be removed from Acid Storage cabinets during installation to allow fastening to adjacent cabinets and ease plumbing connections. Be sure to replace when installation is complete.

Supreme Air LV Bench Hood

Fume Hood w/Auto-return Sash

Auto-return Adjustment Instructions

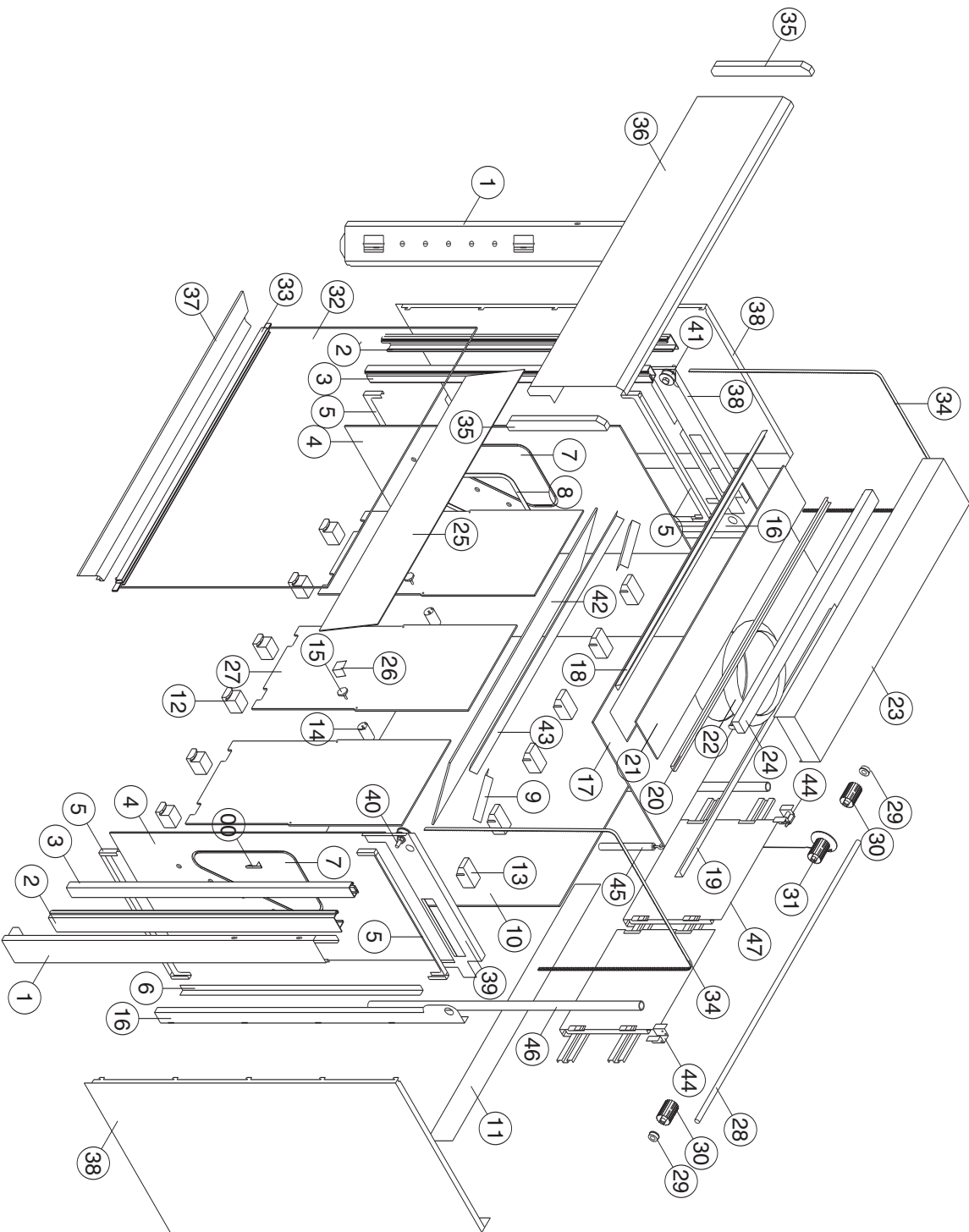
1. Set sash at specified maximum safe open position (factory default is 18") and secure in place.
2. Loosen the (2) two set screws on the **Auto-return Pulley**.
3. Without rotating the **Axle**, rotate the **Auto-return Pulley** until the **Auto-return Weight** is at its lowest point.
4. Tighten the (2) two set screws on the **Auto-return Pulley** and release the sash.
5. Test the system.

Troubleshooting

If the sash is raised above the maximum safe open position and, when released, it does not return to the maximum safe open position, then remove weight from the **Sash Weight Box** until the system works correctly. This increases the ratio of the weight between the auto-return weight and the sash weight.

If the sash is below the maximum safe open position and, when released, it rises to the maximum safe open position, then remove weight from the **Sash Weight Box** until the system works correctly. This decreases the overall counterweight.

In either of the above situations, the weight should be removed in small increments. If it is necessary to remove enough weight so that the sash closes completely, it may be necessary to add to the **Auto-return Weight**. This can be done by removing the eyebolt from the top of the **Auto-return Weight**, adding washers to the stem of the eyebolt, and reconnecting it.



PRT	QTY	DESCRIPTION
47	1	SASH WEIGHT ASSY
46	2	PVC WEIGHT GUIDE
45	1	RETURN WEIGHT ASSY
44	2	L&R RETURN WEIGHT BRACKET ASSY
43	1	SLOPING BAFFLE REINF. ANGLE
42	1	SLOPING BAFFLE
41	2	FRONT PULLEY
40	2	PULLEY BOLT, NUT & WASHER
39	2	L&R FRONT PULLEY BRACKET
38	2	END PANEL
37	1	LOWER AIRFOIL
36	1	FRONT PANEL
35	2	L&R FRONT PANEL CAP
34	2	DRIVE BELT
33	1	SASH HANDLE
32	1	SASH GLASS
31	1	RETURN WEIGHT PULLEY ASSY
30	2	REAR DRIVE PULLEY
29	2	DRIVE SHAFT BEARING
28	1	DRIVE SHAFT
27	3	REAR BAFFLE
26	2	BYPASS PANEL ANGLE
25	1	HOOD LINER BYPASS PANEL
24	1	T5 LIGHT FIXTURE & TUBE
23	1	LIGHT COVER
22	1	DUCT COLLAR
21	1	TEMPERED LIGHT GLASS
20	1	LIGHT SUPPORT CHANNEL
19	1	TOP BACK ANGLE
18	1	TOP FRONT ANGLE
17	1	HOOD LINER TOP
16	2	L&R BACK CORNER POST
15	2	BAFFLE STANDOFF KNOB
14	2	BAFFLE STANDOFF
13	6	UPPER BAFFLE SUPPORT
12	6	LOWER BAFFLE SUPPORT
11	1	BACK BOTTOM ANGLE
10	1	HOOD LINER BACK
9	2	SLOPING BAFFLE ANGLE
8	2	L&R ACCESS PANEL GASKET
7	2	L&R ACCESS PANEL
6	2	VERTICAL FRAME ANGLE
5	2	HORIZONTAL FRAME ANGLE
4	2	L&R HOOD LINER END PANEL
3	2	PVC SASH TRACK INSERT
2	2	ALUMINUM SASH TRACK
1	2	L&R FACIA

LVO5 Fume Hood - Parts Listing