

PART LIST MANUAL

PatientMate®, PatientMate® Jr., and P630 Overbed Tables From Hill-Rom



Product No. P630, P631, and P632

For Parts or Technical Assistance
USA (800) 445-3720 Canada (800) 267-2337
International: Contact your distributor.

man279ra

PatientMate®[®], PatientMate®[®] Jr., and P630 Overbed Tables Parts List Manual

Revisions

Revision Letter	Pages Affected	Date
Original Issue		December, 2000
A	All	September, 2003

man279ra

© 2003 by Hill-Rom Services, Inc. ALL RIGHTS RESERVED.

No part of this text shall be reproduced or transmitted in any form or by any means, electronic or mechanical, including photocopying, recording, or by any information or retrieval system without written permission from Hill-Rom Services, Inc. (Hill-Rom).

The information in this manual is confidential and may not be disclosed to third parties without the prior written consent of Hill-Rom.

Second Edition

First Printing 2000

Printed in the USA

Hill-Rom® is a registered trademark of Hill-Rom Services, Inc.

Loctite® is a registered trademark of Loctite Corporation.

PatientMate® is a registered trademark of Hill-Rom Services, Inc.

The information contained in this manual is subject to change without notice. Hill-Rom makes no commitment to update or keep current, the information contained in this manual.

The only product warranty intended by Hill-Rom is the express, written warranty accompanying the bill of sale to the original purchaser. Hill-Rom makes no other warranty, express or implied, and in particular, makes no warranty of merchantability or fitness for a particular purpose.

Additional copies of this manual can be obtained from Hill-Rom.

To order additional copies of this manual, call (800) 445-3720, and place a parts order for part number man279ra.

Table of Contents

Chapter 1: Operation, Specifications, and Cleaning

Purpose	1 - 2
Audience	1 - 2
Organization	1 - 2
Chapter 1: Operation, Specifications, and Cleaning	1 - 2
Chapter 2: Removal, Replacement, and Adjustment Procedures	1 - 2
Chapter 3: Parts List	1 - 2
Operation	1 - 3
Hilow Function	1 - 3
Food Tray Release	1 - 4
Flip-up Mirror Operation	1 - 5
Technical Specifications	1 - 6
Preventive Maintenance	1 - 9
Cleaning	1 - 10
Steam Cleaning	1 - 10
Cleaning Hard to Clean Spots	1 - 10
Disinfecting	1 - 10

Chapter 2: Removal, Replacement, and Adjustment Procedures

Freeing Frozen Tops	2 - 5
Lubrication	2 - 6
Releasing a Jammed Top and Food Service Tray	2 - 7
Flip-up Mirror	2 - 8
Removal	2 - 8
Replacement	2 - 9
Sliding Mirror	2 - 10
Removal	2 - 10
Replacement	2 - 10

Table of Contents

P630 Overbed Table Top	2 - 12
Removal	2 - 12
Replacement	2 - 13
PatientMate® and PatientMate® Jr. Overbed Table Top.....	2 - 14
Removal	2 - 14
Replacement	2 - 15
Food Tray	2 - 17
Removal	2 - 17
Replacement	2 - 18
Cam Ramp Assembly	2 - 19
Removal	2 - 19
Replacement	2 - 19
Pivot Slide.....	2 - 21
Removal	2 - 21
Replacement	2 - 21
Vanity Tray.....	2 - 23
Removal	2 - 23
Replacement	2 - 24
Top Frame.....	2 - 25
Removal	2 - 25
Replacement	2 - 26
Gas Spring Assembly	2 - 28
Removal	2 - 28
Replacement	2 - 29
Base Frame Cover.....	2 - 31
Removal	2 - 31
Replacement	2 - 32
Caster	2 - 34
Removal	2 - 34
Replacement	2 - 35
PatientMate® Overbed Table Lower Saddle Tray	2 - 36

Removal	2 - 36
Replacement	2 - 37
PatientMate® Overbed Table Upper Saddle Tray	2 - 38
Removal	2 - 38
Replacement	2 - 41
Top Frame and Base Frame Assembly Play Adjustment	2 - 43
Adjustment	2 - 43
Up/Down Release Rod Handle	2 - 46
Removal	2 - 46
Replacement	2 - 46
Base Frame Cover (New Style Base)	2 - 48
Removal	2 - 48
Replacement	2 - 49
Caster (New Style Base)	2 - 51
Removal	2 - 51
Replacement	2 - 51
Top Frame and Base Frame Assembly Play Adjustment (New Style Base)	2 - 52
Adjustment	2 - 52

Chapter 3: Parts List

Warranty	3 - 3
Service Parts Ordering	3 - 5
Exchange Policy	3 - 7
In-Warranty Exchanges	3 - 7
Out-of-Warranty Exchanges	3 - 7
Recommended Spare Parts	3 - 8
P630 Overbed Table	3 - 10
PatientMate® Jr. Overbed Table (P631) (Sheet 1 of 2)	3 - 14
PatientMate® Jr. Overbed Table (P631) (Sheet 2 of 2)	3 - 16
PatientMate® Overbed Table (P632) (Sheet 1 of 2)	3 - 20
PatientMate® Overbed Table (P632) (Sheet 2 of 2)	3 - 22
Base Frame (New Style Base)	3 - 26

Table of Contents

NOTES:

Chapter 1

Operation, Specifications, and Cleaning

Chapter Contents

Purpose	1 - 2
Audience	1 - 2
Organization	1 - 2
Chapter 1: Operation, Specifications, and Cleaning	1 - 2
Chapter 2: Removal, Replacement, and Adjustment Procedures	1 - 2
Chapter 3: Parts List	1 - 2
Operation	1 - 3
Hilow Function	1 - 3
Food Tray Release	1 - 4
Flip-up Mirror Operation	1 - 5
Technical Specifications	1 - 6
Preventive Maintenance	1 - 9
Cleaning	1 - 10
Steam Cleaning	1 - 10
Cleaning Hard to Clean Spots	1 - 10
Disinfecting	1 - 10

Purpose

This manual provides requirements for the PatientMate®, PatientMate® Jr., and P630 Overbed Tables normal operation and maintenance. It also includes parts lists (in chapter 3) for ordering replacement components.

Audience

This manual is intended for use by only facility-authorized personnel. Failure to observe this restriction can result in severe injury to people and serious damage to equipment.

Organization

This manual contains three chapters.

Chapter 1: Operation, Specifications, and Cleaning

This chapter contains operating instructions, product specifications, preventive maintenance, and cleaning instructions for this product.

Chapter 2: Removal, Replacement, and Adjustment Procedures

This chapter contains detailed maintenance procedures.

Chapter 3: Parts List

This chapter contains the warranty, part-ordering procedure, and illustrated parts lists.

Operation

Hilow Function

To **raise** the table, perform the following:

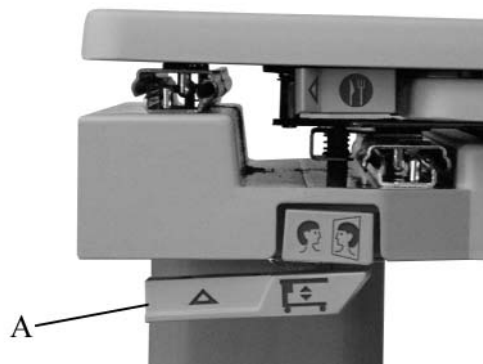
Pull up on the table top to the desired height.

NOTE:

The Hilow button should not be used to raise the table.

1. To **lower** the table, perform the following:
 - a. Lift up on one or both of the Hilow buttons (A) (see figure 1-1 on page 1-3).
 - b. Push down on the table top until the desired height is reached.
 - c. Release the Hilow button at the desired height.

Figure 1-1. Hi-Lo Function

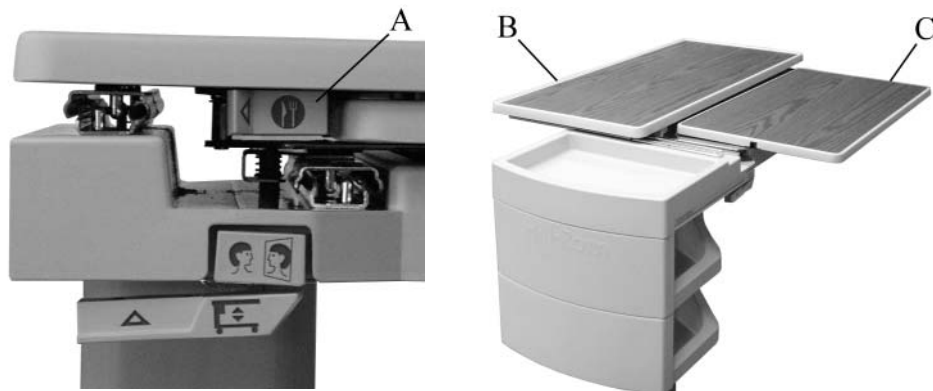


m279a036

Food Tray Release

1. To **open** the food tray, perform the following:
 - a. Press the Food Tray release (A) on either side of the top (B) (see figure 1-2 on page 1-4).
 - b. Push the top (B) away from the patient (the food tray and top will slide in opposite directions).
 - c. Position the food tray (C) as needed.

Figure 1-2. Food Tray Operation



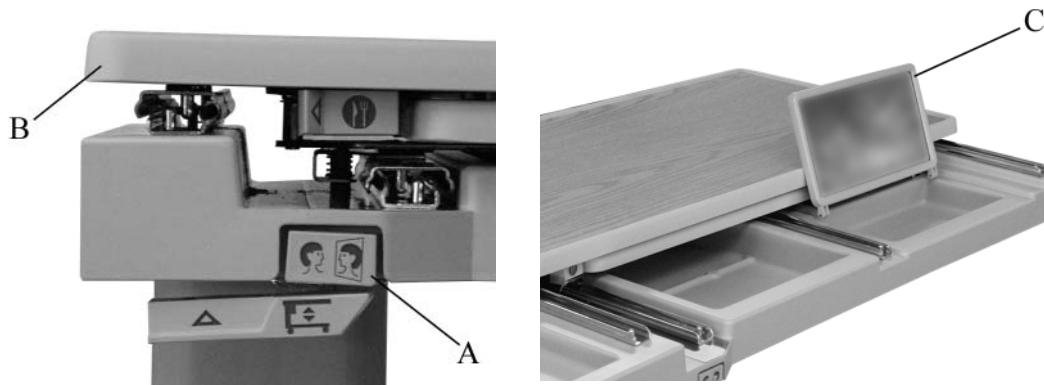
m279a037
m279a040

2. To **close** the food tray, perform the following:
 - a. Press the Food Tray release (A) on the **patient's** side.
 - b. Slide the top (B) and food tray (C) together until they lock in the center position.

Flip-up Mirror Operation

1. To **open** the mirror, perform the following:
 - a. Press the Vanity Release button (A) (see figure 1-3 on page 1-5).
 - b. Slide the top and food tray (B) to the opposite side of the mirror (C) wanting to be used.
 - c. Flip the mirror (C) to the up position.
2. To **stow** the mirror, perform the following:
 - a. Lower the mirror (C).
 - b. Slide the top and food tray (B) to the center of the table until it locks in place.

Figure 1-3. Vanity Tray Operation



m279a038
m279a039

Technical Specifications

Table 1. Model Identification

Model Number	Description
P630	Overbed Table
P631	PatientMate® Jr. Overbed Table
P632	PatientMate® Overbed Table

Table 2. Dimensions (see figure 1 on page 1-8)

Feature	Dimension
Maximum Length	
P630 and P631	37.5" (95.3 cm)
P632	44.5" (113 cm)
Top Width:	
P630	15" (38 cm)
P631 and P632 (top and food tray closed)	15" (38 cm)
P631 and P632 (top and food tray open)	30" (76 cm)
Base Width (old base)	19" (48 cm)
Base Width (new base)	20" (51 cm)
Product Weight (empty)	
P630	40 lb (18 kg) (old base) 47 lb (21 kg) (new base)
P631	58 lb (26 kg) (old base) 65 lb (29 kg) (new base)
P632	69 lb (31 kg) (old base) 76 lb (34 kg) (new base)
Underbed Clearance	3" (8 cm) (old base) 2" (5 cm) (new base)
Low Level Height	30" (76 cm)
High Level Height	46" (117 cm)

Table 3. Safe Working Loads

Feature	Range
Top	25 lb (11 kg)
Storage Baskets	15 lb (7 kg)
Total (includes top and storage baskets)	25 lb (11 kg)

Table 4. Environmental Conditions for Transport and Storage

Condition	Range
Temperature	-40°F to 158°F (-40°C to 70°C)
Relative Humidity	10% to 95% non-condensing

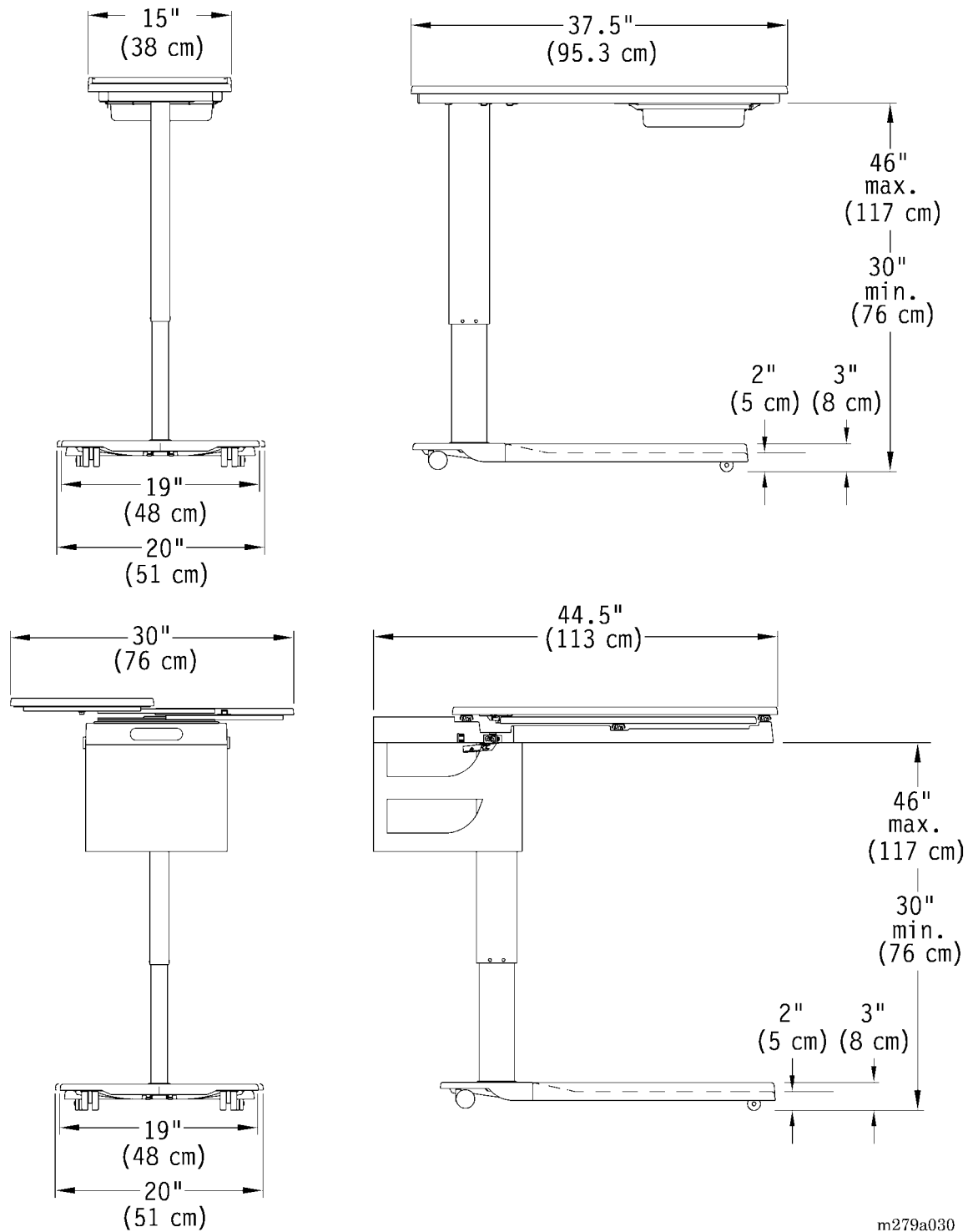
Table 5. Environmental Conditions for Use

Condition	Range
Temperature	59°F to 102°F (15°C to 39°C) ambient temperature
Relative Humidity Range	20% to 85% non-condensing

Table 6. Standards

Condition	Description
Flammability Compliance	
Storage trays and mirror frame	UL94, V-0
Base cover and rim foam	UL94, HB

Figure 1. Overbed Table Dimensions



Preventive Maintenance

There is no preventive maintenance required for this product. However, Hill-Rom recommends periodic function and cosmetic checks to ensure the overbed table remains in good working order.

Cleaning



WARNING:

Follow the product manufacturer's instructions. Failure to do so could result in personal injury or equipment damage.



CAUTION:

Do not use harsh cleansers/detergents, such as scouring pads and heavy duty grease removers, or solvents, such as toluene, xylene, and acetone. Equipment damage could occur.

If there is no visible soilage with possible body fluids, Hill-Rom recommends that you clean the unit with a mild detergent and warm water. If disinfection is desired, you may use a combination cleanser/disinfectant as explained in “Disinfecting” on page 1-10

Steam Cleaning

Do not use any steam cleaning device on the unit. Excessive moisture can damage mechanisms in this unit.

Cleaning Hard to Clean Spots

To remove difficult spots or stains, Hill-Rom recommends that you use standard household cleansers and a soft-bristled brush. To loosen heavy, dried-on soil, you may first need to saturate the spot.

Disinfecting

When there is visible soilage and between patients, Hill-Rom recommends that you disinfect the unit with a tuberculocidal disinfectant. (For customers in the US, the disinfectant should be registered with the Environmental Protection Agency.)

Dilute and use the disinfectant according to the manufacturer's instructions.

Chapter 2

Removal, Replacement, and Adjustment Procedures

2

Chapter Contents

Freeing Frozen Tops	2 - 5
Lubrication	2 - 6
Releasing a Jammed Top and Food Service Tray.	2 - 7
Flip-up Mirror	2 - 8
Removal	2 - 8
Replacement	2 - 9
Sliding Mirror	2 - 10
Removal	2 - 10
Replacement	2 - 10
P630 Overbed Table Top	2 - 12
Removal	2 - 12
Replacement	2 - 13
PatientMate® and PatientMate® Jr. Overbed Table Top.	2 - 14
Removal	2 - 14
Replacement	2 - 15
Food Tray	2 - 17
Removal	2 - 17
Replacement	2 - 18
Cam Ramp Assembly	2 - 19
Removal	2 - 19
Replacement	2 - 19

Pivot Slide	2 - 21
Removal	2 - 21
Replacement	2 - 21
Vanity Tray	2 - 23
Removal	2 - 23
Replacement	2 - 24
Top Frame	2 - 25
Removal	2 - 25
Replacement	2 - 26
Gas Spring Assembly	2 - 28
Removal	2 - 28
Replacement	2 - 29
Base Frame Cover	2 - 31
Removal	2 - 31
Replacement	2 - 32
Caster	2 - 34
Removal	2 - 34
Replacement	2 - 35
PatientMate® Overbed Table Lower Saddle Tray	2 - 36
Removal	2 - 36
Replacement	2 - 37
PatientMate® Overbed Table Upper Saddle Tray	2 - 38
Removal	2 - 38
Replacement	2 - 41
Top Frame and Base Frame Assembly Play Adjustment	2 - 43
Adjustment	2 - 43
Up/Down Release Rod Handle	2 - 46
Removal	2 - 46
Replacement	2 - 46
Base Frame Cover (New Style Base)	2 - 48
Removal	2 - 48

Replacement	2 - 49
Caster (New Style Base)	2 - 51
Removal	2 - 51
Replacement	2 - 51
Top Frame and Base Frame Assembly Play Adjustment (New Style Base)	2 - 52
Adjustment	2 - 52

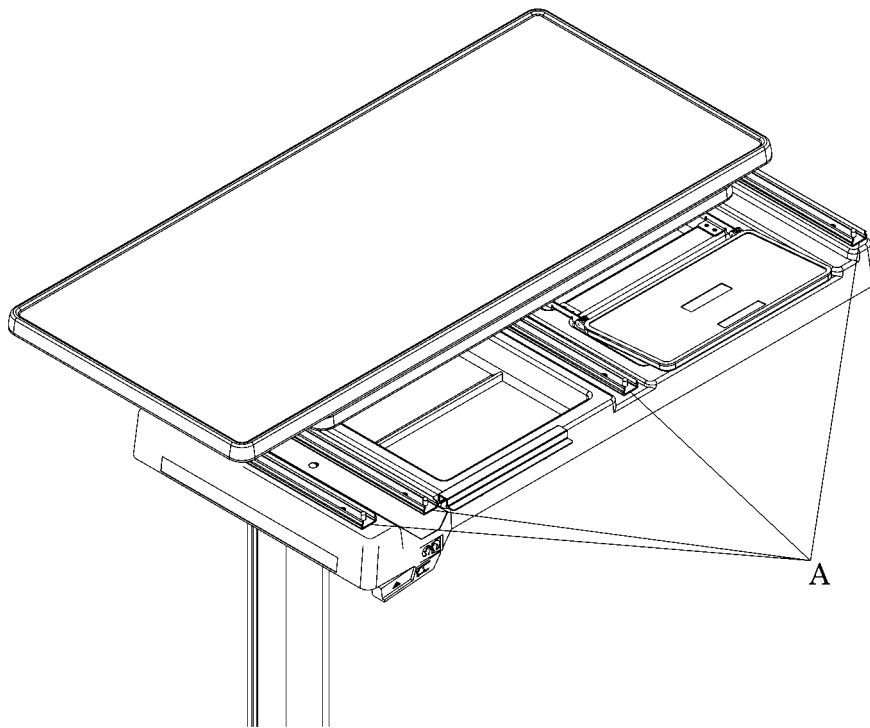
NOTES:

2.1 Freeing Frozen Tops

Tools required: Phillips head screwdriver

1. Press the *tray* button, and slide the tops apart sharply.
2. Check the tracks (A) for lubrication (see figure 2-1 on page 2-5).

Figure 2-1. Track Inspection



m279_007

3. Check the tracks (A) for attaching hardware that may have become loose and may be binding in the tracks. Using the Phillips head screwdriver, tighten any loose hardware located.
4. Check the tracks (A) for corrosion or damage. If damage or corrosion are located, replace the affected track.
5. If the tracks require lubrications, refer to procedure 2.2.
6. Once the tracks (A) have been replaced, lubricated, or hardware tightened, return the table to the normal operating position.

2.2 Lubrication

Tools required: Sanitary spray lubricant (P/N 44773101)
Rags

1. Press the *tray* button, and slide the tops apart.
2. Sparingly spray the tracks and release bar hole with the sanitary spray lubricant.
3. Using the rags, wipe any excess lubricant from the tracks.

NOTE:

There should only be a light film on the tracks. If there is puddling of lubricant at any place, then there is too much lubricant.

4. Close the table into the normal operating position.
5. Repeat steps 1 through 4 to the other half of the tracks for the table.
6. Open and close the table several times to distribute the lubricant evenly.

2.3 Releasing a Jammed Top and Food Service Tray

Tools required: None

1. Determine on which side of the base the top and food service tray are jammed.
2. Push the *tray* button opposite (toward the center of the table) of the side the top and food service tray are stuck.
3. Slide the top and food service tray toward the center of the table.
4. Recheck the operation of the food service tray.

2

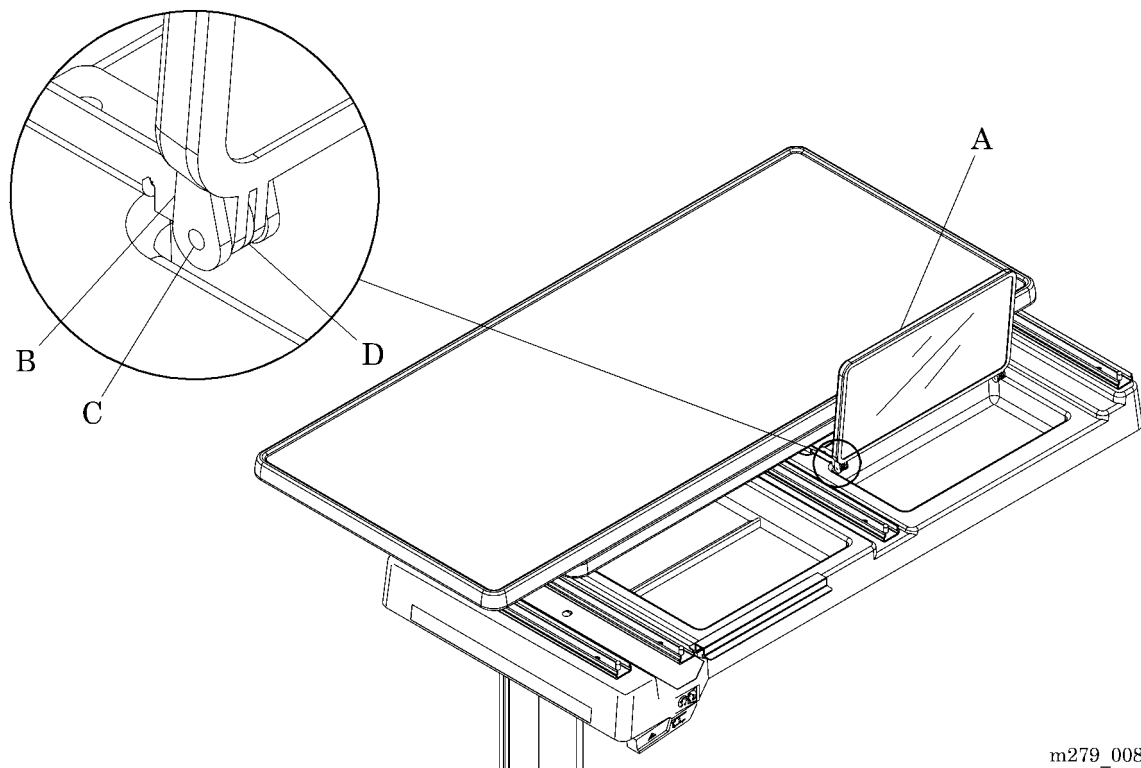
2.4 Flip-up Mirror

Tools required:	Small locking pliers	Small punch
	Hammer	Small C-clamp

Removal

1. Press the Vanity Release button and slide both the top and food service tray to the opposite side of the mirror (A) being replaced (see figure 2-2 on page 2-8).

Figure 2-2. Flip-up Mirror Replacement



m279_008

2. Flip the mirror (A) to the up position.
3. Using the locking pliers or small C-clamp, clamp the legs of the mirror (A) to the legs of the mirror base (D).
4. Using the punch and hammer, gently tap out the roll pin (C) from the mirror legs.
5. Repeat steps 3 and 4 for the opposite end of the mirror.

Replacement

1. Slide the new mirror (A) into the legs of the mirror base (D).
2. Using the locking pliers, clamp the mirror legs (B) to the legs of the mirror base (D).
3. Install the new roll pin (C) into the mirror legs (B) and the legs of the mirror base (D).
4. Using the hammer and punch, gently tap the roll pin (C) into the mirror legs (B) till the roll pin is flush with the mirror legs (B).
5. Repeat steps 2 through 4 for the opposite end of the mirror.

2

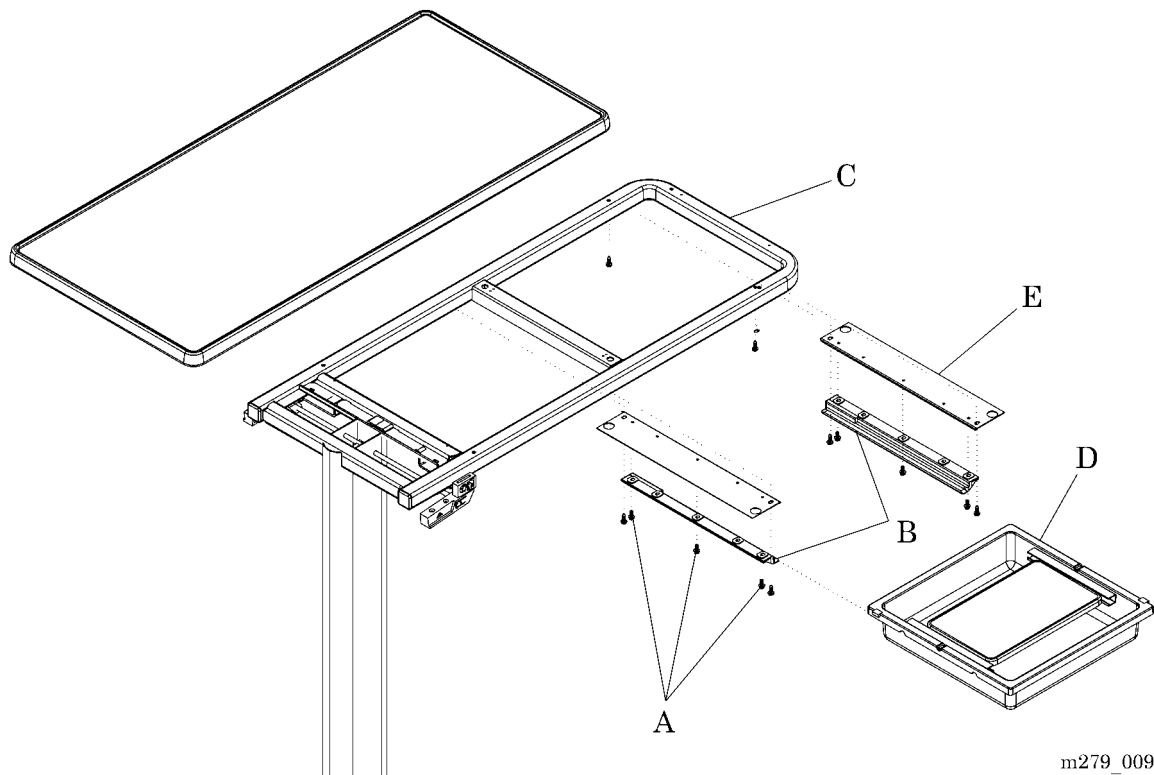
2.5 Sliding Mirror

Tools required: Phillips head screwdriver

Removal

1. Raise the table to the highest position.
2. From underneath the table loosen, but do not remove, the six screws (A) securing the guiderails (B) to the guide brackets (E) (see figure 2-3 on page 2-10).

Figure 2-3. Sliding Mirror Removal



3. Remove the mirror assembly (D) from the table (C).

Replacement

1. Place the new mirror assembly (D) inside the guiderails (B) on the underside of the table frame.
2. Tighten the six screws (A), securing the guiderails (B) to the guide brackets (E).

3. Slide the mirror in and out several times to ensure proper operation.

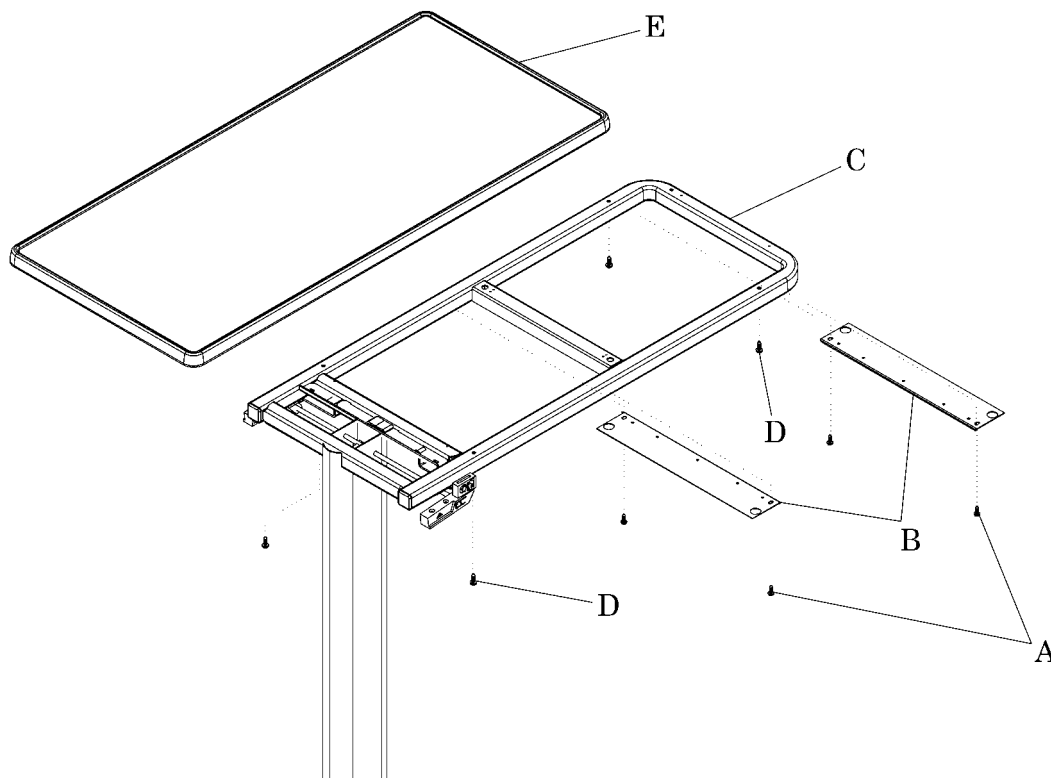
2.6 P630 Overbed Table Top

Tools required: Phillips head screwdriver

Removal

1. Raise the table to the highest position.
2. Remove the sliding mirror (see “Sliding Mirror” on page 2-8).
3. Using the phillips head screwdriver, remove the four screws (A) securing the two guide brackets (B) to the table frame (C) (see figure 2-4 on page 2-12).

Figure 2-4. P630 Overbed Table Top Removal



m279_010

4. From underneath the table, use the phillips head screwdriver to remove the four screws (D) securing the top (E) to the table frame (C).
5. Remove the top (E) from the table frame (C).

Replacement

1. Place the top (E) onto the table frame (C).
2. Align the top (E) with the holes in the table frame (C).
3. Install the four screws (D) securing the top (E) to the table frame (C).
4. Using four screws (A), secure the two guide brackets (B) to the table frame (C).
5. Install the sliding mirror (see “Sliding Mirror” on page 2-8).

2

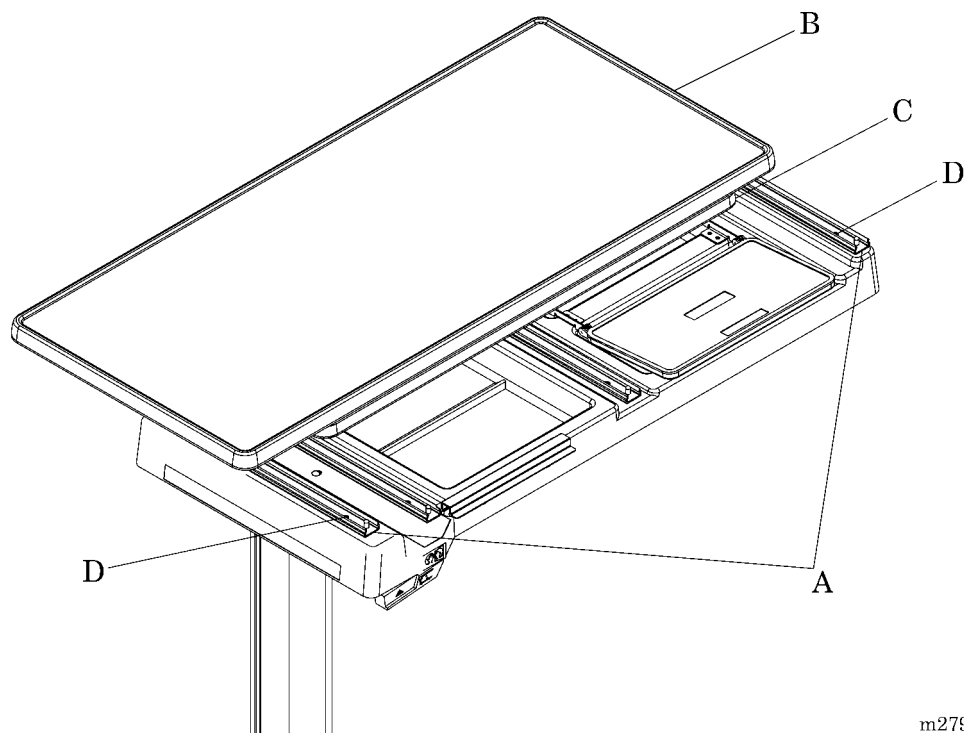
2.7 PatientMate® and PatientMate® Jr. Overbed Table Top

Tools required: Phillips head screwdriver

Removal

1. Raise the table to its highest position.
2. Using the *vanity release* button, slide both the top (B) and food service tray (C) to one side or the other (see figure 2-5 on page 2-14).

Figure 2-5. Top Removal

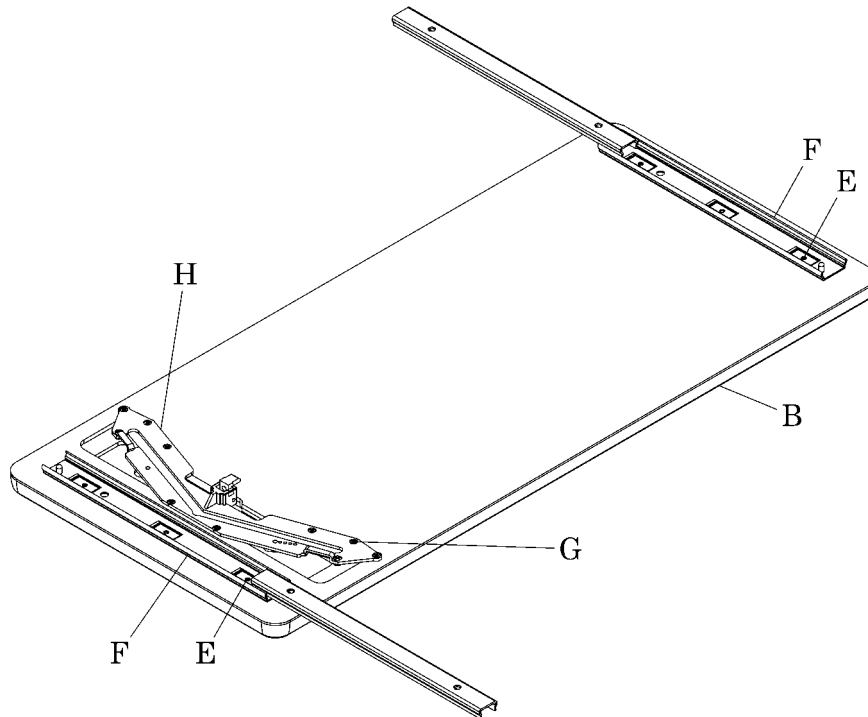


m279_011

3. Using the phillips head screwdriver, remove two of the screws (D) securing the top slides (A) to the table.
4. Carefully slide the top (B) and food service tray (C) to the middle position.
5. Using the *vanity release* button, slide both the top (B) and food service tray (C) to the opposite side it was on in step 2.
6. Using the phillips head screwdriver, remove the other two screws (D) securing the top slides (A) to the table.

7. Remove the top (B) from the table.
8. Turn the top (B) over.
9. Using the phillips head screwdriver, remove the two screws (E) securing each slide (F) to the top (B) (see figure 2-6 on page 2-15).

Figure 2-6. Slide Removal



m279_012

10. Using the phillips head screwdriver, remove the 10 screws (G) securing the cam ramp assembly (H) to the top (B).

Replacement

1. Using the phillips head screwdriver and the 10 screws (G) removed in step 10, secure the cam ramp assembly (H) to the top (B).
2. Using the phillips head screwdriver and two screws (E) for each slide (F) removed in step 9, secure each slide (F) to the top (B).
3. Flip the top (B) over, and install onto the table.

4. Ensure the pivot slide assembly roller bearing is inside the groove in the cam ramp assembly (H).
5. Using the *vanity release* button, carefully slide the top (B) and food service tray (C) to one side or the other (see figure 2-5 on page 2-14).
6. Using the phillips head screwdriver and one screw (D) per top slide (A), secure each top slide (A) to the table.
7. Carefully slide the top (B) and food service tray (C) to the middle of the table.
8. Using the *vanity release* button, carefully slide the top (B) and food service tray (C) to the opposite side it was on in step 5.
9. Using the phillips head screwdriver and one screw (D) per top slide (A), secure each top slide (A) to the table.
10. Slide the top (B) and food service tray (C) to the middle position.
11. Using the *vanity release* button, slide the top (B) and food service tray (C) to either side several times to ensure there is no binding in the tracks.
12. Using the Food Service tray release, operate the food service tray (C) in both directions several times to ensure proper operation.

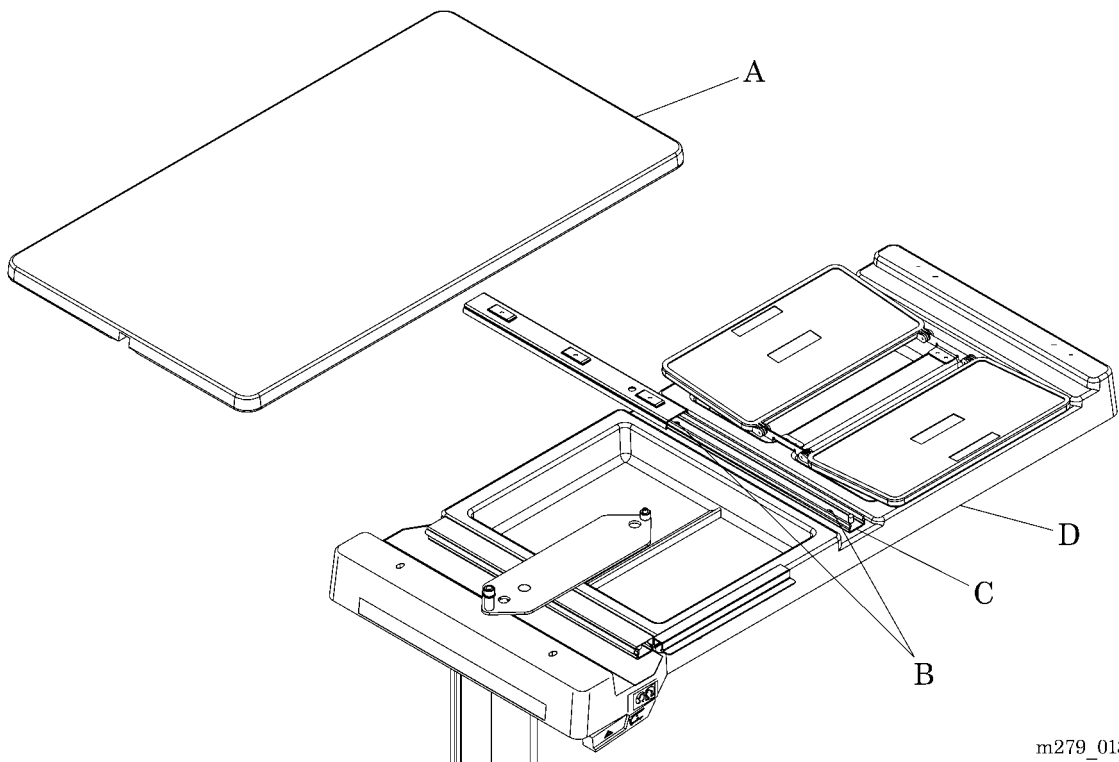
2.8 Food Tray

Tools required: Phillips head screwdriver

Removal

1. Remove the top (see “PatientMate® and PatientMate® Jr. Overbed Table Top” on page 2-12).
2. Slide the food service tray (A) to one side (see figure 2-7 on page 2-17).

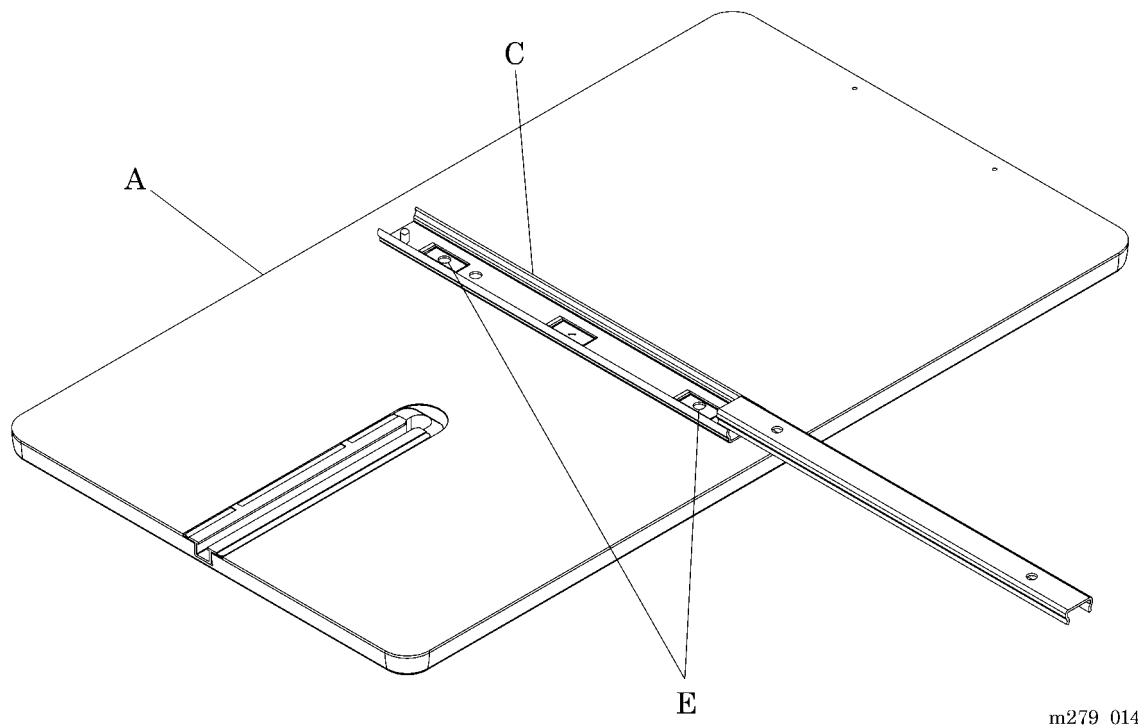
Figure 2-7. Food Service Tray Removal



m279_013

3. Remove one of the screws (B) securing the slide (C) to the table (D).
4. Carefully slide the food service tray (A) to the other side.
5. Remove the other screw (B) securing the slide (C) to the table (D).
6. Remove the food service tray (A) from the table (D).
7. Using the phillips head screwdriver, remove the two screws (E) securing the slide (C) to the bottom of the food service tray (A) (see figure 2-8 on page 2-18).

Figure 2-8. Slide Removal



Replacement

1. Using the two screws (E) removed in step 7, secure the slide (C) to the food service tray (A).
2. Install the food service tray (A) onto the table (D) (see figure 2-7 on page 2-17).
3. Ensure the roller bearing on the pivot slide is positioned inside the bearing guide on the under side of the food service tray (A).
4. Slide the food service tray (A) to one side.
5. Using one screw (B), secure one end of the slide (C) to the table (D).
6. Slide the food service tray (A) to the opposite side.
7. Using one screw (B), secure the other end of the slide (C) to the table (D).
8. Install the top (see “PatientMate® and PatientMate® Jr. Overbed Table Top” on page 2-12).

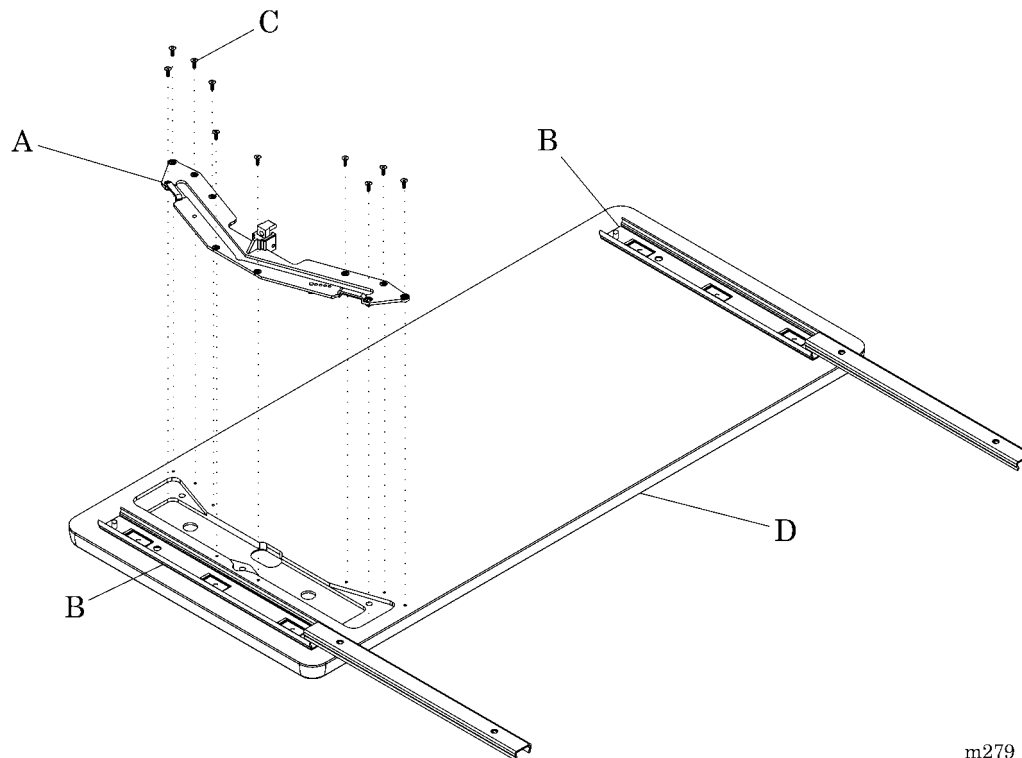
2.9 Cam Ramp Assembly

Tools required: Phillips head screwdriver

Removal

1. Remove the top from the table (see “PatientMate® and PatientMate® Jr. Overbed Table Top” on page 2-12).
2. Flip the top (D) over so the cam ramp assembly (A) and the slides (B) are facing up (see figure 2-9 on page 2-19).

Figure 2-9. Cam Ramp Assembly Removal



m279_015

3. Using the phillips head screwdriver, remove the 10 screws (C) securing the cam ramp assembly (A) to the top (D).

Replacement

1. Using the 10 screws (C) removed in step 3, secure the cam ramp assembly (A) to the top (D).

2. Install the top (D) onto the table (see “PatientMate® and PatientMate® Jr. Overbed Table Top” on page 2-12).

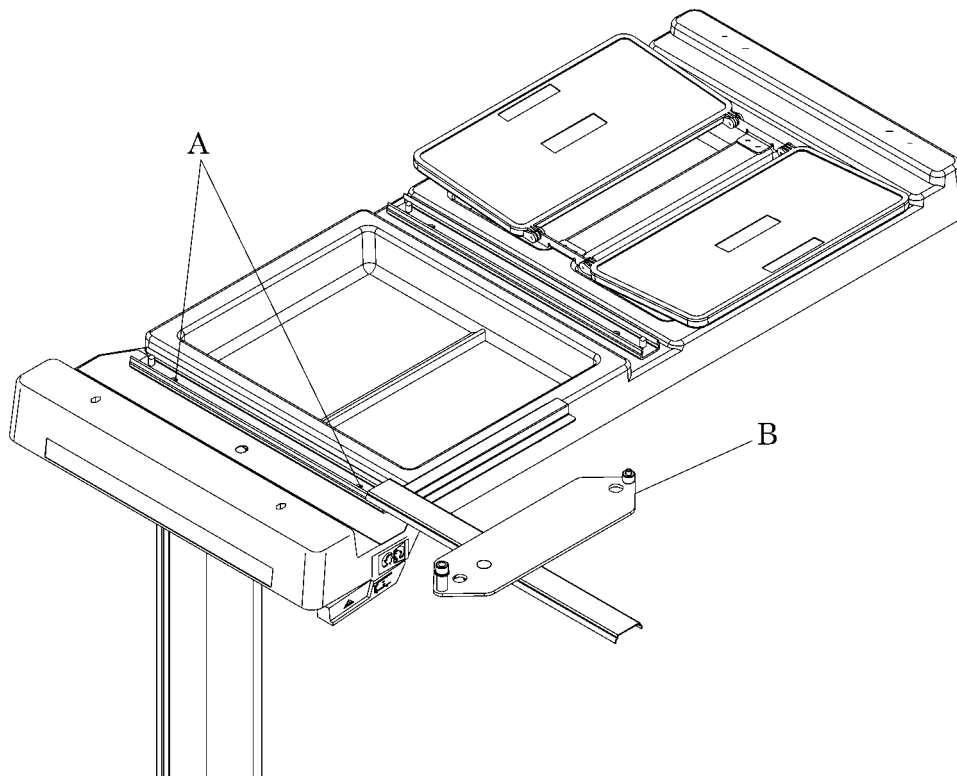
2.10 Pivot Slide

Tools required: Phillips head screwdriver

Removal

1. Remove the top (see “PatientMate® and PatientMate® Jr. Overbed Table Top” on page 2-12).
2. Remove the food service tray (see “Food Service Tray” on page 2-15).
3. Using the phillips head screwdriver, remove the two screws (A) securing the pivot slide (B) to the table (see figure 2-10 on page 2-21).

Figure 2-10. Pivot Slide Removal



m279_016

Replacement

1. Using two screws (A), secure the pivot slide (B) to the table.
2. Install the food service tray (see “Food Service Tray” on page 2-15).

3. Install the top (see “PatientMate® and PatientMate® Jr. Overbed Table Top” on page 2-12).

2.11 Vanity Tray

Tools required: Phillips head screwdriver

Removal

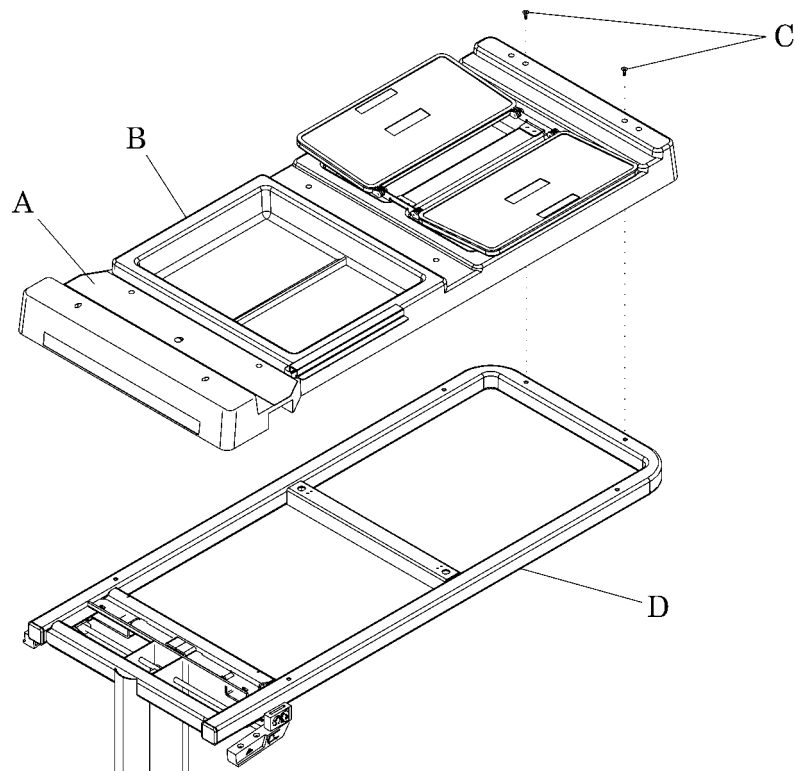
1. Remove the top (see “PatientMate® and PatientMate® Jr. Overbed Table Top” on page 2-12).
2. Remove the food service tray (see “Food Service Tray” on page 2-15).
3. Remove the pivot slide (see “Pivot Slide” on page 2-19).

NOTE:

The pivot slide mount screws are also used to secure the vanity tray to the table frame.

4. Remove the stainless steel plate (A) from the vanity tray (B) (see figure 2-11 on page 2-23).

Figure 2-11. Vanity Tray Removal



m279_017

5. Using the phillips head screwdriver, remove the two screws (C) securing the vanity tray (B) to the table frame (D).

6. Remove the vanity tray (B) from the table frame (D).

Replacement

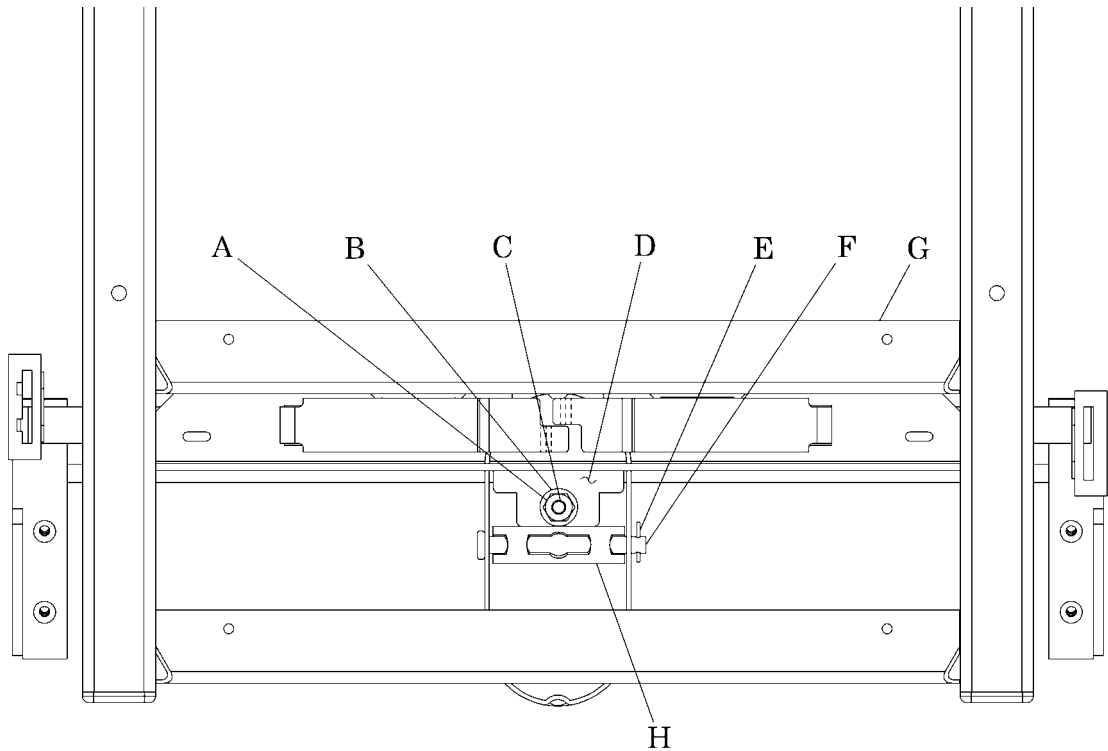
1. Place the vanity tray (B) onto the table frame (D).
2. Using two screws (C), secure the vanity tray (B) to the table frame (D).
3. Install the stainless steel plate (A) onto the vanity tray (B).
4. Install the pivot slide (see “Pivot Slide” on page 2-19).
5. Install the food service tray (see “Food Service Tray” on page 2-15).
6. Install the top (see “PatientMate® and PatientMate® Jr. Overbed Table Top” on page 2-12).

2.12 Top Frame

Tools required: 1/4" drive ratchet Needle nose pliers
 1/4" drive, 3/8" deep well socket
 1/4" drive, 6" extension

Removal

1. Raise the table to the high position.
2. Remove the top (see "P630 Overbed Table Top" on page 2-10 or "PatientMate® and PatientMate® Jr. Overbed Table Top" on page 2-12).
3. For PatientMate® and PatientMate® Jr. Overbed Tables, remove the food service tray (see "Food Service Tray" on page 2-15).
4. For PatientMate® and PatientMate® Jr. Overbed Tables, remove the pivot slide (see "Pivot Slide" on page 2-19).
5. For PatientMate® and PatientMate® Jr. Overbed Tables, remove the stainless steel plate from the vanity tray (see "Vanity Tray" on page 2-21).
6. For PatientMate® and PatientMate® Jr. Overbed Tables, remove the vanity tray (see "Vanity Tray" on page 2-21).
7. Using the 1/4" drive ratchet, 6" extension, and 3/8" deep well socket, remove the nut (A) and washer (B) securing the release rod (C) to the paddle (D) (see figure 2-12 on page 2-26).

Figure 2-12. Top Frame Removal

m279_018

8. Using the needle nose pliers, remove the cotter pin (E) from the clevis pin (F) securing the top frame (G) to the gas spring assembly (H).
9. Remove the top frame from the base assembly.

Replacement

1. Install the top frame onto the base assembly.
2. Carefully line up the release rod (C) with the paddle (D).
3. Install the clevis pin (F) through the top frame (G) going through the gas spring assembly (H).
4. Install the cotter pin (E) into the clevis pin (F).
5. Install the washer (B) and nut (A) onto the release rod (C) on top of the paddle (D).
6. Tighten the nut (A) installed in step 5 approximately eight turns.

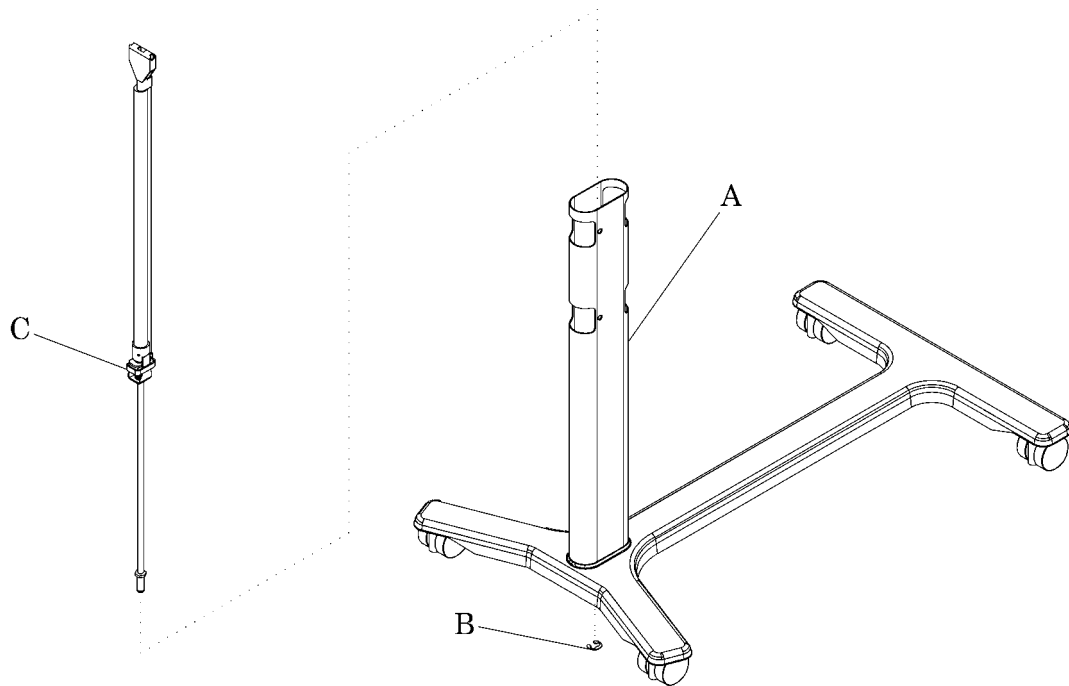
7. Place the vanity tray, food service tray, pivot slide, stainless steel plate, and top onto the top frame in a position that does not interfere with the nut on top of the paddle.
8. Ensure the top frame (G) stays at the present height with the parts on top of it.
9. If the top frame (G) does not stay in position, loosen the nut (A) on top of the paddle (D) till the top frame (G) stays in position.
10. For PatientMate® and PatientMate® Jr. Overbed Tables, install the vanity tray (see “Vanity Tray” on page 2-21).
11. For PatientMate® and PatientMate® Jr. Overbed Tables, install the stainless steel plate onto the vanity tray (see “Vanity Tray” on page 2-21).
12. For PatientMate® and PatientMate® Jr. Overbed Tables, install the pivot slide (see “Pivot Slide” on page 2-19).
13. For PatientMate® and PatientMate® Jr. Overbed Tables, install the food service tray (see “Food Service Tray” on page 2-15).
14. Install the top (see “P630 Overbed Table Top” on page 2-10 or “PatientMate® and PatientMate® Jr. Overbed Table Top” on page 2-12).

2.13 Gas Spring Assembly

Tools required: Phillips head screw driver Needle nose pliers
 1/4" drive, 3/8" deep well socket
 1/4" drive, 6" extension 1/4" drive ratchet

Removal

1. Raise the table to the high position.
2. Remove the top (see "P630 Overbed Table Top" on page 2-10 or "PatientMate® and PatientMate® Jr. Overbed Table Top" on page 2-12).
3. For PatientMate® and PatientMate® Jr. Overbed Tables, remove the food service tray (see "Food Service Tray" on page 2-15).
4. For PatientMate® and PatientMate® Jr. Overbed Tables, remove the pivot slide (see "Pivot Slide" on page 2-19).
5. For PatientMate® and PatientMate® Jr. Overbed Tables, remove the stainless steel plate from the vanity tray (see "Vanity Tray" on page 2-21).
6. For PatientMate® and PatientMate® Jr. Overbed Tables, remove the vanity tray (see "Vanity Tray" on page 2-21).
7. Remove the top frame (see "Top Frame" on page 2-23).
8. Turn the base assembly on its side.
9. Using the needle nose pliers, remove the truarc ring (B) from the base of the gas spring assembly (C) (see figure 2-13 on page 2-29).

Figure 2-13. Gas Spring Assembly Removal

m279_019

10. Remove the gas spring assembly (C) from the base assembly (A).

NOTE:

The gas spring assembly is only changed as an assembly and not on a piece part level.

Replacement

1. Install the new gas spring assembly (C) into the base assembly (A).
2. Install the truarc ring (B) onto the bottom of the gas spring assembly (C).
3. Install the top frame (see “Top Frame” on page 1-25).
4. Place the vanity tray, food service tray, pivot slide, stainless steel plate, and top onto the top frame in a position that does not interfere with the nut on top of the paddle.
5. Ensure the top frame stays at the present height with the parts on top of the top frame.

6. If the top frame does not stay in position, using the ratchet, extension and socket, loosen the nut on top of the paddle till the top frame stays in position.
7. For PatientMate® and PatientMate® Jr. Overbed Tables, install the vanity tray (see “Vanity Tray” on page 2-21).
8. For PatientMate® and PatientMate® Jr. Overbed Tables, install the stainless steel plate onto the vanity tray (see “Vanity Tray” on page 2-21).
9. For PatientMate® and PatientMate® Jr. Overbed Tables, install the pivot slide (see “Pivot Slide” on page 2-19).
10. For PatientMate® and PatientMate® Jr. Overbed Tables, install the food service tray (see “Food Service Tray” on page 2-15).
11. Install the top (see “P630 Overbed Table Top” on page 2-10 or “PatientMate® and PatientMate® Jr. Overbed Table Top” on page 2-12).

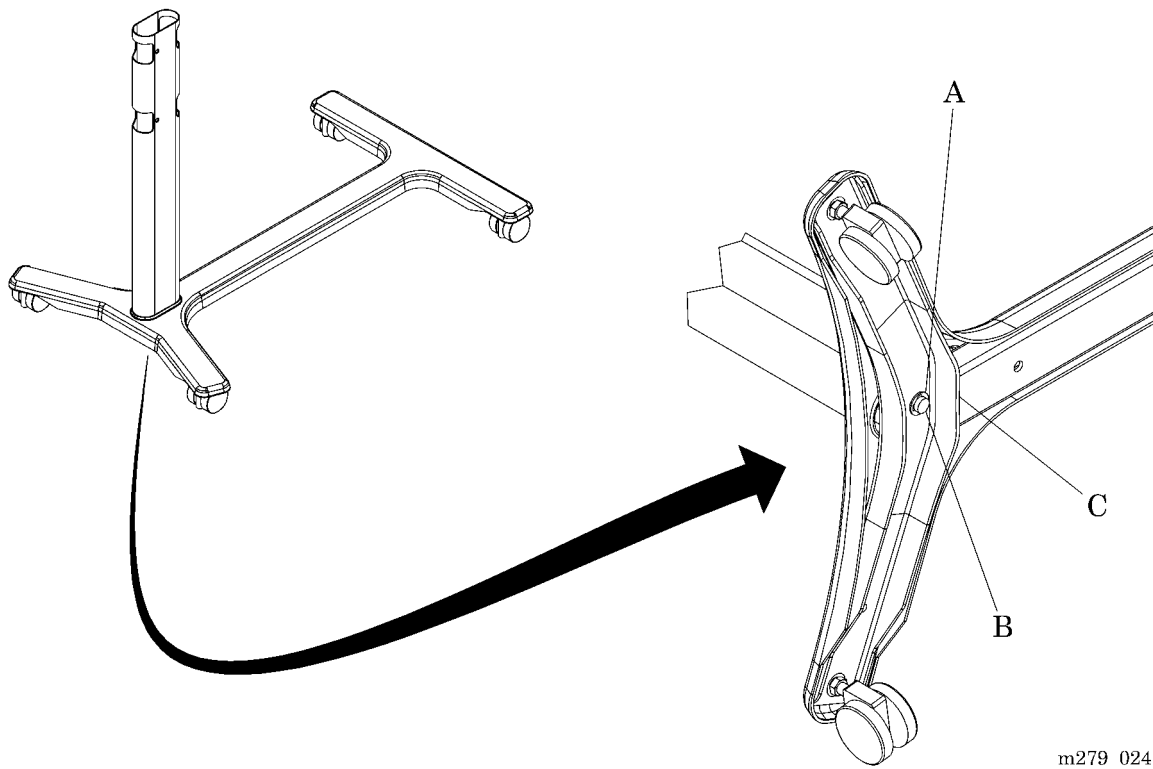
2.14 Base Frame Cover

Tools required: Needle nose pliers Wire cutters
Rubber mallet Phillips head screwdriver
5/8" deep well socket

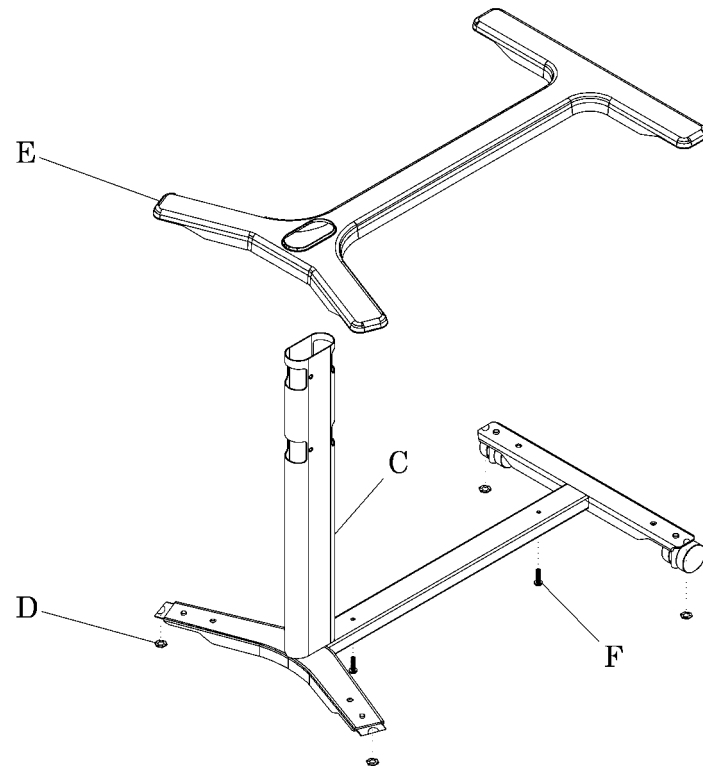
Removal

1. Turn the table upside down onto the top.
2. Using the needle nose pliers, remove the truarc ring (A) securing the gas spring assembly (B) to the base frame assembly (C) (see figure 2-14 on page 2-31).

Figure 2-14. Truarc Ring Removal



3. Remove the base frame assembly from the top frame.
4. Using the wire cutters, cut and remove the four pushnuts (D) from the base frame cover (E) (see figure 2-15 on page 2-32).

Figure 2-15. Base Frame Cover Removal

m279_020

5. Using the phillips head screwdriver, remove the two screws (F) securing the base frame cover (E) to the base frame assembly (C).
6. Remove the base frame cover (E).

Replacement

1. Install the new base frame cover (E) onto the base frame assembly (C).
2. Place the base frame assembly upside down on a suitable work bench with the base frame cover (E) supported under the four casters.
3. Using two screws (F), secure the base frame cover (E) to the base frame assembly (C).
4. Position the four pushnuts (D) onto the base frame cover (E).
5. Using the rubber mallet and 5/8" deep well socket, seat the pushnuts (D) onto the base frame cover (E).
6. Install the base frame assembly (C) onto the top frame.

7. Carefully guide the gas spring assembly (B) through the hole in the bottom of the base frame assembly (C) (see figure 2-14 on page 2-31).
8. Install the truarc ring (A) onto the bottom of the gas spring assembly (B).
9. Turn the table back up to the normal operating position.

2.15 Caster

Tools required: ½" open end wrench

Rubber mallet

Parts required: As required 8651
(1) SA1309

Loctite®¹ adhesive
Thread repair kit

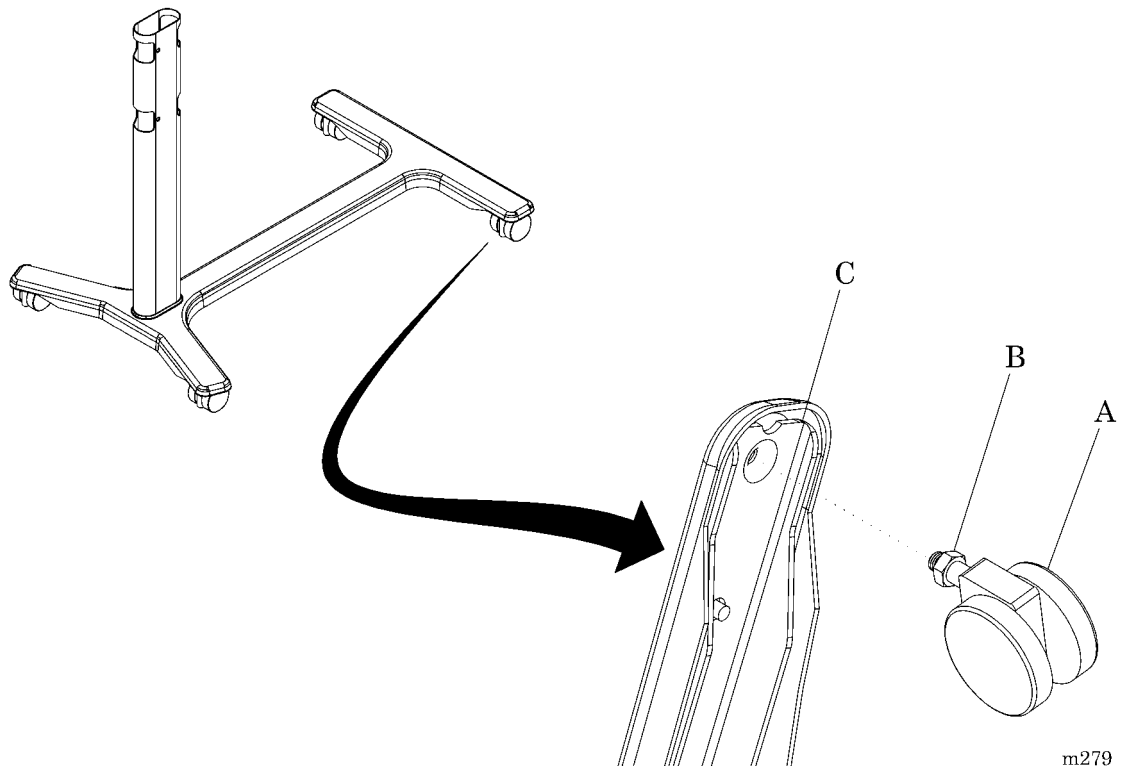
Removal

NOTE:

Use of the thread repair kit is only needed if the threads in the base frame assembly are stripped.

1. Turn the table upside down onto the top.
2. Using the ½" wrench, remove the caster (A) and caster stem (B) from the base frame assembly (C) (see figure 2-16 on page 2-34).

Figure 2-16. Caster Removal



m279_021

1. Loctite® is a registered trademark of Loctite Corporation.

NOTE:

The caster and caster stem are removed as an assembly.

Replacement

1. Coat the threads of the caster stem (B) with Loctite® adhesive.
2. Install the caster stem (B) into the base frame assembly (C).
3. Install the caster (A) onto the caster stem (B).
4. Using the rubber mallet, tap the caster (A) to ensure it is seated on the caster stem (B).

2

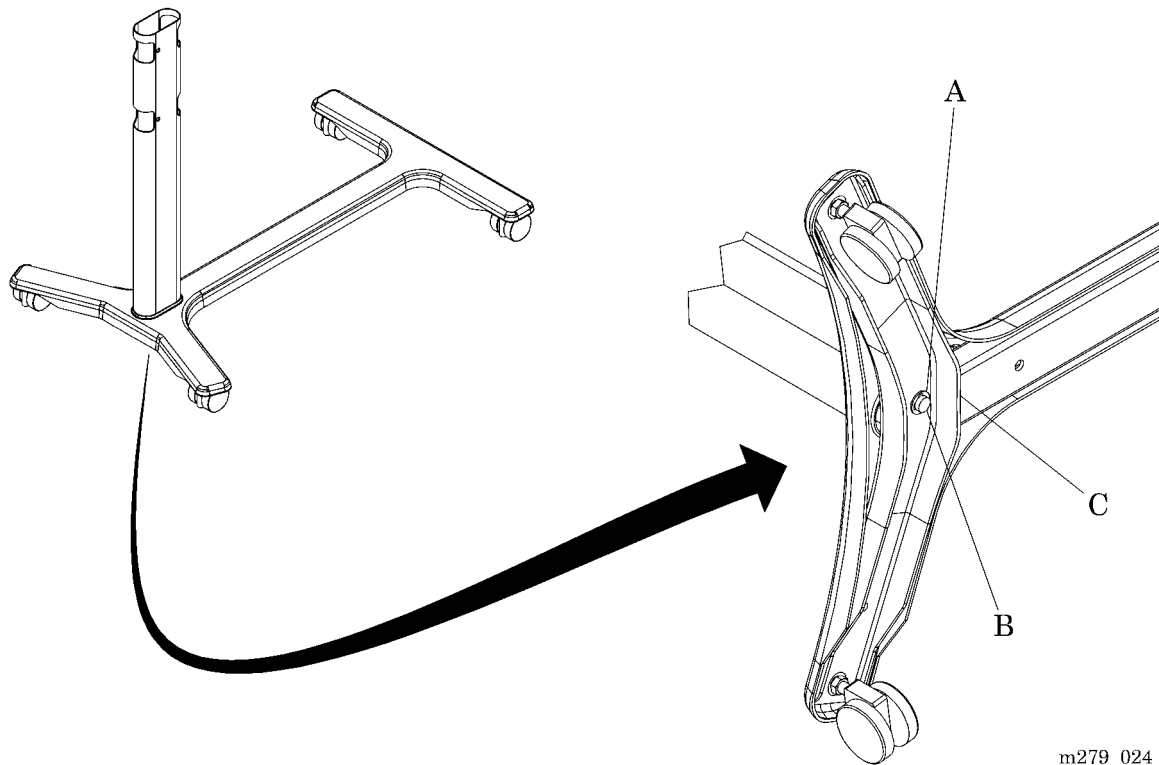
2.16 PatientMate® Overbed Table Lower Saddle Tray

Tools required:	Needle nose pliers	3/8" socket
	1/4" drive ratchet	(2) 6" extensions

Removal

1. Turn the table upside down onto the top.
2. Using the needle nose pliers, remove the truarc ring (A) securing the gas spring assembly (B) to the base frame assembly (C) (see figure 2-17 on page 2-36).

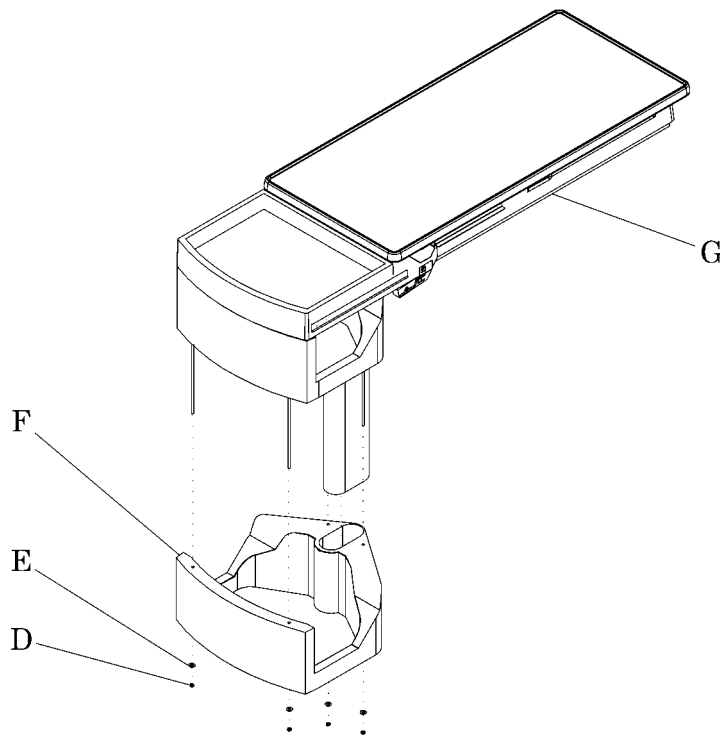
Figure 2-17. Truarc Ring Removal



m279_024

3. Remove the base frame assembly (C) from the top frame.
4. Using the ratchet, two extensions, and the 3/8" socket, remove the four nuts (D) and washers (E) securing the lower saddle tray (F) to the top frame (G) (see figure 2-18 on page 2-37).

Figure 2-18. Lower Saddle Tray Removal



m279_022

5. Slide the lower saddle tray (F) off the top frame (G).

Replacement

1. Slide the lower saddle tray (F) onto the top frame (G).
2. Using the four nuts (D) and washers (E), secure the lower saddle tray (F) to the top frame (G).
3. Install the base frame assembly onto the top frame.
4. Ensure the gas spring assembly is aligned with the hole in the bottom of the base frame assembly.
5. Install the truarc ring (A) onto the gas spring assembly (B) (see figure 2-17 on page 2-36).
6. Turn the table over to the normal operating position.

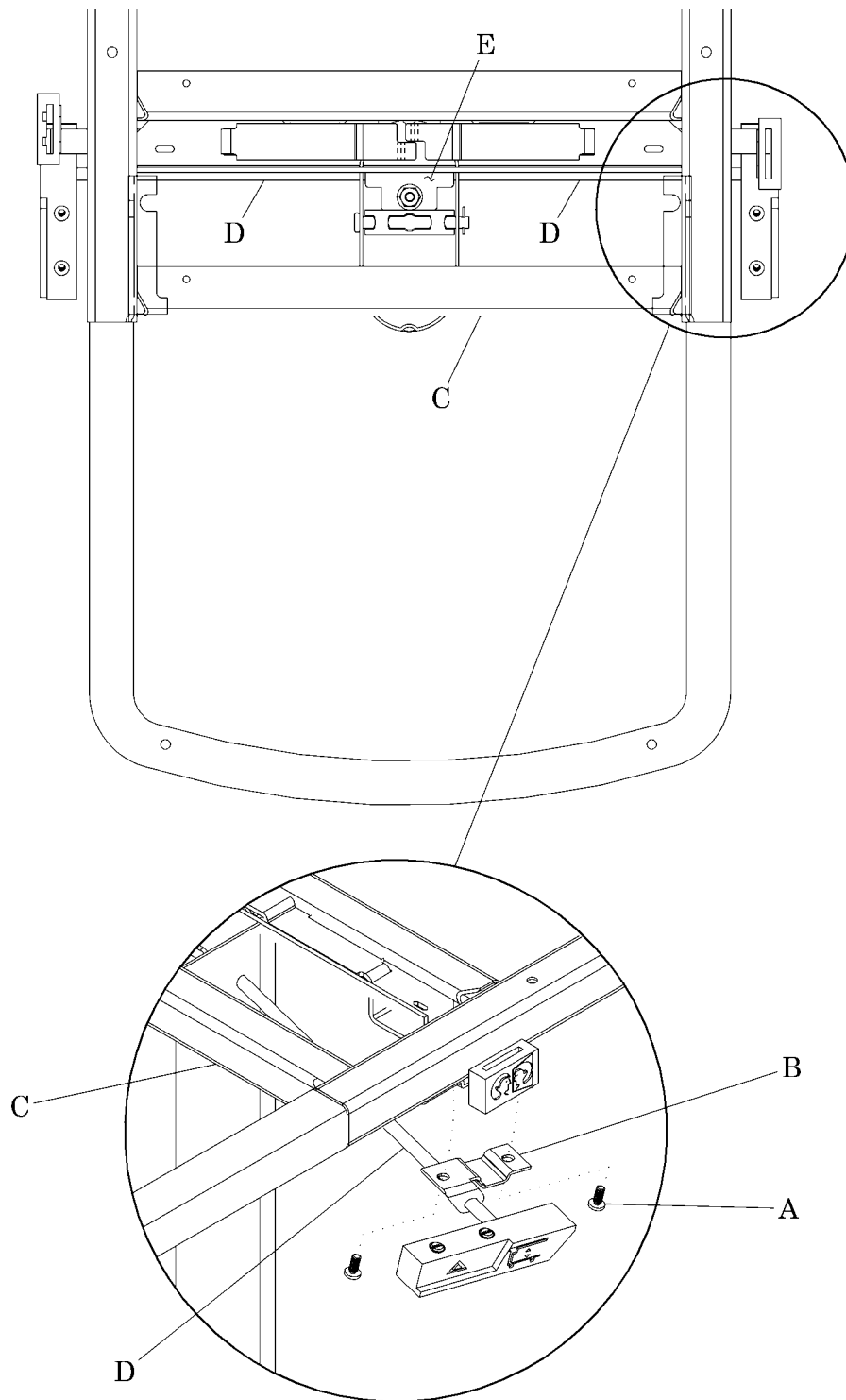
2.17 PatientMate® Overbed Table Upper Saddle Tray

Tools required: Needle nose pliers 3/8" socket
 1/4" drive ratchet (2) 6" extensions
 Phillips head screwdriver

Removal

1. Remove the top (see “PatientMate® and PatientMate® Jr. Overbed Table Top” on page 2-14).
2. Remove the food service tray (see “Food Tray” on page 2-17).
3. Remove the pivot slide (see “Pivot Slide” on page 2-21).
4. Remove the stainless steel plate from the vanity tray (see “Vanity Tray” on page 2-23).
5. Remove the vanity tray (see “Vanity Tray” on page 2-23).
6. Using the phillips head screwdriver, remove the two screws (A) securing the bracket (B) to the top frame (C) (see figure 2-19 on page 2-39).

Figure 2-19. Up/Down Release Rod Removal

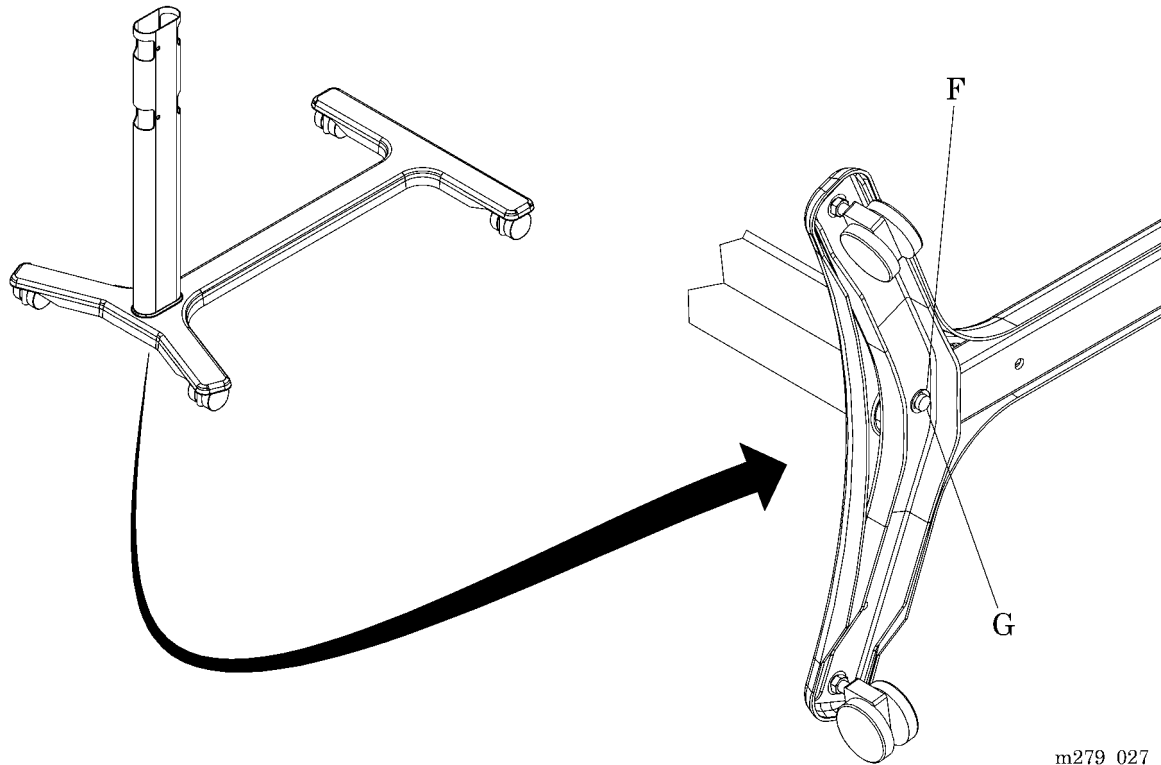


m279_026

7. Remove the up/down release rods (D) from the paddle (E).

8. Remove the up/down release rods (D) from the table (C).
9. Turn the table upside down onto the top.
10. Using the needle nose pliers, remove the truarc ring (F) from the gas spring assembly (G) (see figure 2-20 on page 2-40).

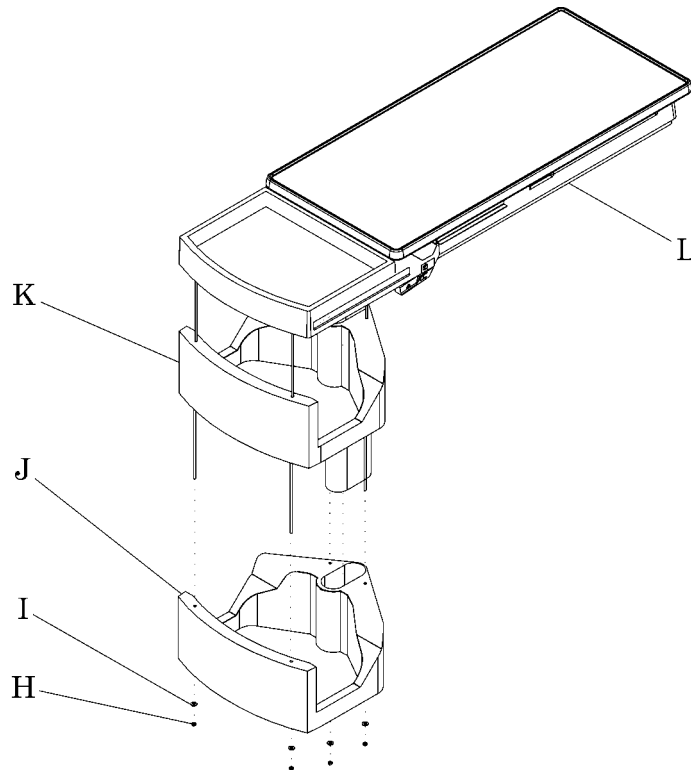
Figure 2-20. Truarc Ring Removal



m279_027

11. Remove the base frame assembly from the top frame.
12. Using the ratchet, extensions, and socket, remove the four nuts (H) and washers (I) securing the upper saddle tray (K) and lower saddle tray (J) to the table (see figure 2-21 on page 2-41).

Figure 2-21. Saddle Tray Removal



m279_028

13. Slide the lower saddle tray (J) off the top frame (L).

14. Slide the upper saddle tray (K) off the top frame (L).

Replacement

1. Slide the upper saddle tray (K) onto the top frame (L).

NOTE:

The upper saddle tray is identified by the slots in the upper edge for the up/down release rods.

2. Slide the lower saddle tray (J) onto the top frame (L).

3. Using the four washers (I) and nuts (H), secure the upper saddle tray (K) and lower saddle tray (J) to the top frame (L).

4. Install the base frame assembly onto the top frame.

5. Ensure the gas spring assembly aligns with the hole in the base frame assembly.

6. Install the truarc ring (F) onto the gas spring assembly (G) (see figure 2-20 on page 2-40).
7. Turn the table up to the normal operating position.
8. Install the up/down release rods (D) through the upper saddle tray and into the top frame (C) (see figure 2-19 on page 2-39).
9. Connect the up/down release rods (D) to the paddle (E).
10. Using two screws (A), secure the bracket (B) to the top frame (C).
11. Install the vanity tray (see “Vanity Tray” on page 2-21).
12. Install the stainless steel plate onto the vanity tray (see “Vanity Tray” on page 2-21).
13. Install the pivot slide (see “Pivot Slide” on page 2-19).
14. Install the food service tray (see “Food Service Tray” on page 2-15).
15. Install the top (see “PatientMate® and PatientMate® Jr. Overbed Table Top” on page 2-12).

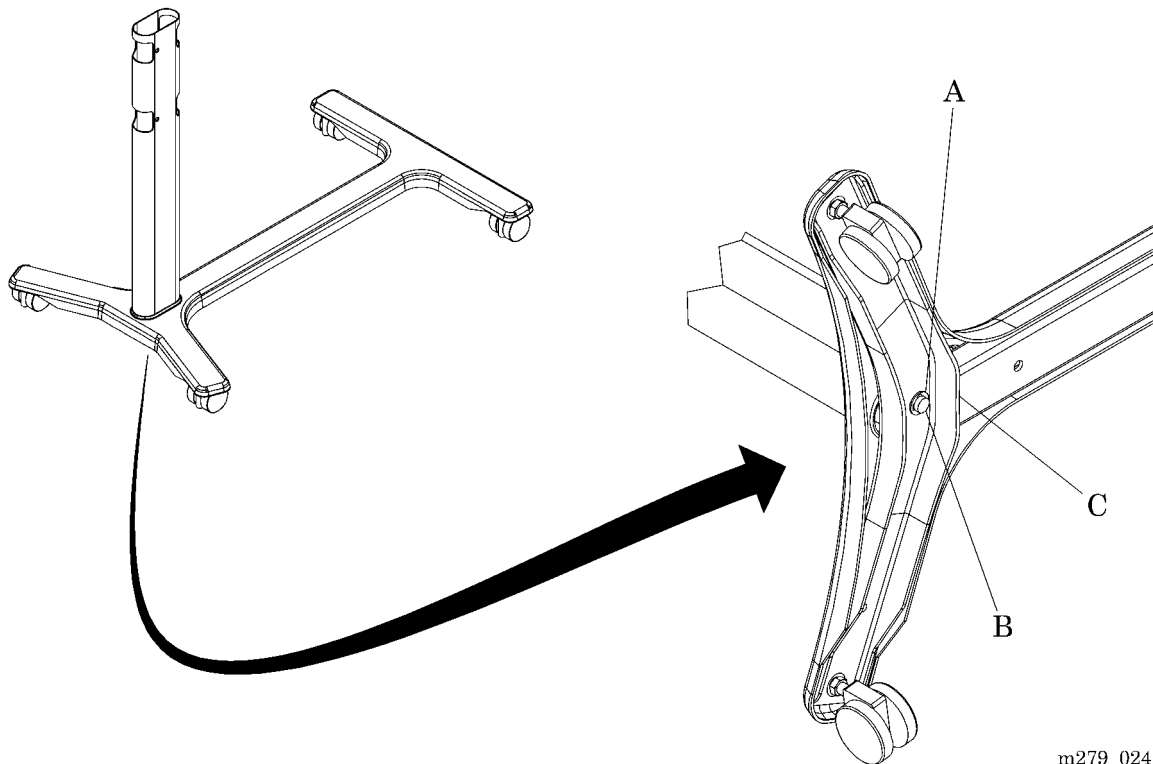
2.18 Top Frame and Base Frame Assembly Play Adjustment

Tools required: Needle nose pliers 7/16" open end wrench

Adjustment

1. Turn the table over onto the top.
2. Using the needle nose pliers, remove the truarc ring (A) securing the gas spring assembly (B) to the base frame assembly (C) (see figure 2-22 on page 2-43).

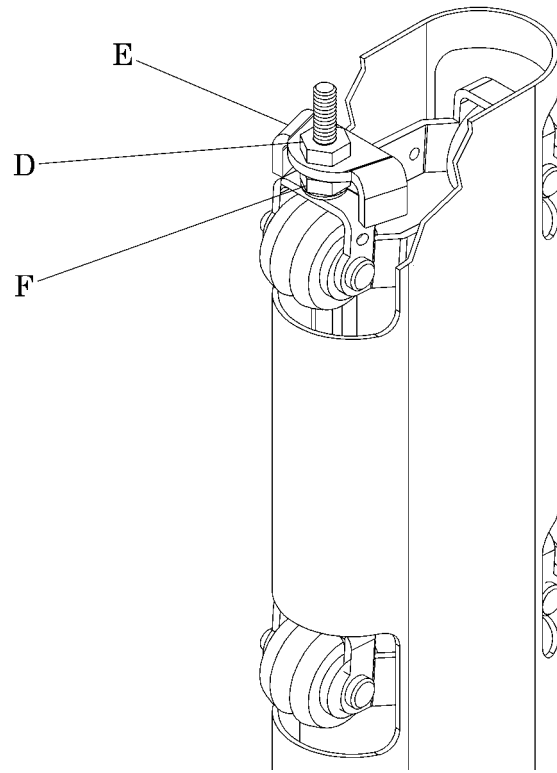
Figure 2-22. Truarc Ring Removal



m279_024

3. Remove the base frame assembly from the top frame.
4. Using the 7/16" wrench, loosen, but do not remove, the nut (D) **above** the anchor bracket (E) several turns (see figure 2-23 on page 2-44).

Figure 2-23. Play Adjustment



m279_023

5. To increase the amount of play, rotate the nut (F) **below** the anchor bracket (E) down several turns.
6. To decrease the amount of play, rotate the nut (F) **below** the anchor bracket (E) up several turns.
7. Tighten the nut (D) **above** the anchor bracket (E).
8. Install the base frame assembly onto the top frame.
9. Ensure the gas spring assembly aligns with the hole in the base frame assembly.
10. Install the truarc ring (A) onto the gas spring assembly (B) (see figure 2-22 on page 2-43).
11. Turn the table over into the normal operating position.
12. Check for excessive play or tightness between the top frame and base frame assembly.

13. If excessive play or tightness is still present, repeat steps 1 through 12 till the play is within acceptable limits.

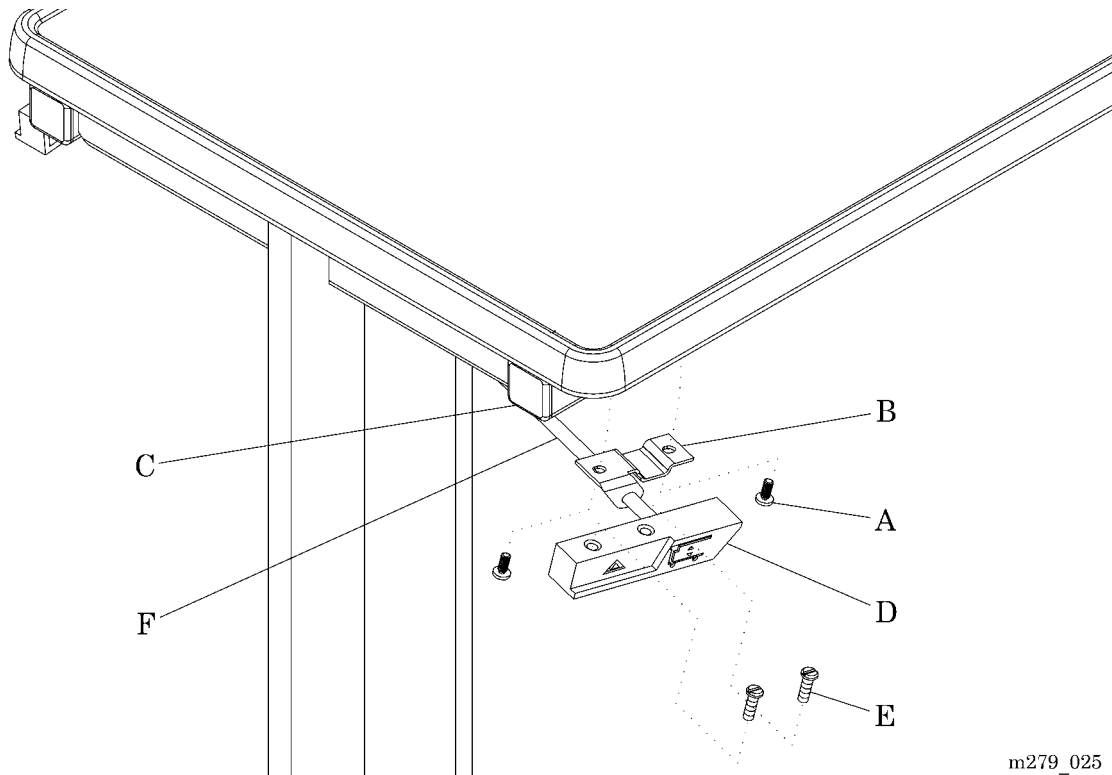
2.19 Up/Down Release Rod Handle

Tools required: Offset phillips head screwdriver
Phillips head screwdriver

Removal

1. Using the phillips head screwdriver, remove the two screws (A) securing the bracket (B) to the table frame (C) (see figure 2-24 on page 2-46).

Figure 2-24. Up/Down Release Rod Handle Removal



m279_025

2. Rotate the up/down release rod handle (D) down enough to gain access to the mount screws (E).
3. Using the offset phillips head screwdriver, remove the two mount screws (E) securing the handle (D) to the release rod (F).

Replacement

1. Install the handle (D) onto the release rod (F).

2. Using the offset phillips head screw driver, install the two mount screws (E) securing the handle (D) to the release rod (F).
3. Using the phillips head screwdriver and two screws (A), install the bracket (B) onto the table frame (C).

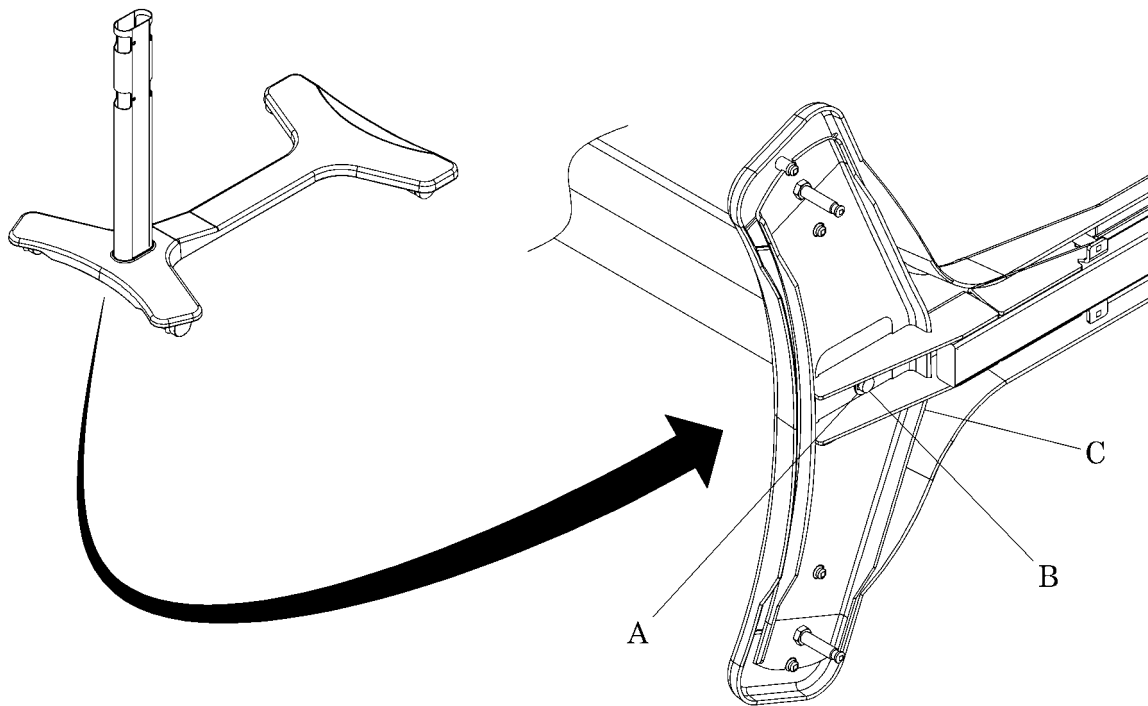
2.20 Base Frame Cover (New Style Base)

Tools required:	Needle nose pliers	Wire cutters
	Rubber mallet	Phillips head screwdriver
	5/8" deep well socket	

Removal

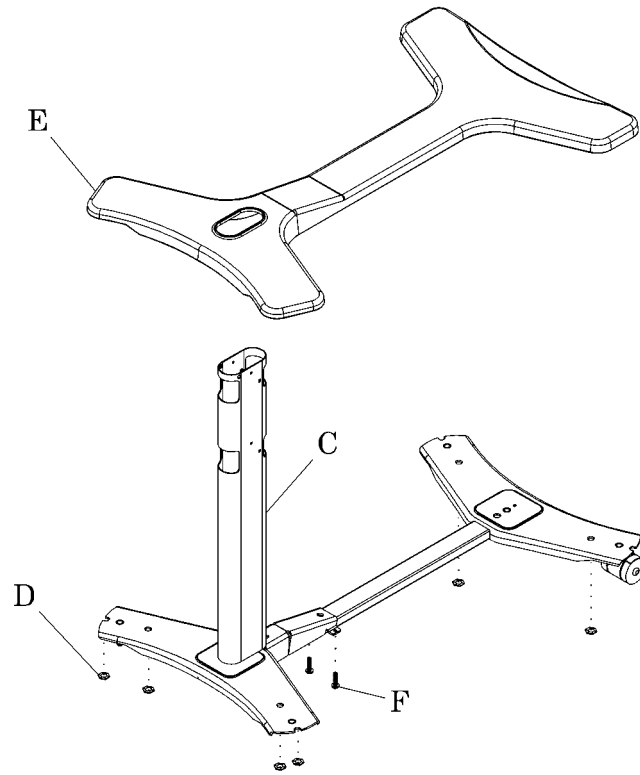
1. Turn the table upside down onto its top.
2. Remove the truarc ring (A) securing the gas spring assembly (B) to the base frame assembly (C) (see figure 2-25 on page 2-48).

Figure 2-25. Truarc Ring Removal



m279a032

3. Remove the base frame assembly (C) from the top frame.
4. Cut and remove the six pushnuts (D) from the base frame cover (E) (see figure 2-26 on page 2-49).

Figure 2-26. Base Frame Cover Removal

m279a033

5. Remove the two screws (F) securing the base frame cover (E) to the base frame assembly (C).
6. Remove the base frame cover (E).

Replacement

1. Install the new base frame cover (E) onto the base frame assembly (C).
2. Place the base frame assembly (C) upside down on a suitable work bench with the base frame cover (E) supported under the casters.
3. Install the two screws (F) to secure the base frame cover (E) to the base frame assembly (C).
4. Position the six pushnuts (D) onto the base frame cover (E).
5. Using the rubber mallet and 5/8" deep well socket, seat the pushnuts (D) onto the base frame cover (E).
6. Install the base frame assembly (C) onto the top frame.

7. Carefully guide the gas spring assembly (B) through the hole in the bottom of the base frame assembly (C) (see figure 2-25 on page 2-48).
8. Install the truarc ring (A) onto the bottom of the gas spring assembly (B).
9. Turn the table upright to its normal operating position.

2.21 Caster (New Style Base)

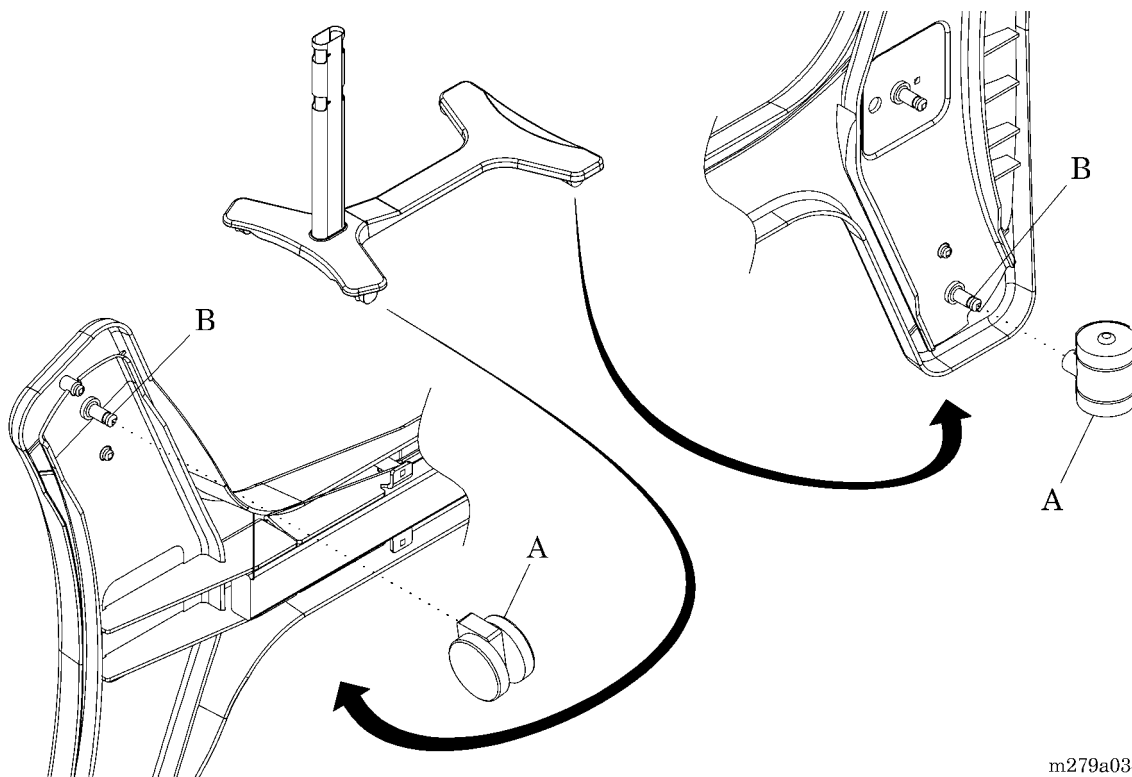
Tools required: Flat head screwdriver

Rubber mallet

Removal

1. Turn the table upside down onto its top.
2. Using the screwdriver, remove the caster (A) from the caster stem (B) (see figure 2-27 on page 2-51).

Figure 2-27. Caster Removal



m279a034

Replacement

1. Install the caster (A) onto the caster stem (B).
2. Tap the caster (A) until it is fully seated.

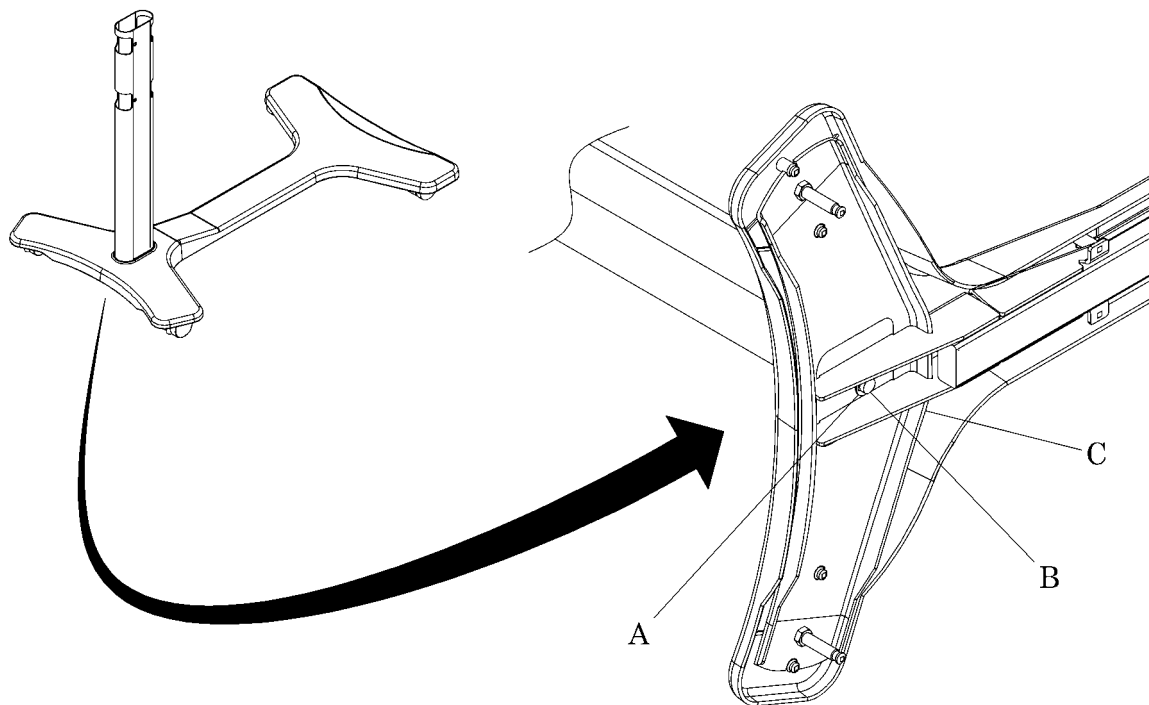
2.22 Top Frame and Base Frame Assembly Play Adjustment (New Style Base)

Tools required: Needle nose pliers 7/16" open end wrench

Adjustment

1. Turn the table over onto its top.
2. Remove the truarc ring (A) securing the gas spring assembly (B) to the base frame assembly (C) (see figure 2-28 on page 2-52).

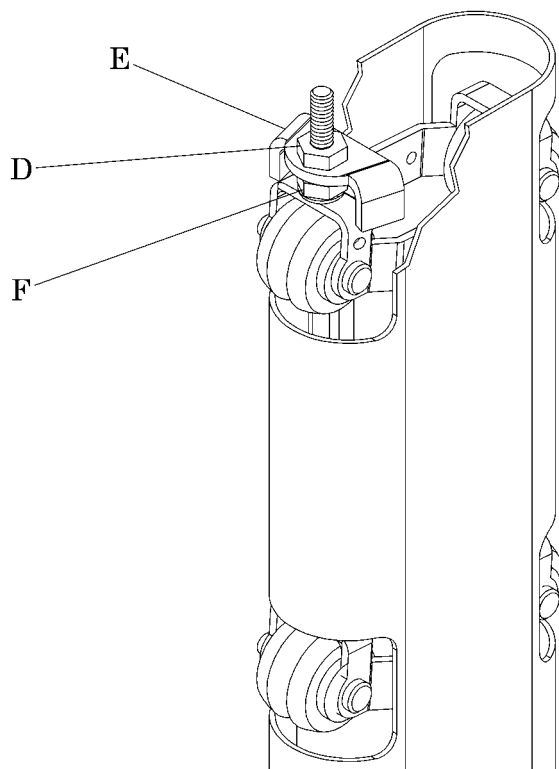
Figure 2-28. Truarc Ring Removal



m279a035

3. Remove the base frame assembly (C) from the top frame.
4. Using the 7/16" wrench, loosen, but do not remove, the nut (D) **above** the anchor bracket (E) several turns (see figure 2-29 on page 2-53).
5. To increase the amount of play, rotate the nut (F) **below** the anchor bracket (E) down several turns.
6. To decrease the amount of play, rotate the nut (F) **below** the anchor bracket (E) up several turns.

Figure 2-29. Play Adjustment



m279a041

7. Tighten the nut (D) **above** the anchor bracket (E).
8. Install the base frame assembly (C) onto the top frame, see “Base Frame Cover (New Style Base)” on page 2-48.
9. Ensure the gas spring assembly (B) aligns with the hole in the base frame assembly (C).
10. Install the truarc ring (A) onto the gas spring assembly (B).
11. Turn the table upright to its normal operating position.
12. Check for excessive play or tightness between the top frame and base frame assembly (C).
13. If excessive play or tightness is still present, repeat steps 1 through 12 until the play is within acceptable limits.

NOTES:

Chapter 3

Parts List

Chapter Contents

Warranty	3 - 3
Service Parts Ordering	3 - 5
Exchange Policy	3 - 7
In-Warranty Exchanges	3 - 7
Out-of-Warranty Exchanges	3 - 7
Recommended Spare Parts	3 - 8
P630 Overbed Table	3 - 10
PatientMate® Jr. Overbed Table (P631) (Sheet 1 of 2)	3 - 14
PatientMate® Jr. Overbed Table (P631) (Sheet 2 of 2)	3 - 16
PatientMate® Overbed Table (P632) (Sheet 1 of 2)	3 - 20
PatientMate® Overbed Table (P632) (Sheet 2 of 2)	3 - 22
Base Frame (New Style Base)	3 - 26

3

NOTES:

Warranty

HILL-ROM COMPANY, INC. LIMITED WARRANTY

Hill-Rom Company, Inc. (Hill-Rom) has a long tradition of providing superior products and service to our customers. Our goal is "Total Customer Satisfaction". In that spirit, Hill-Rom is proud to offer the following warranty.

GENERAL WARRANTY (APPLICABLE UNLESS A SPECIFIC WARRANTY IS LISTED)

Hill-Rom warrants to the original purchaser that its products and replacement parts shall be free from defects in material and workmanship for a period of one (1) year from date of delivery. Hill-Rom's obligation under this warranty is expressly limited to supplying replacement parts and/or service for, or replacing, at its option, any product which is, in the sole discretion of Hill-Rom, found to be defective. In addition to the foregoing one year warranty, Hill-Rom warrants to the original purchaser that the frame and welds on its products will be free from structural defects for the life of the product. Any product upgrade or modification initiated by Hill-Rom does not affect the original product warranty.

SPECIFIC WARRANTIES

MATTRESS WARRANTIES

Hill-Rom warrants to the original purchaser that its mattress product shall be free from defects in material and workmanship for a period of two (2) years from date of delivery. However, electro mechanical mattress components (compressors, valves, printed circuit boards, hoses, and couplers) are covered by the general one (1) year warranty.

EXPENDABLES WARRANTIES

A sixty (60) day limited warranty from date of delivery applies to expendable parts such as cushions, coverlets, software diskettes, locator badge batteries, dome light incandescent bulbs, overhead fluorescent tubes, heating elements, temperature probes, filter sheets, and microspheres. This warranty is limited to replacement of the parts covered.

TO OBTAIN PARTS AND SERVICE

In the United States, call Hill-Rom Technical Support Department at (800) 445-3720, Monday through Friday. In Canada, call Hill-Rom Technical Support Department at (800) 267-2337, Monday through Friday. Outside the United States and Canada, call your authorized Hill-Rom Distributor. In order to expedite service, we request you furnish the following information: customer identification number, product model number, serial number, and description of problem. A qualified specialist will provide, via telephone (United States and Canada), or FAX (Outside the United States and Canada), troubleshooting assistance for facility personnel and provide necessary parts to make repairs. If troubleshooting determines the need for on-site technical service, a qualified service representative will be dispatched. Replacement of non-technical items will be the responsibility of the customer. If requested by Hill-Rom, products or parts for which a warranty claim is made shall be returned prepaid to Hill-Rom's factory.

OUT OF WARRANTY EXCHANGE POLICY

After the expiration of the original warranty, upon request, Hill-Rom will ship as a replacement, components such as selected: motors and printed circuit boards, for like units returned to Hill-Rom by the original purchaser at a substantial savings. Please call Hill-Rom Technical Support Department for current pricing.

PARTS AVAILABILITY POLICY

Hill-Rom will offer parts for new and remanufactured products for ten (10) years from date of sale; for communications products for five (5) years from date of sale.

Note: Some original component parts and assemblies may not be available; functional equivalents may be substituted.

THE FOREGOING WARRANTIES ARE EXCLUSIVE AND IN LIEU OF ALL OTHER EXPRESS WARRANTIES AND IMPLIED WARRANTIES, INCLUDING BUT NOT LIMITED TO, THE IMPLIED WARRANTIES OF MERCHANTABILITY AND FITNESS OF PURPOSE. HILL-ROM'S OBLIGATION UNDER THESE WARRANTIES SHALL NOT INCLUDE ANY LIABILITY FOR LOSS OF PROFITS, DIRECT, INDIRECT OR CONSEQUENTIAL DAMAGES OR DELAYS. Some states, provinces, or countries do not allow the exclusion or

limitation of incidental or consequential damages, so the above exclusion or limitation may not apply. Any improper or negligent use, any alterations or repairs not in accordance with Hill-Rom's manuals or performed by others in such manner as in Hill-Rom's sole judgment affects the product materially and adversely, shall void these warranties. These warranties do not cover failures due to misuse, abuse, neglect, or lack of routine maintenance. No employee or representative of Hill-Rom is authorized to change these warranties in any way or grant any other warranty unless in writing and signed by a Hill-Rom officer. These warranties provide specific legal rights; but, there may be other available rights, which vary from state to state, province to province, or country to country.

Revised July 6, 2001

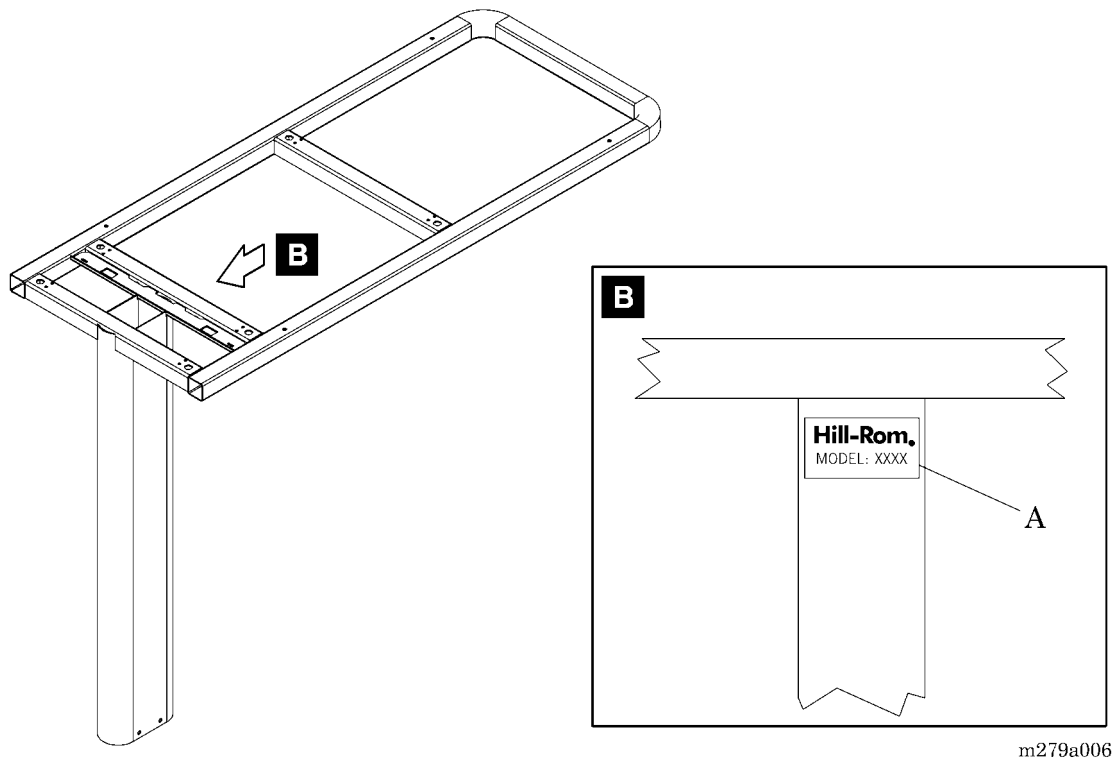
Hill-Rom Company, Inc., 1069 State Route 46 E, Batesville, IN 47006-9167

NOTES:

Service Parts Ordering

Using the parts lists in this manual, identify the part number(s) you require. Find the product number and serial number on the product identification label (A) (see figure 3-1 on page 3-5).

Figure 3-1. Product Identification Label Location



Call Hill-Rom Customer Service at (800) 445-3720 with the following information:

- Purchase order number
- Six-digit customer account number
- Product number
- Serial number
- Part number(s)

To promptly order parts, request part prices and availability, or follow up on a service order, use the following Hill-Rom fax number:

(812) 934-8472

Terms:

- Net 30 days
- F.O.B. Batesville, IN
- Prepaid shipping charges added to invoice
- All orders shipped UPS ground unless specified

Address all inquiries to:

ATTN TECHNICAL SUPPORT—PARTS
HILL-ROM COMPANY, INC.
1069 STATE ROUTE 46 E
BATESVILLE IN 47006-9167

Address all return goods to:

ATTN SERVICE STORES
DISTRIBUTION CENTER DOOR D23
HILL-ROM COMPANY, INC.
COUNTY ROAD 300E
BATESVILLE IN 47006-9167

NOTE:

To eliminate possible delays or incorrect billings, **do not** return any items without a Return Material Authorization (RMA) number. When a return is requested, an RMA packet is included with each order. This packet includes an RMA number, instructions, and a shipping label. If an RMA number is not available, obtain one by phoning Hill-Rom Technical Support at (800) 445-3720.

Exchange Policy

The following are policies for in-warranty and out-of-warranty exchanges from Hill-Rom.

In-Warranty Exchanges

In some cases, Hill-Rom will request that parts/products be returned for inspection. When this occurs, you are expected to return parts/products within 30 days of receipt of the exchange part. If you fail to return the inoperative parts/products within the 30 day period, Hill-Rom will invoice your facility for the full selling price of the parts/products.

NOTE:

The preceding billing procedure pertains **only** to parts/products that Hill-Rom requests to be returned.

In some cases, the invoice accompanying the parts will show the full selling price (only for internal use at Hill-Rom). Do not confuse this price with your price.

Do not return any parts without an RMA number. When parts/products have been requested to be returned, Hill-Rom will include an RMA packet with the parts/products shipment. If an RMA number is not available, obtain one by phoning Hill-Rom Technical Support at (800) 445-3720.

Out-of-Warranty Exchanges

You are expected to return the inoperative parts/products within 30 days of receipt of the exchange part. Hill-Rom will include an RMA packet with the parts/products shipment. If an RMA number is not available, obtain one by phoning Hill-Rom Technical Support at (800) 445-3720. Hill-Rom will invoice your facility for the full selling price of the parts/products. Upon return of the inoperative parts/products, Hill-Rom will issue a credit to your facility for **the difference between the exchange price and the full selling price of the parts/products**.

Recommended Spare Parts

For a recommended spare parts list to service 50 or more units, see table 3-1 on page 3-8.

Table 3-1. Recommended Spare Parts for All Tables

Part Number	Quantity	Description
34866-48 (630)	5	Release knob, rh
34867-48 (630)	5	Release knob, lh
66834 (630)	20	Screw
34872 (630)	20	Slide button
37058 (630)	4	Caster stem
34826	4	Caster (50 mm)
70149	3	Caster (35 mm)
SA1280 (630) or SA1281 (631) or SA1282 (632)	3	Gas spring and ring (P630 tables) Gas spring and ring (P631 tables) Gas spring and ring (P632 tables)
19678 (630)	10	Truarc ring
26714 (630)	2	Tray and mirror assembly (sliding)
34828-48 (630)	4	Mirror assembly (flip-up)
32960 (630)	8	Pushnut
4179 (630)	4	Hairpin cotter key
35707 (630)	8	Roll pin
6019750 (630)	2	Base cover
42932 (631)	2	Cam ramp assembly (P631 and P632 tables)
SA1269-48 (631)	5	FST knob w/screw, rh (P631 and P632 tables)
SA1270-48 (631)	5	FST knob w/screw, lh (P631 and P632 tables)
SA1268-48 (631)	5	Release knob w/screw (P631 and P632 tables)

NOTES:

P630 Overbed Table

Figure 3-2. P630 Overbed Table

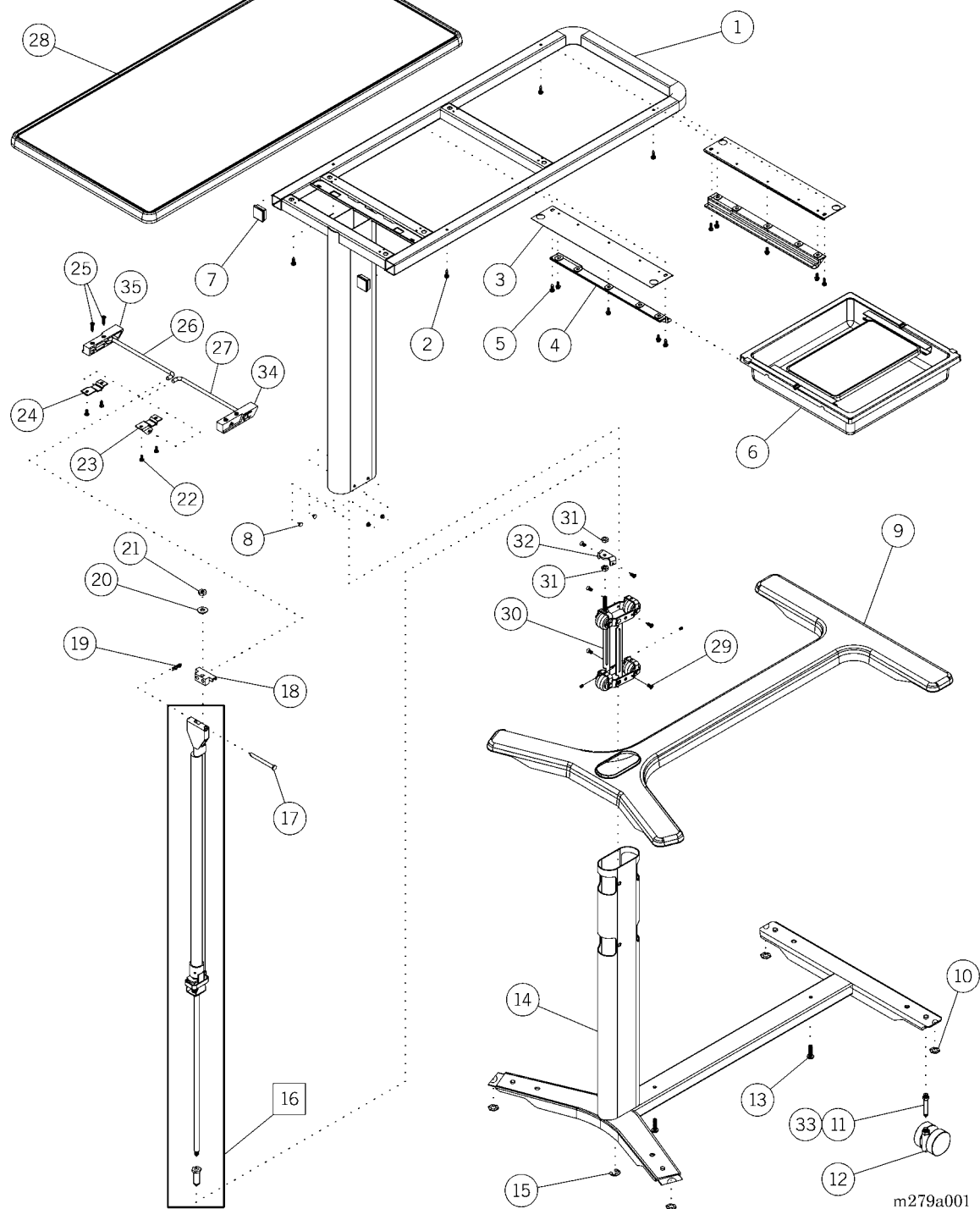


Table 3-2. P630 Overbed Table

Item Number	Part Number	Quantity	Description
1	44674 (630)	1	Top frame
2	10595 (630)	4	Screw
3	34753 (630)	2	Guide bracket
4	8837 (630)	2	Guide rail
5	10595 (630)	10	Screw
6	26714 (630) or 26711 (630) 26705 (630)	1	Tray and mirror assembly Mirror assembly Tray
7	34931 (630)	2	Plug
8	34872 (630)	4	Slide button
9	6019750 (630)	1	Base cover
10	32960 (630)	4	Pushnut
11	37058 (630)	4	Caster stem
12	34826 (630)	4	Caster
13	60408 (630)	2	Screw
14	41598 (630)	1	Base assembly
15	19678 (630)	1	Truarc ring
16	SA1280 (630)	1	Gas spring assembly
17	36996 (630)	1	Clevis pin
18	35505 (630)	1	Paddle
19	4179 (630)	1	Hair pin cotter pin
20	10429 (630)	1	Nylon washer
21	777 (630)	1	Locknut, hex
22	4759 (630)	4	Screw
23	34698 (630)	1	Bracket, rh
24	34699 (630)	1	Bracket, lh
25	66834 (630)	4	Screw
26	3508048 (630)	1	Release rod assembly, lh
27	3507948 (630)	1	Release rod assembly, rh

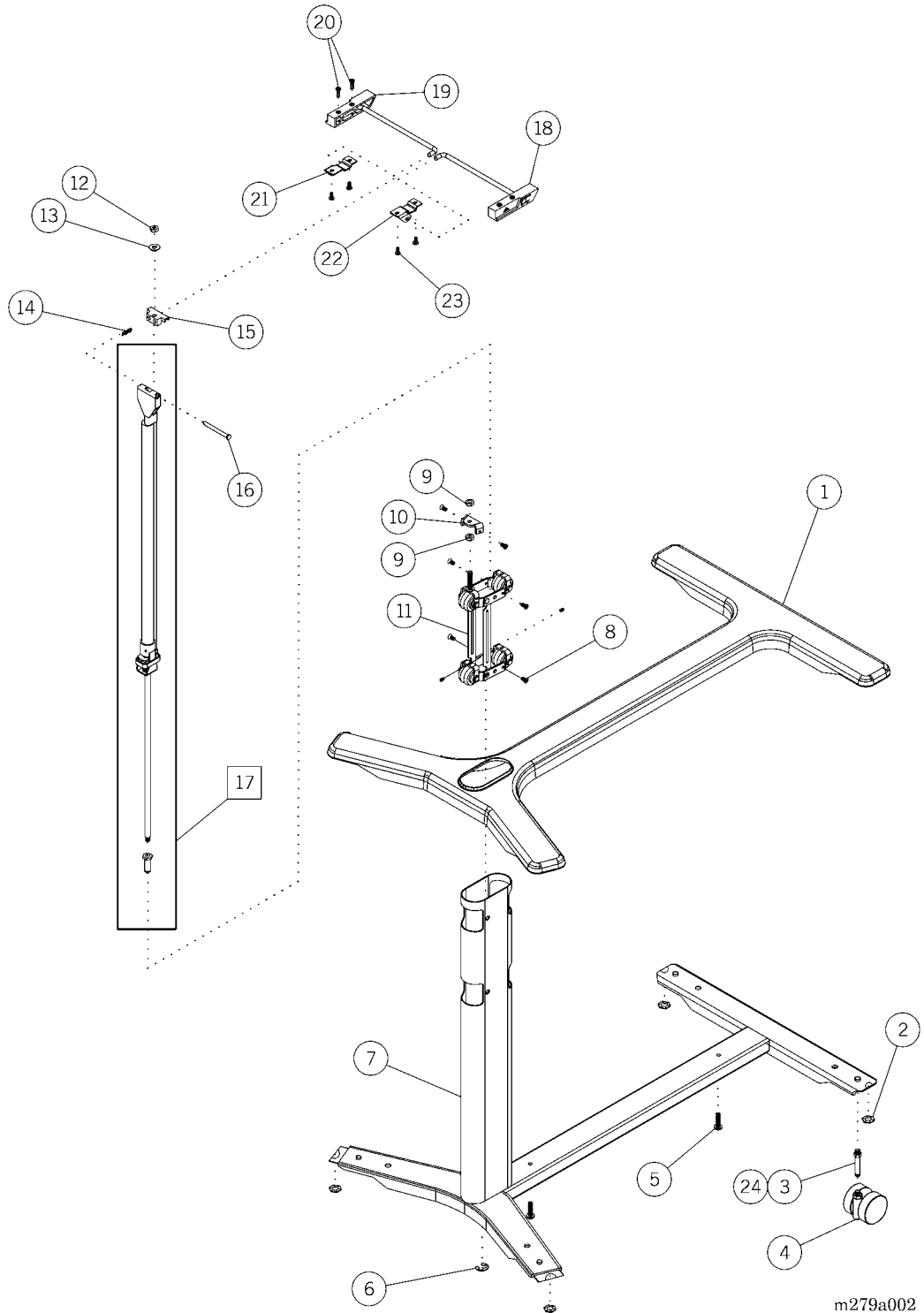
Item Number	Part Number	Quantity	Description
28	11280201†† (630) or 112496†† (630)	1	Top (Urethane edge) Top (t-molding edge)
29	22400 (630)	6	Screw
30	34799 (630)	1	Roller assembly
31	90234-04 (630)	2	Nut
32	34765 (630)	1	Anchor bracket
33	SA4841 (630)	As required	Loctite® ^a adhesive
34	34866 (630)	1	Release knob, rh
35	34867 (630)	1	Release knob, lh

a. Loctite® is a registered trademark of Loctite Corporation.

NOTES:

PatientMate® Jr. Overbed Table (P631) (Sheet 1 of 2)

Figure 3-3. PatientMate® Jr. Overbed Table (P631) (Sheet 1 of 2)



m279a002

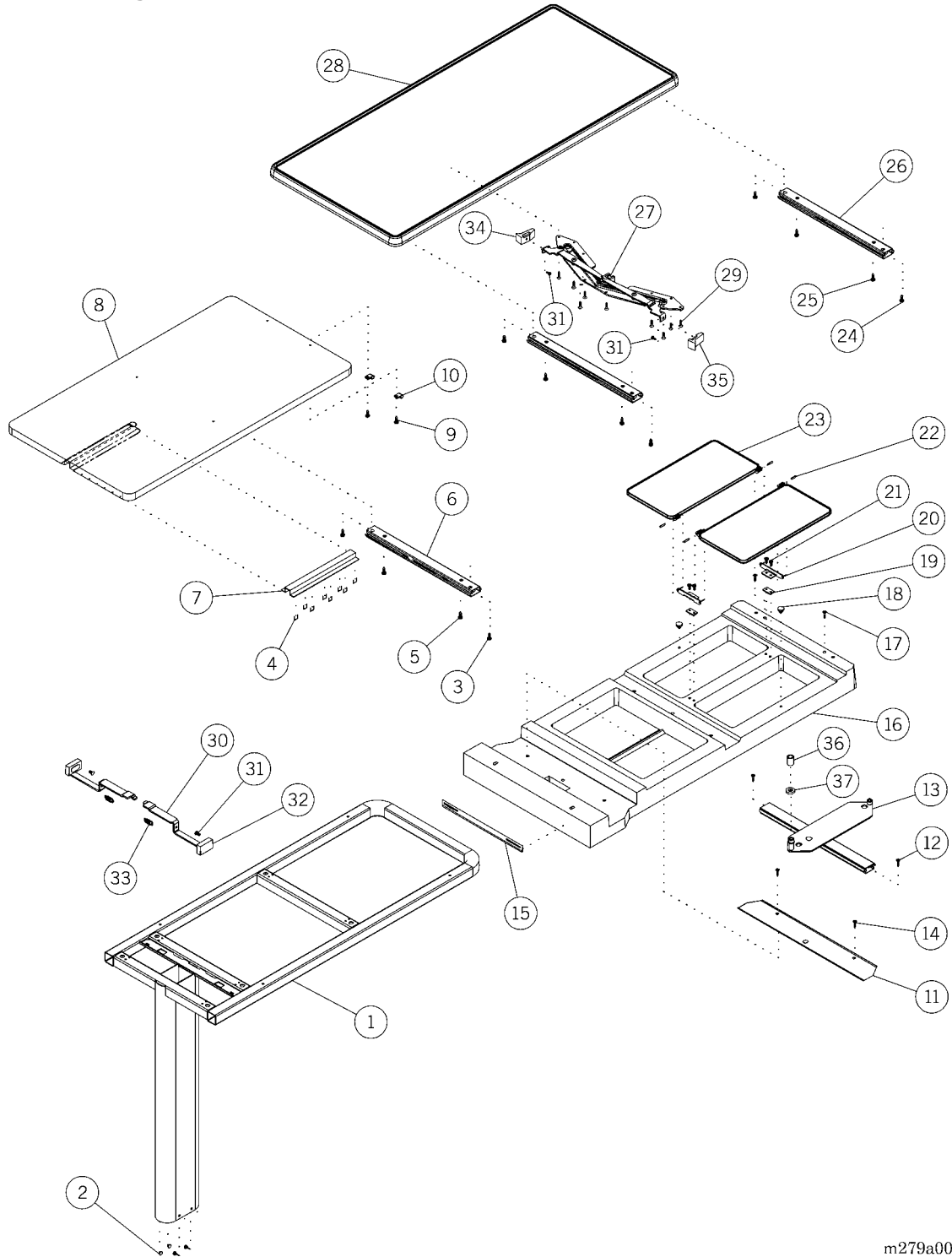
Table 3-3. PatientMate® Jr. Overbed Table (P631) (Sheet 1 of 2)

Item Number	Part Number	Quantity	Description
1	6019750 (631)	1	Base cover
2	32960 (631)	4	Pushnut
3	37058 (631)	4	Caster stem
4	34826 (631)	4	Caster
5	60408 (631)	2	Screw
6	19678 (631)	1	Tru-arc ring
7	4159833 (631)	1	Base assembly
8	22400 (631)	6	Screw
9	90234-04 (631)	2	Nut
10	34765 (631)	1	Anchor bracket
11	34799 (631)	1	Roller assembly
12	777 (631)	1	Locknut, hex
13	10429 (631)	1	Nylon washer
14	4179 (631)	1	Cotter pin
15	35505 (631)	1	Paddle
16	36996 (631)	1	Clevis pin
17	SA1281 (631)	1	Gas spring assembly
18	3507948 (631)	1	Release rod assembly, rh
19	3508048 (631)	1	Release rod assembly, lh
20	66834 (631)	4	Screw
21	34699 (631)	1	Bracket, rh
22	34698 (631)	1	Bracket, lh
23	4759 (631)	4	Screw
24	8651 (631)	As required	Loctite® ^a adhesive

a. Loctite® is a registered trademark of Loctite Corporation.

PatientMate® Jr. Overbed Table (P631) (Sheet 2 of 2)

Figure 3-4. PatientMate® Jr. Overbed Table (P631) (Sheet 2 of 2)



m279a003

Table 3-4. PatientMate® Jr. Overbed Table (P631) (Sheet 2 of 2)

Item Number	Part Number	Quantity	Description
1	44674-48 (631)	1	Top frame
2	34872 (631)	4	Slide button
3	90036-12 (631)	2	Screw
4	27909 (631)	8	Staple (installed in item 8)
5	10595 (631)	2	Screw
6	46270 (631)	1	Short top slide
7	34728 (631)	1	Bearing guide (installed in item 8)
8	44524†† (631) or 44593†† (631)	1 or 1	Food service tray (T-molding edge) Food service tray (white urethane edge)
9	10595 (631)	2	Screw
10	44274 (631)	2	Spring clip
11	34741 (631)	1	Stainless steel plate
12	90036-08 (631)	2	Screw
13	34794 (631)	1	Pivot slide assembly
14	9003628 (631)	2	Screw
15	39398 (631)	1	Label
16	44676-48 (631)	1	Vanity tray
17	9003628 (631)	2	Screw
18	35706 (631)	2	Bumper
19	34802 (631)	2	Anchor plate
20	34800 (631)	2	Mirror bracket
21	4759 (631)	4	Screw
22	35707 (631)	4	Roll pin
23	34828-48 (631)	2	Mirror assembly
24	90036-12 (631)	4	Screw
25	10595 (631)	4	Screw
26	46269 (631)	2	Top slide
27	42932 (631)	1	Cam ramp assembly
28	36713†† (631) or 44591†† (631)	1 or 1	Top-drilled (T-molding edge) Top-drilled (white urethane edge)

Chapter 3: Parts List

Item Number	Part Number	Quantity	Description
29	90273-09 (631)	9	Wood screw
30	36924 (631)	2	Release bar, vanity
31	27671 (631)	4	Screw
32	36911 (631)	2	Release knob-vanity
33	22610 (631)	2	Spring
34	36987-48 (631)	1	Knob, food tray, rh
35	36928 (631)	1	Knob, food tray, lh
36	34735 (631)	1	Bearing
37	10429 (631)	1	Washer

†† Specify wood and laminate finish when ordering.

NOTES:

PatientMate® Overbed Table (P632) (Sheet 1 of 2)

Figure 3-5. PatientMate® Overbed Table (P632) (Sheet 1 of 2)

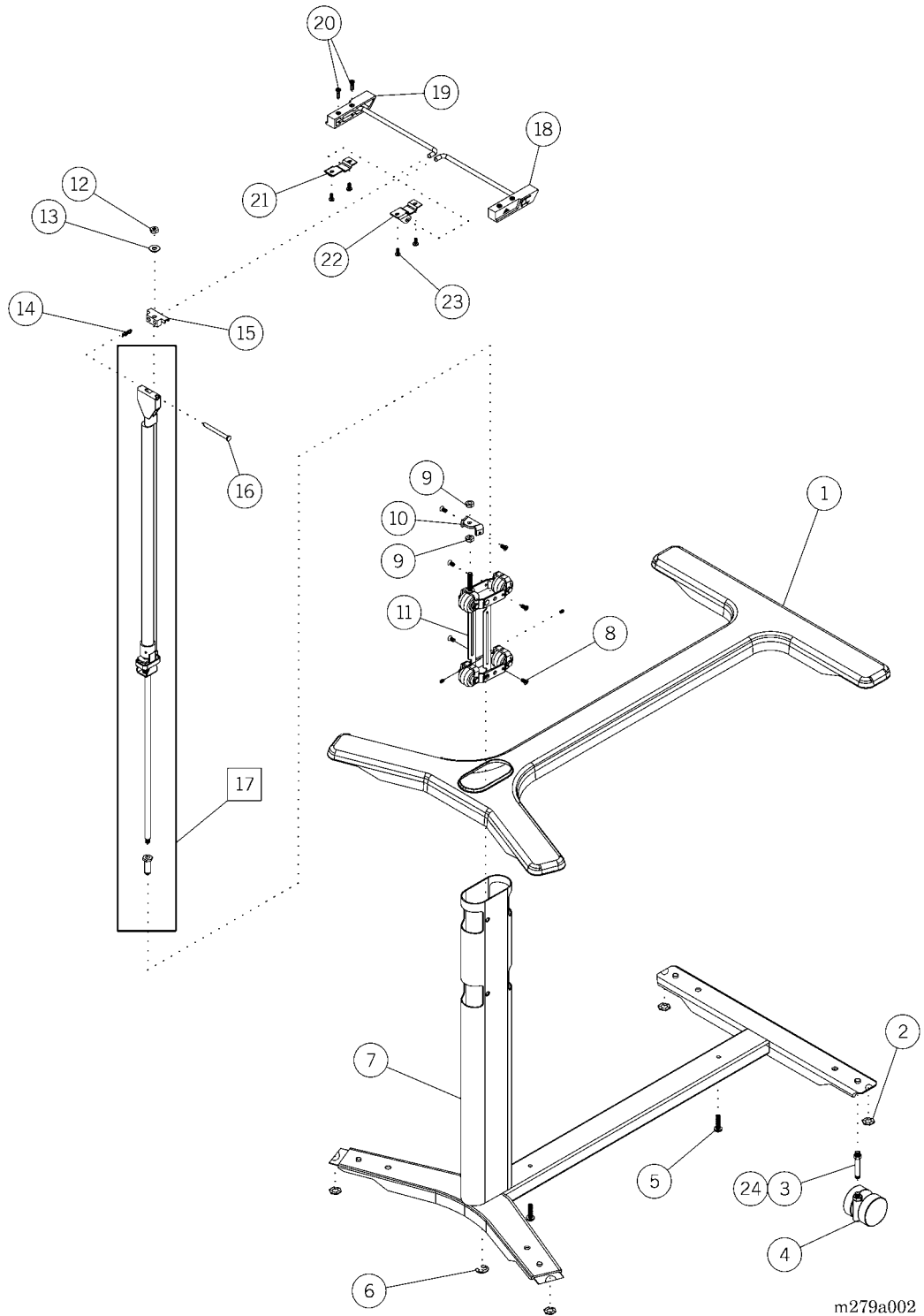


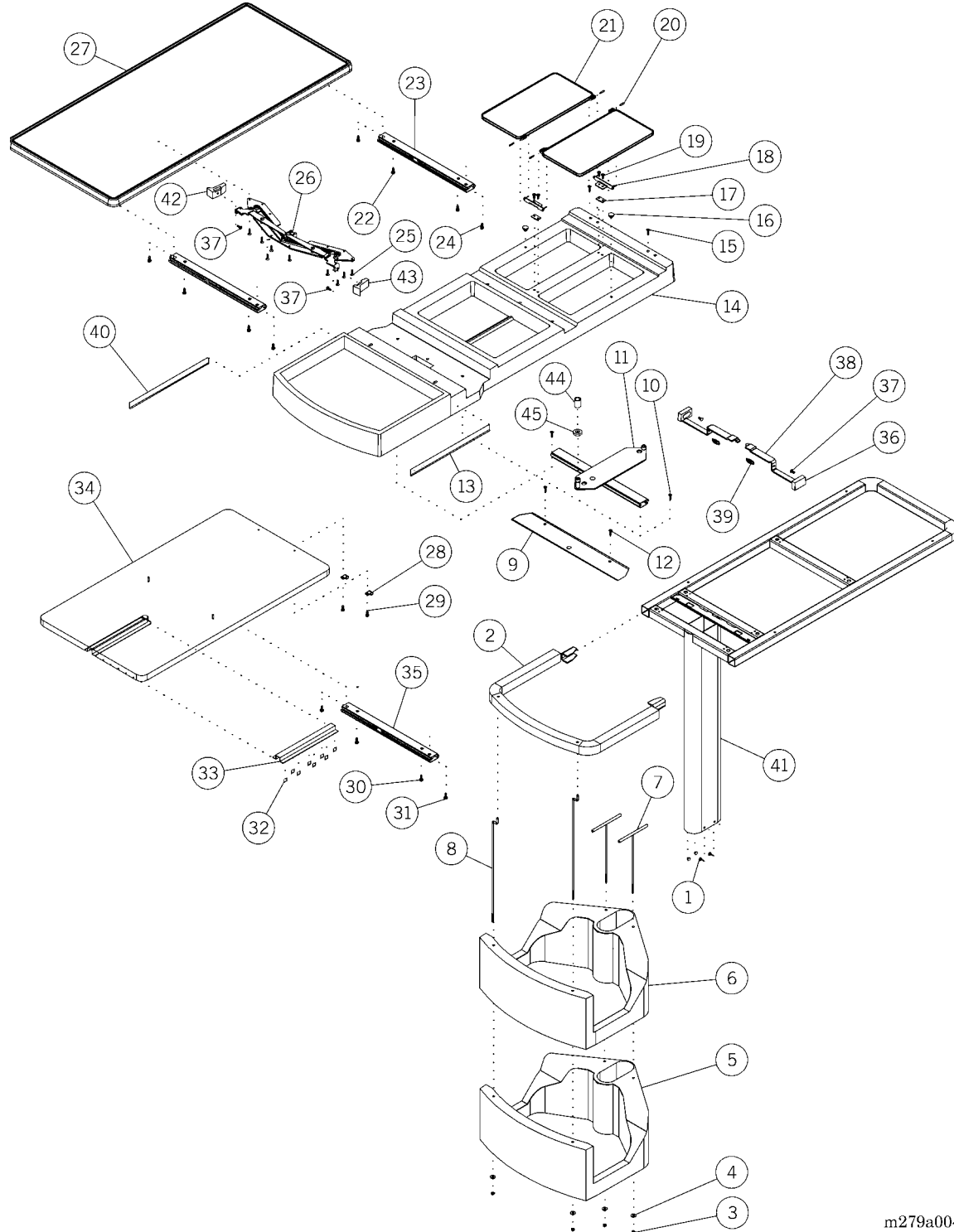
Table 3-5. PatientMate® Overbed Table (P632) (Sheet 1 of 2)

Item Number	Part Number	Quantity	Description
1	6019750 (632)	1	Base cover
2	32960 (632)	4	Pushnut
3	37058 (632)	4	Caster stem
4	34826 (632)	4	Caster
5	60408 (632)	2	Screw
6	19678 (632)	1	Tru-arc ring
7	4159833 (632)	1	Base assembly
8	22400 (632)	6	Screw
9	90234-04 (632)	2	Nut
10	34765 (632)	1	Anchor bracket
11	34799 (632)	1	Roller assembly
12	777 (632)	1	Locknut, hex
13	10429 (632)	1	Nylon washer
14	4179 (632)	1	Cotter pin
15	35505 (632)	1	Paddle
16	36996 (632)	1	Clevis pin
17	SA1281 (632)	1	Gas spring assembly
18	3507948 (632)	1	Release rod assembly, rh
19	3508048 (632)	1	Release rod assembly, lh
20	66834 (632)	4	Screw
21	34699 (632)	1	Bracket, rh
22	34698 (632)	1	Bracket, lh
23	4759 (632)	4	Screw
24	8651 (632)	As required	Loctite® ^a adhesive

a. Loctite® is a registered trademark of Loctite Corporation.

PatientMate® Overbed Table (P632) (Sheet 2 of 2)

Figure 3-6. PatientMate® Overbed Table (P632) (Sheet 2 of 2)



m279a004

Table 3-6. PatientMate® Overbed Table (P632) (Sheet 2 of 2)

Item Number	Part Number	Quantity	Description
1	34872 (632)	4	Slide button
2	34863 (632)	1	Extension frame assembly
3	755 (632)	4	Lock nut
4	2449 (632)	4	Washer
5	34955-48 (632)	1	Lower saddle tray assembly
6	34954-48 (632)	1	Upper saddle tray assembly
7	35077 (632)	2	Tie rod assembly
8	34879 (632)	2	Tie rod back
9	34741 (632)	1	Stainless steel plate
10	90036-08 (632)	2	Screw
11	34794 (632)	1	Pivot slide assembly
12	9003628 (632)	2	Screw
13	39399 (632)	1	Label, lh
14	44677-48 (632)	1	Vanity tray
15	9003628 (632)	2	Screw
16	35706-48 (632)	2	Mirror bumper
17	34802 (632)	2	Anchor plate
18	34800 (632)	2	Mirror bracket
19	4759 (632)	4	Screw
20	35707 (632)	4	Roll pin
21	34828-48 (632)	2	Mirror assembly
22	10595 (632)	4	Screw
23	46269 (632)	2	Top slide
24	9003612 (632)	4	Screw
25	90273-09 (632)	9	Wood screw
26	42932 (632)	1	Cam ramp assembly
27	36713†† (632) or 44591†† (632)	1 or 1	Top (T-molding edge) Top (white urethane edge)
28	44274 (632)	2	Spring clip
29	10595 (632)	2	Screw
30	10595 (632)	2	Screw

Chapter 3: Parts List

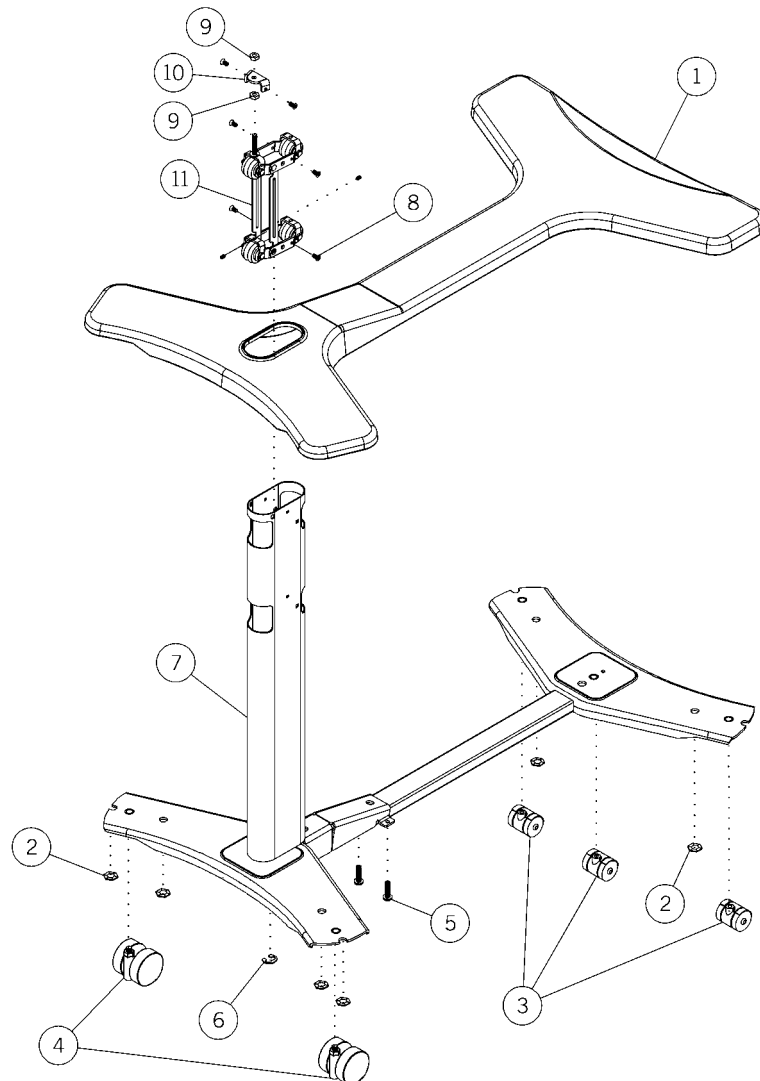
Item Number	Part Number	Quantity	Description
31	90036-12 (632)	2	Screw
32	27909 (632)	8	Staple (installed in item 34)
33	34728 (632)	1	Bearing guide (installed in item 34)
34	44524†† (632) or 44593†† (632)	1 or 1	Food service tray-drilled (T-molding edge) Food service tray-drilled (white urethane edge)
35	46270 (632)	1	Short top slide
36	36911 (632)	2	Release knob, vanity
37	27671 (632)	4	Screw
38	36924 (632)	2	Release bar, vanity
39	22610 (632)	1	Spring
40	39400 (632)	1	Label, rh
41	44674 (632)	1	Top frame
42	36987-48 (632)	1	Knob, food tray, rh
43	36928-48 (632)	1	Knob, food tray, lh
44	34735 (632)	1	Bearing
45	10429 (632)	1	Washer

†† Specify wood and laminate finish when ordering.

NOTES:

Base Frame (New Style Base)

Figure 3-7. Base Frame (New Style Base)



m279a031

Table 3-7. Base Frame (New Style Base)

Item Number	Part Number	Quantity	Description
1	70039 (635)	1	Base cover
2	32960 (635)	6	Pushnut
3	70149 (635)	3	Caster (35 mm)
4	34826 (635)	2	Caster
5	70614 (635)	2	Screw
6	19678 (635)	1	Truarc ring
7	69920 (635)	1	Base assembly
8	22400 (635)	6	Screw
9	90234-04 (635)	2	Nut
10	34765 (635)	1	Anchor bracket
11	34799 (635)	1	Roller assembly

NOTES:
