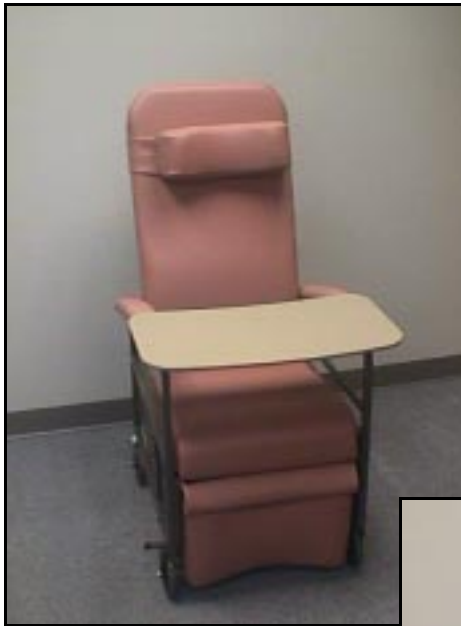


# SERVICE MANUAL

## Senior Seating™ Collection From Hill-Rom®



**Product No. P530/P540/P550 Series**

# ***Senior Seating Collection Service Manual***

---

## **Revisions**

<b>Revision Letter</b>	<b>Pages Affected</b>	<b>Date</b>
Original Issue		March, 1996

man124

COPYRIGHT© 1996 HILL-ROM®, INC.

All rights reserved. No part of this text shall be reproduced or transmitted in any form or by any means, electronic or mechanical, including photocopying, recording, or by any information or retrieval system without written permission from HILL-ROM COMPANY, INC. (Hill-Rom).

First Edition

First Printing 1996

Printed in the USA

Hill-Rom® is a registered trademark of Hill-Rom Company, Inc.

Senior Seating™ is a trademark of Hill-Rom Company, Inc.

PostureRest™ is a trademark of Hill-Rom Company, Inc.

PostureRest Plus™ is a trademark of Hill-Rom Company, Inc.

Posture Perfect™ is a trademark of Hill-Rom Company, Inc.

The information contained in this manual is subject to change without notice. Hill-Rom makes no commitment to update or keep current, the information contained in this manual.

The only product warranty intended by Hill-Rom is the express, written warranty accompanying the bill of sale to the original purchaser. Hill-Rom makes no other warranty, express or implied, and in particular, makes no warranty of merchantability or fitness for any particular purpose.

Additional copies of this manual can be obtained from Hill-Rom.

# ***Table of Contents***

## **Chapter 1: Introduction**

Purpose of this Manual . . . . .	1 - 3
Who Should Use this Manual . . . . .	1 - 3
Organization of this Manual . . . . .	1 - 3
Chapter 1: Introduction . . . . .	1 - 3
Chapter 2: Parts List . . . . .	1 - 3
Typographical Conventions Used in this Manual. . . . .	1 - 4
Introduction to the Senior Seating Collection. . . . .	1 - 5
Overview. . . . .	1 - 5
Cleaning and Care. . . . .	1 - 5
General Cleaning . . . . .	1 - 5
Steam Cleaning . . . . .	1 - 5
Hard to Clean Spots . . . . .	1 - 5
Disinfection. . . . .	1 - 5
Preventive Maintenance . . . . .	1 - 6
Preventive Maintenance Schedule . . . . .	1 - 6
Preventive Maintenance Checklist . . . . .	1 - 7
Lubrication Requirements. . . . .	1 - 8
Adjustments . . . . .	1 - 9
PostureRest Specialty Chair . . . . .	1 - 9
Brake Adjustment . . . . .	1 - 9
PostureRest Plus Specialty Chair . . . . .	1 - 10
Brake Adjustment . . . . .	1 - 10
Brake Cam Adjustment. . . . .	1 - 10
Posture Perfect Specialty Chair . . . . .	1 - 11
Brake Adjustment . . . . .	1 - 11
Seat Depth Adjustment . . . . .	1 - 12

Tilt-In-Space Adjustment .....	1 - 13
Specifications .....	1 - 14
Physical Description .....	1 - 14
UL Classification .....	1 - 15
Model Identification .....	1 - 15
Warning and Caution Labels .....	1 - 15
Accessory Assembly Instructions .....	1 - 16
Padded Positioning Panels (PostureRest)—P475A .....	1 - 16
IV Pole and Holder (PostureRest and PostureRest Plus)—P470A .....	1 - 16
Tray Table (Posture Perfect)—P471A .....	1 - 17
Handwheel Resident Lockout (Posture Perfect)—P472A .....	1 - 18
Pommel Seat (All Model Chairs)—P469A, P473A, and P474A .....	1 - 19
Shoulder Bolsters (C) (All Model Chairs)—P467A and P476A .....	
Body Bolsters (B) (All Model Chairs)—P468A and P477A .....	1 - 20

## **Chapter 2: Parts List**

Warranty .....	2 - 3
Ordering Service Parts .....	2 - 5
Exchange Policy .....	2 - 7
In-Warranty Exchanges .....	2 - 7
Out-of-Warranty Exchanges .....	2 - 7
Recommended Spare Parts .....	2 - 7
Brake and Wheel Assembly (PostureRest Plus) .....	2 - 8
Brake and Wheel Assembly (PostureRest) .....	2 - 10
Brake Assembly (PostureRest) .....	2 - 12
Side Assembly With Wheel (Posture Perfect) .....	2 - 14
Side and H-Frame Assemblies (Posture Perfect) .....	2 - 18
Seat Frame Assembly (PostureRest Plus and PostureRest) .....	2 - 22
Backrest Assembly (PostureRest Plus and PostureRest) .....	2 - 24
Backrest Assembly (Posture Perfect) .....	2 - 26
Armrest Assembly (PostureRest Plus and PostureRest) .....	2 - 28
Side Panel Assembly (PostureRest) .....	2 - 30

Side Panel (PostureRest Plus) . . . . .	2 - 32
Legrest Assembly (PostureRest Plus and PostureRest) . . . . .	2 - 34
Removable Foot Support Assembly (PostureRest Plus)— P/N 2500-109 . . . . .	2 - 36
Foot Support Assembly (Posture Perfect)—P/N 2500-170 . . . . .	2 - 38
Shoulder Bolster Set . . . . .	2 - 40
Body Bolster Set . . . . .	2 - 42
Privacy Panel Cushions (PostureRest and PostureRest Plus) . . . . .	2 - 44
Privacy Panel Assembly (Posture Prefect)—P/N 2500-168 . . . . .	2 - 46
Pommel Seat Cushion (PostureRest) . . . . .	2 - 48
Pommel Seat Cushion (Posture Perfect and PostureRest Plus) . . . . .	2 - 50
Cushion . . . . .	2 - 52
Tray Assembly (PostureRest Plus and PostureRest) . . . . .	2 - 54
Tray Assembly (Posture Perfect)—P/N 2500-167 . . . . .	2 - 56
Contoured Headrest Assembly . . . . .	2 - 58
IV Holder—P/N 2500-125 . . . . .	2 - 60
Rear Stabilizer . . . . .	2 - 62

**NOTES:**

---

# Chapter 1

## Introduction

---

### Chapter Contents

Purpose of this Manual . . . . .	1 - 3
Who Should Use this Manual . . . . .	1 - 3
Organization of this Manual . . . . .	1 - 3
Chapter 1: Introduction . . . . .	1 - 3
Chapter 2: Parts List . . . . .	1 - 3
Typographical Conventions Used in this Manual. . . . .	1 - 4
Introduction to the Senior Seating Collection. . . . .	1 - 5
Overview. . . . .	1 - 5
Cleaning and Care. . . . .	1 - 5
General Cleaning . . . . .	1 - 5
Steam Cleaning . . . . .	1 - 5
Hard to Clean Spots . . . . .	1 - 5
Disinfection. . . . .	1 - 5
Preventive Maintenance . . . . .	1 - 6
Preventive Maintenance Schedule . . . . .	1 - 6
Preventive Maintenance Checklist . . . . .	1 - 7
Lubrication Requirements. . . . .	1 - 8
Adjustments . . . . .	1 - 9
PostureRest Specialty Chair . . . . .	1 - 9
Brake Adjustment . . . . .	1 - 9
PostureRest Plus Specialty Chair . . . . .	1 - 10
Brake Adjustment . . . . .	1 - 10
Brake Cam Adjustment. . . . .	1 - 10



Posture Perfect Specialty Chair .....	1 - 11
Brake Adjustment .....	1 - 11
Seat Depth Adjustment .....	1 - 12
Tilt-In-Space Adjustment .....	1 - 13
Specifications .....	1 - 14
Physical Description .....	1 - 14
UL Classification .....	1 - 15
Model Identification .....	1 - 15
Warning and Caution Labels .....	1 - 15
Accessory Assembly Instructions .....	1 - 16
Padded Positioning Panels (PostureRest)—P475A .....	1 - 16
IV Pole and Holder (PostureRest and PostureRest Plus)—P470A .....	1 - 16
Tray Table (Posture Perfect)—P471A .....	1 - 17
Handwheel Resident Lockout (Posture Perfect)—P472A .....	1 - 18
Pommel Seat (All Model Chairs)—P469A, P473A, and P474A .....	1 - 19
Shoulder Bolsters (C) (All Model Chairs)—P467A and P476A	
Body Bolsters (B) (All Model Chairs)—P468A and P477A .....	1 - 20

---

## **Purpose of this Manual**

This manual provides the information required for Hill-Rom Senior Seating Collection normal operation and maintenance. It also includes a complete parts list for ordering replacement components. The parts list is located in chapter 2.

---

## **Who Should Use this Manual**

This manual is intended to be used by facility authorized maintenance personnel only. Failure to observe this restriction can result in serious damage to material and/or severe injury to people.

---

## **Organization of this Manual**

This manual contains two chapters.

### **Chapter 1: Introduction**

You are currently reading chapter 1. This chapter defines the manual's purpose and who should use the information in the manual. Major topics in this chapter are:

- Purpose of this manual
- Who should use this manual
- Organization of this manual
- Typographical conventions used in this manual
- Introduction to the Senior Seating Collection
- Cleaning and care
- Preventive maintenance
- Lubrication requirements
- Adjustments
- Product specifications
- Accessory assembly instructions

### **Chapter 2: Parts List**

Chapter 2 contains Hill-Rom's warranty, replacement part-ordering procedure, and illustrated parts lists.

---

## Typographical Conventions Used in this Manual

This manual contains different typographical conventions designed to enhance readability and understanding of its content. Note the following examples:

- Standard text—used for standard text throughout the manual.
- **Boldface text**—emphasizes a word or phrase.
- **NOTE:**—sets apart special information or important instruction clarification.
- The symbol below highlights a CAUTION or WARNING:

**Figure 1-1. Caution and Warning Symbol**



- A CAUTION points out special procedures or precautions that service personnel must follow to avoid equipment damage.
  - A WARNING identifies situations or actions that may affect patient or user safety. Disregarding a warning could result in patient or user injury.
- The symbol below highlights an electrical shock hazard WARNING.

**Figure 1-2. Electrical Shock Hazard WARNING**



---

## **Introduction to the Senior Seating Collection**

### **Overview**

The Senior Seating Collection consists of three therapeutic positioning chairs: PostureRest specialty chair, PostureRest Plus specialty chair, and the Posture Perfect specialty chair. Each chair is specifically designed for the non-ambulatory resident. Each chair features an independently operated leg rest, tilt-in-space position change, and optional positioning accessories designed to provide correct postural support.

---

## **Cleaning and Care**

### **General Cleaning**

Clean the unit with a lightly dampened cloth and ordinary disinfectants. Do not subject any area to excessive amounts of liquid.

### **Steam Cleaning**

Do not use any steam cleaning device on the Senior Seating Collection. The excessive moisture involved can damage mechanisms and components in the unit.

### **Hard to Clean Spots**

Use standard household cleaners and/or a soft bristle brush to remove troublesome spots or stains. Heavy dried-on soil and excreta may first require soaking to loosen.



#### **CAUTION:**

Do not use harsh cleaners, solvents, or detergents.

### **Disinfection**

Dilute disinfectants and/or germicides as specified on the manufacturer's label.

---

## Preventive Maintenance

The Senior Seating Collection must have an effective maintenance program. We recommend that you perform preventive maintenance and testing for Joint Commission on Accreditation of Healthcare Organizations (JCAHO) biannually. This not only meets JCAHO requirements, but will help to ensure a long and productive life for the Senior Seating Collection. This will help minimize downtime due to excessive wear failures.

The preventive maintenance schedule that follows is intended to guide the technician through a normal preventive maintenance procedure on the Senior Seating Collection. Check each item on the schedule, and make any necessary adjustments during the preventive maintenance process.

The preventive maintenance schedule is intended to be used in conjunction with the preventive maintenance checklist following it. This checklist is designed to keep a running history of maintenance and subsequent repair costs for one individual specialty chair. However, the facility can modify this checklist or invent another to fit their needs. Keeping close records and maintaining the Senior Seating Collection and its accessories are two good ways of reducing downtime, and at the same time, keeping the nursing staff happy and efficient.

### Preventive Maintenance Schedule

**Table 1-1. Preventive Maintenance Schedule**

<b>Function</b>	<b>Procedure</b>
Chair functions	Ensure all chair functions operate properly.
Brakes	Check for proper braking, and adjust if required.
Cushions	Inspect for punctures, cuts, or tears.
Overall appearance	Check the general aesthetics of the chair.
Lubrication	See “Lubrication Requirements” on page 1-8.

## Preventive Maintenance Checklist

Table 1-2. Preventive Maintenance Checklist

Date																			Function
Hill-Rom Company Inc.	Manufacturer																		Chair functions
																			Brakes
																			Cushions
																		Overall appearance	
	Model Number																		Lubrication
	Serial Number																		
Total Cost for This Page																			Labor Time:
																			Repair Cost:
																		Inspected By:	
																		<b>Legend</b> L=Lube C=Clean A=Adjust R=Repair or Replace O=Okay N=Not Applicable Remarks:	

---

## **Lubrication Requirements**

Regularly lubricate the following moving parts with a silicone spray or silicone based grease:

- Removable armrest, receiving tubes, and sleeves
- Recliner adjustment tube on the PostureRest and PostureRest Plus specialty chairs
- Rear swivel casters
- Wheel bearings
- Legrest extension tubes
- Chain drive (Posture Perfect)
- Contour headrest adjustment vertical and horizontal tubes (accessory)
- Removable foot support telescoping tubes (accessory)
- Tray table release pin and hinge assembly (accessory)

## Adjustments

The adjustment procedures for the Senior Seating Collection are as follows:

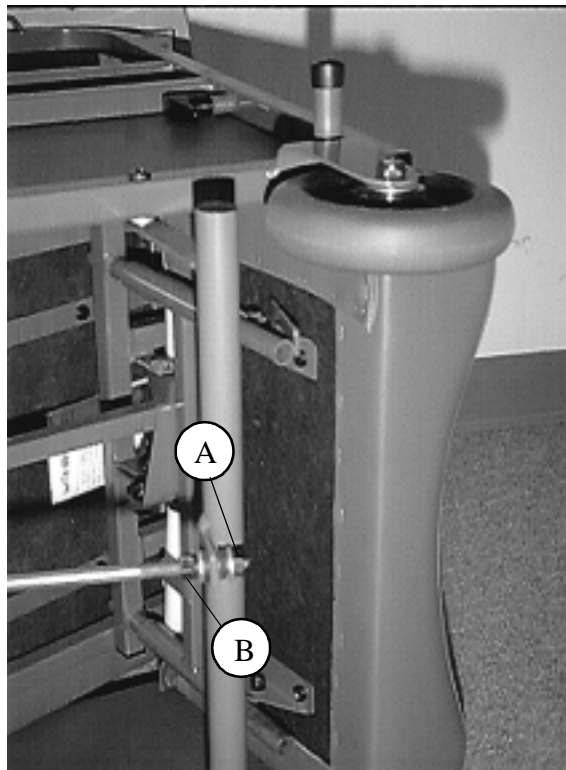
### PostureRest Specialty Chair

The PostureRest specialty chair has the provision for brake adjustment only.

#### Brake Adjustment

1. Adjust the jam nuts (A) and (B) to increase or decrease the brake tube pressure against the front casters (see figure 1-3 on page 1-9).
2. After the adjustment is complete, tighten the jam nuts (A) and (B).

**Figure 1-3. Brake Adjustment (PostureRest)**



m124\_040



## PostureRest Plus Specialty Chair

The PostureRest Plus specialty chair has the provisions for brake adjustment and brake cam adjustment only.

### Brake Adjustment

1. Adjust the jam nuts (A) and (B) to increase or decrease the brake tube pressure against the front casters (see figure 1-3 on page 1-9).
2. After the adjustment is complete, tighten the jam nuts (A) and (B).

#### NOTE:

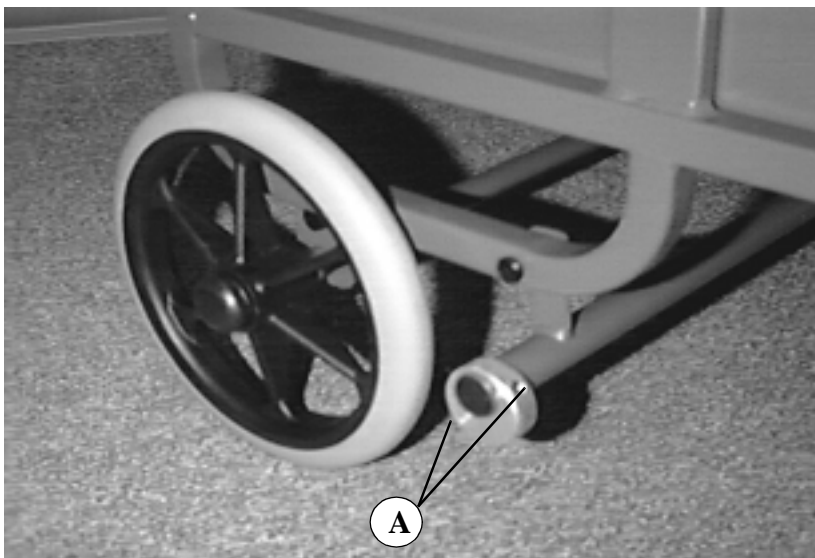
You may need to adjust the brake cam to ensure equal braking pressure is applied concurrently to both front casters.

### Brake Cam Adjustment

The brake cams are attached to either end of the brake tube located behind the front casters.

1. Activate the brake pedal until one of the brake cams make contact with a caster.
2. Loosen the setscrews (A) securing the brake cam that is not making contact with a caster (see figure 1-4 on page 1-10).
3. Rotate the cam until it makes contact with the caster, and tighten the setscrews.

**Figure 1-4. Brake Adjustment (PostureRest Plus)**



m124\_041

## Posture Perfect Specialty Chair

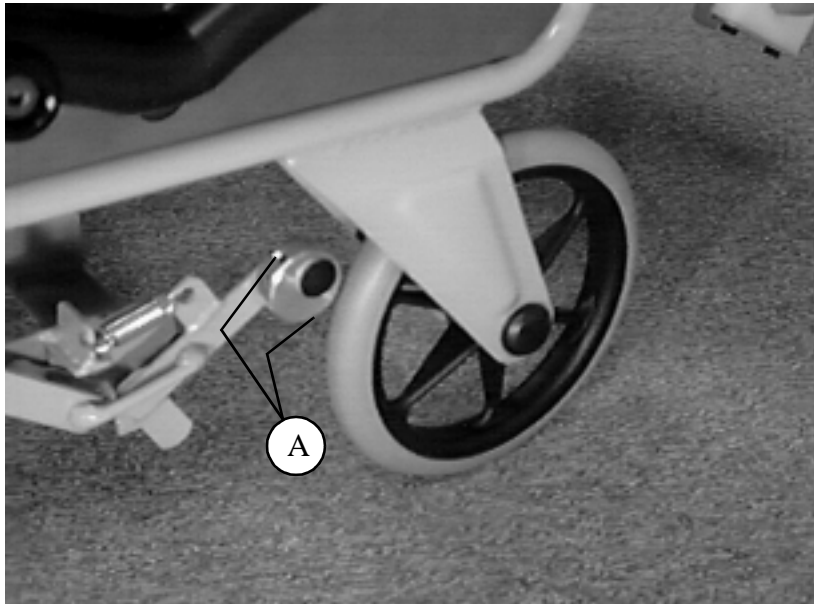
The Posture Perfect specialty chair has the provisions for brake, seat depth, and tilt-in-space adjustments only.

### Brake Adjustment

The brake cams are attached to the brake arms located on both sides of the chair.

1. Activate the brake pedal until one of the brake cams make contact with a caster.
2. Loosen the setscrews (A) securing the brake cam that is not making contact with a caster (see figure 1-5 on page 1-11).
3. Rotate the cam until it makes contact with the caster, and tighten the setscrews.

**Figure 1-5. Brake Adjustment (Posture Perfect)**

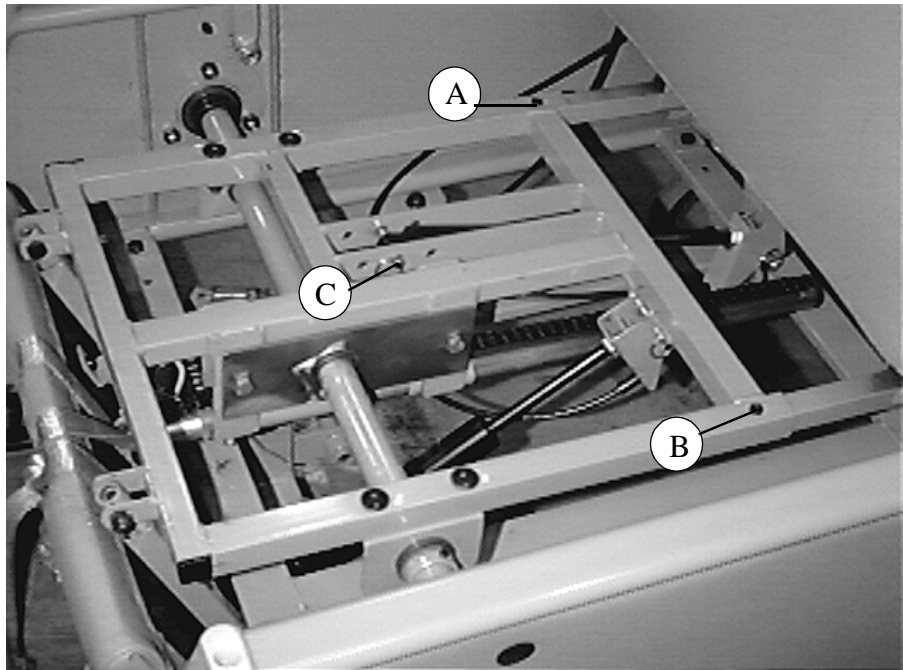


m124\_044

### Seat Depth Adjustment

1. Remove the seat cushion.
2. Remove the pins (A), (B), and (C) (see figure 1-6 on page 1-12).
3. Adjust the seat to the desired position.
4. Install the pins and the seat cushion.

**Figure 1-6. Seat Depth Adjustment**

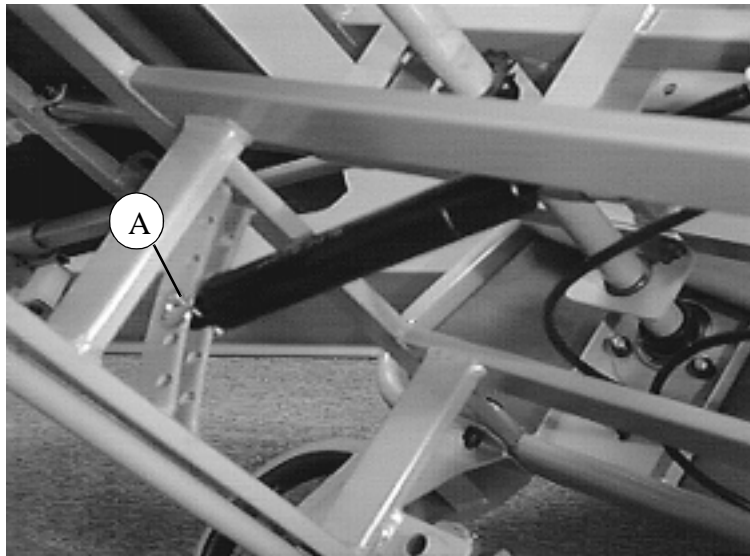


m124\_043

### Tilt-In-Space Adjustment

1. Turn the chair on its side.
2. Remove the pin (A) (see figure 1-7 on page 1-13).
3. Adjust the seat to the desired position.

**Figure 1-7. Tilt-In Space Adjustment**



m124\_045

## Specifications

### Physical Description

See the table below for Senior Seating Collection specifications (see table 1-3 on page 1-14).

**Table 1-3. Specifications**

Feature	Dimension
<b>PostureRest Specialty Chair</b>	
Overall height	47" (119 mm)
Overall width (to outside of arms)	21" (53 mm)
Overall depth	33" (83 mm)
Seat width	19" (48 mm)
Seat height (floor to top of seat)	18 1/2" (47 mm)
Armrest height to seat	9 1/2" (24 mm)
Seat back height	30" (76 mm)
Weight capacity	250 lbs (113 kgs)
<b>PostureRest Plus Specialty Chair</b>	
Overall height	47" (119 mm)
Overall width (to outside of arms)	24" (60 mm)
Overall depth	33" (83 mm)
Seat width	19" (48 mm)
Seat height (floor to top of seat)	20" (50 mm)
Armrest height to seat	9 1/2" (24 mm)
Seat back height	30" (76 mm)
Weight capacity	250 lbs (113 kgs)
<b>Posture Perfect Specialty Chair</b>	
Overall height	47" (119 mm)
Overall width (to outside of arms)	26 1/2" (67 mm)
Overall depth	36" (91 mm)
Seat width	19" (48 mm) (optional 22" available) (49 mm)
Seat height (floor to top of seat)	20" (50 mm)
Armrest height to seat	9" (22 mm)
Seat back height	32" (81 mm)
Weight capacity	300 lbs (136 kgs)

## UL Classification

There is no UL classification for the Senior Seating Collection.

---

## Model Identification

**Table 1-4. Model Identification**

Model Number	Description
P535	High back chair with winged headrest
P545	Low back chair with contoured headrest and tray
P546	Low back chair with contoured headrest
P555	Low back chair with contoured headrest
P556	High back chair with winged headrest
P557	Low back chair with contoured headrest
P558	High back chair with winged headrest

---

## Warning and Caution Labels

There are no warning and caution labels for the Senior Seating Collection.

---

## Accessory Assembly Instructions

The assembly instructions for each of the accessories are as follows:

### **Padded Positioning Panels (PostureRest)—P475A**

Padded positioning panels are made for a right and left armrest. The right has a large cutout to fit over the tray harness.

1. Remove the armrest cushions from the armrest by removing the two screws located under each armrest.
2. Unzip each padded positioning panel. Place the insert pin, located on the armrest, through the hole at the narrow end of the padded positioning panel.
3. Pull the panel over the top of each armrest, and install the armrest cushions.
4. Stuff the foam pad into the panel opening. Ensure that the inside edge of the frame is covered.
5. Pull the panel into place, and zip it closed.

### **IV Pole and Holder (PostureRest and PostureRest Plus)—P470A**

1. Determine on which side, right or left, to install the IV holder.
2. Remove the truss head cap screws located on the rear of the vertical frame, and replace with the longer bolts provided.
3. Place the IV holder over the bolts, and tighten the nuts.
4. Place the IV pole in the holder.



#### **CAUTION:**

Use caution when using an IV pole with shoulder or body bolsters. Reclining the chair could cause the bolster arm to hit the IV pole.

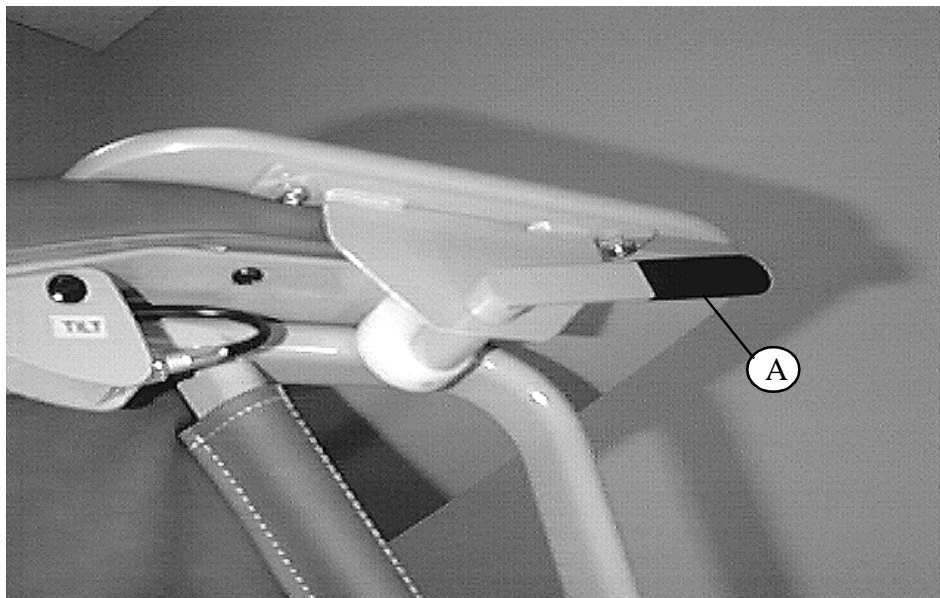
## Tray Table (Posture Perfect)—P471A

1. Position the tray table with the cutout edge toward the user and the lever handles positioned downward.
2. Slide the table over the armrest cushions to its desired position.
3. If desired, lock the tray table by rotating both levers (A) toward the front of the chair (see figure 1-8 on page 1-17).
4. To remove the tray table, release the levers, and slide the tray forward off of the armrest.
5. Store the table on the hooks provided on the left side of the chair.

**CAUTION:**

Never use the tray table as a restraint device.

**Figure 1-8. Tray Table**



m124\_051



## Handwheel Resident Lockout (Posture Perfect)—P472A

1. Secure one end of the lockout strap (A) to the armrest side frame (see figure 1-9 on page 1-18).
2. Loop the remaining end on to the handwheel knob.
3. Ensure the handwheel can not be operated.
4. To restore operation to the resident, remove the lockout strap completely.

**Figure 1-9. Handwheel Resident Lockout**



m124\_048

## **Pommel Seat (All Model Chairs)—P469A, P473A, and P474A**

1. To remove the existing seat deck, lift the front of the seat cushion, pull forward, and lift the seat away from the frame.
2. Install the pommel seat deck, ensuring the seat deck brackets slip under the cross bar at the rear of the frame.
3. Install the adjustable pommel into the seat deck.
4. To adjust the pommel, turn the T-knob counterclockwise until loosened. Slide the pommel to its desired position.
5. Turn the T-knob clockwise to tighten.

### **NOTE:**

Remove the pommel completely when not needed or when transferring the resident.

## Shoulder Bolsters (C) (All Model Chairs)—P467A and P476A Body Bolsters (B) (All Model Chairs)—P468A and P477A

1. Install the bolster mounting brackets (A) on each side of the chair back frame (see figure 1-10 on page 1-20).

**NOTE:**

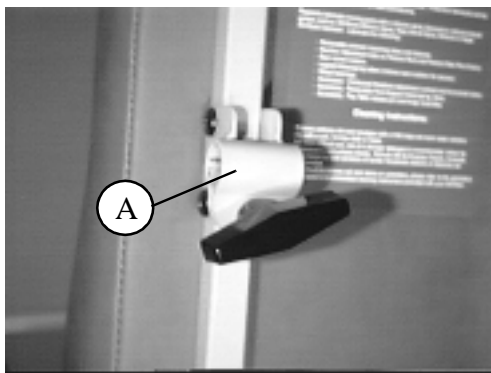
Mount the brackets with the black T-knob facing downward.

2. Locate the existing holes, and insert the truss head cap screws through the bracket and frame. Secure with the locknuts.
3. Slide the bolster arm into the mounting bracket.
4. Position the bolsters as desired, and tighten the T-knob.
5. Remove or reposition the bolsters by loosening the T-knob.

**NOTE:**

You can use only one set of bolsters at a time.

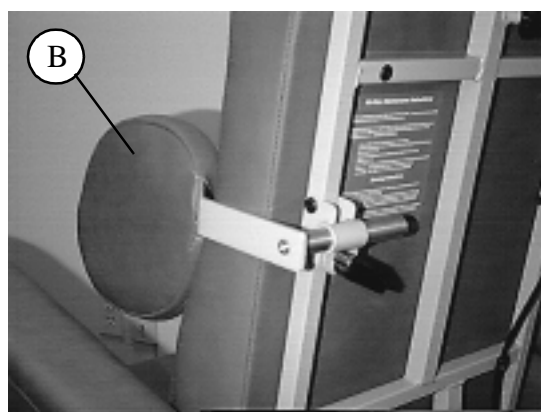
**Figure 1-10. Shoulder and Body Bolsters**



m124\_052



m124\_047



m124\_046

# Chapter 2

## Parts List

# 2

---

### Chapter Contents

Warranty .....	2 - 3
Ordering Service Parts .....	2 - 5
Exchange Policy .....	2 - 7
In-Warranty Exchanges .....	2 - 7
Out-of-Warranty Exchanges .....	2 - 7
Recommended Spare Parts .....	2 - 7
Brake and Wheel Assembly (PostureRest Plus) .....	2 - 8
Brake and Wheel Assembly (PostureRest) .....	2 - 10
Brake Assembly (PostureRest) .....	2 - 12
Side Assembly With Wheel (Posture Perfect) .....	2 - 14
Side and H-Frame Assemblies (Posture Perfect) .....	2 - 18
Seat Frame Assembly (PostureRest Plus and PostureRest) .....	2 - 22
Backrest Assembly (PostureRest Plus and PostureRest) .....	2 - 24
Backrest Assembly (Posture Perfect) .....	2 - 26
Armrest Assembly (PostureRest Plus and PostureRest) .....	2 - 28
Side Panel Assembly (PostureRest) .....	2 - 30
Side Panel (PostureRest Plus) .....	2 - 32
Legrest Assembly (PostureRest Plus and PostureRest) .....	2 - 34
Removable Foot Support Assembly (PostureRest Plus)— P/N 2500-109 .....	2 - 36
Foot Support Assembly (Posture Perfect)—P/N 2500-170 .....	2 - 38
Shoulder Bolster Set .....	2 - 40
Body Bolster Set .....	2 - 42

Privacy Panel Cushions (PostureRest and PostureRest Plus) . . . . .	2 - 44
Privacy Panel Assembly (Posture Prefect)—P/N 2500-168 . . . . .	2 - 46
Pommel Seat Cushion (PostureRest) . . . . .	2 - 48
Pommel Seat Cushion (Posture Perfect and PostureRest Plus) . . . . .	2 - 50
Cushion . . . . .	2 - 52
Tray Assembly (PostureRest Plus and PostureRest) . . . . .	2 - 54
Tray Assembly (Posture Perfect)—P/N 2500-167 . . . . .	2 - 56
Contoured Headrest Assembly . . . . .	2 - 58
IV Holder—P/N 2500-125 . . . . .	2 - 60
Rear Stabilizer . . . . .	2 - 62

## Warranty

# 2

# Hill-Rom® Company, Inc. SENIOR SEATING™ COLLECTION LIMITED WARRANTY

Hill-Rom® Company, Inc. has a long tradition of providing superior quality products and service to our customer. Our goal is "Total Customer Satisfaction." In that spirit, Hill-Rom is proud to offer the following warranty.

### LIMITED WARRANTY:

Hill-Rom warrants to the original purchaser that its products shall be free from defects in material and workmanship for a period of two (2) years from the date of delivery. Hill-Rom's obligation under this warranty is expressly limited to supplying replacement parts and/or service for, or replacing, at its option, any product which is, in the sole discretion of Hill-Rom, found to be defective. In addition to the foregoing two (2) year warranty, Hill-Rom warrants to the original purchaser that the frame and welds on its chairs will be free from structural defects for seven (7) years from the date of delivery. THE FOREGOING WARRANTIES ARE EXCLUSIVE AND IN LIEU OF ALL OTHER EXPRESS WARRANTIES AND IMPLIED WARRANTIES, INCLUDING BUT NOT LIMITED TO, THE IMPLIED WARRANTIES OF MERCHANTABILITY AND FITNESS OF PURPOSE. HILL-ROM'S OBLIGATION UNDER THESE WARRANTIES SHALL NOT INCLUDE ANY LIABILITY FOR LOSS OF PROFITS, DIRECT, INDIRECT OR CONSEQUENTIAL DAMAGES OR DELAYS. Some states do not allow the exclusion or limitation of incidental or consequential damages, so the above exclusion or limitation may not apply. If requested by Hill-Rom, products or parts for which a warranty claim is made shall be returned prepaid to Hill-Rom's factory. No employee or representative of Hill-Rom is authorized to change these warranties in any way or grant any other warranty. These warranties shall not apply outside the United States. These warranties provide specific legal rights; however, there may be other available rights, which vary from state to state.

**PART AVAILABILITY POLICY:** Hill-Rom will supply parts for new products for ten (10) years from date of last manufacture.

### CUSHION WARRANTY:

**Cushions:** Hill-Rom warrants to the original purchaser that its cushion shall be free from defects in material and workmanship for a period of one (1) year from the date of delivery.

**FOR PARTS AND SERVICE UNDER THESE WARRANTIES:** Call Hill-Rom Technical Support Department at (800) 445-3720, Monday through Friday. In order to expedite service, we request you furnish the following information: customer identification number, product model number, serial number, and description of problem. A qualified Specialist will provide, via telephone, troubleshooting assistance for hospital personnel and provide necessary parts to make repairs. If telephone troubleshooting determines the need for on-site technical service, a qualified Territory Service Representative will be dispatched. Replacement of non-technical items will be the responsibility of the customer.

**Disclaimer:** All warranties shall be void if the product is submerged in water, cleaned in a shower, or power washed. Any improper or negligent use, any alterations or repairs not in accordance with Hill-Rom's manuals or performed by others in such manner as in Hill-Rom's judgement affects the product materially and adversely, shall void these warranties.

Revised December 8, 1995

**NOTES:**

---

2

---

## Ordering Service Parts

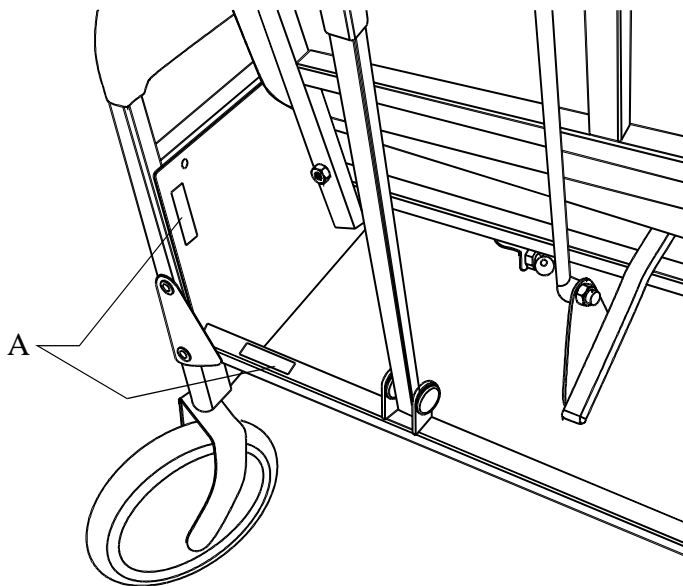
Use the parts lists in this service manual to identify the part numbers you require.

Call your Technical Customer Support Specialist at the Hill-Rom Technical Support Department—phone (800) 445-3720. To help expedite the processing of your parts order, please have your six-digit customer account number, purchase order number, product number, and serial number available for the Technical Customer Support Specialist when you call.

**NOTE:**

You will find the product number and serial number on the model and serial number label (A) (see figure 2-1 on page 2-5). (The label will be in one of the two locations shown, depending on which model chair you have.)

**Figure 2-1. Location of Identification Labels**



m124\_029



## 2

For your convenience, Hill-Rom provides a telefax number to promptly order parts, request part prices and availability, or to follow up on a service order. The telefax number is (812) 934-8472.

We suggest a minimum order of \$40.00 when placing orders for service parts. This will help prevent an increase in the cost of processing your service order.

Terms:

- Net 30 days.
- FOB Batesville, Indiana.
- Shipping charges are prepaid and added to the invoice.
- All service orders are shipped UPS ground, unless you specifically request an alternative method.

Address all inquiries to:

Hill-Rom Company  
1069 State Route 46 E  
Batesville, Indiana 47006-9167  
Attention: Technical Support—Parts

Address all return goods to:

Hill-Rom Company  
1069 State Route 46 E  
Batesville, Indiana 47006-9167  
Attention: H51 Service Stores

**NOTE:**

To eliminate any possible delays or incorrect billings, **do not** return any items without a Return Material Authorization (RMA) number. A Return Material Authorization packet is included with each order when a return is requested. This packet includes an RMA number, instructions, and a shipping label. If misplaced, obtain an RMA number by phoning the Hill-Rom Technical Support Department at (800) 445-3720.

---

## Exchange Policy

The following are Hill-Rom's policies for in-warranty and out-of-warranty exchanges.

### In-Warranty Exchanges

Hill-Rom will request that parts/products be returned for inspection in some cases. When this occurs, you are expected to return parts/products within 30 days. If you fail to return the inoperative parts/products within the 30 day period, Hill-Rom will invoice your facility for the full selling price of the parts/products.

**NOTE:**

The preceding billing procedure **only** pertains to parts/products that Hill-Rom requests to be returned.

In some cases, the invoice sent with the parts will show the full selling price of the parts. This is for Hill-Rom's internal use only and should not be confused with the price you will actually pay.

Please do not return any items without an RMA number. Hill-Rom will include a Return Material Authorization packet with the parts/products shipment when parts/products have been requested to be returned. If misplaced, obtain an RMA number by phoning the Hill-Rom Technical Support Department at (800) 445-3720.

### Out-of-Warranty Exchanges

You are expected to return the inoperative parts/products to Hill-Rom within 30 days. Hill-Rom will include a Return Material Authorization packet with the parts/products shipment. If misplaced, obtain an RMA number by phoning the Hill-Rom Technical Support Department at (800) 445-3720. If you fail to return the equipment within 30 days, Hill-Rom will invoice your facility for **the difference between the exchange price and the new price of the part.**

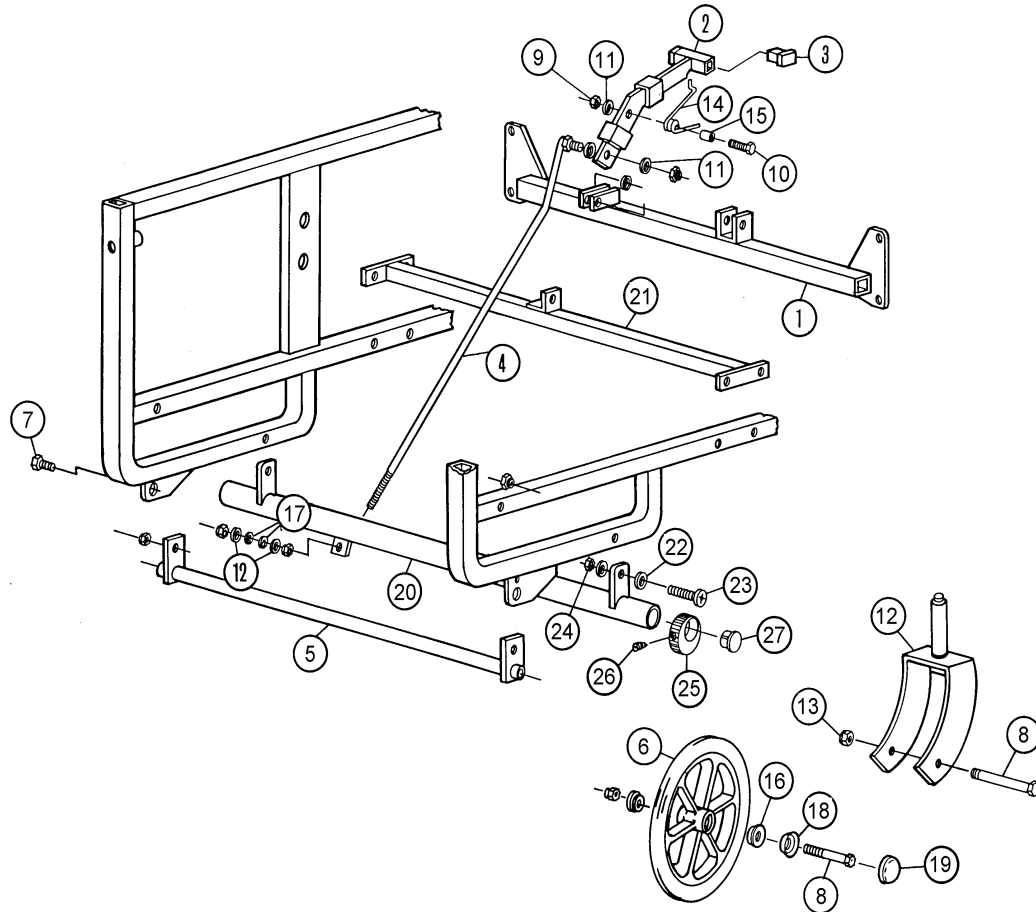
---

## Recommended Spare Parts

There are no recommended spare parts for the Senior Seating Collection.

## Brake and Wheel Assembly (PostureRest Plus)

Figure 2-2. Brake and Wheel Assembly (PostureRest Plus)



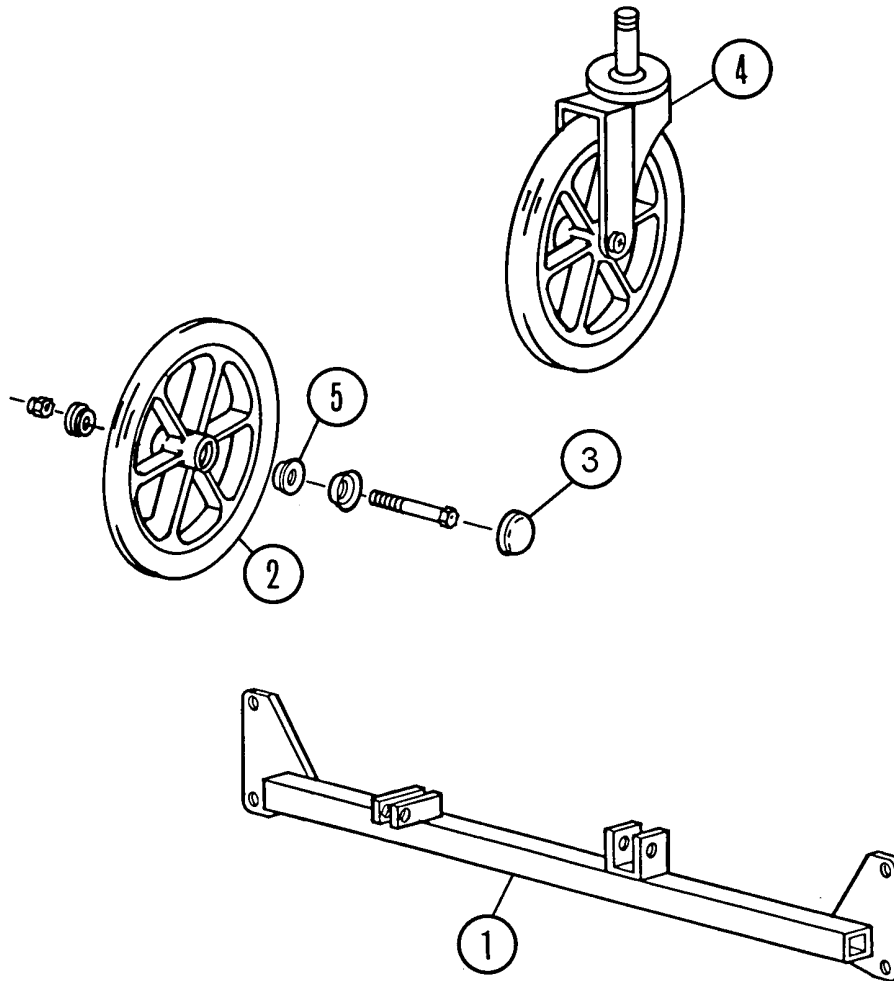
m124\_001

**Table 2-1. Brake and Wheel Assembly (PostureRest Plus)**

Item Number	Part Number	Quantity	Description
1	2000-289 (500)	1	Axle, back 19"
2	2000-141 (500)	1	Brake control assembly
3	8000-118 (500)	2	Plastic plug
4	2000-160 (500)	1	Brake linkage
5	2000-313 (500)	1	Axle, front 19"
6	8000-113 (500)	4	Wheel 8"
7	8000-262 (500)	2	Bolt
8	8000-144 (500)	2	Bolt
9	8000-135 (500)	1	Nut, nyloc half
10	8000-182 (500)	1	Bolt, hex head
11	8000-132 (500)	4	Washer
12	8000-285 (500)	2	Nut
13	3000-168 (500)	1	Brake, spring
14	5000-151 (500)	1	Spacer
15	2500-158 (500)	8	Housing and bearing
16	8000-293 (500)	3	Rubber spacer
17	3000-191 (500)	8	Washer
18	3000-192 (500)	8	Cap
19	2000-315 (500)	1	Brake tube, 19"
20	2000-396 (500)	1	Shock mount tube, 19"
21	8000-269 (500)	4	Lockwasher
22	8000-156 (500)	2	Screw
23	8000-128 (500)	2	Nut, nyloc
24	3000-195 (500)	2	Cam, brake
25	8000-282 (500)	2	Setscrew
26	8000-131 (500)	2	Plug
27	2000-147 (500)	2	Caster assembly without wheel 8"

## Brake and Wheel Assembly (PostureRest)

Figure 2-3. Brake and Wheel Assembly (PostureRest)



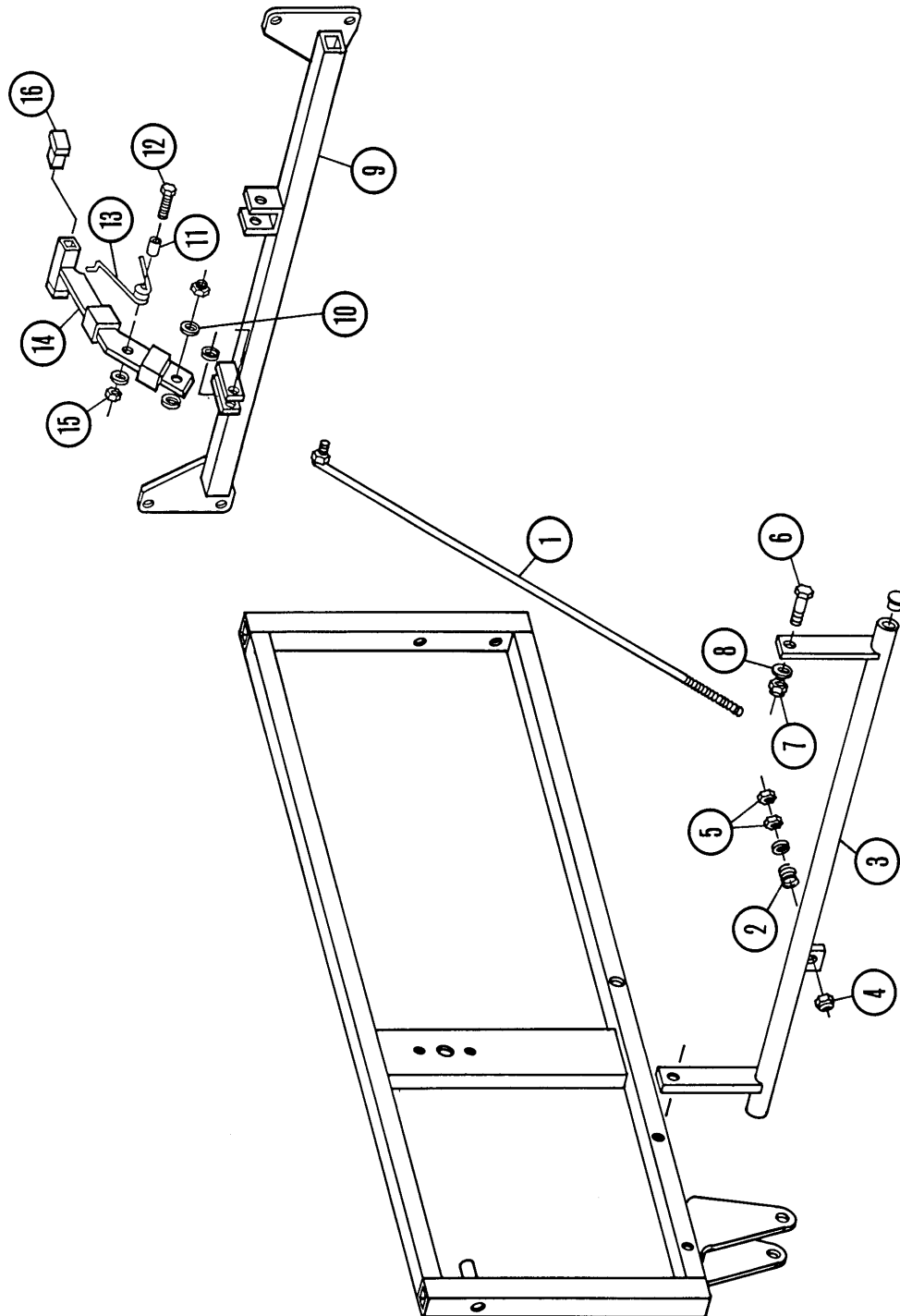
m124\_002

**Table 2-2. Brake and Wheel Assembly (PostureRest)**

<b>Item Number</b>	<b>Part Number</b>	<b>Quantity</b>	<b>Description</b>
1	2000-184 (500)	1	Axle, back
2	8000-259 (500)	4	Wheel, 5", front
3	3000-189 (500)	2	Yolk with axle bolt and nut
4	3000-225 (500)	8	Bearing

## Brake Assembly (PostureRest)

Figure 2-4. Brake Assembly (PostureRest)



m124\_014

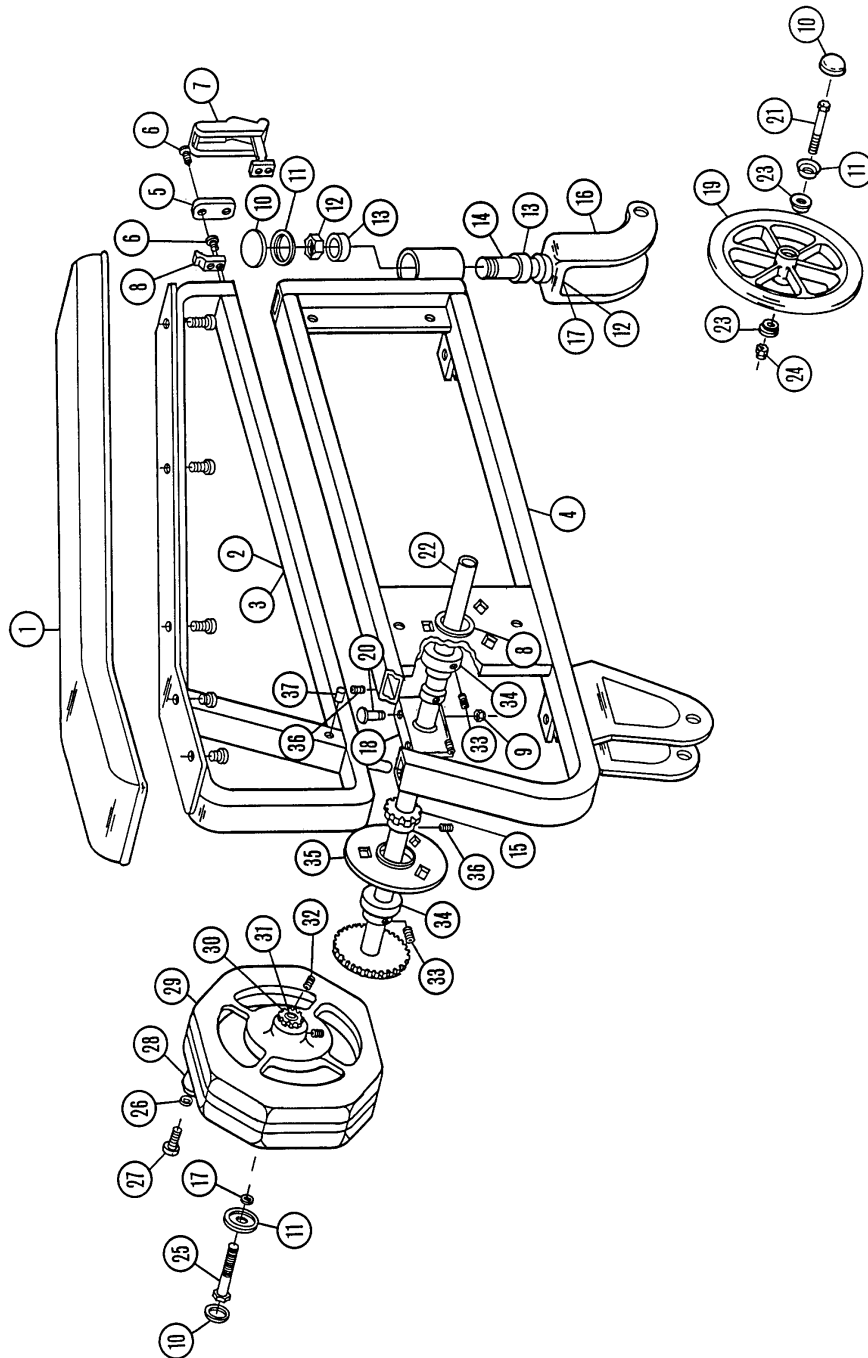
**Table 2-3. Brake Assembly (PostureRest)**

Item Number	Part Number	Quantity	Description
1	5000-123 (500)	1	Rod, brake
2	8000-278 (500)	1	Spring, brake
3	2000-239 (500)	1	Tube, brake
4	8000-135 (500)	1	Nut, nyloc half
5	8000-155 (500)	2	Hex nut
6	8000-127 (500)	2	Bolt
7	8000-128 (500)	2	Nut, nyloc
8	8000-133 (500)	4	Washer
9	2000-159 (500)	1	Axle, back 18"
10	8000-132 (500)	1	Washer
11	5000-151 (500)	8	Spacer
12	8000-182 (500)	1	Bolt, hex head
13	3000-168 (500)	1	Brake, spring
14	2000-141 (500)	1	Brake control assembly
15	8000-135 (500)	1	Nut, nyloc half
16	8000-118 (500)	2	Plastic plug



## Side Assembly With Wheel (Posture Perfect)

Figure 2-5. Side Assembly With Wheel (Posture Perfect)



m124\_031

**Table 2-4. Side Assembly With Wheel (Posture Perfect)**

Item Number	Part Number	Quantity	Description
1	2000-309 (500)†††	1	Cushion, armrest—lh
	2000-334 (500)†††	1	Cushion, armrest—rh
2	2000-295 (500)	1	Side, upper—rh
3	2000-296 (500)	1	Side, upper—lh
4	2000-293 (500)	1	Side, lower assembly
5	5100-284 (500)	2	Tab, upper side
6	8000-279 (500)	2	Screw
7	3000-276 (500)	1	Latch, soft
8	5000-215 (500)	2	Collar, lock
9	8000-142 (500)	4	Nut
10	3000-192 (500)	11	Cap
11	3000-191 (500)	11	Washer
12	8000-184 (500)	2	Nut
13	3000-109 (500)	4	Bearing, thrust
14	3000-234 (500)	2	Shank, caster
15	3000-238 (500)	1	Sprocket
16	3000-229 (500)	2	Caster, rear fork
17	5000-223 (500)	2	Washer
18	5100-231 (500)	2	Bracket
19	8000-318 (500)	4	Wheel, 8"
20	8000-185 (500)	4	Bolt
21	8000-147 (500)	4	Bolt
22	5000-216 (500)	1	Tube, cross
23	3000-225 (500)	8	Bearing
24	8000-306 (500)	4	Nut
25	8000-189 (500)	1	Bolt
26	8000-314 (500)	1	Washer
27	8000-265 (500)	1	Bolt, shoulder
28	8000-267 (500)	1	Knob, oval
29	3000-232 (500)	1	Wheel
30	5000-206 (500)	1	Gear

††† Specify upholstery color.

# 2

Item Number	Part Number	Quantity	Description
31	3000-282 (500)	2	Bearing
32	8000-317 (500)	2	Screw
33	8000-282 (500)	7	Setscrew
34	3000-278 (500)	2	Bearing
35	3000-273 (500)	2	Flangette
36	8000-323 (500)	2	Setscrew
37	8000-140 (500)	2	Pin, roll

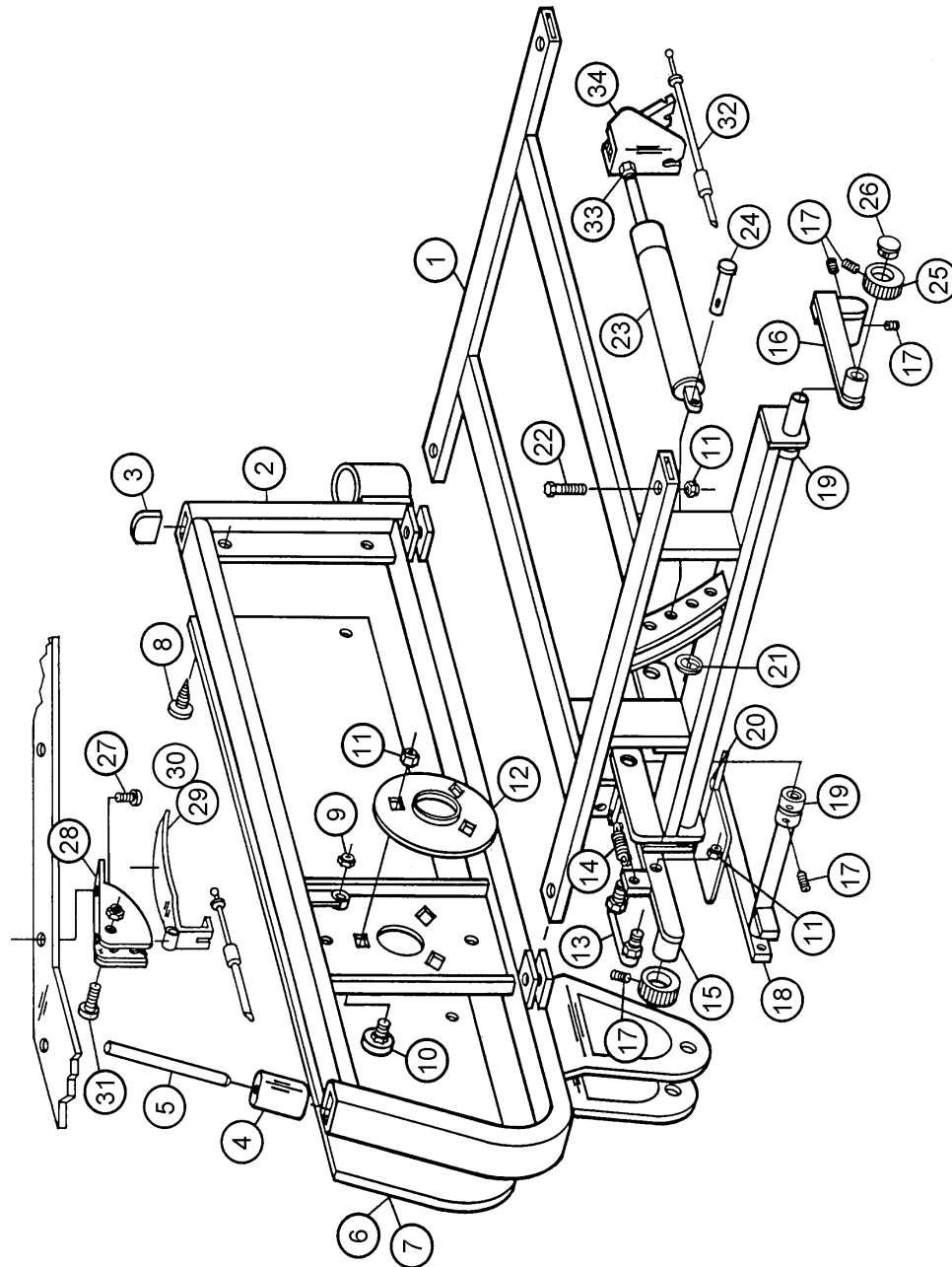
**NOTES:**

---

**2**

## Side and H-Frame Assemblies (Posture Perfect)

Figure 2-6. Side and H-Frame Assemblies (Posture Perfect)



m124\_030

**Table 2-5. Side and H-Frame Assemblies (Posture Perfect)**

Item Number	Part Number	Quantity	Description
1	2000-304 (500)	1	Frame, H, assembly
2	2000-294 (500)	1	Lower side, assembly—rh
3	5100-297 (500)	2	Insert, arm, back
4	5100-298 (500)	2	Insert, arm, front
5	5000-219 (500)	2	Insert, tube
6	2000-337 (500)†††	1	Side panel, lower—rh
7	2000-338 (500)†††	1	Side panel, lower—lh
8	3000-285 (500)	8	Pin, panel
9	8000-306 (500)	1	Nut
10	8000-315 (500)	6	Bolt
11	8000-137 (500)	15	Nut, nyloc
12	3000-273 (500)	2	Flangette
13	2000-303 (500)	1	Linkage, brake
14	3000-275 (500)	1	Brake, spring
15	2000-301 (500)	1	Brake, arm—rh
16	2000-300 (500)	1	Brake, arm—lh
17	8000-321 (500)	5	Screw
18	2000-302 (500)	1	Brake, pedal
19	5000-204 (500)	3	Collar, brake tube
20	3000-289 (500)	1	Bumper
21	8000-277 (500)	1	Ring, split
22	8000-182 (500)	4	Bolt, hex head
23	3000-281 (500)	1	Shock, adjustable
24	8000-123 (500)	1	Pin, clevis
25	3000-195 (500)	2	Cam, brake
26	8000-324 (500)	2	Plug
27	8000-116 (500)	8	Screw
28	2000-395 (500)	1	Actuator, housing
29	2000-322 (500)	1	Shock, handle
30	2000-399 (500)	1	Shock, handle
31	8000-156 (500)	1	Screw

††† Specify upholstery color.

# 2

Item Number	Part Number	Quantity	Description
32	3000-242 (500)	1	Cable, 52"
33	8000-316 (500)	1	Nut
34	4000-140 (500)	1	Operator

**NOTES:**

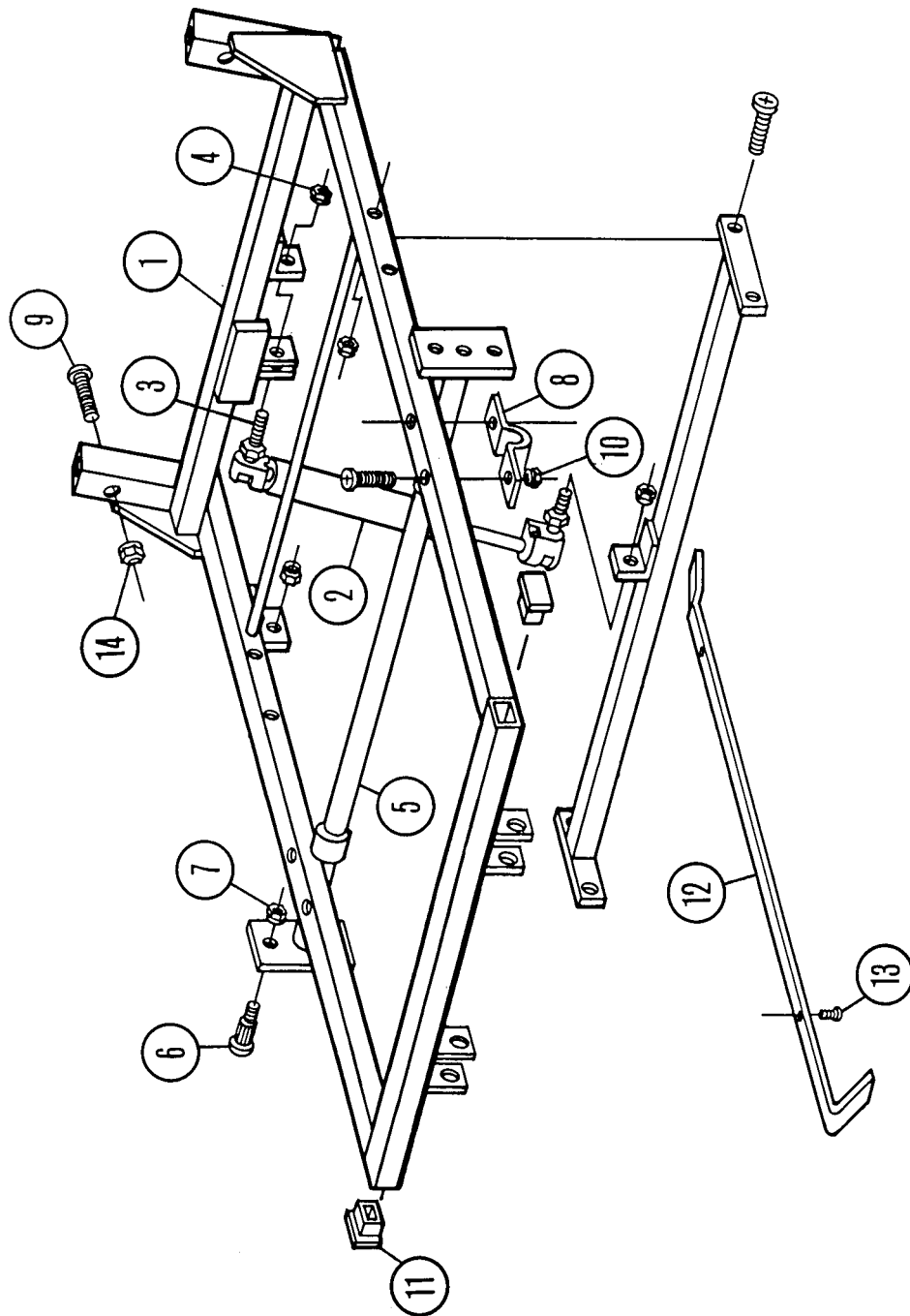
---

**2**



## Seat Frame Assembly (PostureRest Plus and PostureRest)

Figure 2-7. Seat Frame Assembly (PostureRest Plus and PostureRest)



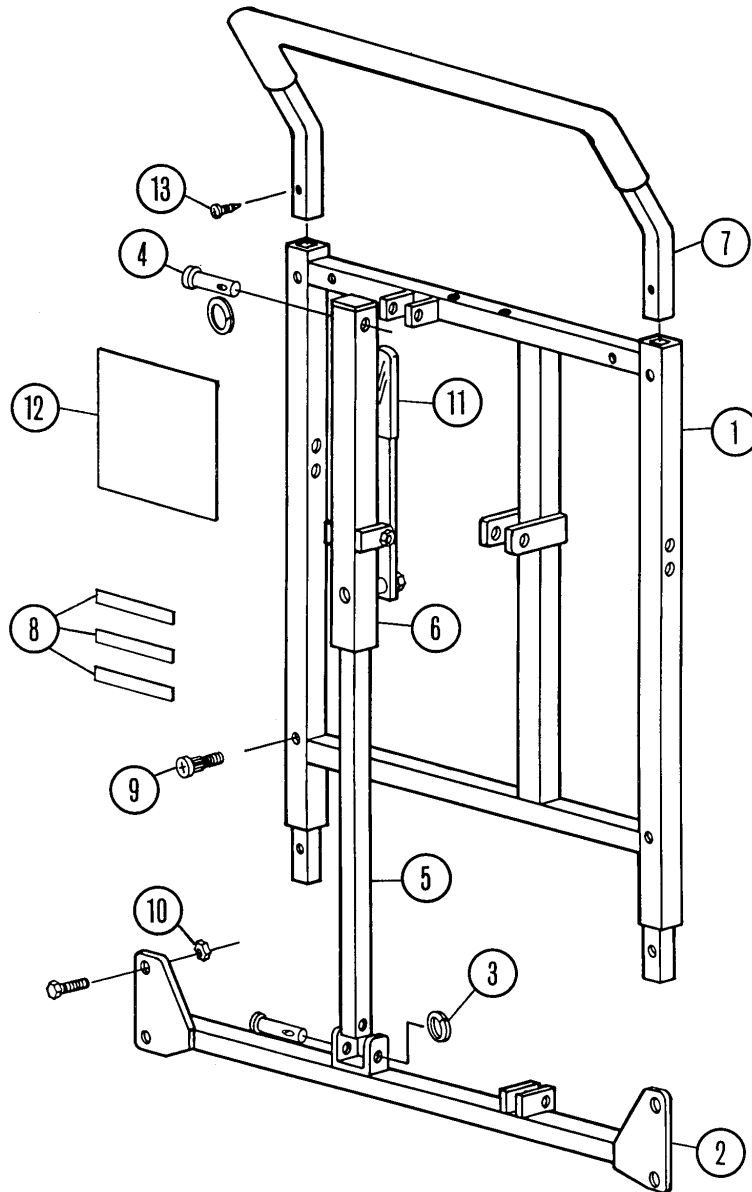
m124\_004

**Table 2-6. Seat Frame Assembly (PostureRest Plus and PostureRest)**

Item Number	Part Number	Quantity	Description
1	2000-126 (500)	1	Seat frame
2	3000-144 (500)	1	Gas spring
3	8000-232 (500)	2	Ball stud
4	8000-137 (500)	2	Nut, nyloc
5	2000-290 (500)	1	Seat cross tube—19"
6	8000-237 (500)	4	Bolt
7	8000-142 (500)	4	Nut
8	3000-114 (500)	2	Tube clamp
9	8000-156 (500)	6	Screw
10	8000-268 (500)	4	Nut, serrated flange
11	8000-105 (500)	2	Plastic plug
12	3000-147 (500)	2	Seat bracket
13	8000-116 (500)	4	Screw
14	8000-128 (500)	6	Nut, nyloc

## Backrest Assembly (PostureRest Plus and PostureRest)

Figure 2-8. Backrest Assembly (PostureRest Plus and PostureRest)



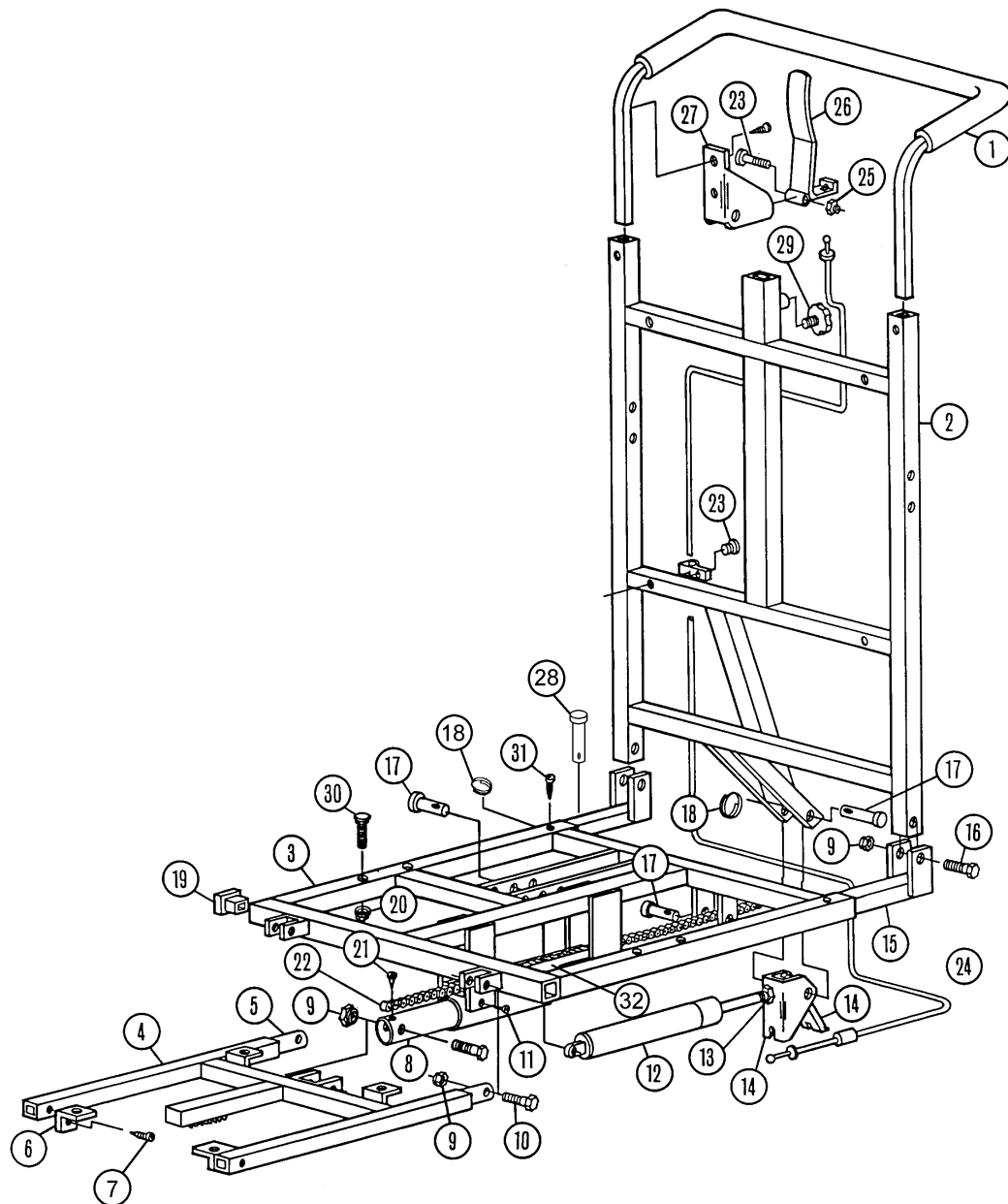
m124\_005

**Table 2-7. Backrest Assembly (PostureRest Plus and PostureRest)**

Item Number	Part Number	Quantity	Description
1	2000-163 (500)	1	Backrest frame
2	2000-289 (500)	1	Axle, back 19"
3	8000-175 (500)	2	Split ring
4	8000-123 (500)	2	Pin, clevis
5	2000-198 (500)	1	Recliner tube, lower (PostureRest)
	2000-143 (500)	1	Recliner tube, lower (PostureRest Plus)
6	2000-187 (500)	1	Recliner tube, upper (PostureRest)
	2000-144 (500)	1	Recliner tube, upper (PostureRest Plus)
7	2000-241 (500)	1	Push handle
8	8000-242 (500)	1	Decal, set
9	8000-156 (500)	10	Screw
10	8000-128 (500)	10	Nut, nyloc
11	3000-190 (500)	1	Grip, black vinyl
12	8000-272 (500)	1	Decal, maintenance instructions
13	8000-279 (500)	2	Screw

## Backrest Assembly (Posture Perfect)

Figure 2-9. Backrest Assembly (Posture Perfect)



m124\_032

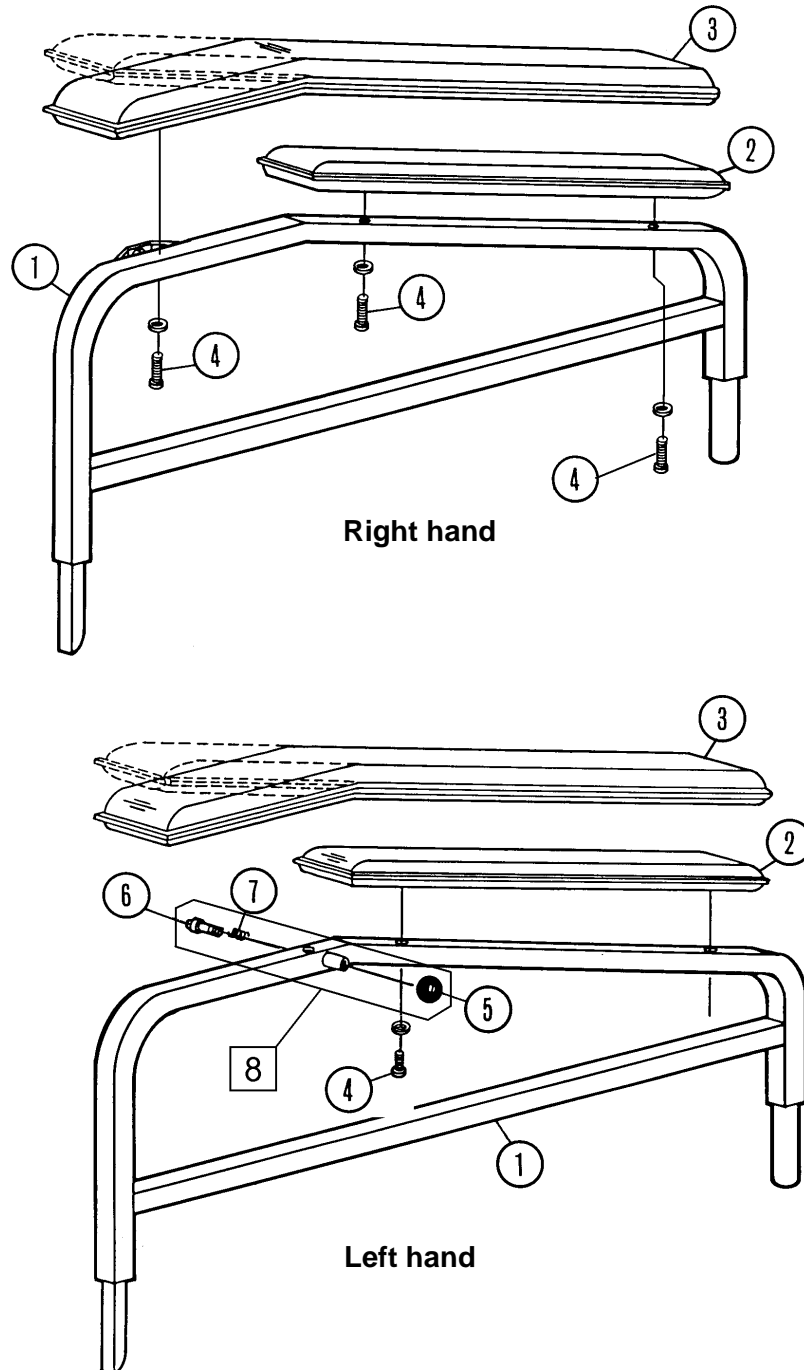
**Table 2-8. Backrest Assembly (Posture Perfect)**

Item Number	Part Number	Quantity	Description
1	2000-241 (500)	1	Push handle
2	2000-317 (500)	1	Seat, back (model 557-558)
	2000-292 (500)	1	Seat, back (model 555-556)
3	2000-316 (500)	1	Seat, frame (model 557-558)
	2000-291 (500)	1	Seat, frame (model 555-556)
4	2000-394 (500)	1	Footrest support
5	5100-253 (500)	1	Slide tube, footrest
6	5200-104 (500)	2	Bracket
7	8000-279 (500)	8	Screw
8	5100-252 (500)	1	Slide tube center, footrest
9	8000-137 (500)	2	Nut, nyloc
10	8000-136 (500)	3	Bolt
11	8000-307 (500)	2	Screw
12	3000-281 (500)	1	Shock, adjustable
13	8000-316 (500)	1	Nut
14	4000-140 (500)	1	Operator
15	2000-321 (500)	1	Seat, pivot recline (model 557-558)
16	8000-182 (500)	4	Bolt, hex head
17	8000-319 (500)	1	Pin, clevis
18	8000-277 (500)	4	Ring, split
19	8000-105 (500)	4	Plastic plug
20	8000-142 (500)	4	Nut
21	8000-270 (500)	1	Screw
22	5200-105 (500)	1	Chain, slide
23	8000-156 (500)	1	Screw
24	3000-242 (500)	1	Cable, 52"
25	8000-238 (500)	1	Nut
26	2000-322 (500)	1	Shock, handle
27	2000-395 (500)	1	Actuator, housing
28	3000-327 (500)	2	Clevis pin
29	3000-125 (500)	1	Knob
30	4000-140 (500)	1	Operator
31	8000-185 (500)	1	Bolt
32	3000-236 (500)	1	Chain slide

## Armrest Assembly (PostureRest Plus and PostureRest)

Figure 2-10. Armrest Assembly (PostureRest Plus and PostureRest)

2



m124\_006

**Table 2-9. Armrest Assembly (PostureRest Plus and PostureRest) RH—P/N 1000-100**

Item Number	Part Number	Quantity	Description
1	4000-112 (500)	1	Armrest frame—rh
2	2000-104 (500)†††	1	Cushion, armrest for table
3	2000-190 (500)†††	2	Cushion, armrest, full length
4	8000-156 (500)	3	Screw

**Table 2-10. Armrest Assembly (PostureRest Plus and PostureRest) LH—P/N 1000-101**

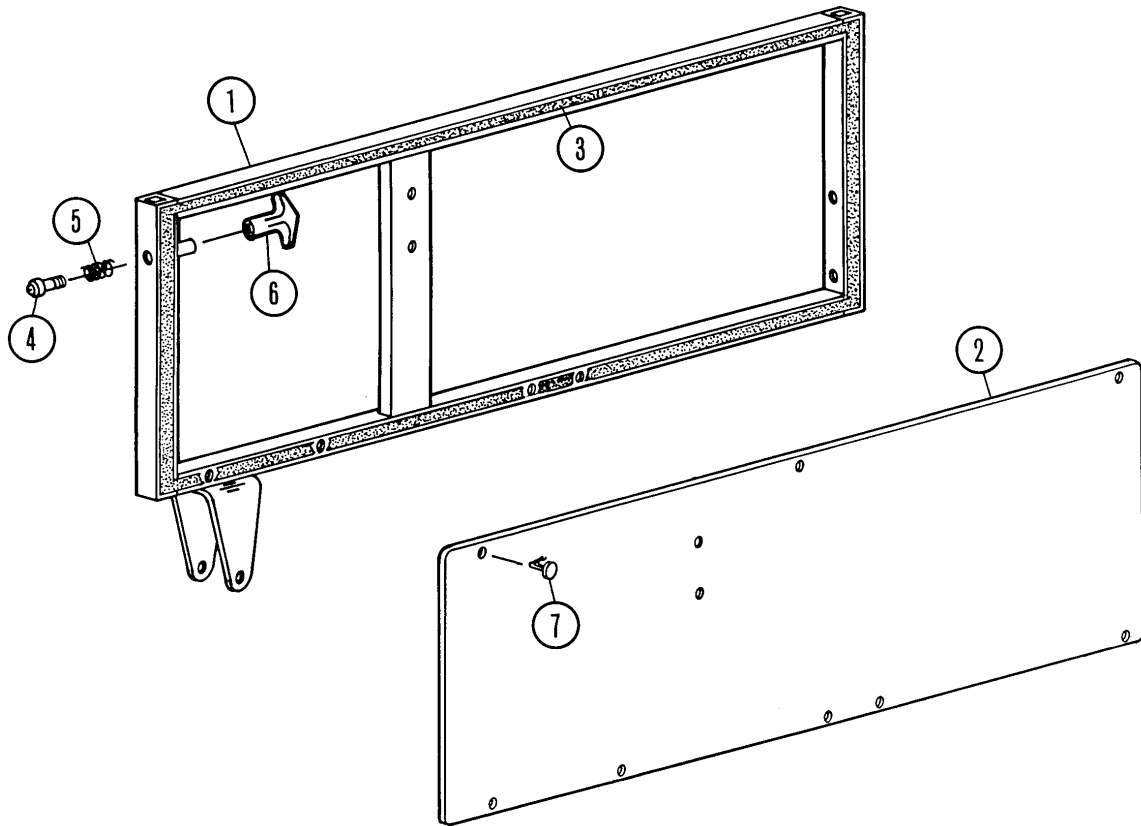
Item Number	Part Number	Quantity	Description
1	4000-111 (500)	1	Armrest frame—lh
2	2000-104 (500)†††	1	Cushion, armrest for table
3	2000-191 (500)†††	1	Cushion, armrest, full length
4	8000-156 (500)	2	Screw
5	8000-111 (500)	1	Knob
6	3000-120 (500)	1	Plunger
7	8000-107 (500)	1	Spring
8	2500-160 (500)	1	Tray lock assembly

††† Specify upholstery color.



## Side Panel Assembly (PostureRest)

Figure 2-11. Side Panel Assembly (PostureRest)



m124\_008

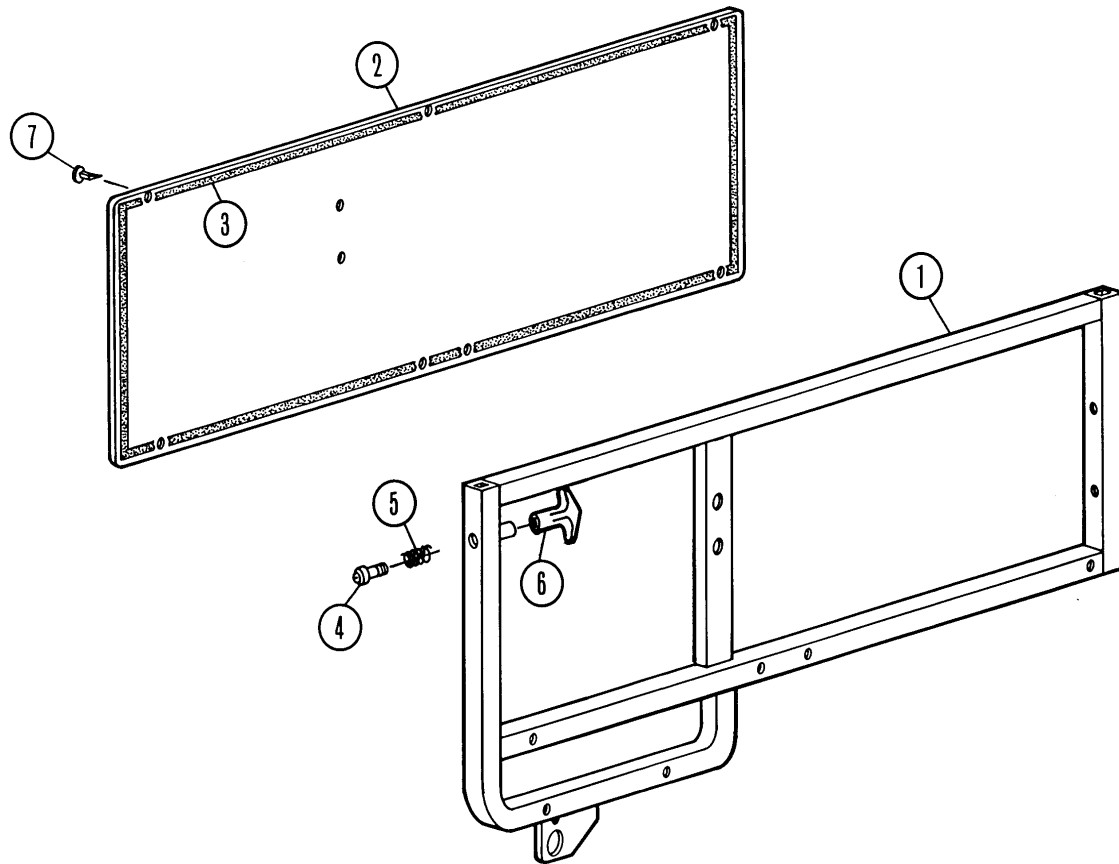
**Table 2-11. Side Panel Assembly (PostureRest)**

<b>Item Number</b>	<b>Part Number</b>	<b>Quantity</b>	<b>Description</b>
1	2000-182 (500)	1	Side frame—rh
	2000-183 (500)	1	Side frame—lh
2	3000-252 (500)	1	Side panel
3	6000-126 (500)	As required	Tape, mounting
4	3000-120 (500)	1	Plunger
5	8000-107 (500)	1	Spring
6	8000-112 (500)	1	T-handle knob
7	8000-264 (500)	6	Nylon push pin

**2**

## Side Panel (PostureRest Plus)

Figure 2-12. Side Panel (PostureRest Plus)



m124\_011

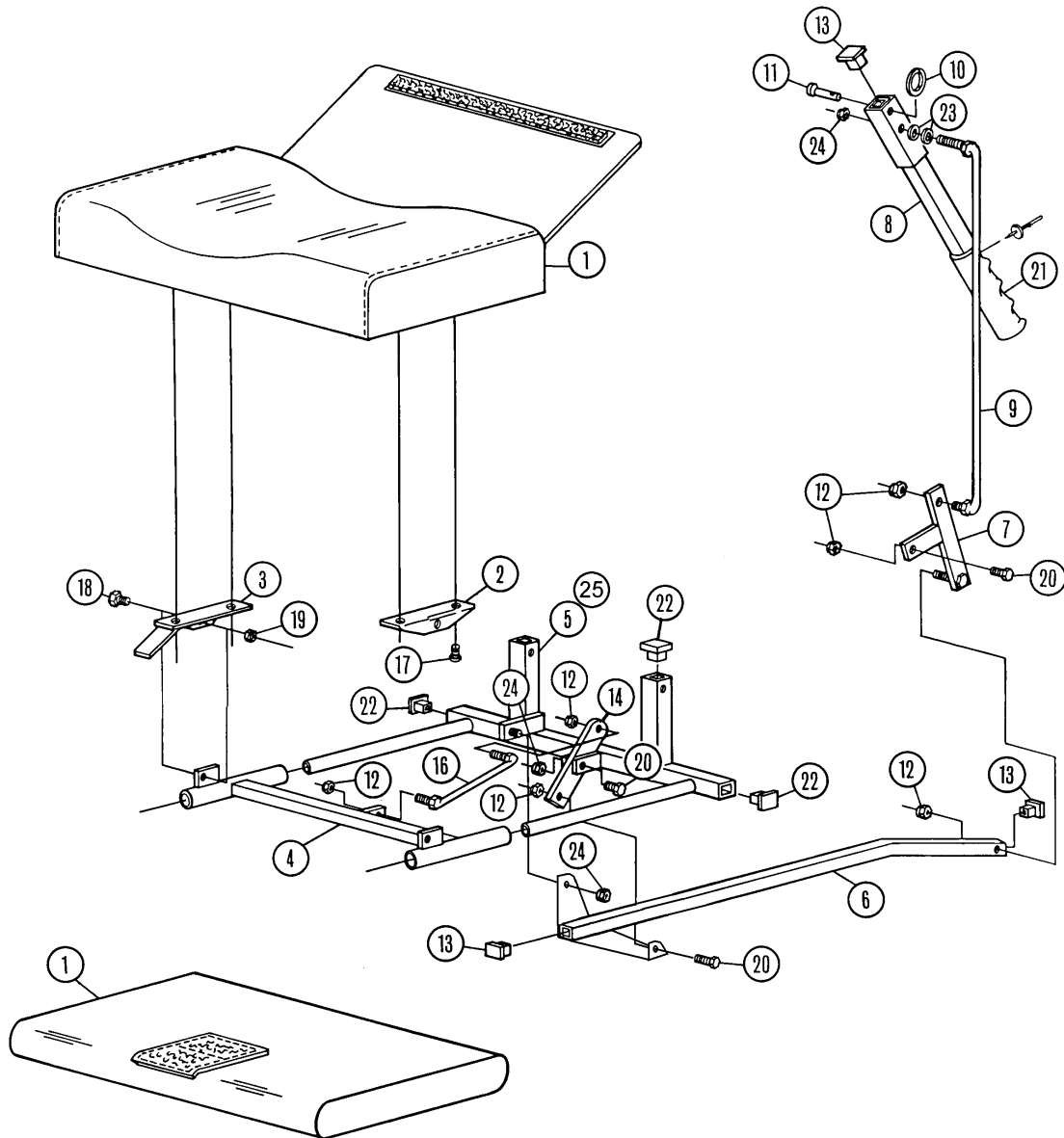
**Table 2-12. Side Panel (PostureRest Plus)**

Item Number	Part Number	Quantity	Description
1	2000-119 (500)	1	Side frame
2	3000-252 (500)	1	Side panel
3	6000-126 (500)	As required	Tape, mounting
4	3000-120 (500)	1	Plunger
5	8000-107 (500)	1	Spring
6	8000-112 (500)	1	T-handle knob
7	8000-264 (500)	6	Nylon push pin

## Legrest Assembly (PostureRest Plus and PostureRest)

Figure 2-13. Legrest Assembly (PostureRest Plus and PostureRest)

2



m124\_023

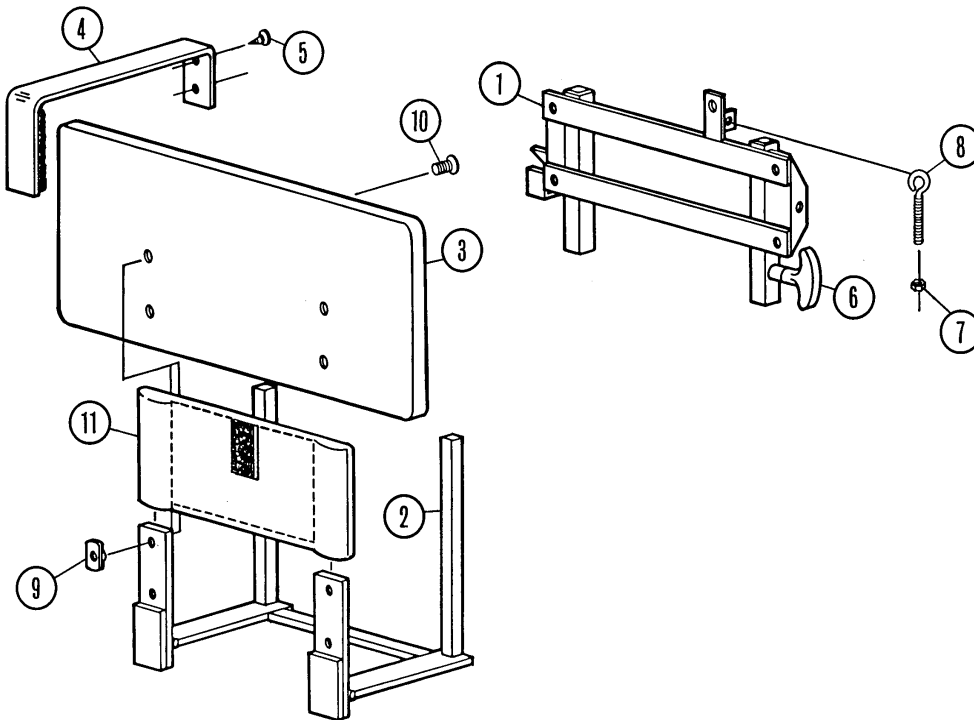
**Table 2-13. Legrest Assembly (PostureRest Plus and PostureRest)**

Item Number	Part Number	Quantity	Description
1	2000-103 (500)†††	1	Cushion, legrest (PostureRest)
	2000-348 (500)†††	1	Cushion, sub (PostureRest Plus)
2	3000-123 (500)	1	Legrest bracket
3	4000-113 (500)	1	Bracket weldment
4	4000-114 (500)	1	Slide
5	4000-115 (500)	1	Hanger, legrest (PostureRest)
6	2000-150 (500)	1	Push pull tube, legrest
7	4000-116 (500)	1	T-weldment
8	2000-148 (500)	1	Legrest lever
9	2000-149 (500)	1	Rod, legrest
10	8000-175 (500)	1	Split ring
11	8000-123 (500)	1	Pin, clevis
12	8000-137 (500)	6	Nut, nyloc
13	8000-118 (500)	3	Plastic plug
14	5000-154 (500)	1	Linkage, 3 hole
15	5000-155 (500)	1	Linkage, 2 hole
16	4000-118 (500)	1	Linkage
17	8000-116 (500)	4	Screw
18	8000-143 (500)	2	Bolt
19	8000-128 (500)	2	Nut, nyloc
20	8000-134 (500)	4	Bolt
21	8000-117 (500)	1	Hand grip, vinyl
22	8000-231 (500)	4	Plastic plug
23	8000-132 (500)	2	Washer
24	8000-135 (500)	3	Nut, nyloc half
25	4000-134 (500)	1	Hanger, legrest (PostureRest Plus)

††† Specify upholstery color.

## Removable Foot Support Assembly (PostureRest Plus)— P/N 2500-109

Figure 2-14. Removable Foot Support Assembly (PostureRest Plus)—P/N 2500-109



m124\_027

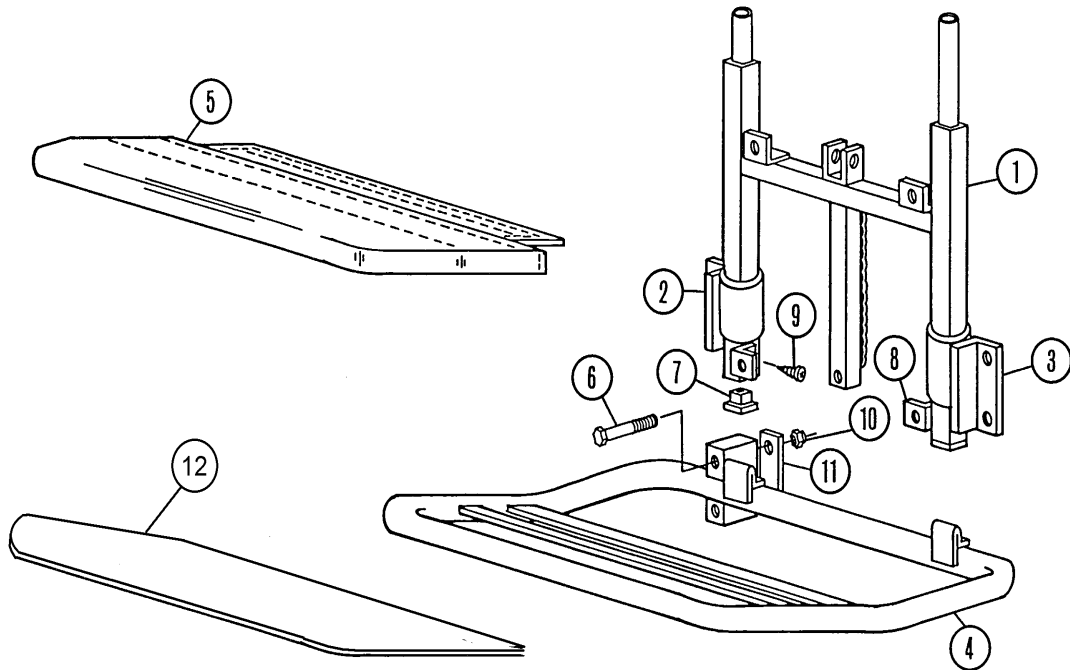
**Table 2-14. Removable Foot Support Assembly—P/N 2500-109**

Item Number	Part Number	Quantity	Description
1	2000-162 (500)	1	Foot support bracket
2	2000-170 (500)	1	Foot support hinge assembly
3	3000-175 (500)	1	Foot support board, plastic
4	7000-159 (500)	1	Nylon strap with velcro hook
5	8000-254 (500)	2	Screw
6	8000-112 (500)	1	T-handle knob
7	8000-128 (500)	1	Nut, nyloc
8	8000-243 (500)	1	Eye bolt 3"
9	8000-271 (500)	4	T-nut
10	8000-270 (500)	4	Screw
11	7000-238 (500)	1	Foot support hinge cover



## Foot Support Assembly (Posture Perfect)—P/N 2500-170

Figure 2-15. Foot Support Assembly (Posture Perfect)—P/N 2500-170



m124\_035

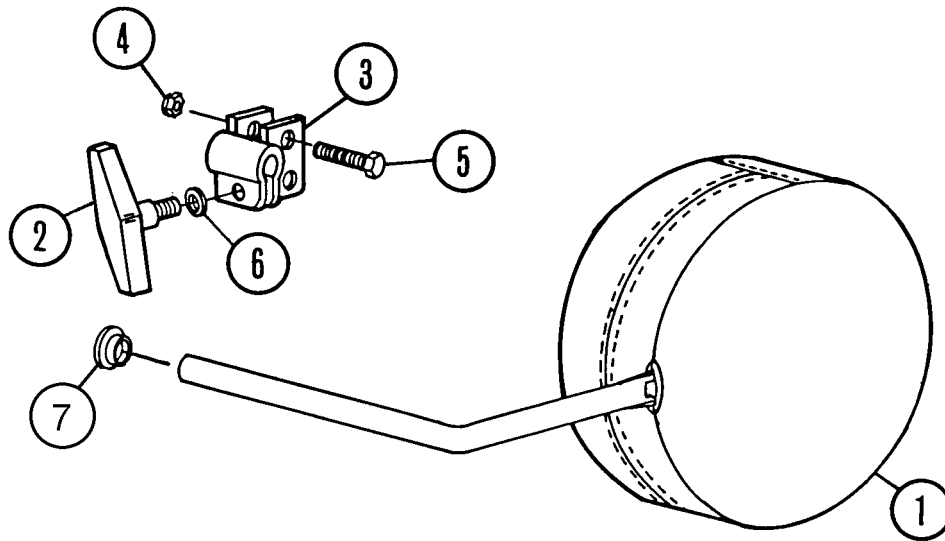
**Table 2-15. Foot Support Assembly (Posture Perfect)—P/N 2500-170**

Item Number	Part Number	Quantity	Description
1	2000-394 (500)	1	Footrest support
2	2000-318 (500)	1	Slide bracket—rh
3	2000-299 (500)	1	Slide bracket—lh
4	2000-298 (500)	1	Shock mount tube, 16"
5	2000-339 (500)†††	1	Cover
6	8000-178 (500)	1	Bolt
7	8000-105 (500)	3	Plastic plug
8	5200-104 (500)	2	Bracket
9	8000-279 (500)	2	Screw
10	8000-128 (500)	4	Nut, nyloc
11	3000-100 (500)	2	Plate, pivot
12	3000-299 (500)	1	Panel, foot support

††† Specify upholstery color.

## Shoulder Bolster Set

Figure 2-16. Shoulder Bolster Set



m124\_007

**Table 2-16. Shoulder Bolster Set (PostureRest and PostureRest Plus)—P467A**

Item Number	Part Number	Quantity	Description
1	2000-204 (500)†††	1	Shoulder bolster cushion and arm—lh
	2000-205 (500)†††	1	Shoulder bolster cushion and arm—rh
2	8000-244 (500)	2	T-knob, bolster
3	2000-192 (500)	2	Bracket mount
4	8000-128 (500)	2	Nut, nyloc
5	8000-156 (500)	2	Screw
6	8000-132 (500)	2	Washer
7	8000-287 (500)	2	Plastic plug

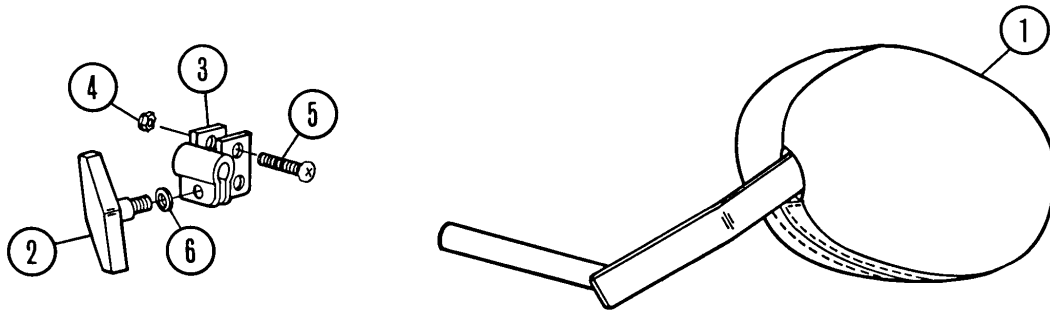
**Table 2-17. Shoulder Bolster Set (Posture Perfect)—P476A**

Item Number	Part Number	Quantity	Description
1	2000-407 (500)†††	1	Shoulder bolster cushion and arm—lh
	2000-413 (500)†††	1	Shoulder bolster cushion and arm—rh
2	8000-244 (500)	2	T-knob, bolster
3	2000-406 (500)	2	Bracket mount
4	8000-128 (500)	2	Nut, nyloc
5	8000-156 (500)	2	Screw
6	8000-132 (500)	2	Washer
7	8000-287 (500)	2	Plastic plug

††† Specify upholstery color.

## Body Bolster Set

Figure 2-17. Body Bolster Set



m124\_025

**Table 2-18. Body Bolster Set (PostureRest and PostureRest Plus)—P468A**

Item Number	Part Number	Quantity	Description
1	2000-202 (500)†††	1	Body bolster cushion and arm—rh
	2000-203 (500)†††	1	Body bolster cushion and arm—lh
2	8000-244 (500)	2	T-knob, bolster
3	2000-192 (500)	2	Bracket mount
4	8000-128 (500)	2	Nut, nyloc
5	8000-156 (500)	2	Screw
6	8000-132 (500)	2	Washer

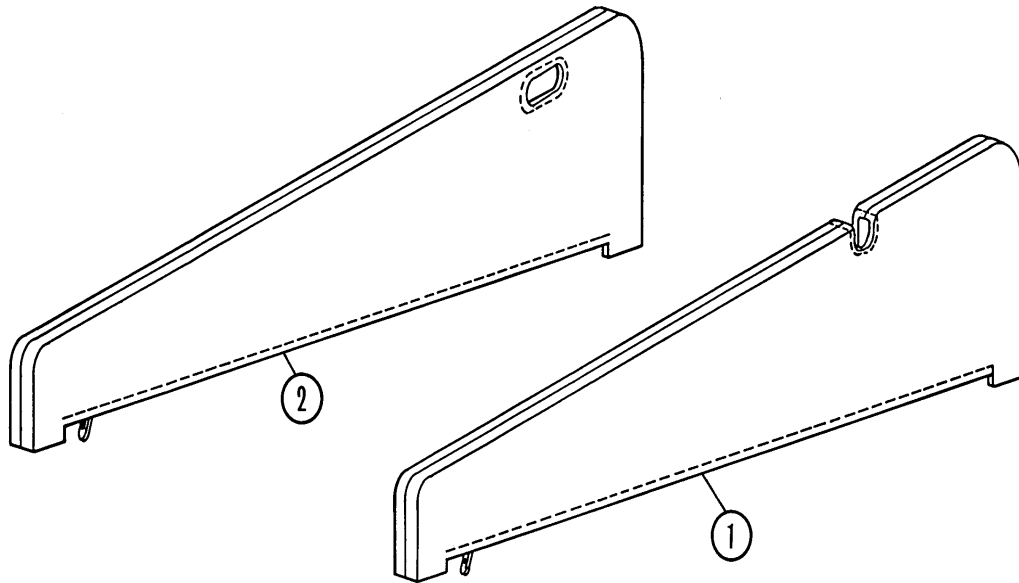
**Table 2-19. Body Bolster Set (Posture Perfect)—P477A**

Item Number	Part Number	Quantity	Description
1	2000-408 (500)†††	1	Body bolster cushion and arm—rh
	2000-412 (500)†††	1	Body bolster cushion and arm—lh
2	8000-244 (500)	2	T-knob, bolster
3	2000-406 (500)	2	Bracket mount
4	8000-128 (500)	2	Nut, nyloc
5	8000-156 (500)	2	Screw
6	8000-132 (500)	2	Washer

††† Specify upholstery color.

## Privacy Panel Cushions (PostureRest and PostureRest Plus)

Figure 2-18. Privacy Panel Cushions (PostureRest and PostureRest Plus)



m124\_013

**Table 2-20. Privacy Panel Cushions (PostureRest and PostureRest Plus)**

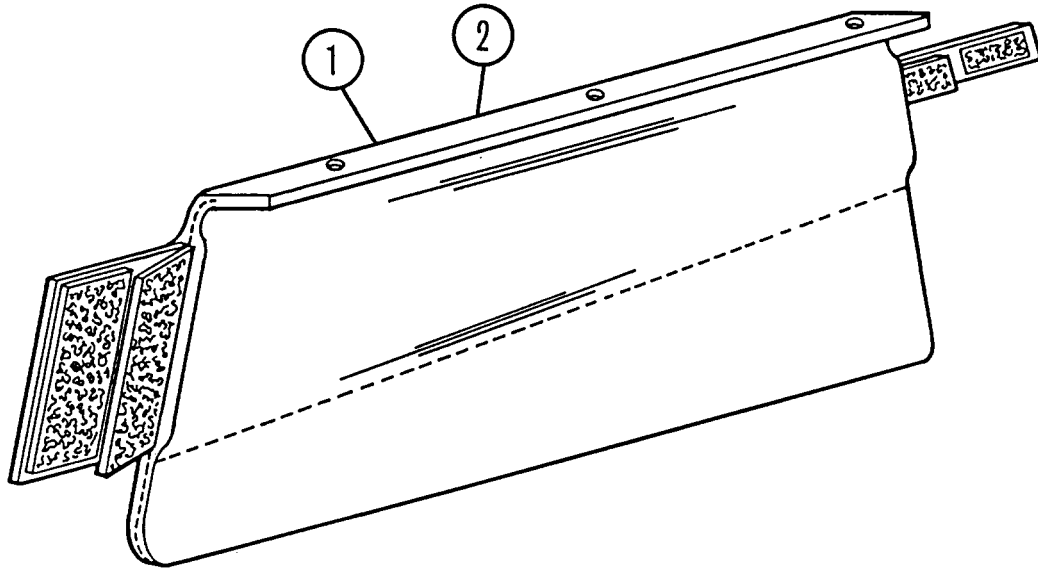
Item Number	Part Number	Quantity	Description
1	2000-349 (500)†††	1	Privacy panel—lh
2	2000-350 (500)†††	1	Privacy panel—rh

††† Specify upholstery color.



## Privacy Panel Assembly (Posture Perfect)—P/N 2500-168

Figure 2-19. Privacy Panel Assembly (Posture Perfect)—P/N 2500-168



m124\_039

**Table 2-21. Privacy Panel Assembly (Posture Perfect)—P/N 2500-168**

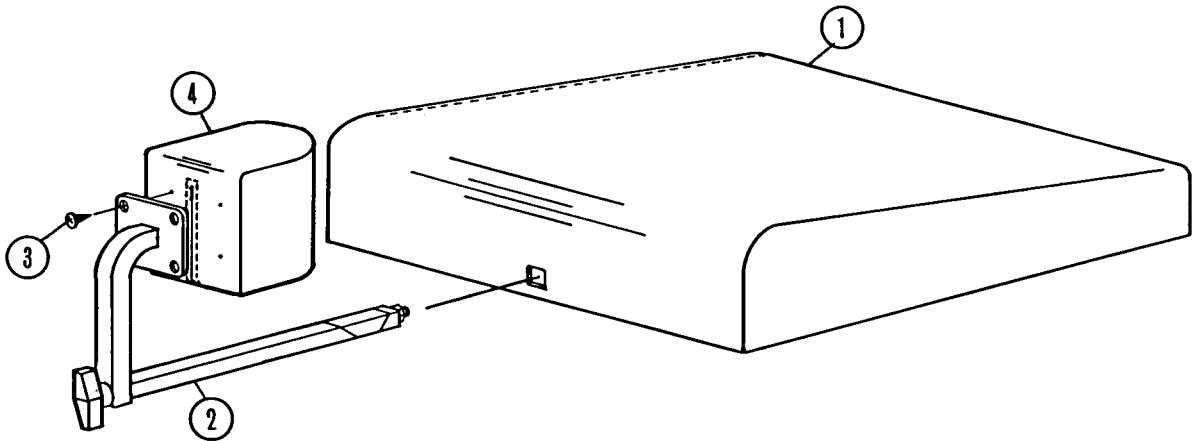
Item Number	Part Number	Quantity	Description
1	2000-336 (500)†††	1	Privacy panel—lh
2	2000-335 (500)†††	1	Privacy panel—rh

††† Specify upholstery color.

**2**

## Pommel Seat Cushion (PostureRest)

Figure 2-20. Pommel Seal Cushion (PostureRest)



m124\_016

**Table 2-22. Pommel Seal Cushion (PostureRest)**

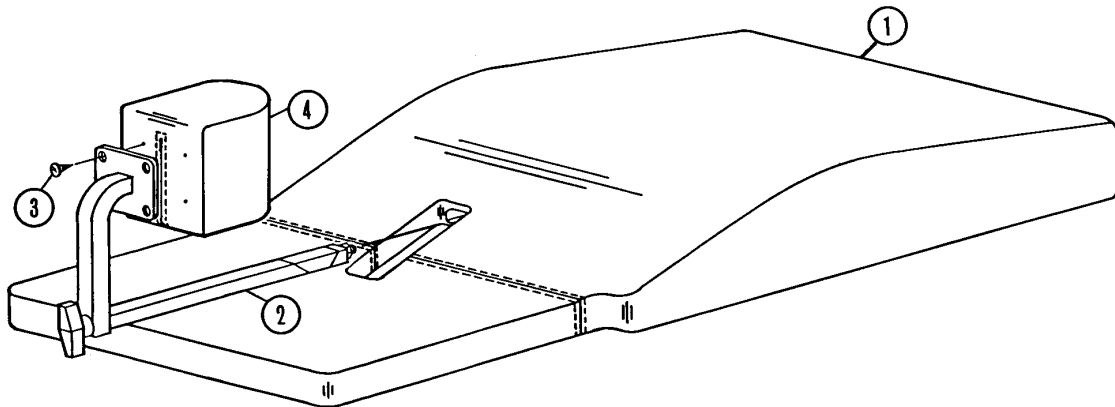
Item Number	Part Number	Quantity	Description
1	2000-236 (500)†††	1	Seat cushion assembly
2	4000-126 (500)	1	Bracket, pommel
3	8000-104 (500)	4	Screw
4	2000-237 (500)†††	1	Cushion assembly, pommel

††† Specify upholstery color.

**2**

## Pommel Seat Cushion (Posture Perfect and PostureRest Plus)

Figure 2-21. Pommel Seal Cushion (Posture Perfect and PostureRest Plus))



m124\_017

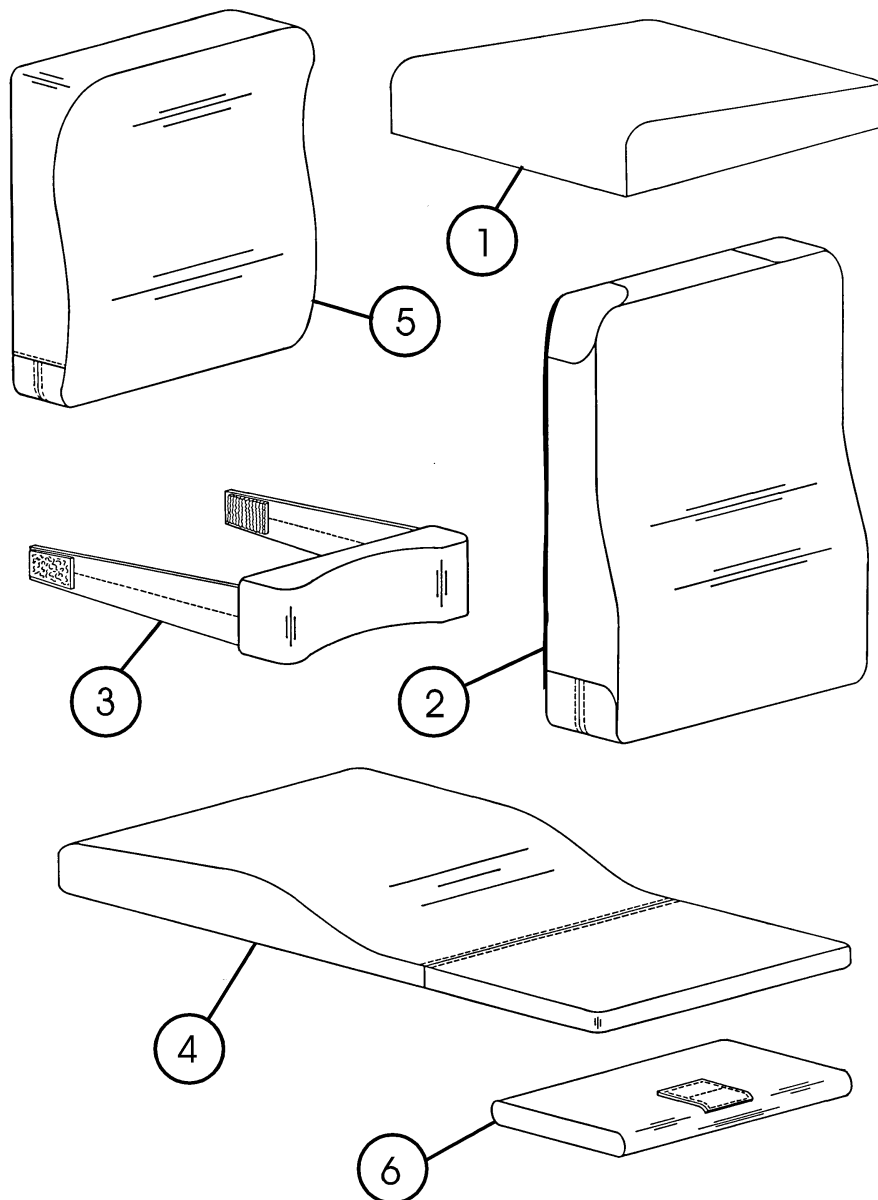
**Table 2-23. Pommel Seal Cushion (Posture Perfect and PostureRest Plus))**

Item Number	Part Number	Quantity	Description
1	2000-364 (500)†††	1	Seat cushion assembly (Posture Perfect)
	2000-353 (500)†††	1	Seat cushion assembly (PostureRest Plus)
2	4000-126 (500)	1	Bracket, pommel
3	8000-104 (500)	4	Screw
4	2000-237 (500)†††	1	Cushion assembly, pommel

††† Specify upholstery color.

## Cushion

Figure 2-22. Cushion



m124\_020

**Table 2-24. Cushion**

Item Number	Part Number	Quantity	Description
1	2000-354 (500)†††	1	Cushion, seat (PostureRest)
2	2000-345 (500)†††	1	Cushion, high back (PostureRest and PostureRest Plus)
	2000-306 (500)†††	1	Cushion, high back (Posture Perfect)
3	2000-307 (500)†††	1	Cushion, headrest, winged (PostureRest, PostureRest Plus and Posture Perfect)
4	2000-347 (500)†††	1	Cushion, chase legrest (PostureRest)
	2000-287 (500)†††	1	Cushion, chase legrest (Posture Perfect)
5	2000-346 (500)†††	1	Cushion, standard back (PostureRest)
	2000-308 (500)†††	1	Cushion, standard back (Posture Perfect)
6	2000-348 (500)†††	1	Cushion, sub cushion (PostureRest)
	2000-305 (500)†††	1	Cushion, sub cushion (Posture Perfect)

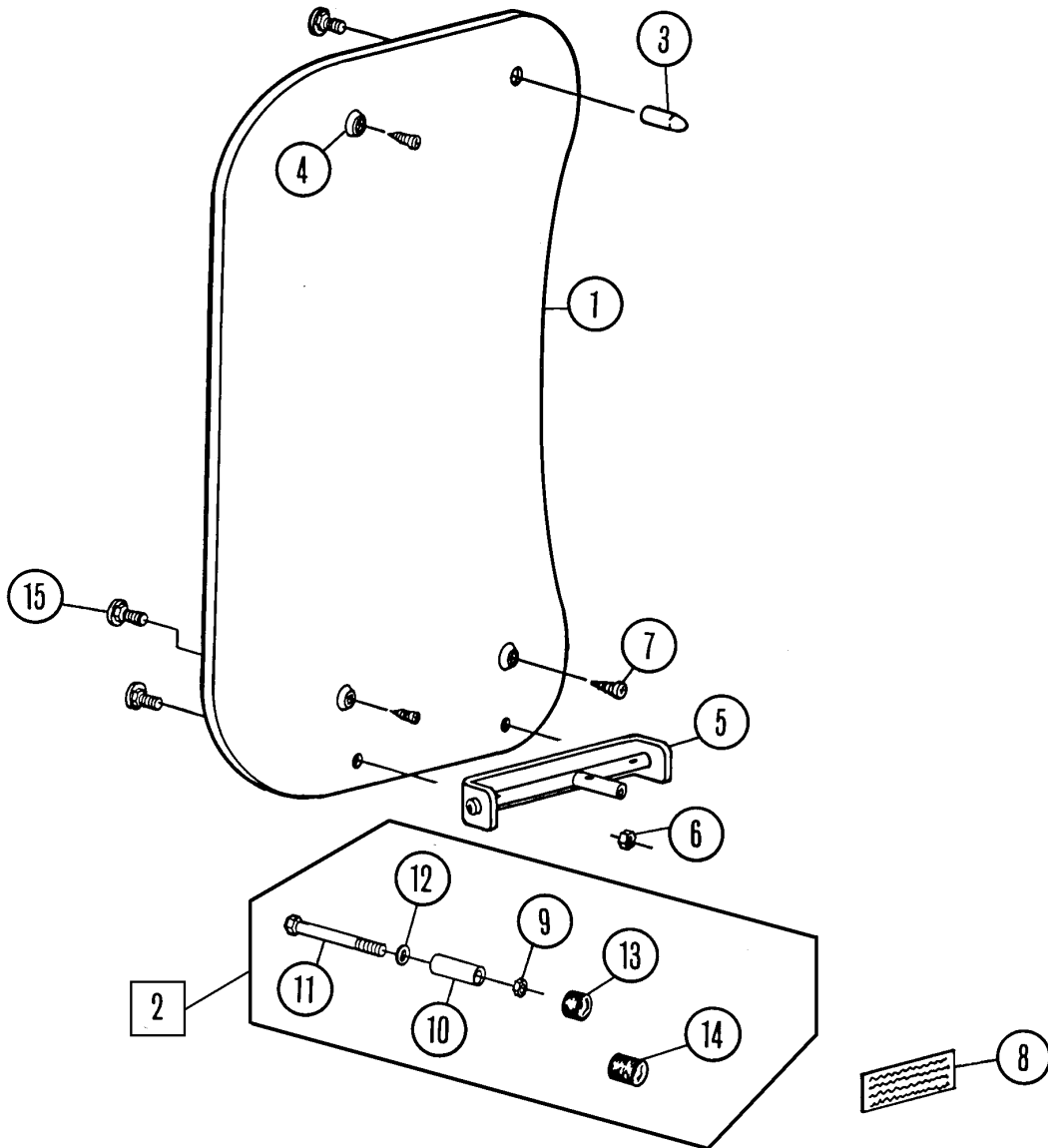
††† Specify upholstery color.



## Tray Assembly (PostureRest Plus and PostureRest)

Figure 2-23. Tray Assembly (PostureRest Plus and PostureRest)

2



m124\_022

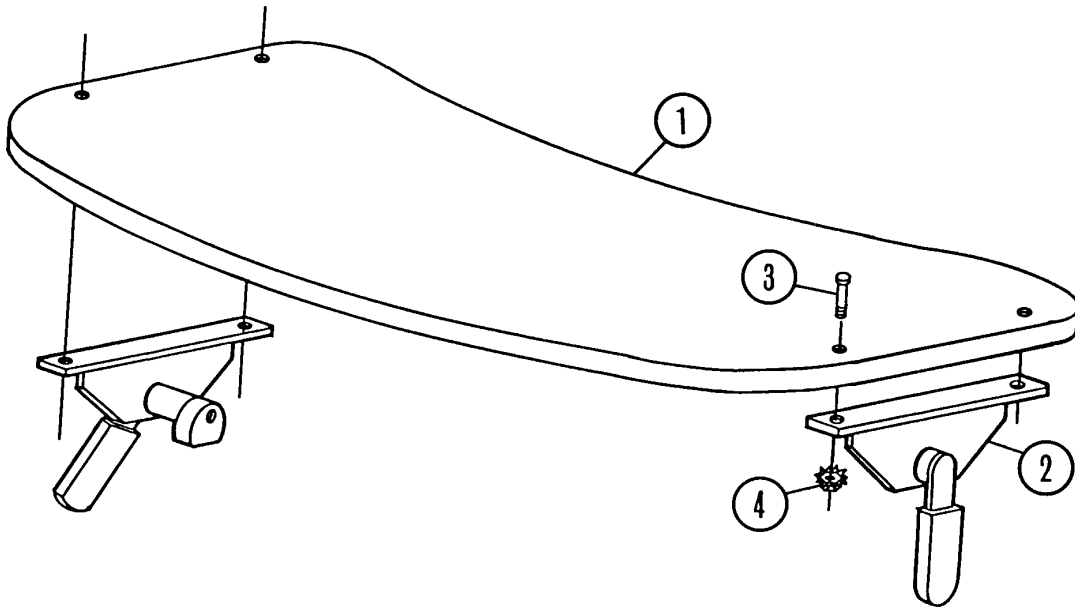
**Table 2-25. Tray Assembly (PostureRest Plus and PostureRest)**

Item Number	Part Number	Quantity	Description
1	2500-176 (500)	1	19" tray
2	2500-159 (500)	1	Tray stop assembly
3	3000-171 (500)	1	Pin
4	3000-121 (500)	1	Rubber bumper
5	2000-114 (500)	1	Hinge
6	8000-303 (500)	1	Nut
7	8000-307 (500)	3	Screw
8	8000-241 (500)	1	Decal, warning
9	8000-238 (500)	1	Nut
10	5000-162 (500)	1	Spacer
11	8000-258 (500)	1	Bolt
12	8000-133 (500)	1	Washer
13	3000-122 (500)	1	Rubber cap
14	3000-181 (500)	1	Tray stop
15	8000-300 (500)	3	Bolt

## Tray Assembly (Posture Perfect)—P/N 2500-167

Figure 2-24. Tray Assembly (Posture Perfect)—P/N 2500-167

2



m124\_034

**Table 2-26. Tray Assembly (Posture Perfect)—P/N 2500-167**

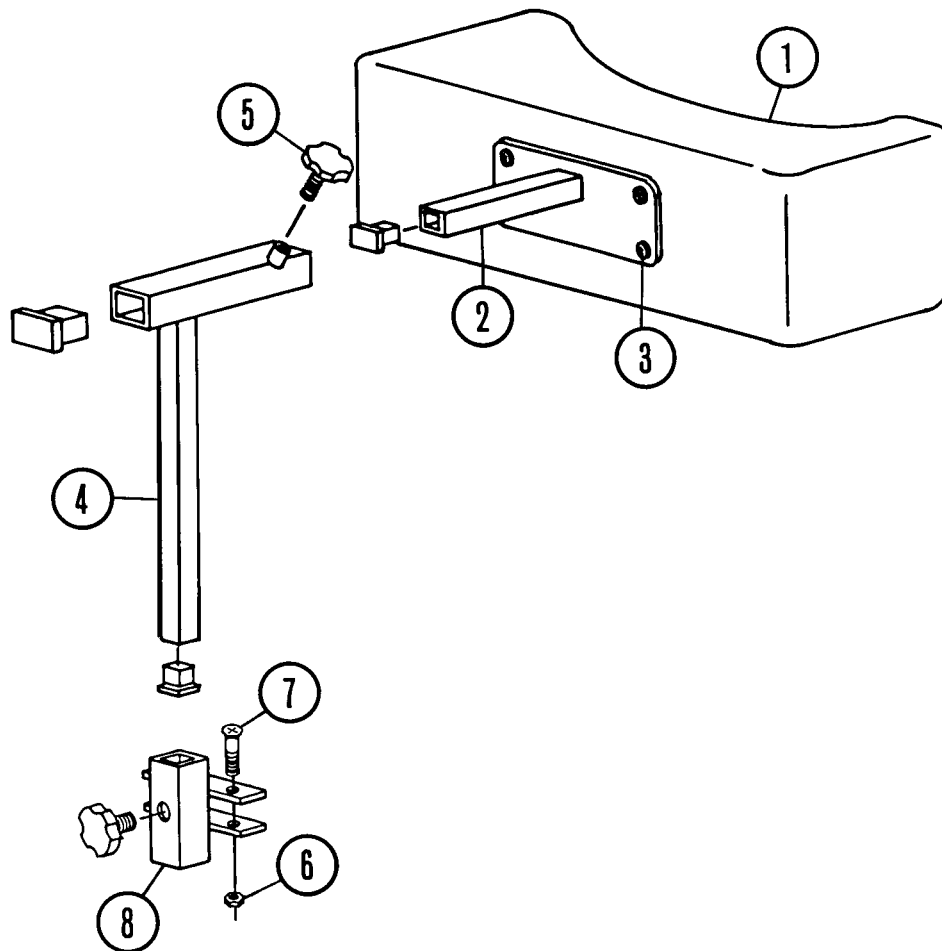
<b>Item Number</b>	<b>Part Number</b>	<b>Quantity</b>	<b>Description</b>
1	3000-240 (500)	1	Tray
2	2500-183 (500)	2	Hinge assembly
3	8000-300 (500)	4	Bolt
4	8000-303 (500)	4	Nut

**2**

## Contoured Headrest Assembly

Figure 2-25. Contoured Headrest Assembly

2



m124\_024

**Table 2-27. Contoured Headrest Assembly (PostureRest and PostureRest Plus)  
—P/N 2500-103**

Item Number	Part Number	Quantity	Description
1	2000-105 (500)†††	1	Cushion contoured, headrest
2	2000-112 (500)	1	Horizontal tube with plate
3	8000-106 (500)	4	Screw
4	2000-113 (500)	1	Vertical tube
5	8000-246 (500)	1	Sure lock knob
6	8000-128 (500)	2	Nut, nyloc
7	8000-235 (500)	2	Bolt
8	2000-167 (500)	1	Headrest mounting bracket

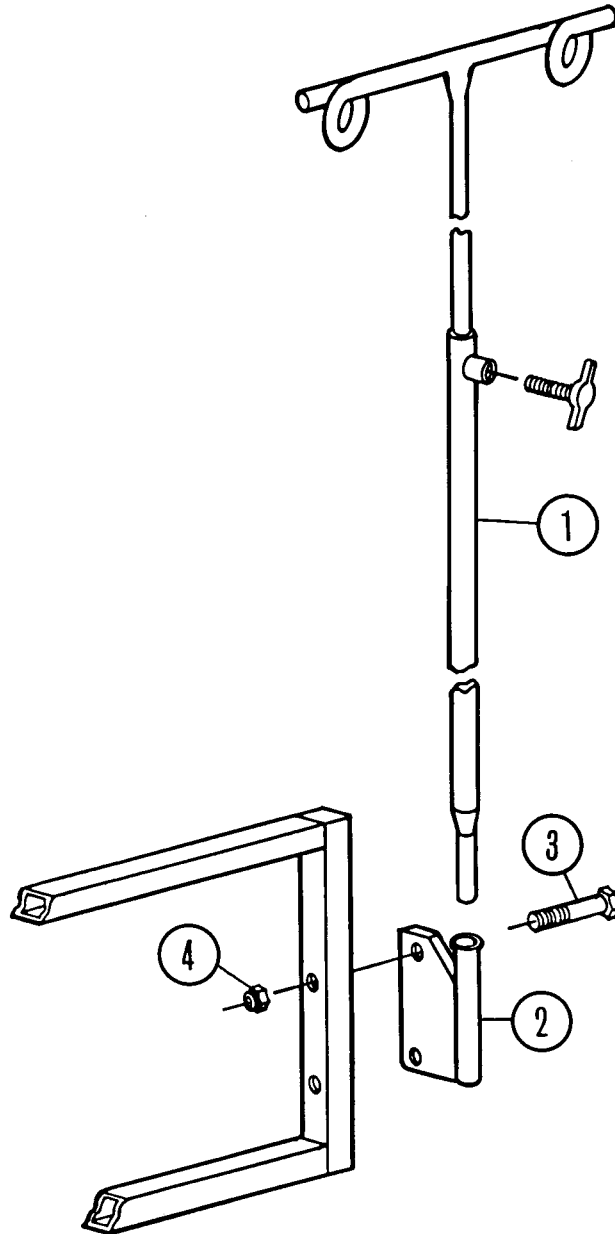
**Table 2-28. Contoured Headrest Assembly (Posture Perfect)—P/N 2500-173**

Item Number	Part Number	Quantity	Description
1	2000-105 (500)†††	1	Cushion contoured, headrest
2	2000-410 (500)	1	Horizontal tube with plate
3	8000-106 (500)	4	Screw
4	2000-409 (500)	1	Vertical tube
5	8000-125 (500)	1	Sure lock knob
6	8000-128 (500)	2	Nut, nyloc
7	8000-156 (500)	2	Screw
8	2000-411 (500)	1	Headrest mounting bracket

††† Specify upholstery color.

## IV Holder—P/N 2500-125

Figure 2-26. IV Holder—P/N 2500-125



m124\_028

**Table 2-29. IV Holder—P/N 2500-125**

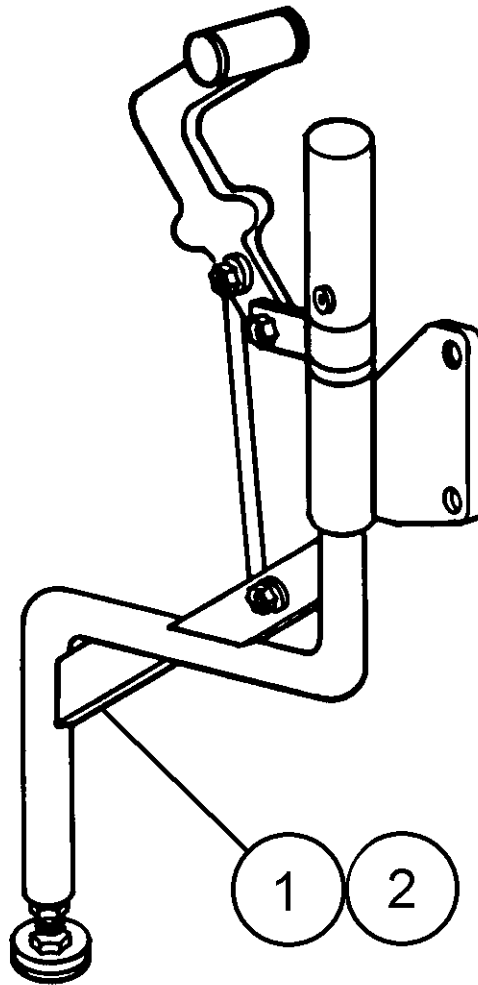
<b>Item Number</b>	<b>Part Number</b>	<b>Quantity</b>	<b>Description</b>
1	3000-193 (500)	1	IV pole
2	2000-238 (500)	1	IV bracket holder
3	8000-156 (500)	2	Screw
4	8000-128 (500)	2	Nut, nyloc

**2**



## Rear Stabilizer

Figure 2-27. Rear Stabilizer



m124\_015

**Table 2-30. Rear Stabilizer**

Item Number	Part Number	Quantity	Description
1	2000-404 (500)	1	Rear stabilizer—rh (PostureRest and PostureRest Plus)
2	2000-405 (500)	1	Rear stabilizer—lh (PostureRest and Posture-Rest Plus)

2

**NOTES:**

---

**2**